

Cross River Rail

Project

Monthly Environmental Report

April 2026

Table of contents

EXECUTIVE SUMMARY	3
NON-COMPLIANCE EVENTS	8
DEFINITIONS.....	9
1. INTRODUCTION	10
1.1. BACKGROUND.....	10
1.2. PROJECT DELIVERY.....	10
1.3. REPORTING FRAMEWORK	12
1.4. MONTHLY ENVIRONMENT REPORT ENDORSEMENT	12
2. COMPLIANCE REVIEW	12
2.1. RELEVANT PROJECT WORKS	12
2.2. KEY ENVIRONMENTAL ELEMENTS	14
2.2.1. Noise.....	14
2.2.2. Vibration	16
2.2.3. Air Quality.....	16
2.2.4. Water Quality	18
2.2.5. Erosion and Sediment Control.....	20
2.3. COMPLAINTS MANAGEMENT	20
2.4. NEW UPCOMING PROJECT WORKS	22
2.5. NON-COMPLIANCE EVENTS.....	24
APPENDIX A RIS MONTHLY REPORT	25
APPENDIX B TSD MONTHLY REPORT	26

This document is the property of the Cross River Rail Delivery Authority. It may not be copied or reproduced without permission.



Executive Summary

This Monthly Environmental Report (MER) has been produced for Project Works undertaken on site for April 2026 for the Rail, Integration and Systems (RIS), and Tunnel, Stations and Development (TSD) packages. The report addresses the obligations outlined in the Coordinator-General's change report – Coordinator-General's change report – no. 15 (March 2025) and the individual contractor's Construction Environmental Management Plans (CEMPs), which have been developed generally in accordance with the Project's Outline Environmental Management Plan (OEMP). The Cross River Rail Delivery Authority (Delivery Authority), as the Proponent of the Cross River Rail Project, is required to submit a monthly report to the Coordinator-General to demonstrate compliance with the imposed conditions.

Section 1 of this report provides a background to the project and the Coordinator-General's conditions. Section 2 provides a review of the contractor's reports contained in Appendix A (RIS Monthly Report) and Appendix B (TSD Monthly Report).

The Environmental Monitor (EM) has reviewed and endorsed this MER. This endorsement follows ongoing and new document reviews, and surveillance across the relevant project worksites.

The CEMPs prepared by both Unity Alliance (RIS Contractor) and CBGU JV on behalf of Pulse (TSD Contractor) for their Relevant Project Works were endorsed by the EM and submitted to the Coordinator-General in accordance with Condition 4(a) and 4(b) respectively.

The table below presents a summary of compliance status against each condition with a short comment for each:

Imposed Condition	Requirement Summary	Compliance Met (Yes/No/NA)	Comment
1.	General conditions – compliance with the Project Changes relevant to the contractor's scope	Yes	The CEMP and site management plans are in accordance with the Project Changes.
2.	Outline Environmental Management Plan – timely submission to the Coordinator-General including required sub-plans	Yes	OEMP dated June 2020 is effective for the reporting period.

Imposed Condition	Requirement Summary	Compliance Met (Yes/No/NA)	Comment
3.	Design – achievement of the Environmental Design Requirements	NA	Ongoing progress with design packages.
4.	Construction Environmental Management Plan – all relating to Relevant Project Works.	Yes	RIS – CEMP Revision 13 covering full scope of RIS works is effective from 14 March 2022. TSD – CEMP Revision 12 covering full scope of TSD works is effective from 6 June 2024.
5.	Compliance and Incident management – Non-compliance events, notifications and reporting.	Yes	No Non-Compliance Event (NCE) was reported in April 2026.
6.	Reporting – Monthly and Annual reporting.	Yes	This MER, including RIS and TSD Monthly Reports, has been submitted in accordance with the conditioned requirements. Refer to Appendix A and Appendix B .
7.	Environmental Monitor (EM) – engaged and functions resumed.	Yes	Ongoing weekly site inspections and document reviews continue to take place.
8.	Community Relations Monitor (CRM) – engaged and functions resumed.	Yes	Ongoing.
9.	Community Engagement Plan – developed and endorsed by Environmental Monitor.	Yes	CEMPs endorsed with Community Engagement Plan.
10.	Hours of work – Project Works undertaken during approved hours.	Yes	Project Works have been undertaken in accordance with project requirements. This has been achieved through Standard Working Hours, Extended work hours and Managed Work.
11.	Noise – Project Works must aim to achieve internal noise goals for human health and well-being.	Yes	Noise monitoring met project noise requirements at Sensitive Places. RIS – Noise monitoring was undertaken to monitor construction impacts at sensitive places. Noise monitoring confirmed project requirements were met. Refer to Appendix A (Section 2.1 and Table 1).

This document is the property of the Cross River Rail Delivery Authority. It may not be copied or reproduced without permission.

Imposed Condition	Requirement Summary	Compliance Met (Yes/No/NA)	Comment
			TSD – Noise monitoring was undertaken to monitor construction impacts at sensitive places and for model verification. Noise monitoring confirmed project requirements were met. Refer to Appendix B (Section 3.2 and Table 3).
	Vibration – Project Works must aim to achieve vibration goals for cosmetic damage, human comfort and sensitive building contents.	Yes	RIS – Vibration monitoring occurred at Mayne Yard. The contractor confirmed the monitoring results met project requirements. See Appendix A (Section 2.2 and Table 2). TSD – Vibration monitoring occurred at Roma Street and Albert Street. The contractor confirmed the monitoring results met project requirements. See Appendix B (Section 3.1 and Table 2).
12.	Property damage – relating to ground movement.	Yes	RIS – Vibration modelling has been undertaken for Relevant Project Works, and Property Damage Sub-plans have been developed and implemented. Pre-condition surveys have been completed at heritage, commercial and residential buildings at RNA, Northern Corridor and Dutton Park to Salisbury stations. TSD – Vibration modelling has been prepared and is ongoing. Where required, building condition survey reports are completed for heritage and residential buildings.
13.	Air quality – Works must aim to achieve air quality goals for human health and nuisance.	Yes	Air quality monitoring met Project air quality requirements. RIS – In April 2026, exceedance recorded at Mayne Yard North for dust deposition. The Contractor confirmed they continued to meet the requirements under Condition 13 and the OEMP. Refer to Section 2.2.3 below and Appendix A (Section 2.3.1, Table 3 and plus Figure 1). TSD – The contractor confirmed they continued to meet the requirements under Condition 13 and the OEMP. Refer to Appendix B (Section 3.3.2 and Table 5).

This document is the property of the Cross River Rail Delivery Authority. It may not be copied or reproduced without permission.

Imposed Condition	Requirement Summary	Compliance Met (Yes/No/NA)	Comment
14.	Traffic and transport – Works must minimise adverse impacts on road safety and traffic flow.	Yes	Traffic Management Plans are covered in the CEMPs. Sub-plans for all active worksites have been reviewed and endorsed by the EM.
15.	<p>Water quality – Works must not discharge groundwater from the construction site above the relevant environmental values and water quality objectives.</p> <p>Monitor and report on water quality in accordance with CEMP and Sub-plans.</p>	Yes	<p>Monitoring and reporting on groundwater and surface water quality was undertaken in accordance with RIS and TSD Water Quality Management Plans.</p> <p>RIS – No groundwater discharges occurred during April 2026.</p> <p>Post-rainfall monitoring was not triggered during April 2026.</p> <p>TSD – No groundwater discharges occurred during April 2026.</p> <p>Surface water discharges occurred at Roma Street. The monitoring results demonstrated surface water discharges met project water quality discharge criteria. Refer to Appendix B (Section 3.4.2 and Table 7) for surface water monitoring results.</p> <p>Post-rainfall monitoring was not triggered during April 2026.</p> <p>Routine surface water monitoring occurred across TSD project sites. The TSD contractor confirmed the project outcomes were met. Refer to Appendix B (Section 3.5 and Table 8) for further details.</p>
16.	Water resources – Evaluate potential impact, plan works, implement controls and monitor inflow of groundwater associated with drawdown.	Yes	<p>RIS – There is no sustained groundwater extraction involved in the RIS scope of works so predictive modelling of groundwater drawdown is not required. Collection of hydrological data to model potential inflow rates into excavations during construction has been undertaken.</p> <p>TSD – Inflow of groundwater into the worksites is being continuously monitored to validate the predictive modelling.</p>

This document is the property of the Cross River Rail Delivery Authority. It may not be copied or reproduced without permission.

Imposed Condition	Requirement Summary	Compliance Met (Yes/No/NA)	Comment
17.	Surface water – Must be designed to avoid inundation from stormwater due to a 2-year (6hr) ARI rainfall event and flood waters due to a 5-year ARI rainfall event and constructed to avoid afflux or cause the redirection of uncontrolled surface water flows, including stormwater flows, outside of worksites.	Yes	Contractors continue to consider this condition in their site planning and design.
18.	Erosion and sediment control – Provisions for erosion and sediment control must be consistent with the Guidelines for Best Practice Erosion and Sediment Control (International Erosion Control Association, 2008) and the Department of Transport and Main Roads' Technical Standard MRTS52.	Yes	Site specific ESC plans for all active work sites have been reviewed by the EM and implemented on site.
19.	Acid sulfate soils – managed as per the Queensland Acid Sulfate Soil Technical Manual.	Yes	Acid Sulfate Soil Management Plans have been prepared and implemented for all active worksites.
20.	Landscape and open space – general requirement to minimise impacts on landscapes and open space values and specific requirements around Victoria Park.	Yes	The construction of a temporary access road through Victoria Park was undertaken under a Heritage Exemption Certificate approved by the Department of the Environment, Tourism, Science and Innovation (DETSI) on 24 July 2021. Consideration has been taken to minimise loss of trees and park area impacted during these temporary works. Replanting works completed and the area returned to BCC.
21.	Worksite rehabilitation – worksites rehabilitated as soon as practicable upon completion of works or commissioning, and in consultation with Brisbane City Council.	Yes	Worksites for Exhibition, Fairfield, Yeronga, Yeerongpilly and Rocklea stations have been rehabilitated upon completion of the works in consultation with BCC and QR, as appropriate. Worksite rehabilitation has satisfied erosion and sediment control, dust nuisance, landscaping and visual impact requirements.

This document is the property of the Cross River Rail Delivery Authority. It may not be copied or reproduced without permission.

Non-Compliance Events

There were no NCEs recorded in April 2026.

This document is the property of the Cross River Rail Delivery Authority. It may not be copied or reproduced without permission.



Definitions

Acronym	Definition
ARI	Average Recurrence Interval – The average or expected value of the periods between exceedances of a given rainfall total accumulated over a given duration.
CEMP	Construction Environmental Management Plan
CGCR	Coordinator-General's Change Report
CRM	The Community Relations Monitor engaged in accordance with Imposed Condition 8
Contractor	The contractors appointed to design, construct, and commission the Project
Coordinator-General	The corporation sole preserved, continued, and constituted under section 8 of the SDPWO Act.
CRR	Cross River Rail
DAP	Directly Affected Persons
DETSI	Department of Environment, Tourism, Science and Innovation
EIS	Environmental Impact Statement
EM	The Environmental Monitor engaged in accordance with Imposed Condition 7
ESC	Erosion and sediment control
IECA	International Erosion Control Association
Imposed condition/s	A condition/s imposed by the Coordinator-General under section 54B of the SDPWO Act for the Project
MER	Monthly Environment Report
MRTS52	Transport and Main Roads Specifications MRTS52 Erosion and Sediment Control
NCE	Non-Compliance Event
OEMP	Outline Environmental Management Plan
OTV	On-track Vehicle
Project	The Cross River Rail Project
Project Works	As defined in the Imposed Conditions
Proponent	The Cross River Rail Delivery Authority
RfPC	Request for Project Change
RIS	Rail, Integration and Systems
SDPWO Act	<i>State Development and Public Works Organisation Act 1971</i>
Sub-plan	Any sub-plan of the CEMP
The Delivery Authority	The Cross River Rail Delivery Authority
TSD	Tunnel, Stations and Development

This document is the property of the Cross River Rail Delivery Authority. It may not be copied or reproduced without permission.

1. Introduction

1.1. Background

The Cross River Rail Project (the Project) is a declared coordinated project under the *State Development and Public Works Organisation Act 1971* (SDPWO Act). The CRR Environmental Impact Statement (EIS) was evaluated by the Coordinator-General who recommended the Project proceed, subject to Imposed Conditions and recommendations. Since the evaluation of the EIS, several Requests for Project Change (RfPC) submissions have been evaluated by the Coordinator-General. RfPC 15 was endorsed on 07 March 2025 by the Coordinator-General.

The Coordinator-General has imposed conditions on the Project that apply throughout the design, construction, and commissioning phases. These are referred to as the Imposed Conditions. In addition, the Coordinator-General has approved the Project's OEMP which outlines the environmental management framework for the Project. The OEMP includes environmental outcomes and performance criteria which must be achieved for the Project.

Imposed Conditions 5 and 6 nominate the compliance and reporting requirements for the Project. This monthly report addresses these requirements.

1.2. Project Delivery

The Delivery Authority is responsible for planning and delivering the Project. The Project established environmental management plans and secured some of the secondary environmental approvals in addition to enabling works.

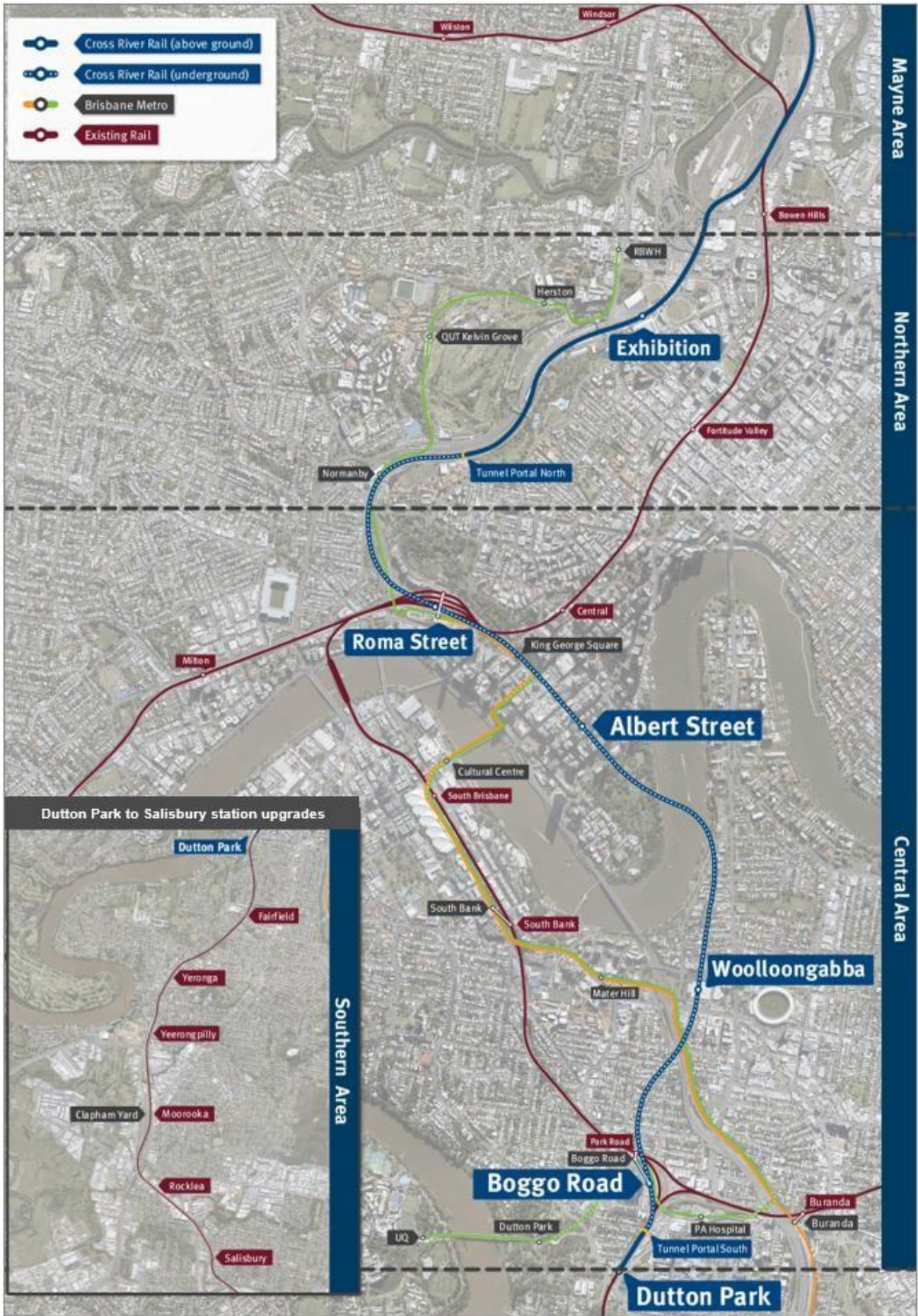
The two main delivery packages which require reporting under the Coordinator-General's imposed conditions are:

- Tunnel, Stations and Development (TSD) being delivered by CBGU JV; and
- Rail, Integration and Systems (RIS) being delivered by Unity Alliance.

The Project is geographically divided into four areas:

- Mayne Area;
- Northern Area;
- Central Area; and
- Southern Area.

These areas and delivery packages are shown in the figure below.



This document is the property of the Cross River Rail Delivery Authority. It may not be copied or reproduced without permission.

1.3. Reporting Framework

This MER has been prepared to comply with Imposed Conditions 6 and 7 of the Coordinator-General Change Report (CGCR) and includes:

- monitoring data and associated interpretation of the results required by the imposed conditions and Construction Environmental Management Plan (CEMP);
- details of any NCEs, including incidents, corrective actions, and preventative actions; and
- details of any complaints, including description, responses, and corrective actions.

Reporting on environmental elements captured in each monthly environmental report, including the annual environmental report, is reviewed and endorsed by the EM.

1.4. Monthly Environment Report Endorsement

This MER has been endorsed by the EM and the endorsement provided to the Coordinator-General.

2. Compliance Review

This MER has been reviewed and endorsed by the EM as per Imposed Condition 7 of the CGCR.

2.1. Relevant Project Works

The following Project Works were undertaken in April 2026:

Area	Project Works
Mayne Area	Mayne Yard North – <ul style="list-style-type: none">• Practical Completion (PC) Part 2 submitted. Mayne Yard East – <ul style="list-style-type: none">• Signalling and OHLE foundations ongoing;• Low voltage (LV), comms cabling terminations and testing ongoing;• Crew building carpark construction continued and landscaping commenced;• Rail bridge works across Breakfast Creek ongoing and culvert maintenance nearing completion with rock pitching completed; and• Rail track construction, ballast placement, sleeper and rail construction;
Northern Area	Northern Corridor – <ul style="list-style-type: none">• Northern Portal Enhanced Radio System (ERS) remains waiting handover from TSD to complete testing and commissioning (T&C);• Fibre terminations and testing ongoing; and• Further progress on interconnector.

Area	Project Works
Central Area	<p>Roma Street –</p> <ul style="list-style-type: none"> • Urban Realm – ongoing footpath construction, traffic light installation and landscaping in Pocket Park; • Plaza landscaping works ongoing and suspended slab FRP nearing completion; • Acoustic shed removal continued; • Platform 1 and 2 nearing completion; and • Ongoing screeding and tiling, floor finishes, painting and fitout in back of house (BoH) and front of house (FoH) rooms. <p>Albert Street –</p> <ul style="list-style-type: none"> • Lot 1 – Mechanical and electrical (M&E) fitout ongoing throughout, cladding and architectural façade louvre installation ongoing and canopy skylight completed; • Lot 2 – Concrete slab removal, terrazzo tiling and skirting nearing completion, comms and controls fitout on platform level and defect walkthrough continued; • Lot 3 – Flood barrier door installation continues along with station canopy and building fitout; and • Green Spine – Services and utility works, line marking, gantry and facilities adjustments, and removing and installing street furniture. <p>Woolloongabba –</p> <ul style="list-style-type: none"> • East-West Road works completed and ticket office fitout continues; • Station fitout works with cladding, soffits, tiling and vertical transport ongoing; • Water feature nearing completion and escalator fitout continues; and • Services works and landscaping installation ongoing. <p>Boggo Road –</p> <ul style="list-style-type: none"> • Platform Screen Door testing level 1 and 2 completed; • Urban realm works continued including tower crane base removal; • TVS installed and tested; • Retaining wall works completed and terazzo tiling nearing completion; • BoH M&E fitout and escalator fitout ongoing; and • Canopy works continues in stages. <p>Southern Portal –</p> <ul style="list-style-type: none"> • Yamma Bridge – handrail polishing and screen installation for the loop ongoing with lift shaft fitout on the eastern side; • Precinct utility works at Railway Terrace and Kent Street; and • Works on additional sediment basins continues.
Southern Area	<p>Southern to Salisbury Rail Corridor –</p> <ul style="list-style-type: none"> • Progressed with general corridor completion works such as corridor drainage, OHLE, signalling, track and civil works. <p>Dutton Park –</p> <ul style="list-style-type: none"> • Reinstatement of the Kent Street TRI laydown area nearing completion; • Works along Ensign Avenue and Fenton Street; and

This document is the property of the Cross River Rail Delivery Authority. It may not be copied or reproduced without permission.

Area	Project Works
	<ul style="list-style-type: none"> • Achieve PC for all assets related to Dutton Park. <p>Moorooka station –</p> <ul style="list-style-type: none"> • Platform 1 and 2 pile cap installation, hydraulics and services works; • Platform 3 backfill works completed, steel fixing, concreting, structural steel installation and canopy works underway; • Asphalt removal and bulk earthworks completed for Platform 1 and 3; and • RMAR construction and precinct works underway. <p>Clapham Yard –</p> <ul style="list-style-type: none"> • Rail Operating System (ROS), signalling and OHLE foundations ongoing; • Rail Traffic Crew Building (RTCB) roofing, ramps and walkway works continued; • Crew Maintenance Facility (CMF) building in-ground services progressed, roof and cladding continued including solar installation; • Viaduct (BR91) substructure FRP and retaining walls including pier installation continues; • Signalling hut offsite fitout continues; and • Roads 1-5 track construction completed and road 6-12 works commenced. <p>Salisbury –</p> <ul style="list-style-type: none"> • Station reopened to the public on 2 March 2026.

2.2. Key Environmental Elements

2.2.1. Noise

The Coordinator-General’s conditions establish a framework for managing the impacts of noise. The Imposed Conditions do not establish noise limits. Compliance with the Imposed Conditions noise requirements involve demonstrating the implementation of the endorsed CEMP and associated Noise and Vibration Management Plan. This establishes the management measures to be applied which aims to achieve the identified noise goals as far as reasonably practicable. The CEMP also includes requirements for the provision of the required community notifications of upcoming work, potential impacts, and how the project team can be contacted in relation to any potential impacts.

For Project Works where potential noise impacts are modelled to be above the noise goal but below the noise goal plus 20dBA, this work is authorised where the endorsed CEMP and associated Noise and Vibration Management Plan is being implemented, including communicating construction activities to potential and actual Directly Affected Persons (DAPs). For Project Works where potential noise impacts are predicted to be more than 20dBA above the relevant noise goal, specific engagement is required with DAPs for these works.

Where internal monitoring was not possible, contractors have undertaken external monitoring at

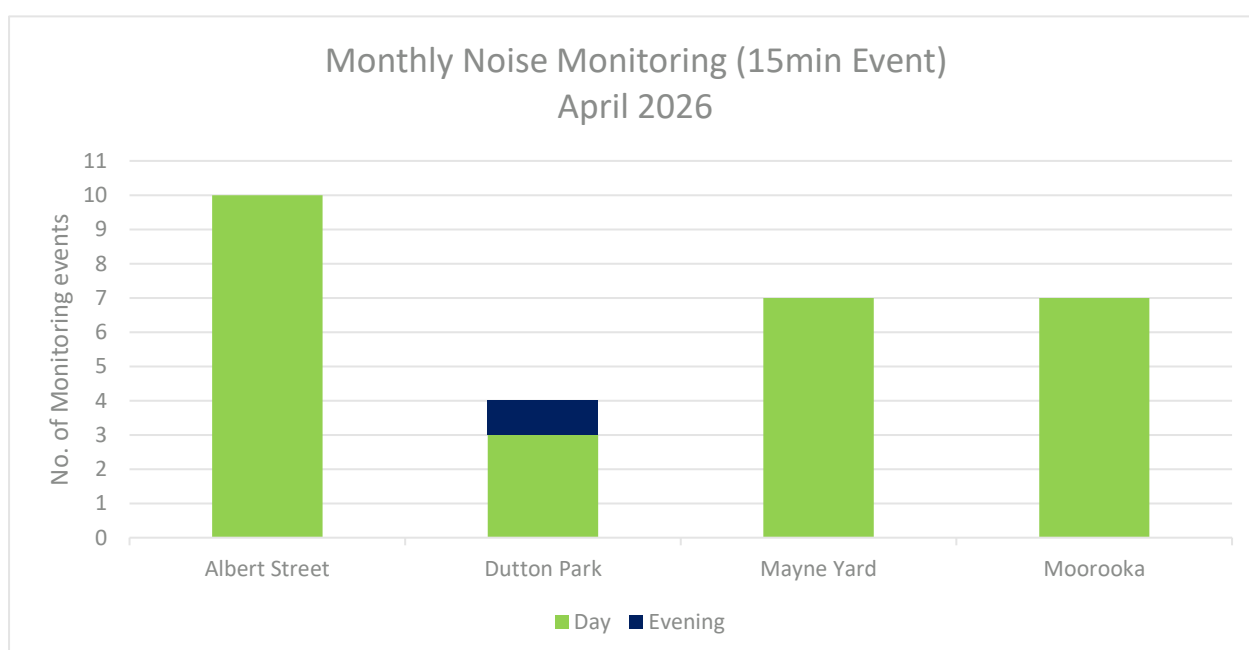
nominated locations. To assess external monitoring and determine compliance with the project's noise requirements, the project applies recommended façade attenuation corrections, which considers receiver property type.

In the Mayne Area, noise monitoring was undertaken to monitor construction impacts at sensitive places for civil, track, SCAS and OHLE works at Mayne Yard. The RIS contractor reported that the project noise requirements have been met during this reporting month. Monitoring results for the Mayne Area are detailed in **Appendix A** (Section 2.1 and Table 1).

In the Central Area, noise monitoring was undertaken for model verification and to monitor construction impacts at sensitive places for Lot 2 demolition works at Albert Street. The TSD contractor reported that the project noise requirements have been met during this reporting month. Monitoring results for the Central Area are detailed in **Appendix B** (Section 3.2 and Table 3).

In the Southern Area, noise monitoring was undertaken to monitor construction impacts at sensitive places for laydown activities, civil, drainage and concrete works at Dutton Park and for civil, piling and concrete works at Moorooka station. The RIS contractor reported that the project noise requirements have been met during this reporting month. Monitoring results for the Southern Area are detailed in **Appendix A** (Section 2.1 and Table 1).

For areas where monitoring was not completed, including the Out of Hours works, potential noise levels have been previously assessed and monitored for similar activities. Subsequently these works and their potential noise levels were deemed consistent with previous monitoring undertaken for the project across the relevant locations. A summary of noise monitoring events for the month is provided in the chart below:



2.2.2. Vibration

For the Central Area, vibration monitoring was undertaken at Charlotte Street and Mary Street in the Albert Street precinct in April 2026. A technical issue prevented data from being extracted for a February 2026 monitoring event at George Street, this has been included in this reporting month. The TSD contractor reported the vibration requirements have been met. Monitoring results are detailed in **Appendix B** (Section 3.1 and Table 2).

For the Southern Area, vibration monitoring was undertaken at Ipswich Road at Clapham Yard in April 2026. The RIS contractor reported the vibration requirements have been met. Monitoring results are detailed in **Appendix A** (Section 2.2 and Table 2).

For the Mayne and Northern Areas, no vibration monitoring was undertaken during the period, and no complaint-based vibration monitoring was triggered.

2.2.3. Air Quality

2.2.3.1. Dust Deposition

Dust deposition monitoring was conducted at Mayne, Central and Southern Areas. Results met the project air quality goal¹ for all active worksites.

In the Mayne Area, an exceedance of the dust deposition goal was recorded at Mayne Yard North in April 2026. The Contractor attributed this exceedance to the immediate proximity between the stockpile and excavations activities, circa 1 meter from the monitoring apparatus. For that reason, it is unlikely that the elevated result is representative of the overall conditions across Mayne Yard. The air quality unit monitoring particulate matter (PM₁₀) and TSP recorded air quality levels well below the air quality goals and the Contractor received no dust related complaints in the reporting period. Furthermore, the Contractor maintained dust mitigation measures and visual inspections throughout the reporting period, confirming the Contractor met the requirements of the Imposed Conditions. For further details see **Appendix A** (Section 2.3, Table 3 and Figure 1, 2 and 3).

A summary of the dust deposition results for the reporting period is in the table below:

Air Quality – Dust Deposition Monitoring			
Area	Worksite	Monitoring Location	Comments
Mayne Area	Mayne Yard	Mayne Yard North	- Exceedance of air quality goal due to the gauge's close proximity to excavations and stockpile activities resulting in dust levels that are not considered representative of the levels experienced by surrounding stakeholders.
			- Contractor demonstrated project requirements were met through the implementation of site management practices as per the CEMP and Sub-Plans.
Central Area	Albert Street	Mary Street	- Results met air quality goal.
		Elizabeth Street	- Results met air quality goal.
	Boggo Road	Quarry Street (north of the site)	- Results met air quality goal.
		Peter Doherty Street/Leukaemia Foundation	- Results met air quality goal.
	Southern Portal	PA Hospital - Central Energy Unit along Kent Street	- Results met air quality goal.
	Roma Street	Roma Street station	- Results met air quality goal.
	Woolloongabba	Russian Orthodox Cathedral	- Results met air quality goal.
		Woolloongabba Busway	- Results met air quality goal.
Southern Area	Dutton Park	Tamar Street	- Results met air quality goal.
	Clapham Yard	Clapham Yard	- Results met air quality goal.
	Salisbury	Salisbury station car park	- Results met air quality goal.
		Salisbury Fairlie Terrace	- Results met air quality goal.

¹CG air quality goal for dust deposition - 120µg/m² (over an averaging period of 30 days).

2.2.3.2. Particulate Matter and Total Suspended Particulates

Monitoring for particulate matter (PM₁₀) and total suspended particulates (TSP) was conducted at Mayne, Central and Southern Area worksites during the reporting period. Both contractors confirmed their results obtained throughout the month met the project goals at all active worksites.

In the Mayne Area, the Mayne Yard mobile air quality unit experienced technical difficulties from 26 March 2026. Trouble shooting was conducted as soon as practical but the issue could not be resolved. The unit was returned to the manufacturer for a solution and a rental unit was installed

on 3 April 2026. The contractor confirmed dust mitigation measures were in place and works appropriately managed. No exceedances were recorded whilst the unit was functioning and no dust related complaints were received, confirming the contractor met the requirements of the Imposed Conditions. Refer to **Appendix A** (Section 2.3.2 and 2.3.3, Figure 2 and 3).

In the Central Area, on 25 April 2026 the manufacturer’s online dashboard was offline due to maintenance and no data was reported for the Albert Street, Woolloongabba and Boggo Road mobile air quality units. Furthermore, the Albert Street air quality unit experienced technical difficulties on 28 April 2026. The unit was inspected and dispatched to the manufacturer for repair and a rental unit was installed on the same day. The nearby DETSI (South Brisbane, Brisbane CBD and Woolloongabba) air quality monitoring stations confirmed air quality levels were below the air quality goals during the outage period for all three locations. Refer to **Appendix B** (Section 3.3.2, Table 5 and Figure 1-3).

A summary of particulate monitoring is provided in the table below:

Air Quality – PM ₁₀ / TSP Monitoring			
Area	Worksite	Monitoring Location	Comments
Mayne Area	Mayne Yard	Mayne Yard East	<ul style="list-style-type: none"> - Results met air quality goals. - Technical difficulties from 26 March 2026 until 3 April 2026.
Central Area	Albert Street	iStay River City (Corner of Mary Street and Albert Street)	<ul style="list-style-type: none"> - Results met air quality goals. - Technical difficulties occurred on 25 and 28 April 2026.
	Boggo Road / Southern Portal	Northeast of Boggo Road worksite	<ul style="list-style-type: none"> - Results met air quality goals. - Technical difficulties occurred on 25 April 2026.
	Woolloongabba	Place Park, Woolloongabba	<ul style="list-style-type: none"> - Results met air quality goals. - Technical difficulties occurred on 25 April 2026.
Southern Area	Clapham Yard	Clapham Yard	<ul style="list-style-type: none"> - Results met air quality goals.

2.2.4. Water Quality

Water quality monitoring and reporting was undertaken in accordance with the contractors CEMP and Water Quality Management Plans.

2.2.4.1. Surface Water

During April 2026, active surface water discharges occurred in the Central Area. Post-rainfall water quality monitoring was not triggered at any site.

In the Central Area, active surface water discharge monitoring occurred on three (3) occasion at

Roma Street. The monitoring results demonstrated active surface water discharges met project water quality discharge criteria. Refer to **Appendix B** (Section 3.4.2 and Table 7) for further details.

Routine surface water monitoring was undertaken across the TSD worksites during the reporting period. Results from the locations reflect the condition of the broader catchment upstream from the worksites. Refer to **Appendix B** (Section 3.5 and Table 8) for further details.

Surface water quality monitoring is summarised in the table below:

Surface Water Quality Monitoring					
Area	Worksite	Discharge	Post-Rain Monitoring	Routine Monitoring	Comments
Mayne Area	Mayne Yard North	No	No	No	- ESC was implemented in accordance with site specific ESC Plan.
Northern Area	Northern Corridor	No	No	No	- ESC was implemented in accordance with site specific ESC Plan.
Central Area	Albert Street	No	No	Yes	- Routine in-stream monitoring undertaken in accordance with WQMP. - ESC was implemented in accordance with site specific ESC Plan.
	Boggo Road	No	No	Yes	- Routine in-stream monitoring undertaken in accordance with WQMP. - ESC was implemented in accordance with site specific ESC Plan.
	Roma Street	Yes	No	Yes	- Active surface water discharge met water quality investigation criteria. - Routine in-stream monitoring undertaken in accordance with WQMP. - ESC was implemented in accordance with site specific ESC Plan.
	Woolloongabba	No	No	Yes	- Routine in-stream monitoring undertaken in accordance with WQMP. - ESC was implemented in accordance with site specific ESC Plan.
	Southern Portal	No	No	No	- ESC was implemented in accordance with site specific ESC Plan.
Southern Area	Dutton Park	No	No	No	- ESC was implemented in accordance with site specific ESC Plan.
	Clapham Yard	No	No	No	- ESC was implemented in accordance with site specific ESC Plan.
	Salisbury	No	No	No	- ESC was implemented in accordance with site specific ESC Plan.

This document is the property of the Cross River Rail Delivery Authority. It may not be copied or reproduced without permission.

2.2.4.2. Groundwater

There were no groundwater discharges at Mayne, Northern, Central or Southern Area worksites. Groundwater quality monitoring is summarised in the table below:

Groundwater Quality Monitoring			
Area	Worksite	Discharge	Comments
Mayne Area	Mayne Yard North	No	- No groundwater discharges.
Northern Area	RNA / Exhibition	No	- No groundwater discharges.
	Northern Portal	No	- No groundwater discharges.
Central Area	Albert Street	No	- No groundwater discharges.
	Boggo Road / Southern Portal	No	- No groundwater discharges.
	Roma Street	No	- No groundwater discharges.
	Woolloongabba	No	- No groundwater discharges.
Southern Area	Clapham Yard	No	- No groundwater discharges.

¹ The Brisbane River Estuary environmental values and water quality objectives (Basin no 143 – mid-estuary) in the Environmental Protection (Water) Policy 2009

2.2.5. Erosion and Sediment Control

Site specific Erosion and Sediment Control (ESC) Plans have been prepared, updated, and implemented at Mayne Yard, Normanby, Northern Portal, Roma Street, Albert Street, Woolloongabba, Boggo Road, Southern Portal, Southern, Dutton Park, Moorooka, Clapham Yard and Salisbury worksites.

2.3. Complaints Management

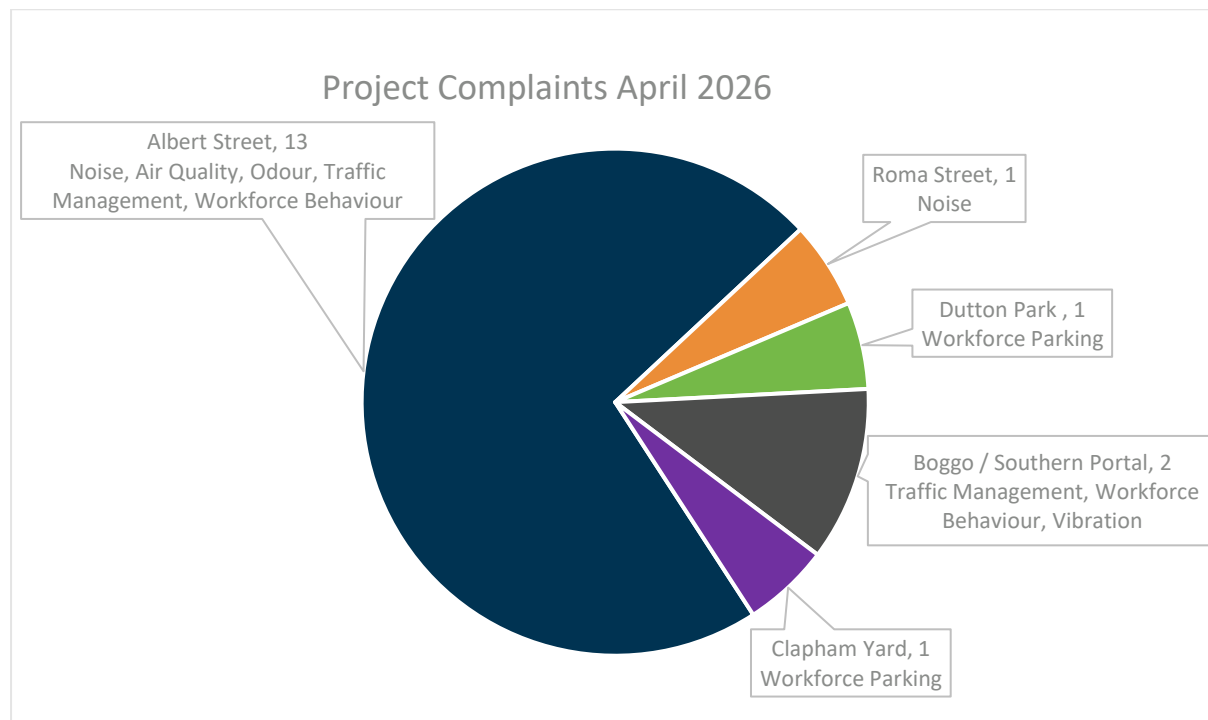
A total of twenty (20) complaints were received during the month, of which eighteen (18) were project related.

RIS works received two (2) complaints in April 2026, related to workforce parking at Dutton Park and Clapham Yard. Refer to **Appendix A** (Section 4 and Table 6) for further details.

TSD works received sixteen (16) project related complaints in April 2026. These related to workforce behaviour, traffic management, odour, air quality and noise at Albert Street, noise at

Roma Street, vibration, workforce behaviour and traffic management at Boggo Road. For further details and a breakdown of complaints, refer to **Appendix B** (Section 5 and Table 10).

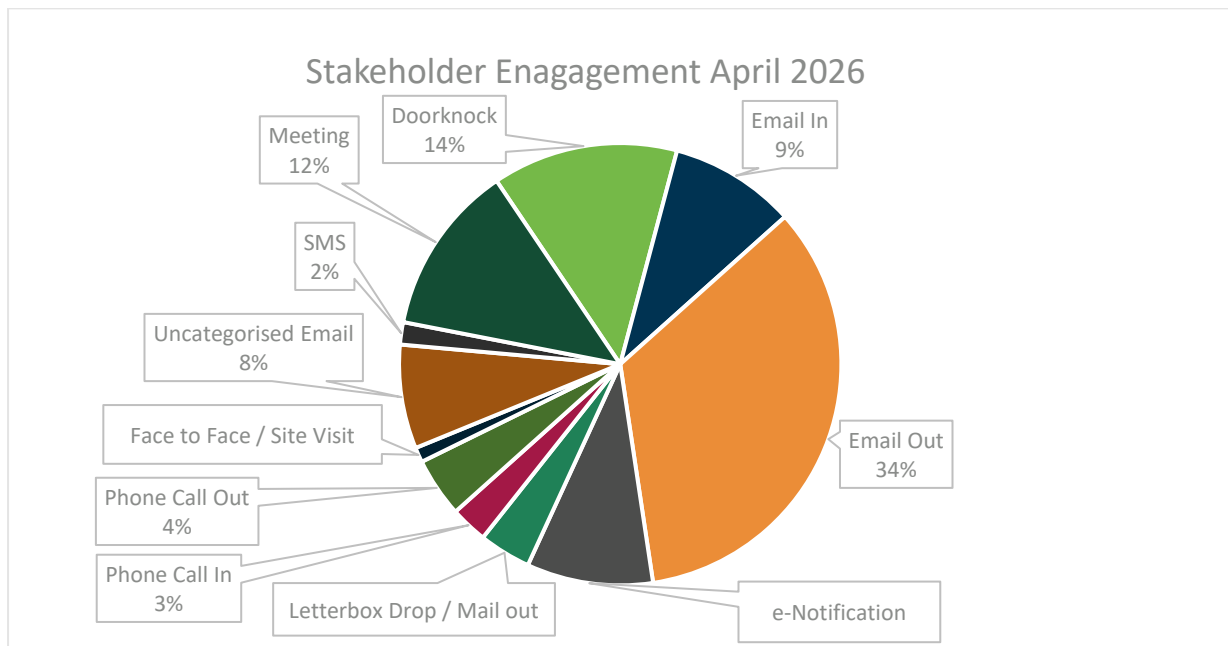
The Project Works related complaints summary for the month is provided in the chart below:



When attended noise monitoring was undertaken in response to a complaint, the contractor confirmed on all occasions that works undertaken at the time of the complaint adhered to project requirements. In all instances this month, previously attended noise monitoring data, representative of the relevant construction activities was used to confirm the works adhered to the project noise requirements.

To close out a complaint, the monitoring data is reviewed (where applicable) against compliance with the CEMP, site environmental management plans and permits, and checks that required community notification has taken place. Contractors have also confirmed that planned mitigation to reduce the impact was implemented. These controls were reviewed collectively together to verify if project requirements have been met.

For scheduled out-of-hours works, community notification was provided, as well as regular project updates. Stakeholder engagement undertaken on the project during the month is in the chart below.



2.4. New Upcoming Project Works

The key new planned Project Works for the coming months include:

Area	New planned works in the coming months
Mayne Area	<p>Mayne Yard North –</p> <ul style="list-style-type: none"> • Nil. <p>Mayne Yard East / West –</p> <ul style="list-style-type: none"> • Finalise crew building carpark construction; • Ongoing earthworks, Combined Services Route (CSR), drainage, stormwater, and Rail Systems works in Mayne East entry roads; • Signalling testing and commissioning; • Installation of cable routes and pits within the rail corridor; • Fibre terminations and testing to continue; • Continue construction of the new rail bridge over Breakfast Creek and finalise culvert maintenance access track; and • Rail track construction including formation works, ballast placement, sleeper and rail construction, resurfacing and welding works.
Northern Area	<p>RNA / Exhibition –</p> <ul style="list-style-type: none"> • Submit final submission of as-constructed works submitted for review. <p>Northern Corridor –</p> <ul style="list-style-type: none"> • Fibre terminations and testing to continue; • Track works and maintenance; and • Normanby Digital Radio System (DRS) – final integration with QR once Sequence completes their testing and handback to Unity.

Area	New planned works in the coming months
Central Area	<p>Roma Street –</p> <ul style="list-style-type: none"> Urban realm works including completion of Pocket Park works while continuing footpath constructions, road resurfacing and sewer and stormwater infrastructure installation; Continue architectural fitout in station entry building, including completion of ticket office, ground level and QR transition area; Complete Platform 1 works and prepare handover to TMR; and Acoustic shed slab removal. <p>Albert Street –</p> <ul style="list-style-type: none"> Lot 1 – continue canopy with cladding, roof sheeting, external wall finishing and commence Lot 1 concrete slab removal; Lot 2 – Finalise acoustic shed slab demolition, earthworks and drainage, continue M&E installation and defect walkthrough, finalise terrazzo tiling and comms fitout; Lot 3 – Continue station fitout, M&E installation, flood barrier works; and Green Spine – removing and replacing existing street furniture, underground services and pavement works and installing lighting, traffic signals. <p>Woolloongabba –</p> <ul style="list-style-type: none"> Continue cladding, soffits, tiling and complete ticket office and escalator fitout; Gibbon and Leopard streets utility works; Finalise water feature; LV switch rooms ready for T&C and Energex supply connection upcoming; and Ongoing pavement, landscaping and M&E fitout works. <p>Boggo Road –</p> <ul style="list-style-type: none"> Ongoing M&E fitout works; Continue terrazzo tiling, electrical terminations and TVS electrical works; Continue installation of services in the canopy; and Landscaping and station precincts works including public utility plant (PUPs) with stormwater, electrical conduits and comms; and Demolish the tower crane base. <p>Southern Portal –</p> <ul style="list-style-type: none"> Bridge works continue with screen installation and lift fitout; Precinct utility works; Caisson pumping station works ongoing; and Continue works on the sediment basins.
Southern Area	<p>Southern to Salisbury Rail Corridor –</p> <ul style="list-style-type: none"> Continue corridor drainage, civils, OHLE works, cable routes and drainage during available SCAS including limited scope during normal weekdays where possible. <p>Dutton Park –</p> <ul style="list-style-type: none"> Works along Ensign Avenue and Fenton Street; and Finalise reinstatement of TRI Kent Street.

Area	New planned works in the coming months
	<p>Yeerongpilly Station –</p> <ul style="list-style-type: none"> Final close-out. <p>Moorooka –</p> <ul style="list-style-type: none"> Platform 1 and 2 inground services, lift pits and piling; Complete Ipswich Road piling; Commence drainage works on the commuter carpark and retaining wall works; and Installation of drainage, service conduits and pits for electrical, communications and cable routes within the rail corridor. <p>Clapham Yard –</p> <ul style="list-style-type: none"> Track construction; Crew Maintenance Facility lift installation and fitout works; Rail Traffic Crew Building frame and roofing works; ROS, OHLE and Signalling foundations; Complete Viaduct (BR91) pile cap on Pier 2; Continue retaining wall works and offsite signalling hut fitout; and Interlocking preliminary design submission. <p>Rocklea Station –</p> <ul style="list-style-type: none"> Final close-out. <p>Salisbury –</p> <ul style="list-style-type: none"> ETCS equipment installation; Reestablishment of site works in the rail corridor; and Finalise Practical Completion (PC).

2.5. Non-Compliance Events

No NCEs were recorded in April 2026. A summary of NCEs to date is shown in the table below.

Status	Date of Event	Category	Area as on the Report	Relevant Condition	Gate 1	Gate 2	Gate 3	Gate 4
Open								
Closed								
	CRRDA-001-RIS-001	Noise	Yeronga Station	4, 10, 11	10/11/19	14/11/19	26/11/19	18/12/19
	CRRDA-002-TSD-001	ESC	Woolloongabba	4, 15, 18	30/03/20	31/03/20	22/04/20	11/06/20
	CRRDA-003-TSD-002	ESC	Boggo Rd	4, 15, 18	30/03/20	31/03/20	22/04/20	11/06/20
	CRRDA-004-TSD-003	Traffic	Boggo Rd	4, 10, 14	30/03/20	31/03/20	22/04/20	11/06/20
	CRRDA-005-TSD-004	Reporting	Multiple sites	4, 6, 11, 13	30/03/20	31/03/20	22/04/20	11/06/20
	CRRDA-006-TSD-005	Air Quality	Multiple sites	13	30/03/20	31/03/20	22/04/20	11/06/20
	CRRDA-009-RIS-003	ESC	Clapham Yard	4	28/10/22	28/10/22	12/12/22	12/12/22
	CRRDA-010-RIS-004	Acid Sulphate Soils Management	Clapham Yard	4, 19	28/10/22	28/10/22	12/12/22	12/12/22
	CRRDA-11-RIS-005	Out Of Hours Works	Fairfield Station	4,10	14/07/23	14/07/23	14/07/23	12/09/23
	CRRDA-12-RIS-006	Construction Traffic Management	Salisbury	4,7,14	04/07/24	04/07/24	04/07/24	11/09/24
Withdrawn								
	CRRDA-007-RIS-002	Air Quality	Multiple sites	13	28/04/20	30/04/20	Withdrawn	
	CRRDA-008-TSD-006	Working Hours	Roma Street	4,10	28/04/20	30/04/20	Withdrawn	

Gate 1 - EM notification to contractor. NCE confirmed
Gate 2 - 48 hour NCE notification submitted to CG
Gate 3 - 14 day report submitted
Gate 4 - 14 day report uploaded to CRR website

Appendix A RIS Monthly Report

This document is the property of the Cross River Rail Delivery Authority. It may not be copied or reproduced without permission.



COORDINATOR-GENERAL'S MONTHLY REPORT: April 2026

Prepared in accordance with Coordinator-General Imposed Condition 6 - Reporting.

Project number:	Q01080
Document number:	RIS-UNA-ENV-MRP-06610-046
Revision date:	29/05/2026
Revision number:	01

1 Monthly Monitoring Summary

It is UNITY's intent to aim for the Goals and Objectives relevant to vibration, noise, air quality and water monitoring within the practical extent of delivering the Project.

Vibration monitoring was conducted on one (1) occasion during April 2026. Noise monitoring was undertaken on eighteen (18) occasions in April 2026. Each monitoring event that was undertaken confirmed works adhered to Project requirements.

Ambient air quality monitoring was conducted at the Mayne and Clapham Yards during April 2026. Air quality monitoring confirmed works adhered to Project requirements.

Water quality monitoring was not triggered during the reporting period.

2 Environmental Monitoring Results

Monitoring data is provided below in accordance with Imposed Condition 6(b)(i).

2.1 Noise Monitoring

Noise requirements (levels) are defined as goals within Imposed Condition 11. The goals are to be aimed for.

The Coordinator-General's Change Report acknowledges instances where these goals may not be achieved. Noise monitoring was conducted on eighteen (18) occasions during April 2026. All noise monitoring adhered to Project requirements and monitoring results are detailed in the table below.

Table 1: Noise Monitoring Data

No.	Date/ Time	Location (Street Name) (Construction area)	Purpose of Monitoring	Internal or External [3] Monitoring	Activity	Dominant Noise Source	Noise Goal	Noise level	Noise Goal	Noise level	Adhered to Project Requirements (Yes / No)
							LA10[1]	LA10	LAeq[2]	LAeq	
1.	01/04/2026 08:43	McDonald Road (Mayne Yard)	Construction Monitoring at Sensitive Places	External	Civil and Track Works	Non-Project Related Traffic Noise	60	62.5	50	59.3	Yes
2.	02/04/2026 12:04	Ipswich Road (Moorooka)	Construction Monitoring at Sensitive Places	External	Civil Works	Non-Project Related Traffic Noise	65	67.5	55	64.8	Yes
3.	07/04/2026 13:44	Keats Street (Moorooka)	Construction Monitoring at Sensitive Places	External	Piling Works	Construction Noise	65	71.1	55	65.5	Yes
4.	08/04/2026 11:27	Ipswich Road (Moorooka)	Construction Monitoring at Sensitive Places	External	Piling Works	Construction Noise	70	68.8	60	65.6	Yes
5.	08/04/2026 12:48	Station Road (Moorooka)	Construction Monitoring at Sensitive Places	External	Civil Works	Non-Project Related Traffic Noise	70	62.2	60	59.4	Yes
6.	09/04/2026 09:37	Evesham Street (Moorooka)	Construction Monitoring at Sensitive Places	External	Civil Works	Construction Noise	70	56.0	60	53.9	Yes
7.	09/04/2026 09:57	Evesham Street (Moorooka)	Construction Monitoring at Sensitive Places	External	Piling Works	Construction Noise	70	65.3	60	67.0	Yes
8.	09/04/2026 11:48	McDonald Road (Mayne Yard)	Construction Monitoring at Sensitive Places	External	SCAS Civil and OHLE Works	Non-Project Related Traffic Noise	60	61.9	50	57.8	Yes
9.	09/04/2026 12:15	Corunna Street (Mayne Yard)	Construction Monitoring at Sensitive Places	External	SCAS Civil Works	Construction Noise	70	61.6	60	59.4	Yes
10.	10/04/2026 08:50	McDonald Road (Mayne Yard)	Construction Monitoring at Sensitive Places	External	SCAS Civil and OHLE Works	Construction Noise	65	59.2	55	60.8	Yes

11.	14/04/2026 09:17	Corunna Street (Mayne Yard)	Construction Monitoring at Sensitive Places	External	SCAS Civil and Track Works	Construction Noise	65	68.6	55	66.7	Yes
12.	14/04/2026 09:45	McDonald Road (Mayne Yard)	Construction Monitoring at Sensitive Places	External	Track Works	Construction Noise	60	61.0	50	57.8	Yes
13.	14/04/2026 10:10	McDonald Road (Mayne Yard)	Construction Monitoring at Sensitive Places	External	SCAS Civil and Track Works	Construction Noise	65	60.6	55	58.2	Yes
14.	16/04/2026 10:30	Fenton Street (Dutton Park)	Construction Monitoring at Sensitive Places	External	Laydown Activities	Construction Noise	60	53.4	50	52.4	Yes
15.	16/04/2026 11:15	Redarc Street (Dutton Park)	Construction Monitoring at Sensitive Places	External	Drainage Works	Construction Noise	60	65.8	50	61.6	Yes
16.	21/04/2026 22:10	Annerley Road (Dutton Park)	Construction Monitoring at Sensitive Places	External	Concrete Works	Non-Project Related Traffic Noise	52	64.2	45	62.7	Yes
17.	29/04/2026 08:51	Evesham Street (Moorooka)	Construction Monitoring at Sensitive Places	External	Concrete Works	Construction Noise	70	63.8	60	61.8	Yes
18.	29/04/2026 12:04	Cornwall Street (Dutton Park)	Construction Monitoring at Sensitive Places	External	Civil Works	Construction Noise	65	61.0	55	58.9	Yes

[1] Intermittent noise goal (LA10)

[2] Continuous noise goal (LAeq)

2.2 Vibration Monitoring

Vibration requirements (levels) are defined as goals within Imposed Condition 11. The goals are to be aimed for. The Coordinator-General's Change Report acknowledges instances where these goals may not be achieved. Vibration monitoring was conducted on one (1) occasion during April 2026. All vibration monitoring results adhered to Project requirements and are detailed in the table below.

Table 2: Vibration Monitoring Data

No.	Start Date	Finish Date	Location	Max Vibration Level (mm/s)	Vibration Goal (mm/s)	Adhered to Project Requirements (Yes / No)
1.	07/04/2026	07/04/2026	Clapham Yard (Ipswich Road)	4.790	10	Yes

2.3 Air Quality

Air quality requirements (levels) are defined as goals within Imposed Condition 13. The goals are to be aimed for. The Coordinator-General's Change Report acknowledges instances that exist when these goals may not be achieved.

Visual monitoring was undertaken during routine environmental inspections. A total of 17 inspections were undertaken by the Environment Team throughout the reporting period across Mayne Yard, Dutton Park, Clapham Yard and Moorooka Precinct.

UNITY undertakes air quality monitoring using dust deposition gauges (DDGs), Total Suspended Particles (TSP) and particulate matter less than 10µm (PM10). TSP and PM10 are monitored using portable air quality units.

Air quality monitoring results are provided below.

2.3.1 Deposited Dust Results

Passive dust deposition gauge (DDG) samples are analysed monthly.

The dust deposition gauge results (and total rainfall) for the reporting period are detailed below.

Table 3: Air Quality Monitoring - Deposited Dust Data

CGCR Goal (mg/m ² /day)	AQ-04 Grafton Street (Mayne Yard) (mg/m ² /day)	AQ-06 Clapham Yard (mg/m ² /day)	AQ-09 Yeerongpilly Station (mg/m ² /day)	AQ-11 Dutton Park (mg/m ² /day)	AQ-12 Salisbury, Lillian Avenue (mg/m ² /day)	AQ-13 Salisbury, Fairlie Terrace (mg/m ² /day)
120	193	13	7	3	13	10
Total Rainfall (mm)	28.4	52.1	52.1	59.0	22.8	22.8

Dust Deposition - April 2026 Reporting Period

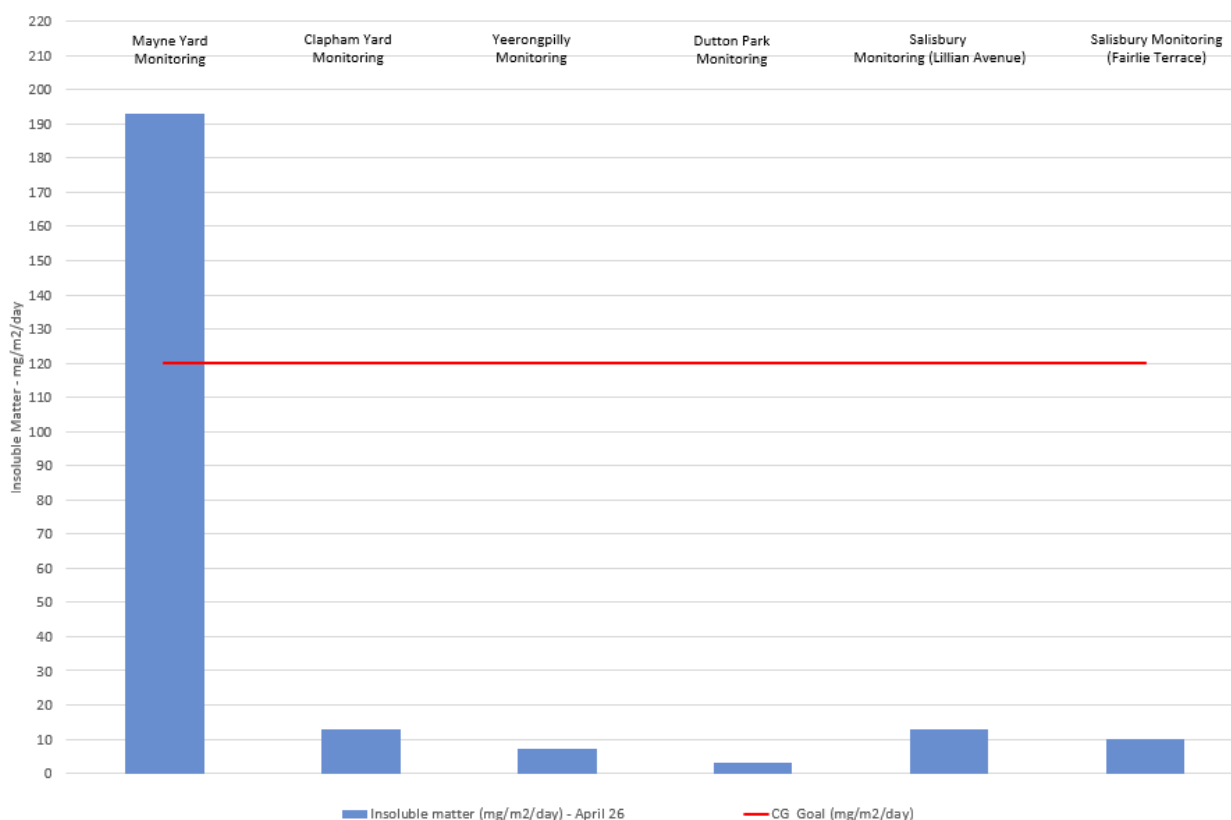


Figure 1: Air Quality Monitoring - Deposited Dust Data

2.3.1.1 Interpretation

Dust Deposition Guage, AQ-04 Elevated Result

During the April 2026 reporting period the Mayne Yard DDG recorded a total insoluble matter of 193 mg/m²/day. This result is attributed to the immediate proximity of excavations and stockpiling activities to the monitoring location, with the nearest excavation occurring within approximately one (1) metre of the monitoring apparatus. As such, the measured dust deposition rate is unlikely to be representative of conditions experienced at surrounding sensitive receptors and it is considered unlikely that significant air quality impacts were caused as a result of construction activities.

Further Notes:

- Dust mitigation measures were implemented and observed throughout the monitoring period.
- No complaints were received by the Project related to dust nuisance.
- No exceedances were recorded by the nearby continuous air quality monitoring apparatus (Figure 2 and Figure 3).

2.3.2 Ambient Air Quality Results

TSP and PM10 monitoring were conducted during April 2026. Targeted monitoring of potential dust-generating activities is conducted by the mobile air quality units and was completed at the Mayne Yard and Clapham Yard worksites during April 2026. No exceedances were recorded during this reporting period.

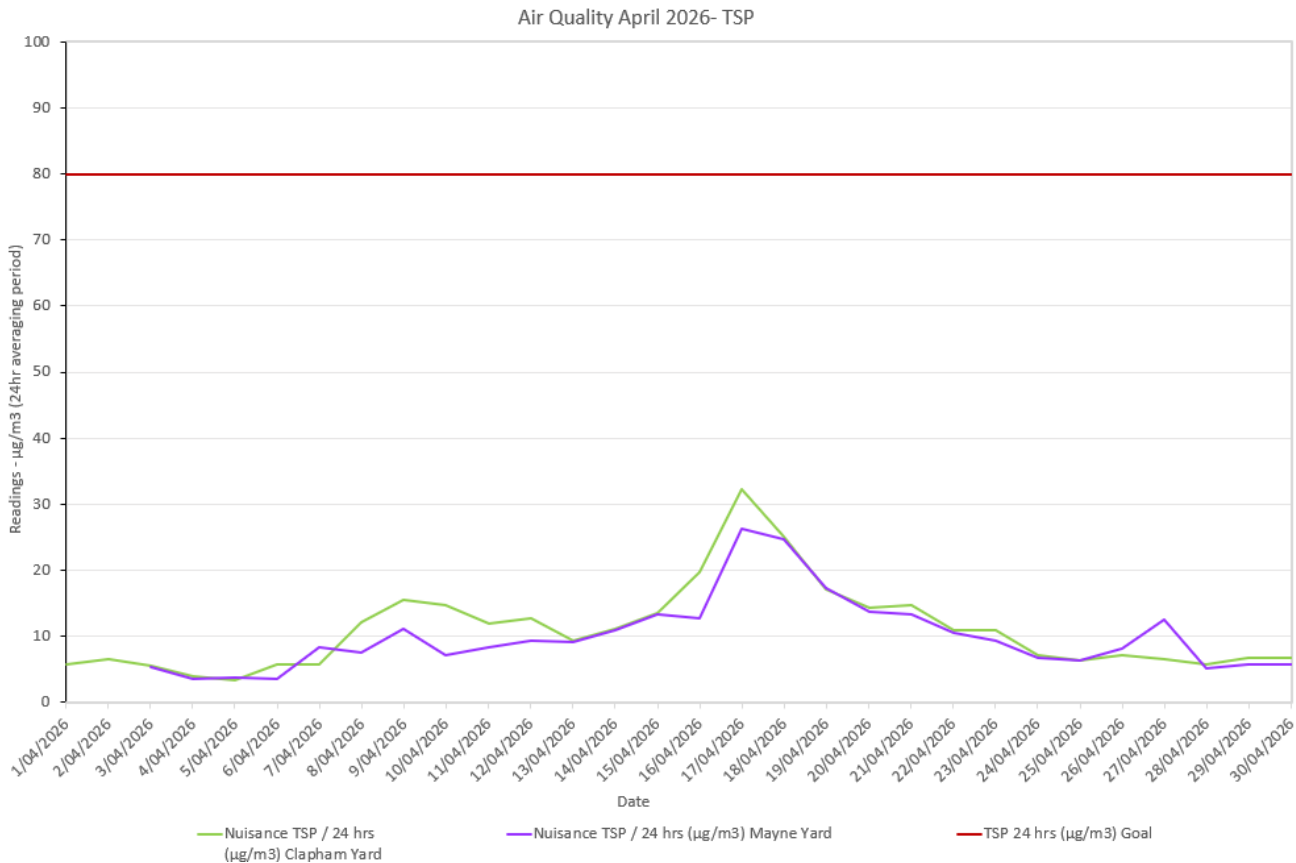


Figure 2: Air Quality Monitoring – Total Suspended Particles Data

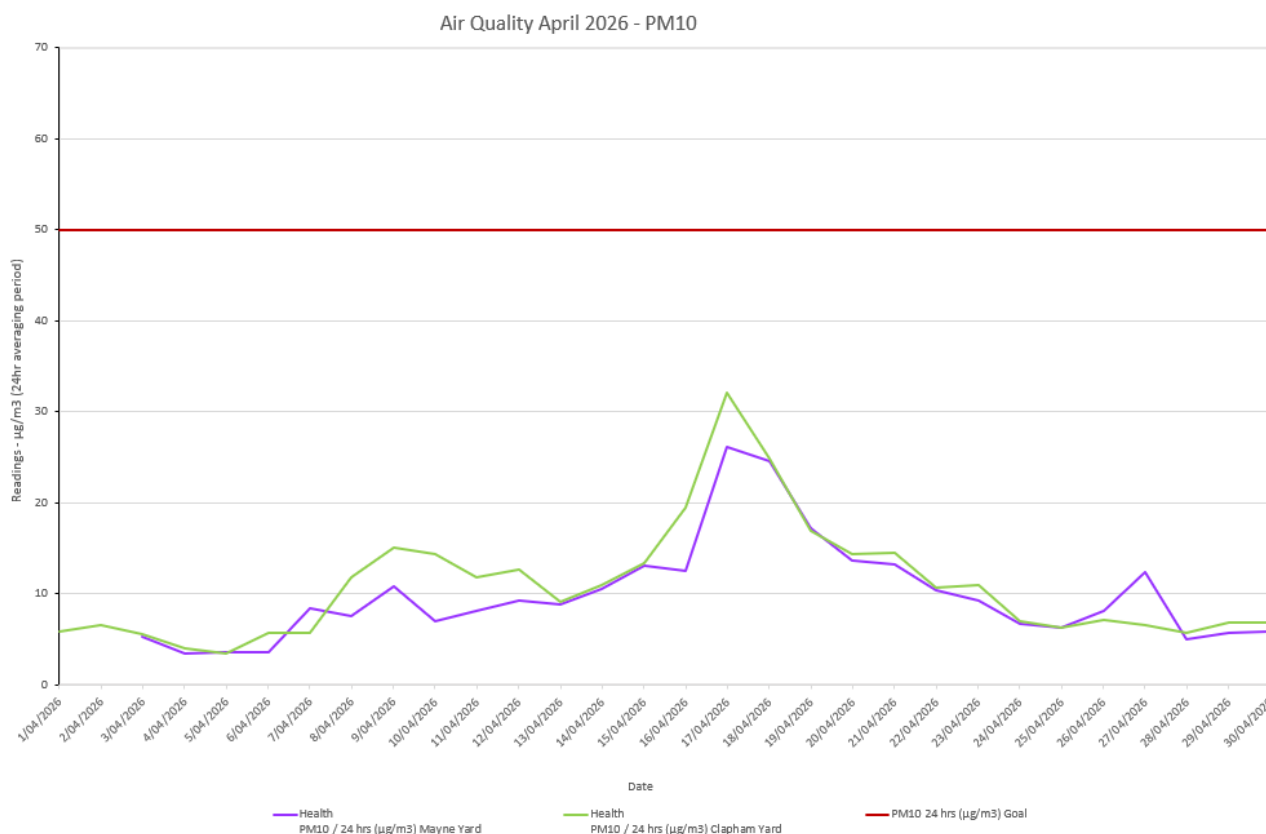


Figure 3: Air Quality Monitoring - PM10 Data

2.3.3 Interpretation

The Mayne Yard mobile air quality unit experienced technical issues from the 27 March 2026. Troubleshooting was conducted as soon as practical and following the manufacturer’s recommendations. The issue could not be resolved remotely, and the unit was sent out for further assessment to the authorised supplier. A replacement (rental) unit was installed on 3 April 2026.

Further notes:

- Site inspections confirmed dust mitigation measures were in place and construction works were appropriately managed.
- No exceedances were recorded by the air quality monitoring station throughout the remainder of the reporting period.
- No complaints were received by the Project related to dust nuisance.

2.4 Water Quality

Imposed Condition 15(b) requires that during construction, monitoring, and reporting on water quality in accordance with the Water Quality Management Plan, a sub-plan of the C-EMP, occurs.

Imposed Condition 15(a) requires that discharges of groundwater from Project Works within the Breakfast Creek catchment must comply with the Brisbane River Estuary environmental values and water quality objectives (Basin no.143 – mid-estuary) in the *Environment Protection (Water) Policy 2009*.

Imposed Condition 15(a) requires that discharges of groundwater from Project Works within Moolabin Creek, Yeerongpilly – Oxley Creek catchment must comply with the Oxley Creek - Lowland freshwater environmental values and water quality objectives (Basin no.143 (part) – including all tributaries of the Creek) in the *Environment Protection (Water) Policy 2009*.

Water quality monitoring was not triggered during the reporting period.

2.4.1 Water Quality – Post Rainfall Monitoring

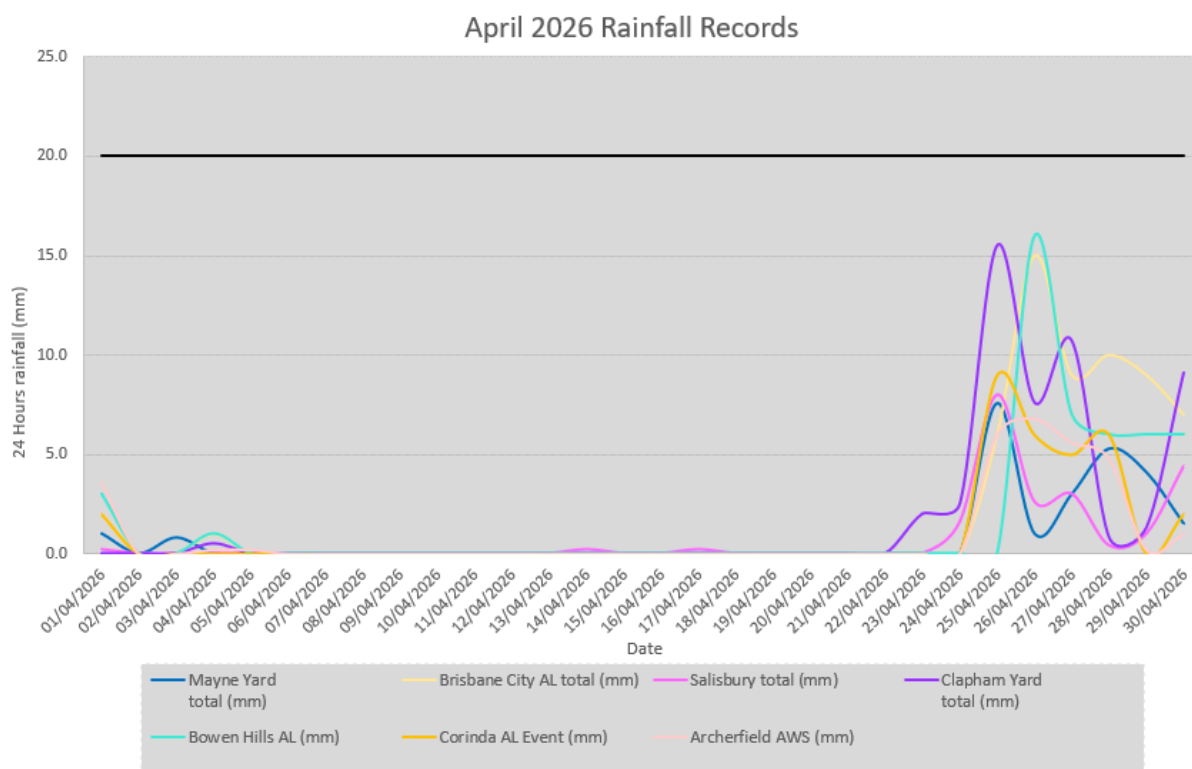


Figure 4: Rainfall Data

2.4.2 Water Quality – Routine Monitoring (Bi-annual)

Requirements related to bi-annual surface water quality monitoring and reporting were met with water sampling inherent to the wet season completed on 15 January 2026.

2.4.3 Groundwater Discharge Monitoring Results

Groundwater discharge monitoring was not triggered during the reporting period.

2.4.4 Surface Water Discharge Monitoring

Surface water discharge monitoring was not triggered during the reporting period.

3 Compliance review

3.1 Non-Compliance Events

The below section summarises the events to be reported in accordance with Imposed Condition 5 and Imposed Condition 6(b)(ii). A Non-Compliance event (NCE) is defined as Project works that do not comply with the Imposed Conditions. NIL non-compliances occurred during the reporting period.

Table 4: Summary of Non-Compliance Events

Event Title	Location, Date, and time of event	Date the Event was Formally Notified to CG/IEM	Conditions Affected	Date the Event Report Formally Sent to CG/IEM	Status of Event
NA	-	-	-	-	-

4 Complaints

Reporting of complaints is provided in accordance with Imposed Condition 6(b)(iii).

During April 2026, three (3) complaints were received by UNITY, as detailed below.

Table 5: Summary of Complaints

No.	Date	Location	Description of Issue	Response	Status of Event
1.	23/04/2026	Yeronga (Yeronga Railway Station)	Noise (Not related to Project works)	A stakeholder contacted the Project regarding noise during out of hours works. UNITY investigated the event and confirmed it was not related to Project works.	Closed
2.	28/04/2026	Chale Street (Clapham Yard)	Workforce Parking	A stakeholder reported concerns related to workforce parking in local streets. UNITY investigated the event and reminded the workforce of parking requirements.	Closed
3.	29/04/2026	Fenton Street (Dutton Park)	Workforce Parking	A stakeholder contacted the Project regarding workforce parking. UNITY investigated the event and reminded the workforce of parking requirements.	Closed

Attachment 1 Monitoring Locations – Noise

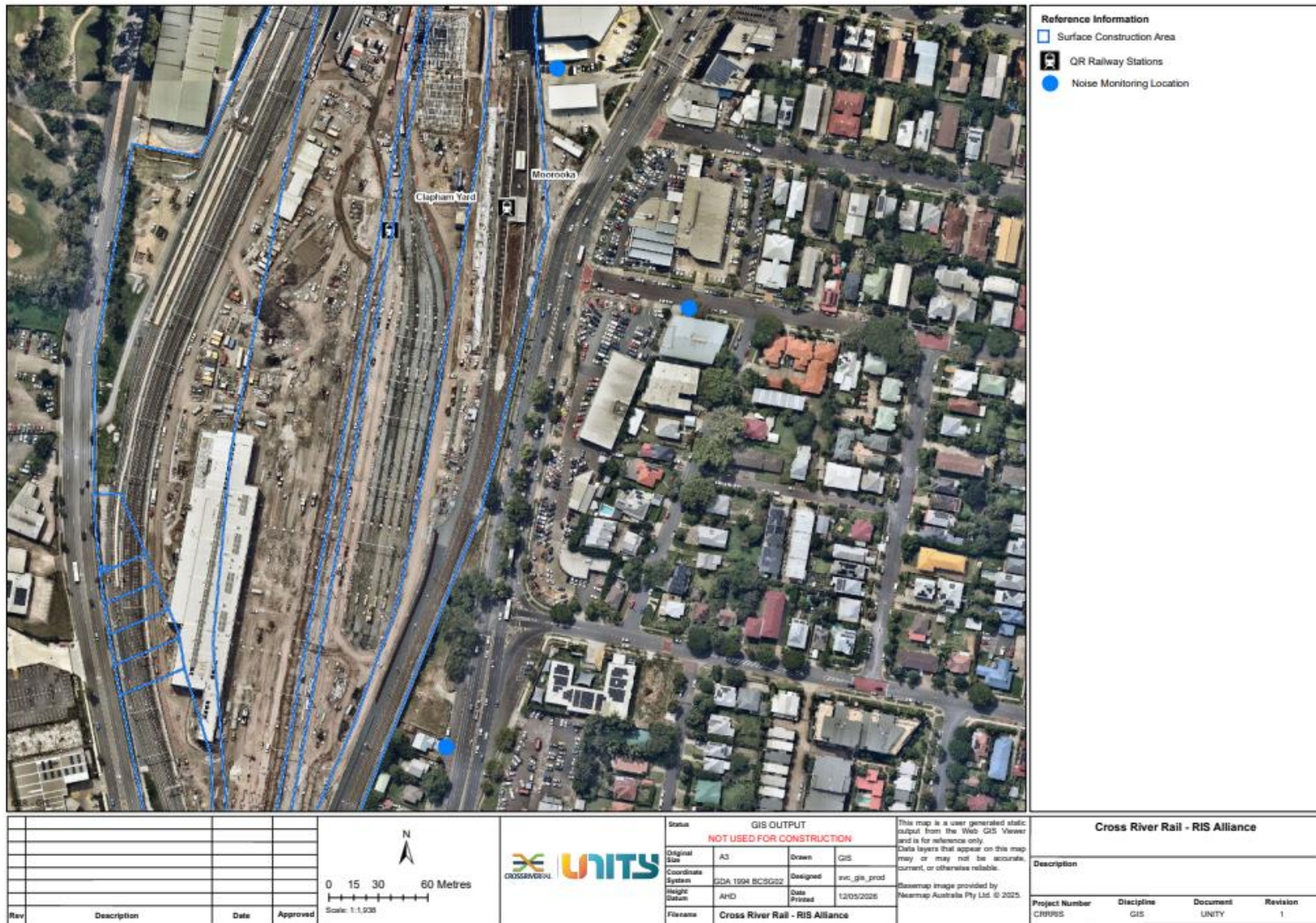


Figure 5: Clapham Yard and Moorooka Noise Monitoring Locations

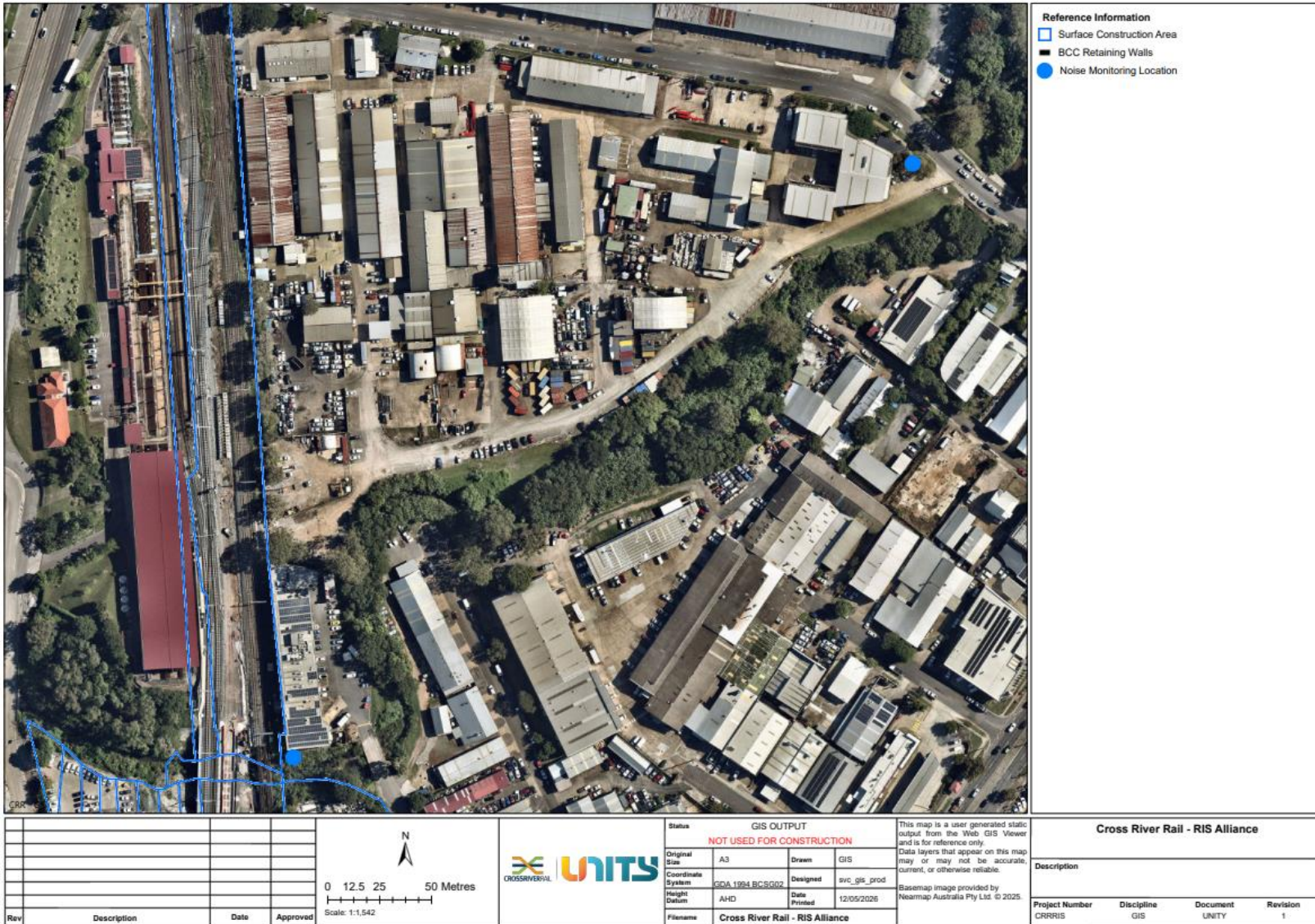


Figure 6: Clapham Yard and Moorooka Noise Monitoring Locations

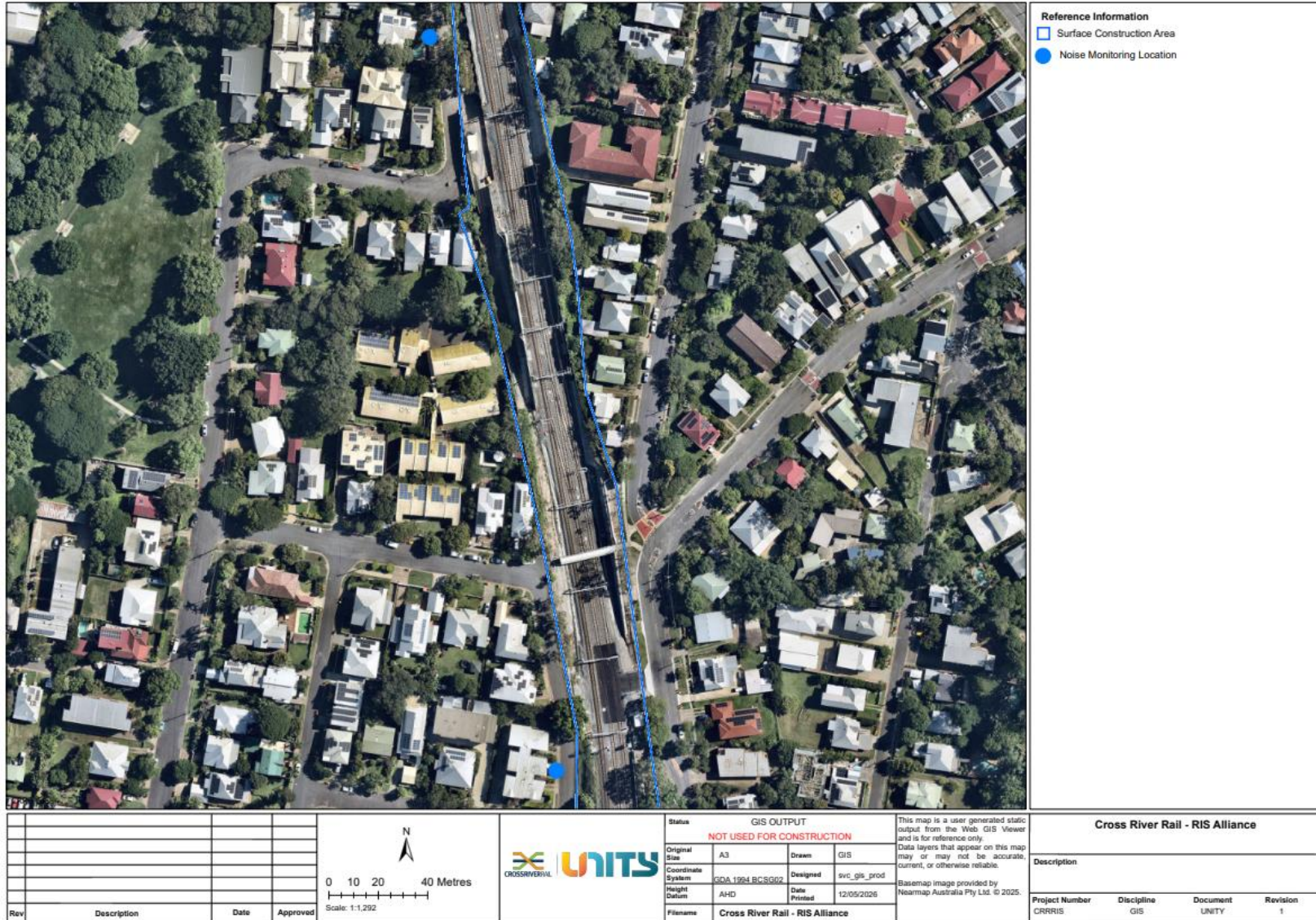


Figure 7: Dutton Park Noise Monitoring Locations

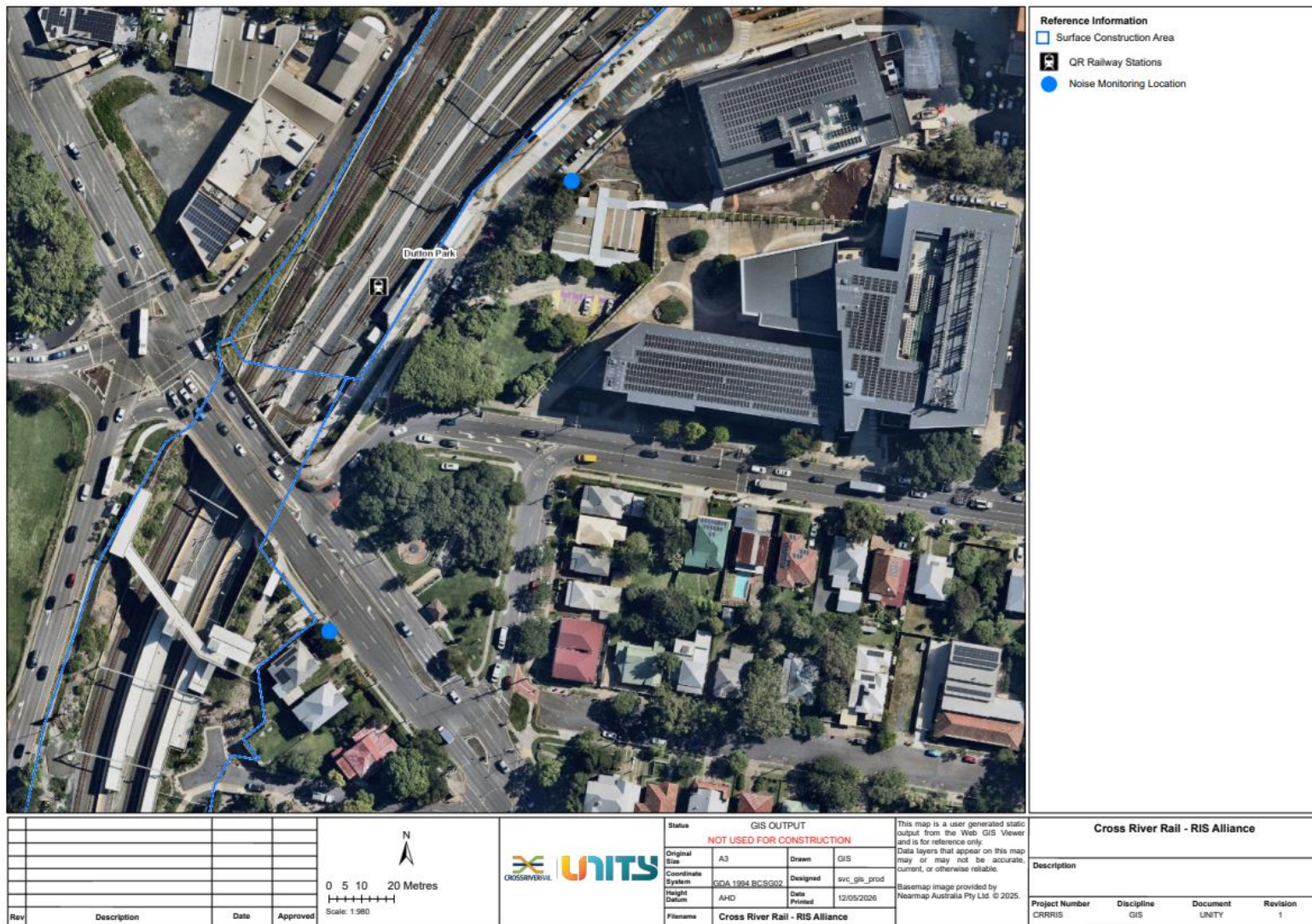


Figure 8: Dutton Park Noise Monitoring Locations

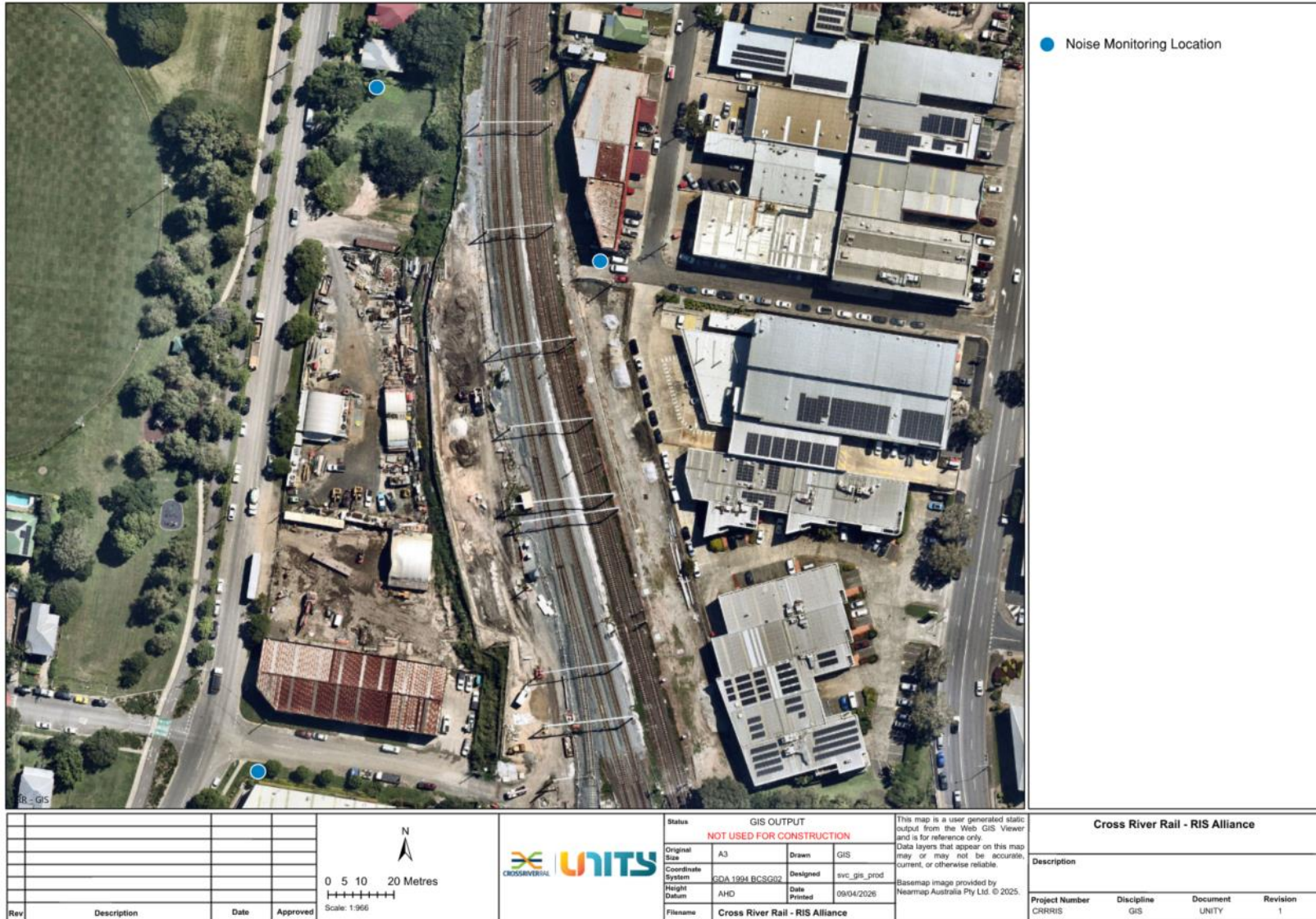


Figure 9: Mayne Yard Noise Monitoring Locations

Attachment 2 Monitoring Locations - Vibration

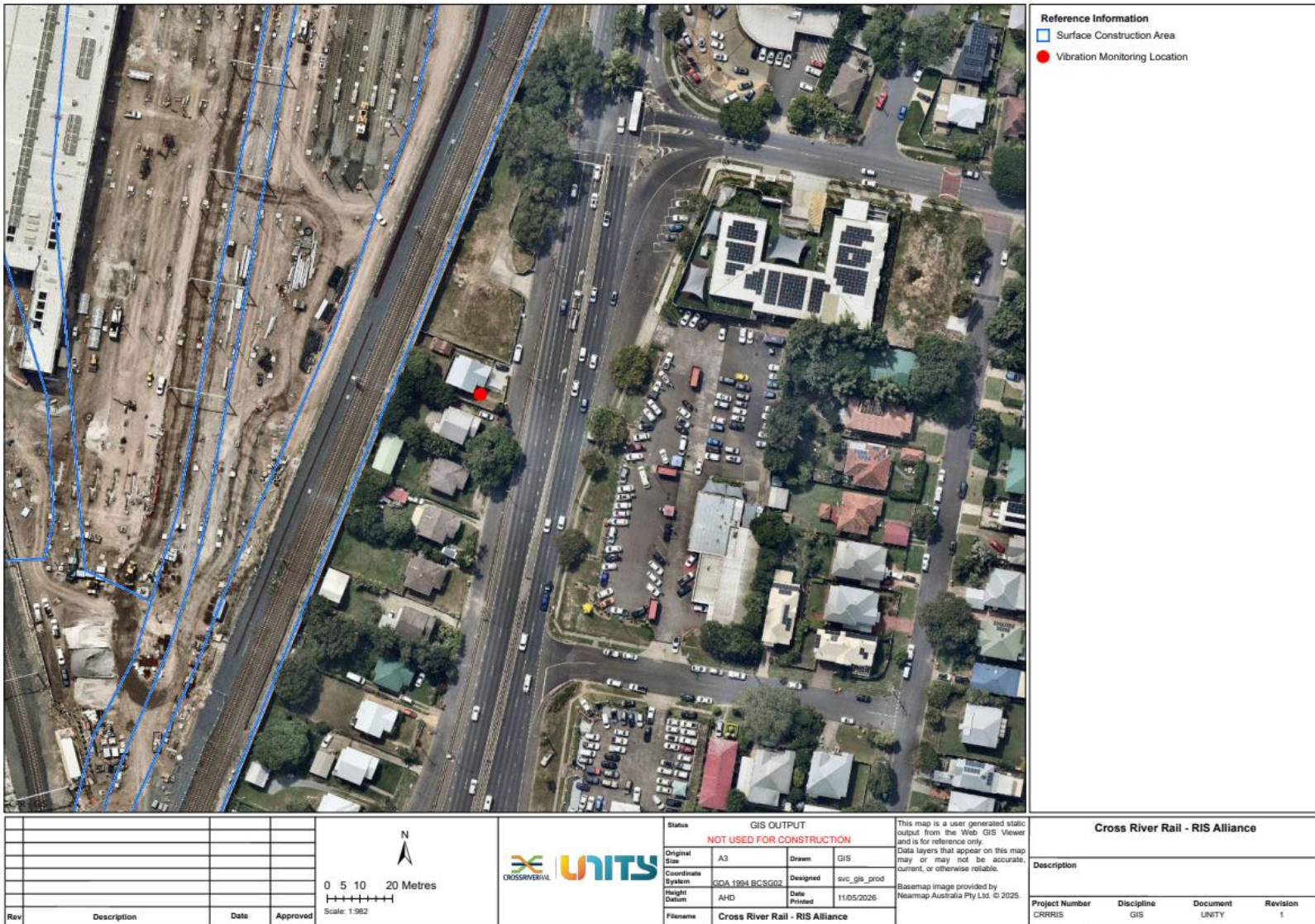


Figure 10: Clapham Yard and Moorooka Vibration Monitoring Location

Attachment 3 Monitoring Locations - Air Quality

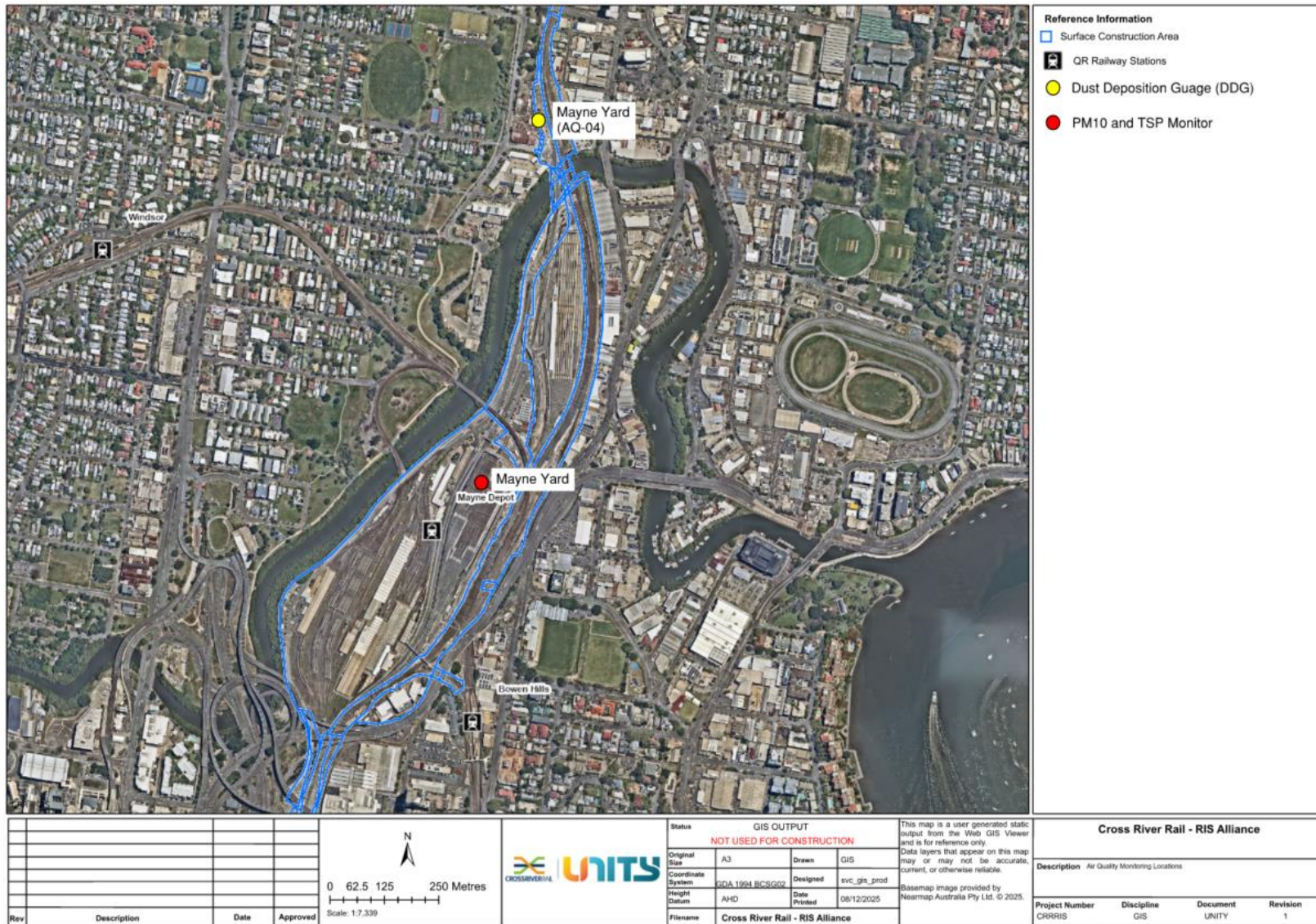


Figure 11: Mayne Yard AQ locations



Figure 12: Southern Area AQ location

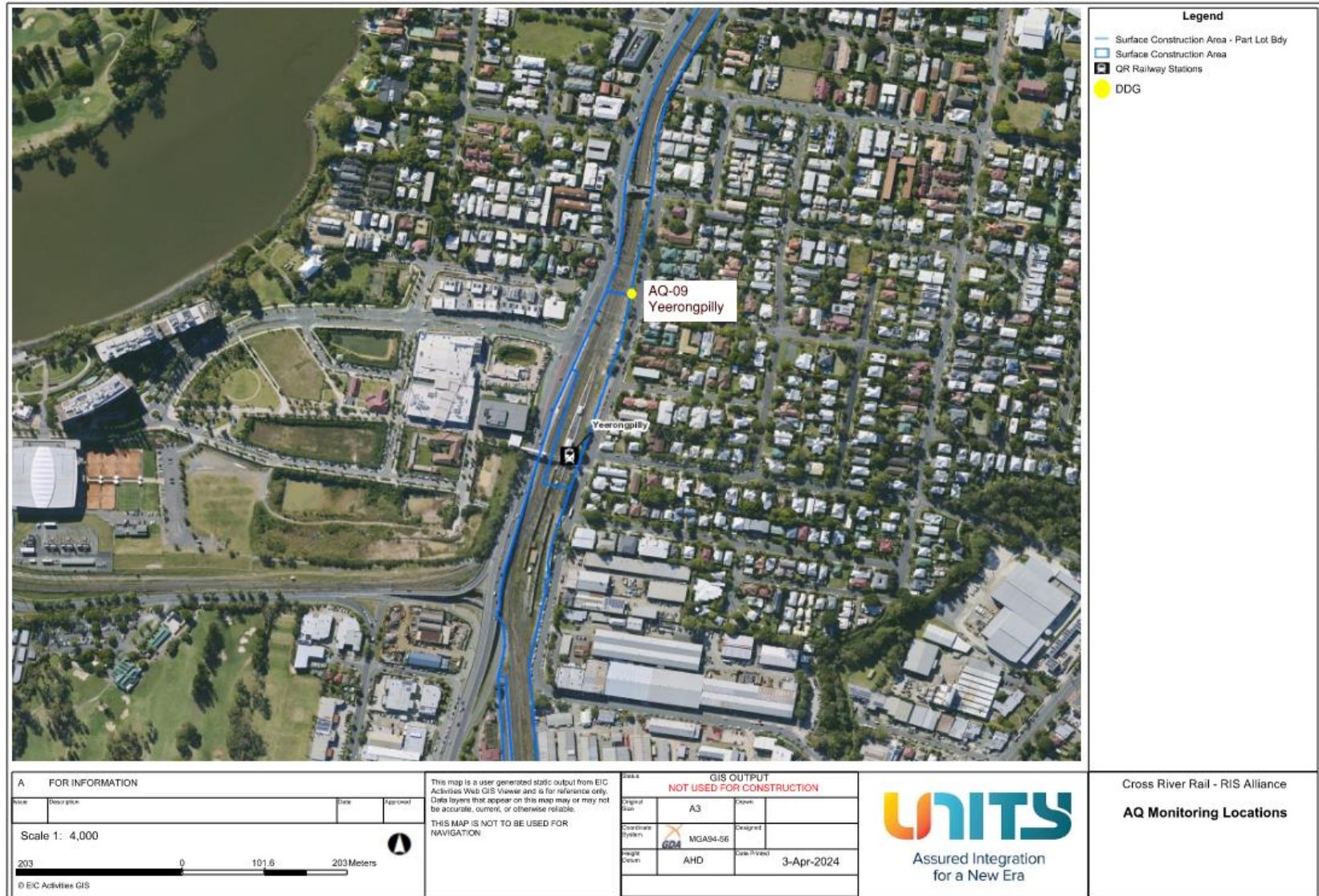


Figure 13: Yeerongpilly AQ location

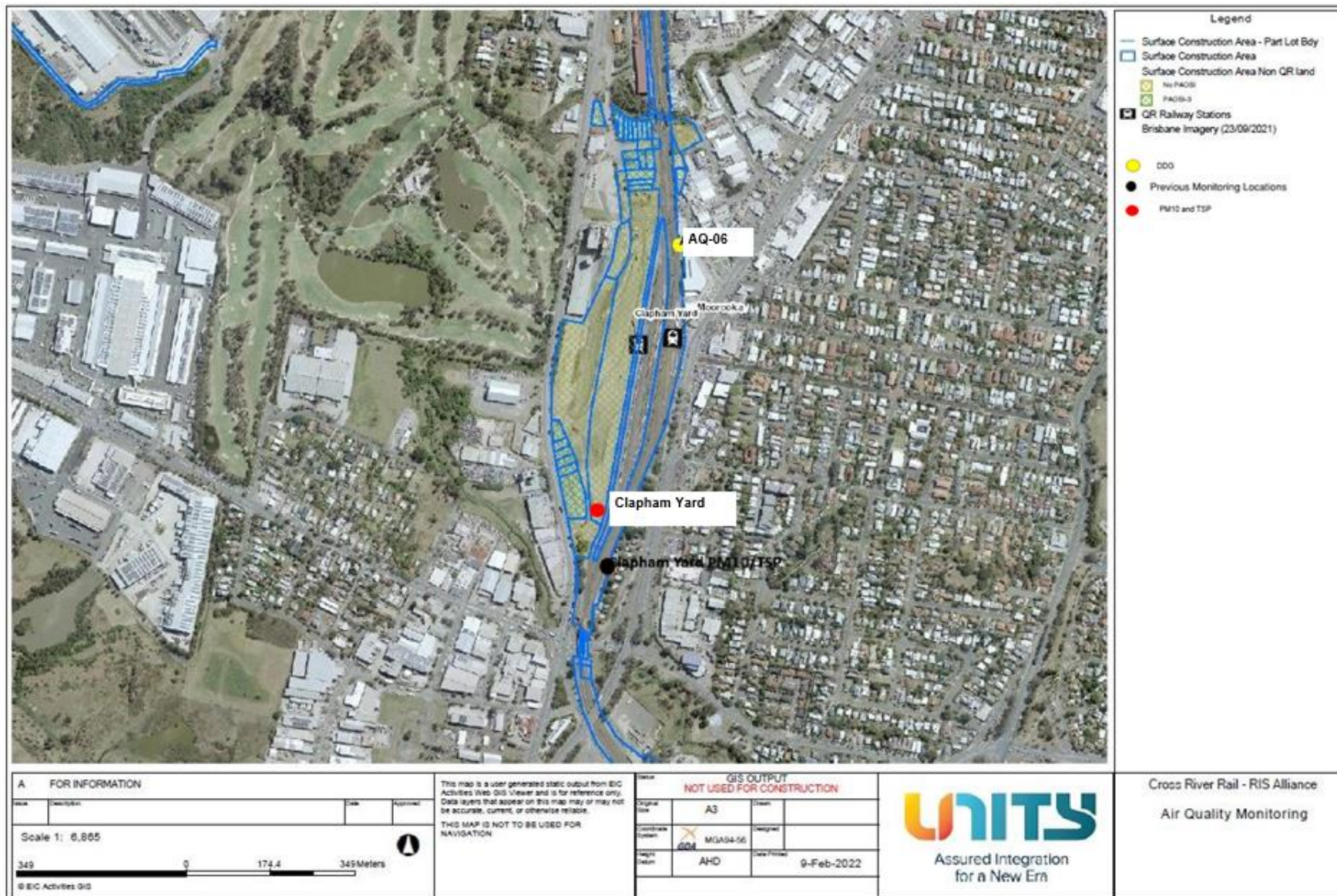


Figure 14: Clapham Yard AQ Locations

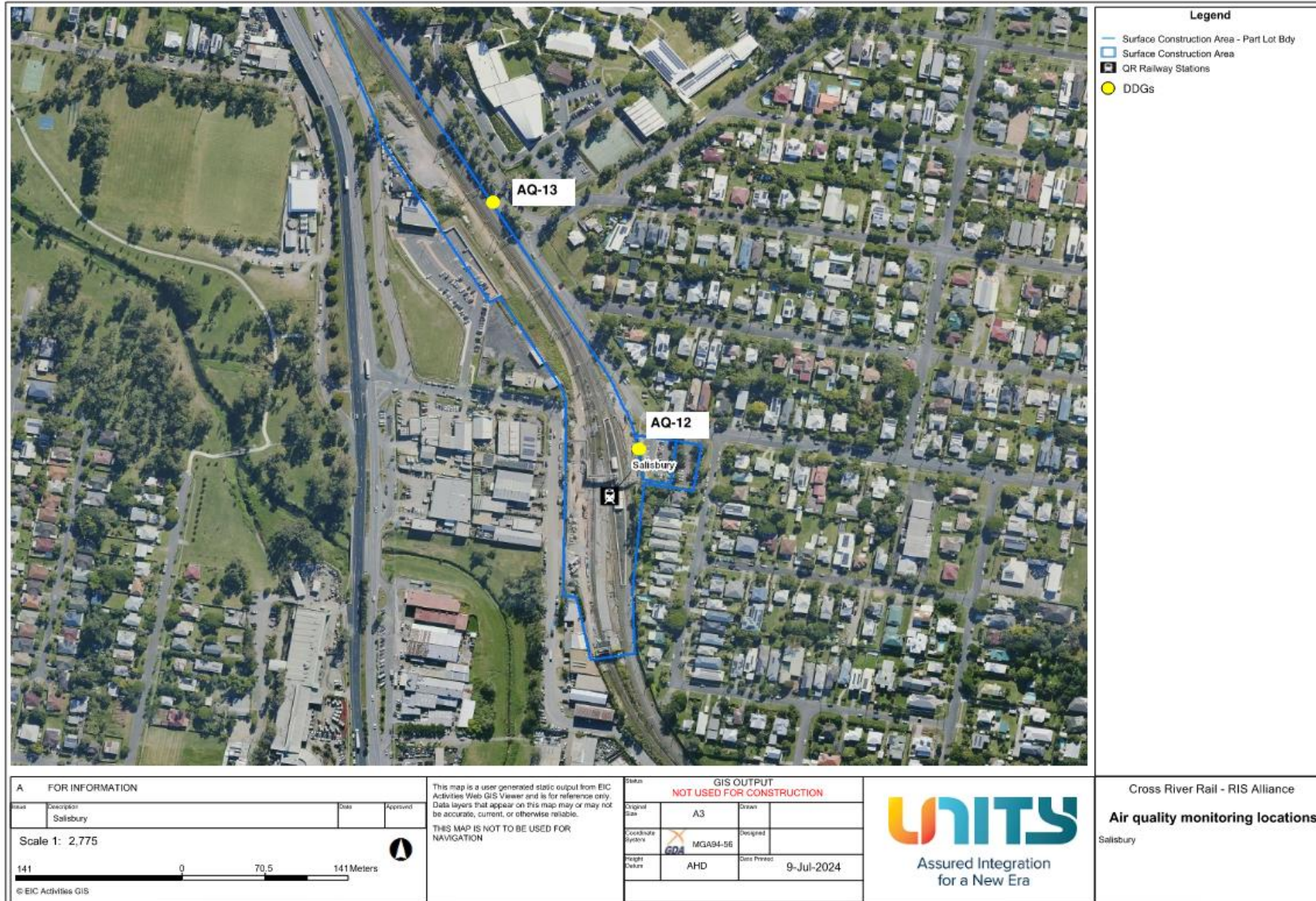


Figure 15: Salisbury AQ locations

Attachment 4 Monitoring Locations – Surface Water

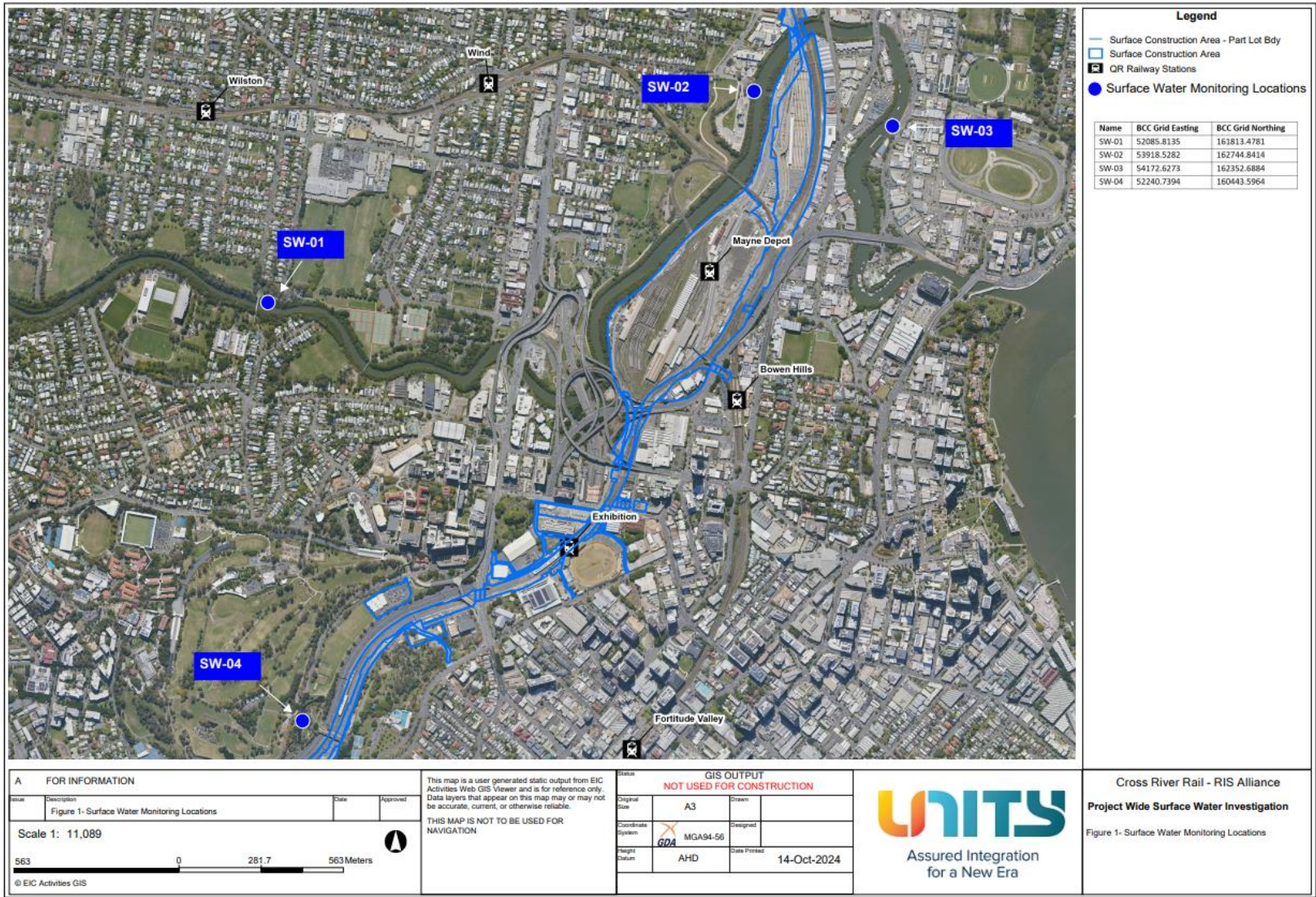


Figure 16: Northern WQ Locations

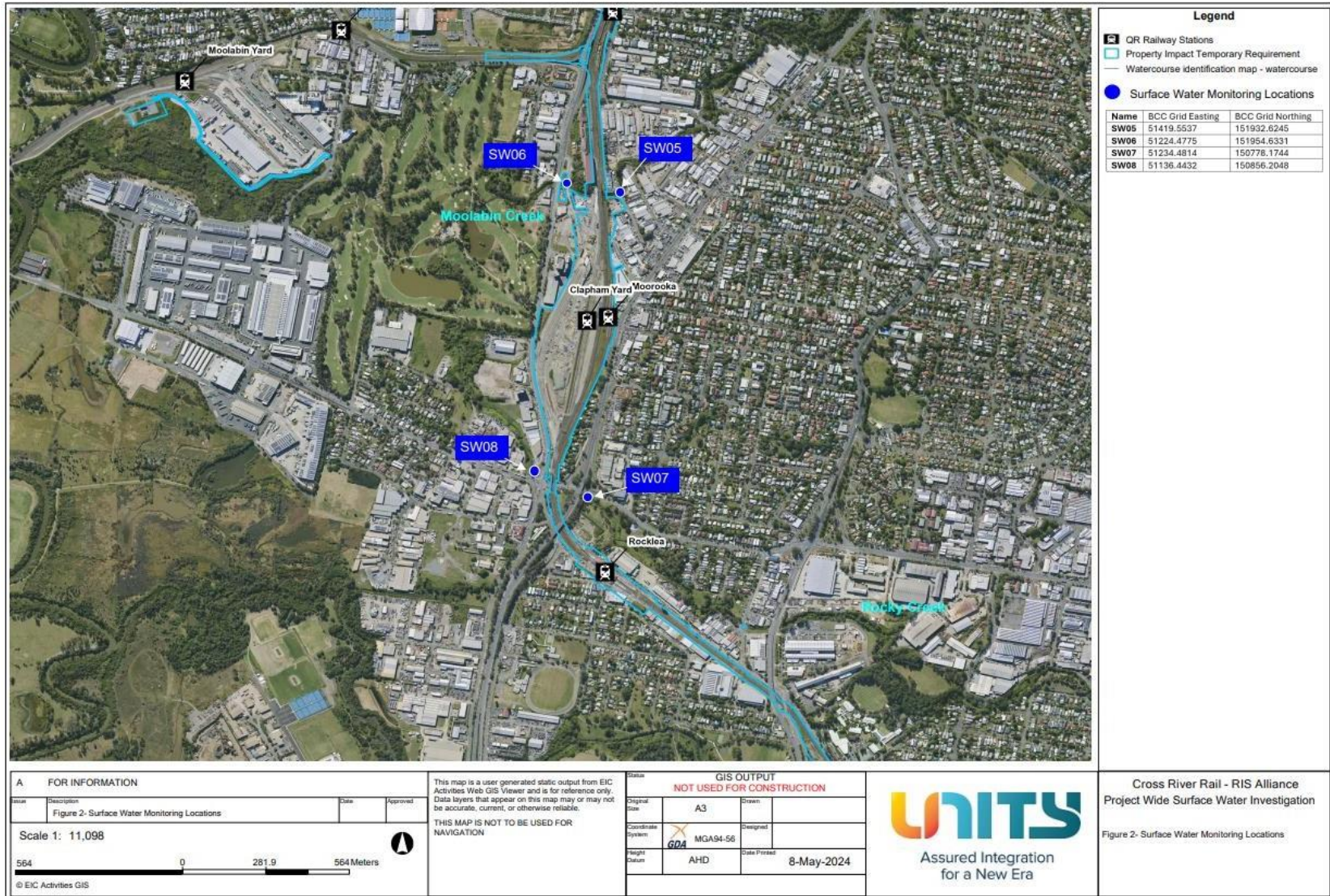


Figure 17: Southern WQ Locations

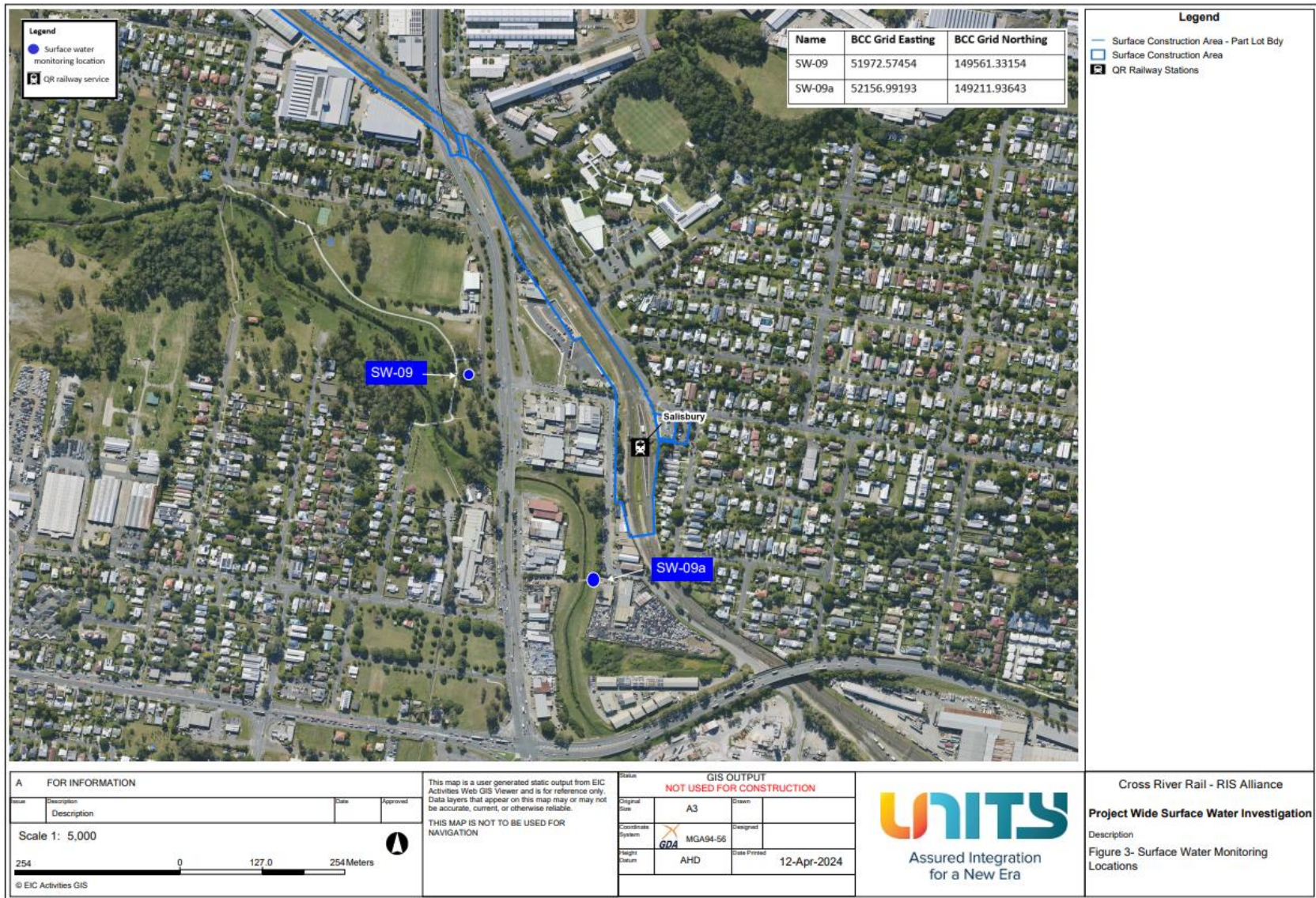


Figure 18: Southern WQ Locations

Appendix B TSD Monthly Report

This document is the property of the Cross River Rail Delivery Authority. It may not be copied or reproduced without permission.



COORDINATOR-GENERAL'S MONTHLY REPORT: APRIL 2026

Prepared in accordance with Coordinator-General Imposed Condition 6 - Reporting.

1. Monthly Monitoring Summary

It is CBGU Joint Venture's intent to aim for the Goals and Objectives relevant to vibration, noise, air quality and water monitoring within the practical extent of delivering the Project.

Vibration and noise monitoring were conducted on fifteen (15) occasions in April 2026.

Ambient air quality monitoring was conducted at Roma Street, Albert Street, Woolloongabba, Boggo Road, and the Southern Portal precinct sites in April 2026. Air quality monitoring confirmed that works adhered to Project requirements.

Water quality monitoring was conducted before the release of water from the site on three (3) occasions. Each monitoring event confirmed that the Project requirements were adhered to. One (1) round of surface water quality monitoring was conducted. The monitoring event confirmed that the Project had no impacts.

2. Coordinator-General’s Monthly Report – Compliance Assessment Against Imposed Conditions

Whilst not a requirement of Imposed Condition 6, CBGU offers the below Compliance Status Table as a goodwill gesture to demonstrate the Project’s ongoing environmental performance.

Table 1: Compliance Status – CG Imposed Conditions

CG Condition	Requirement Summary	Compliance Met (Yes/No/NA)	Comment
1.	General Conditions – compliance with the Project Changes relevant to the Contractor’s scope.	Yes	CBGU Project works have been conducted in compliance with the Imposed Conditions.
2.	Outline Environmental Management Plan – timely submission to the Coordinator-General, including required sub-plans.	N/A	The OEMP is not an obligation of the CBGU Joint Venture.
3.	Design – the achievement of the Environmental Design Requirements.	Yes	Design and implementation proceeded in accordance with the Environmental Design Requirements.
4.	Construction Environmental Management Plan – all relating to Relevant Project Works.	Yes	All CBGU works were conducted in accordance with the Construction Environmental Management Plan (CEMP) (Rev 12).
5.	Compliance and Incident Management – Non-compliance events, notifications, and reporting.	Yes	Nil non-compliances occurred during the monitoring period (refer to Section 4).
6.	Reporting – Monthly and Annual reporting.	Yes	All reporting requirements are completed in accordance with Imposed Condition 6.
7.	Environmental Monitor – engaged and functions resumed.	Yes	An Environmental Monitor (EM) is appointed to the Project, and CBGU is committed to working collaboratively to aid the EM’s functions under Imposed Condition 7.
8.	Community Relations Monitor – engaged and functions resumed.	Yes	A Community Relations Monitor (CRM) is appointed to the Project, and CBGU is committed to working collaboratively to aid the CRM’s functions under Imposed Condition 8.
9.	Community Engagement Plan – developed and endorsed by Environmental Monitor.	Yes	A Community Engagement Plan (CEP) has been developed and implemented in accordance with Imposed Condition 9. The CEMP has been endorsed with the CEP.
10.	Hours of Work – works undertaken during approved hours.	Yes	CBGU Project works have been conducted in accordance with the approved hours of work.

CG Condition	Requirement Summary	Compliance Met (Yes/No/NA)	Comment
11.	Noise – Work must aim to achieve internal noise goals for human health and well-being.	Yes	CBGU Project work has aimed to achieve internal noise goals for human health and well-being. Where internal noise levels have been unable to be measured, suitable noise reductions have been applied in accordance with Imposed Condition 11. Noise monitoring data is provided within Section 3.2.
	Vibration – Works must aim to achieve vibration goals for cosmetic damage, human comfort and sensitive building contents.	Yes	CBGU Project work has aimed to achieve vibration goals for cosmetic damage, human comfort and sensitive buildings. Vibration monitoring data is provided within Section 3.1.
12.	Property Damage relating to ground movement	Yes	The management of potential impacts relating to property damage has been completed in accordance with Imposed Condition 12.
13.	Air Quality – Works must aim to achieve air quality goals for human health and nuisance.	Yes	CBGU Project works have aimed to achieve air quality goals. Air quality monitoring data is provided within Section 3.
14.	Traffic and Transport – Works must minimise adverse impacts on road safety and traffic flow.	Yes	CBGU Project works have been conducted in a manner that has minimised adverse impacts on road safety and traffic flow.
15.	Water Quality – Works must not discharge surface water and groundwater from the construction site above the relevant environmental values and water quality objectives.	Yes	CBGU has prepared and managed processes to ensure water quality is managed in accordance with Imposed Condition 15.
16.	Water Resources – evaluate potential impact, plan works, implement controls and monitor the inflow of groundwater associated with drawdown.	Yes	CBGU Project works are managed in accordance with Imposed Condition 16.
17.	Surface Water – Must be designed to avoid inundation from stormwater due to a 2-year (6hr) ARI rainfall event and flood waters due to a 5-year ARI rainfall event and constructed to avoid afflux or cause the redirection of uncontrolled surface water flows, including stormwater flows, outside of worksites.	Yes	Design of the CBGU Project works considers the requirements of Imposed Condition 17.
18.	Erosion and Sediment Control – Provisions for erosion and sediment control must be consistent with the Guidelines for Best Practice Erosion and Sediment Control (International Erosion Control Association, 2008) and the Department of Transport and Main Roads' Technical	Yes	CBGU has prepared and managed processes to ensure erosion & sediment control is managed in accordance with Imposed Condition 18.

	Standard MRTS52.		
19.	Acid Sulfate Soils managed as per the <i>Queensland Acid Sulfate Soil Technical Manual</i> .	Yes	CBGU has prepared and managed processes to ensure acid sulfate soils are managed in accordance with Imposed Condition 19.
20.	Landscape and Open Space – general requirement to minimise impacts on landscapes and open space values and specific requirements around Victoria Park	Yes	CBGU Project works are designed and implemented in accordance with Condition 20.
21.	Worksite Rehabilitation – worksites rehabilitated as soon as practicable upon completion of works or commissioning, and in consultation with Brisbane City Council.	Yes	CBGU Project works are designed and implemented in accordance with Condition 21.
22.	Flood Water – Temporary emission to allow the release of Flood Waters to high flow receiving waters.	Yes	CBGU Project works have been conducted in accordance with the provisions available to manage floodwaters.

3. Environmental Monitoring Results

Monitoring data is provided below in accordance with Imposed Condition 6(b)(i).

3.1 Vibration

Vibration requirements (levels) are defined as goals within Imposed Condition 11. The goals are to be aimed for.

The Coordinator-General's Change Reports acknowledges instances where these goals may not be achieved.

Vibration monitoring was conducted on five (5) occasions during April 2026.

Table 2: Vibration Monitoring Data

No.	Start Date	Time (AM/PM)	Finish Date	Location	Average Vibration level (mm/s)	Max Vibration Level (mm/s)	Vibration Goal (mm/s)	Receiver / Goal Type	Adhered to Project Requirements (Yes / No)
1.	11/02/2026 ¹	7:05:00 AM	18/02/2026	George Street (Roma Street Precinct)	0.09	0.45	50	Public Courts	Yes
2.	08/04/2026	1:36:00 PM	08/04/2026	Charlotte Street (Albert Street Precinct)	1.61	8.74	50	Commercial	Yes
3.	08/04/2026	2:47:00 PM	08/04/2026	Charlotte Street (Albert Street Precinct)	0.44	2.1	50	Commercial	Yes

4.	09/04/2026	1:55:00 PM	13/04/2026	Mary Street (Albert Street Precinct)	0.34	5.64	50	Commercial	Yes
5.	21/04/2026	3:43:00 PM	21/04/2026	Mary Street (Albert Street Precinct)	0.31	0.6	50	Commercial	Yes
6.	23/04/2026	1:14:00 PM	23/04/2026	Mary Street (Albert Street Precinct)	0.27	1.05	50	Commercial	Yes

1. There was a technical issue that prevented the data from being extracted. This was resolved in April and has been provided in this report.

3.2 Noise

Noise requirements (levels) are defined as goals within Imposed Condition 11. The goals are to be aimed for.

The Coordinator-General’s Change Reports acknowledge instances where these goals may not be achieved.

Noise monitoring was conducted on ten (10) occasions during April 2026.

Table 3: Noise Monitoring Data

No.	Date	Time (AM / PM)	Location (Street Name) (Construction Precinct)	Purpose of Monitoring	Internal or External ^[3] Monitoring	Activity	Dominant Noise Source	Noise Goal LA10 ^[1]	Noise level LA10	Noise Goal LAeq ^[2]	Noise level LAeq	Adhered to Project Requirements (Yes / No)
1.	9/04/2026	9:47:00 AM	Charlotte Street (Albert Street Precinct)	Model Verification	External	Demolition Lot 2	Background Noise	72	62.2	62	60.8	Yes
2.	9/04/2026	1:27:00 PM	Charlotte Street (Albert Street Precinct)	Model Verification	External	Demolition Lot 2	Demolition	72	81.4	62	77.5	Yes
3.	9/04/2026	2:07:00 PM	Charlotte Street (Albert Street Precinct)	Model Verification	External	Demolition Lot 2	Demolition	72	85.3	62	81.9	Yes
4.	9/04/2026	2:23:00 PM	Charlotte Street (Albert Street Precinct)	Model Verification	Internal	Demolition Lot 2	Demolition	55	61.3	45	61.9	Yes
5.	9/04/2026	2:50:00 PM	Charlotte Street (Albert Street Precinct)	Model Verification	External	Demolition Lot 2	Demolition	72	71.6	62	65.5	Yes
6.	10/04/2026	2:55:00 PM	Mary Street (Albert Street Precinct)	Model Verification	Internal	Demolition Lot 2	Demolition & Background Noise	55	52.6	45	49.3	Yes
7.	10/04/2026	3:18:00 PM	Mary Street (Albert Street Precinct)	Model Verification	Internal	Demolition Lot 2	Demolition & Background Noise	55	57.6	45	58.6	Yes

8.	23/04/2026	1:15:00 PM	Mary Street (Albert Street Precinct)	Construction Monitoring at Sensitive Places	Internal	Demolition Lot 2	Demolition	55	68.3	45	64.4	Yes
9.	23/04/2026	1:36:00 PM	Mary Street (Albert Street Precinct)	Construction Monitoring at Sensitive Places	Internal	Demolition Lot 2	Demolition & Background Noise	55	59	45	54.6	Yes
10.	23/04/2026	1:54:00 PM	Mary Street (Albert Street Precinct)	Construction Monitoring at Sensitive Places	Internal	Demolition Lot 2	Demolition & Background Noise	55	55.4	45	51.7	Yes

- [1] Intermittent noise goal (LA10)
- [2] Continuous noise goal (LAeq)
- [3] In accordance with Imposed Condition 11, where internal noise levels were unable to be measured, external noise goals were developed by an acoustic specialist using the following standards: ISO 140-5:1998 Acoustics – Measurement of Sound Insulation in Buildings and of Building Elements, Part 5: Field measurements of airborne sound insulation of façade elements and facades and ISO 354:1985 Acoustics – Measurement of sound absorption in a reverberation room.

3.3 Air Quality

3.3.1 Deposited Dust Results

Air quality requirements (levels) are defined as goals within Imposed Condition 13. The goals are to be aimed for. The Coordinator-General’s Change Reports acknowledges instances when these goals may not be achieved. Dust deposition monitoring was performed in April 2026. The dust deposition gauge results for the reporting period are detailed below, and all monitoring data adhered to Project requirements.

Table 4: Air Quality Monitoring – March Deposited Dust Data

Location	Project Wide Air Quality Goals ^[1]			Monitoring results (mg/m ² /day)	Comments
	Criterion	Air Quality Indicator	Goal (mg/m ² /day)		
Roma Street Precinct	Nuisance	Deposited dust	120	6.90	Air quality monitoring was performed during the reporting period. All results adhered to Project requirements.
Albert Street Precinct (South)				17.24	
Albert Street Precinct (North)				20.69	
Woolloongabba Precinct (North)				16.67	
Woolloongabba Precinct (South)				3.33	
Boggo Road Precinct (North)				12.50	
Boggo Road Precinct (South)				9.38	
Southern Portal (East)				15.63	

- [1] Project works must aim to achieve construction air quality goals. The Coordinator-General Change Report – Whole of Project Refinements 2019 acknowledges that instances exist in which these goals may not be achieved.

3.3.2 Ambient Air Quality Results

Monitoring of Total Suspended Particles (TSP) and particulate matter less than 10µm (PM10) was conducted in April 2026.

TSP and PM10 are monitored using portable air quality units and nearby Government air quality stations. Targeted monitoring of potential dust-generating activities is conducted by the mobile air quality units and was completed at Woolloongabba, Albert Street and Boggo Road Precincts in April 2026. Three (3) Government air quality stations near the Construction Precincts are also utilised.

Table 5: Targeted Air Quality Monitoring – Total Suspended Particles and PM10 Data

Date	TSP	PM10	Woolloongabba		Albert Street		Boggo Road	
	Project Goal ^[1]	Project Goal ^[1]	TSP	PM 10	TSP	PM 10	TSP	PM 10
	(µg/m ³ /24 hr)							
01-April-26	80	50	2.54	2.53	4.78	4.78	4.49	4.43
02- April -26	80	50	6.81	6.78	4.63	4.62	5.15	5.08
03- April -26	80	50	8.00	7.94	4.21	4.20	4.94	4.89
04- April -26	80	50	3.79	3.77	4.34	4.34	3.19	3.15
05- April -26	80	50	4.09	4.06	3.94	3.92	3.17	3.12
06- April -26	80	50	6.49	6.48	4.75	4.72	5.50	5.45
07- April -26	80	50	6.16	6.15	4.05	4.03	5.00	4.96
08- April -26	80	50	7.91	7.89	5.83	5.80	6.69	6.63
09- April -26	80	50	9.93	9.91	6.98	6.97	10.40	10.16
10- April -26	80	50	6.75	6.74	5.05	5.04	6.05	6.00
11- April -26	80	50	9.20	9.19	7.61	7.60	7.93	7.87
12- April -26	80	50	9.06	9.03	7.82	7.80	8.50	8.44
13- April -26	80	50	10.52	10.46	7.17	7.05	7.92	7.70
14- April -26	80	50	9.69	9.65	7.28	7.20	8.07	7.89
15- April -26	80	50	13.07	13.04	12.76	11.91	12.53	12.43
16- April -26	80	50	11.31	11.29	8.61	8.26	11.88	11.79
17- April -26	80	50	24.65	24.62	16.99	16.95	24.10	24.01
18- April -26	80	50	22.43	22.40	23.83	23.79	22.61	22.48

Date	TSP Project Goal ^[1]	PM10 Project Goal	Woolloongabba		Albert		Boggo Road	
			TSP	PM 10	TSP	PM 10	TSP	PM 10
			(µg/m ³ /24 hr)					
19- April -26	80	50	14.41	14.38	10.36	10.31	13.27	13.21
20- April -26	80	50	12.41	12.38	8.01	7.91	12.67	12.53
21- April -26	80	50	9.22	9.19	7.08	6.94	8.64	8.55
22- April -26	80	50	9.48	9.36	8.62	8.54	9.00	8.90
23- April -26	80	50	6.33	6.17	4.15	4.09	4.95	4.86
24- April -26	80	50	4.81	4.69	4.07	4.00	5.25	5.13
25- April -26	80	50	-[2]	-[2]	-[2]	-[2]	-[2]	-[2]
26- April -26	80	50	8.82	8.76	4.52	4.44	5.57	5.53
27- April -26	80	50	4.59	4.54	4.92	4.90	4.34	4.29
28- April -26	80	50	5.14	5.07	-[3]	-[3]	4.85	4.76
29- April -26	80	50	6.75	6.71	5.25	5.24	6.14	6.05
30- April -26	80	50	5.20	5.16	4.14	4.13	4.43	4.38

- [1] Project works must aim to achieve construction air quality goals. The Coordinator-General Change Report – Whole of Project Refinements 2019 acknowledges instances where these goals may not be achieved.
- [2] On the 25th of April of 2026, the unit's manufacturer online dashboard was offline due to maintenance. This resulted in no data being able to be reported. During the outage period, data from the nearby Brisbane CBD, South Brisbane and Woolloongabba DETSI Air Quality Stations confirmed that air quality remained compliant.
- [3] The Albert Street air quality unit experienced technical difficulties on the 28th of April of 2026. The unit was inspected as soon as practicable and dispatched to the manufacturer for repairs. A rental unit was deployed to maintain monitoring capability. During the outage period, data from the nearby Brisbane CBD DETSI Air Quality Station confirmed that air quality remained compliant.

CBGU also utilise three (3) Government air quality monitoring stations to monitor PM10 near the Project sites. The results during this reporting period were as follows:

- Brisbane CBD: PM10 daily maximum average: **49.7 µg/m³/24 hr** ([Chart air quality data | Environment, land and water | Queensland Government](#)) -
- South Brisbane: PM10 daily maximum average: **161.7 µg/m³/24 hr** ([Chart air quality data | Environment, land and water | Queensland Government](#)) -
- Woolloongabba: PM10 daily maximum average: **52.2 µg/m³/24 hr** ([Chart air quality data | Environment, land and water | Queensland Government](#)) -

The graphical representation of the Government air quality data is presented in the charts below (refer to Figures 1-3).

Particle PM₁₀ at Brisbane CBD, 1–30 April 2026 [about Particle PM₁₀](#)

[Brisbane CBD station overview](#)

The guideline for Particle PM₁₀ is 100µg/m³ (1hr avg) and 50µg/m³ (24hr avg).

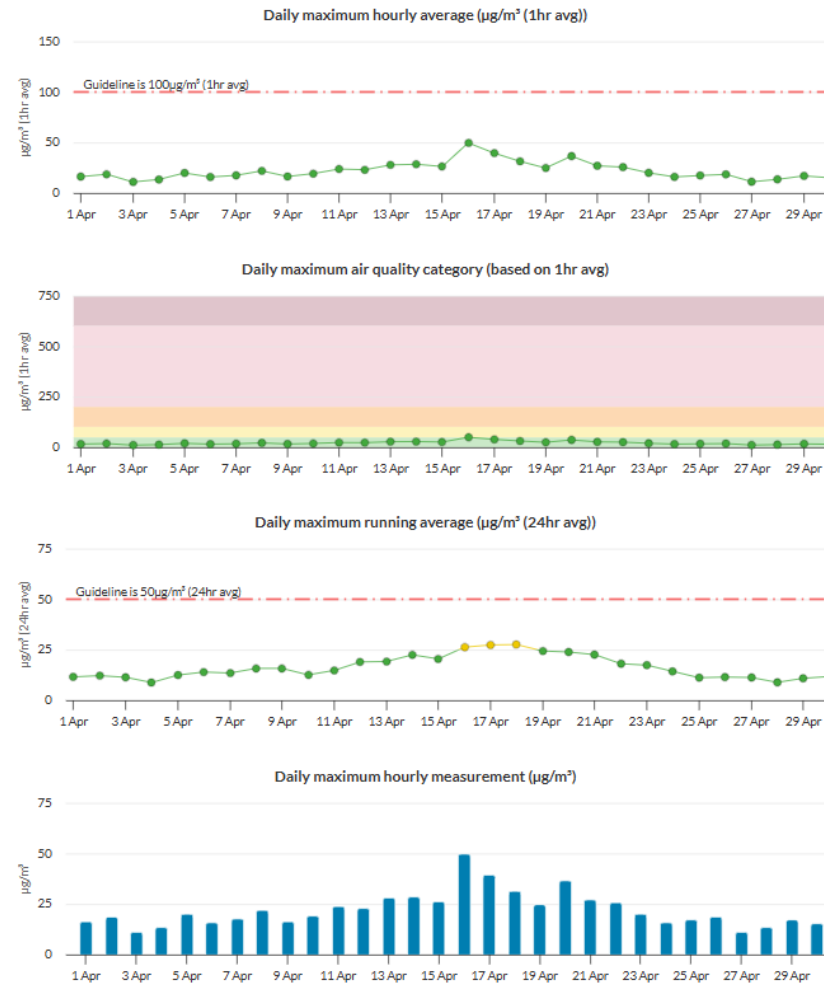


Figure 1: Brisbane CBD – DETSI Station - PM10 graph for April 2026 (reproduction from the DETSI website).

Particle PM₁₀ at South Brisbane, 1–30 April 2026 [about Particle PM₁₀](#)

[South Brisbane station overview](#)

The guideline for Particle PM₁₀ is 100µg/m³ (1hr avg) and 50µg/m³ (24hr avg).

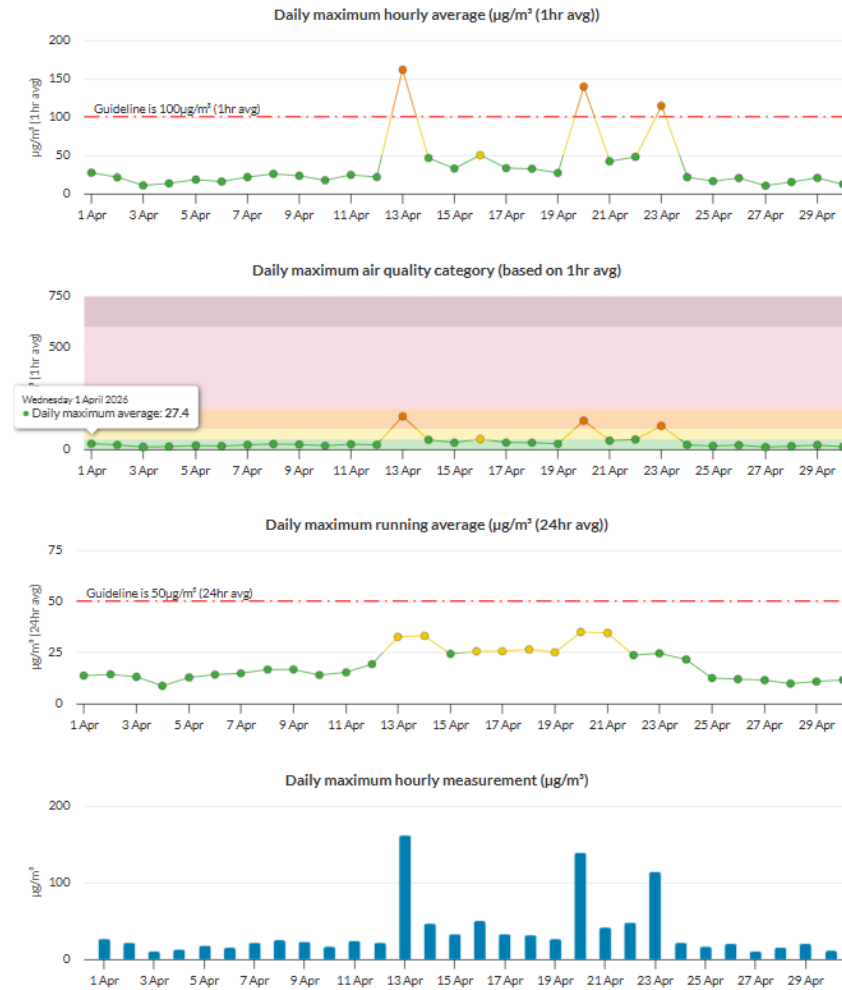


Figure 2: South Brisbane – DETSI Station - PM10 graph for April 2026 (reproduction from the DETSI website).

Particle PM₁₀ at Woolloongabba, 1–30 April 2026 [about Particle PM₁₀](#)

[Woolloongabba station overview](#)

The guideline for Particle PM₁₀ is 100µg/m³ (1hr avg) and 50µg/m³ (24hr avg).

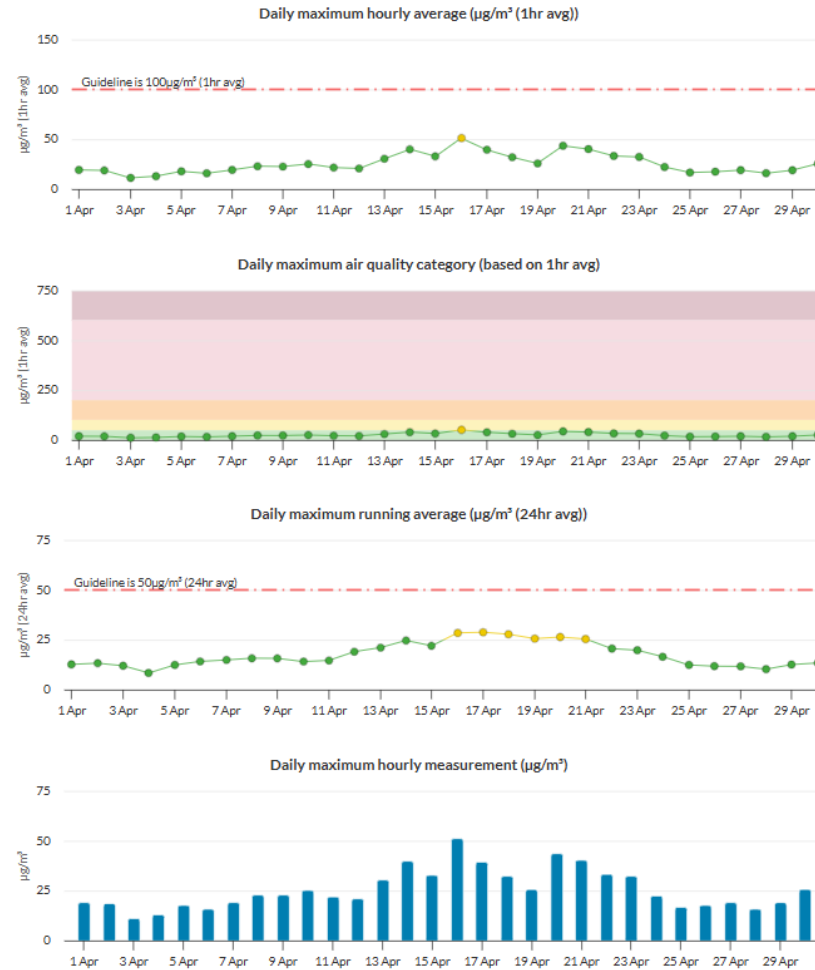


Figure 3: Woolloongabba – DETSI Station - PM10 graph for April 2026 (reproduction from the DETSI website).

3.4 Water Quality – Discharge

No water quality monitoring events (groundwater or surface water) were undertaken by CBGU during April 2026 prior to the release from the site, as monitoring was not required.

3.4.1 Groundwater Discharge

Water quality monitoring data is provided in the table below.

Table 6: Groundwater Discharge – Water Quality Monitoring Data

Location	Date	Testing of Water Quality Objectives ^[1]										Adhered to Project Requirements (Yes / No)
		pH	Suspended solids (mg/L)	Turbidity (NTU)	Ammonia N (µg/L)	Oxidised N (µg/L)	Organic N (µg/L)	Total nitrogen (µg/L)	Total phosphorus (µg/L)	Filterable Reactive phosphorus (µg/L)	Chlorophyll a (µg/L)	
Nil												

- [1] The Project's discharge procedure minimises environmental impact and aims to achieve the water quality objectives. Water quality objectives are defined as goals within the Brisbane River estuary environmental values and water quality objectives document.
- Note: Field testing (turbidity and pH) is conducted regularly during ongoing discharge.

3.4.2 Poned/Surface Water Discharge

Discharged ponded/Surface water quality monitoring data is provided in the table below.

Table 7: Surface Water Discharge - Water Quality Monitoring Data

No.	Location	Date	Testing of Water Quality Objectives ^[1]		Adhered to Project Requirements (Yes / No)
			pH	Turbidity (NTU)	
1.	Roma Street Precinct	30/03/2026	7.35	12.19	Yes
2.	Roma Street Precinct	13/04/2026	7.43	2.49	Yes
3.	Roma Street Precinct	22/04/2026	7.55	9.85	Yes

- [1] The Project's discharge procedure is designed to minimise environmental impact and aims to achieve the water quality objectives. All discharges were compliant with Guidelines for Best Practice Erosion and Sediment Control (IECA, 2008) and the Department of Transport and Main Roads' Technical Standard MRTS 52 – Erosion and Sediment Control.

3.5 Water Quality – Surface Water

In April 2026, CBGU JV undertook one (1) round of surface water sampling at four (4) monitoring locations within the project area (upstream and downstream).

The monitoring locations' results reflect the overall condition of the broader catchment, not just the project's influence. Water discharge from the project would not have impacted the catchment, considering the results also provided in section 3.4 above.

Table 8: Offsite Upstream & Downstream Water Quality Data

Location	Upstream / Downstream	Date	Purpose of Monitoring	Turbidity (NTU)	Dissolved oxygen (%)	pH
Albert Street	Upstream	20/04/2026	Monthly	7.53	92.79	7.92
Albert Street	Downstream	20/04/2026	Monthly	7.94	90.96	7.88
Roma Street	Upstream	20/04/2026	Monthly	57	85.93	7.82
Roma Street	Downstream	20/04/2026	Monthly	18.09	86.59	7.79
Woolloongabba	Upstream	14/04/2026	Monthly	24.9	107.12	8.32
Woolloongabba	Downstream	14/04/2026	Monthly	47.7	98.6	7.93
Boggo Road	Upstream	14/04/2026	Monthly	8.18	85.74	7.84

- [1] Monitoring at the Boggo Road site occurs at a culvert outlet at the beginning of the surface catchment. There is no upstream or downstream monitoring point as such. The culvert outlet receives water released from the site and a broader stormwater catchment.

4. Non-Compliances

Details of non-compliances are provided in accordance with Imposed Condition 6(b)(ii).

A Non-Compliance Event is defined as Project works that do not comply with the Imposed Conditions. Nil non-compliances occurred during the monitoring period.

Table 9: Non-Compliance Events this monitoring period

Event Title	Location, Date, and time of the event	Date the Event was Formally Notified to CG/IEM	Conditions Affected	Date the Event Report Formally Sent to CG/IEM	Status of Event
Nil					

5. Complaints

The reporting of complaints is provided below in accordance with Imposed Condition 6(b)(iii).

During April 2026, seventeen (17) complaints were received by CBGU, as detailed in Table 10 below.

Table 10: Summary of Complaints

No.	Date	Location	Description of Issue	Responses	Status of Event
1.	1 April 2026	Albert Street (Albert Street Precinct)	Noise	A stakeholder contacted the Project regarding night works near the Albert Street worksite. CBGU confirmed that all activities were implemented in accordance with the project conditions of approval.	Closed
2.	1 April 2026	Albert Street (Albert Street Precinct)	Noise	A stakeholder contacted the Project regarding night works near the Albert Street worksite. CBGU confirmed that all activities were implemented in accordance with the project conditions of approval.	Closed
3.	8 April 2026	Albert Street (Albert Street Precinct)	Air Quality	A stakeholder contacted the Project regarding dust management in the Albert Street worksite. CBGU confirmed that all activities were implemented in accordance with the project conditions of approval.	Closed
4.	10 April 2026	Albert Street (Albert Street Precinct)	Noise	A stakeholder contacted the Project regarding noise in the Albert Street worksite. CBGU confirmed that all activities were implemented in accordance with the project conditions of approval.	Closed
5.	11 April 2026	Albert Street (Albert Street Precinct)	Noise	A stakeholder contacted the Project regarding noise in the Albert Street worksite. CBGU confirmed that all activities were implemented in accordance with the project conditions of approval.	Closed
6.	12 April 2026	Albert Street (Albert Street Precinct)	Traffic Management/ Workforce Behaviour	A stakeholder contacted the Project regarding workforce behaviour and traffic management near the Albert Street worksite. CBGU investigated the event and reminded all personnel of appropriate Project behaviour.	Closed

7.	13 April 2026	Albert Street (Albert Street Precinct)	Odour	A stakeholder contacted the Project regarding odour generated near the Albert Street worksite. CBGU provided update on additional controls deployed in the area. CBGU also noted odour source would in place for an additional three months. Stakeholder was pleased with additional measures implemented	Closed
8.	13 April 2026	Albert Street (Albert Street Precinct)	Noise	A stakeholder contacted the Project regarding noise in the Albert Street worksite. CBGU confirmed that all activities were implemented in accordance with the project conditions of approval.	Closed
9.	14 April 2026	Albert Street (Albert Street Precinct)	Air Quality	A stakeholder contacted the Project regarding dust management in the Albert Street worksite and requesting compensation. CBGU confirmed that all activities were implemented in accordance with the project conditions of approval and the request for compensation would be considered after conclusion of works.	Closed
10.	15 April 2026	Albert Street (Albert Street Precinct)	Noise	A stakeholder contacted the Project regarding noise in the Albert Street worksite. CBGU confirmed that all activities were implemented in accordance with the project conditions of approval.	Closed
11.	22 April 2026	Unknown	Noise (Not related to project works)	A stakeholder contacted the Project regarding noise during out of hours works. CBGU investigated and confirmed it was not related to project works.	Closed
12.	22 April 2026	Albert Street (Albert Street Precinct)	Noise	A stakeholder contacted the Project regarding noise in the Albert Street worksite. CBGU confirmed that all activities were implemented in accordance with the project conditions of approval.	Closed
13.	22 April 2026	Albert Street (Albert Street Precinct)	Noise	A stakeholder contacted the Project regarding noise in the Albert Street worksite. CBGU confirmed that all activities were implemented in accordance with the project conditions of approval.	Closed

14.	27 April 2026	Albert Street (Albert Street Precinct)	Traffic Management	A stakeholder contacted the Project regarding pedestrian management near the Albert Street worksite. CBGU confirmed that traffic management was implemented in accordance with BCC requirements and offered to instal further signage in the vicinity.	Closed
15.	28 April 2026	Roma Street (Roma Street Precinct)	Noise	A stakeholder contacted the Project regarding noise in the Roma Street worksite. CBGU confirmed that all activities were implemented in accordance with the project conditions of approval.	Closed
16.	30 April 2026	Boggo Road (Boggo Road Precinct)	Vibration	A stakeholder contacted the Project regarding potential vibration impacts on sensitive equipment near the Boggo Road worksite ahead of the commencement of the activity. CBGU confirmed the activity will be conducted in accordance with the project conditions of approval.	Closed
17.	30 April 2026	Boggo Road (Boggo Road Precinct)	Traffic Management/ Workforce Behaviour	A stakeholder contacted the Project regarding workforce behaviour and traffic management near the Boggo Road worksite. CBGU is currently investigating the event	Open