



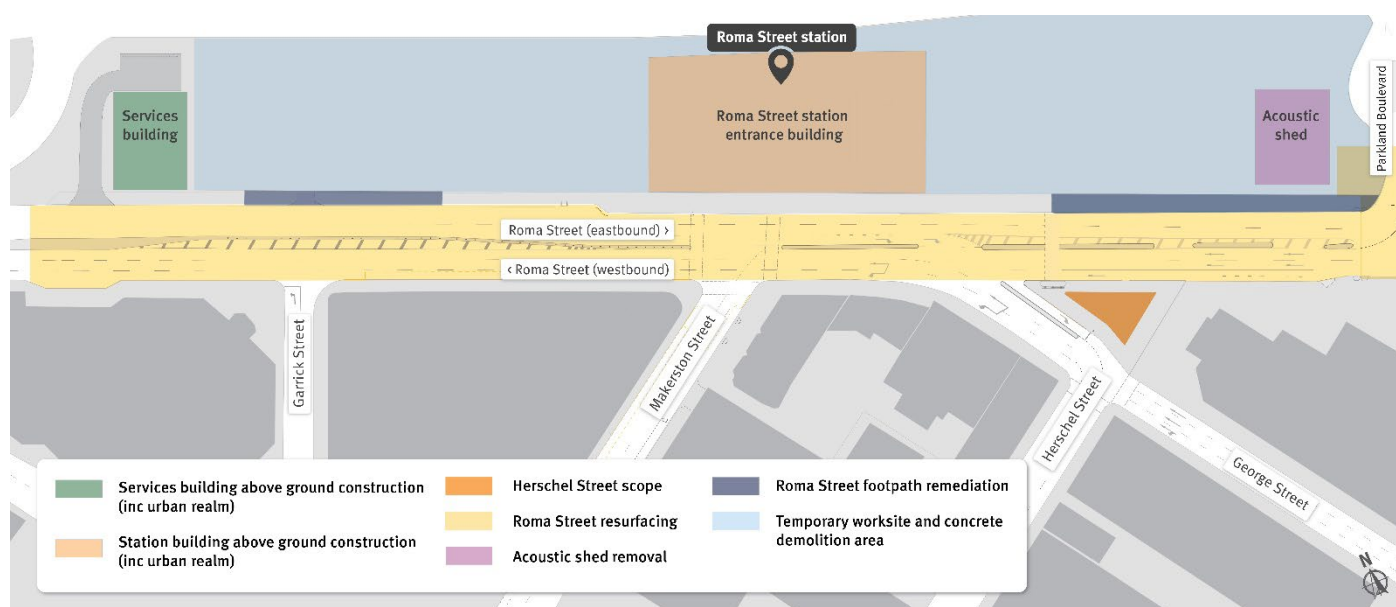
Works Notice

June and July 2026

Roma Street station construction update

Underground at Roma Street station, fit-out, mechanical and electrical works are progressing with the mezzanine and platform levels showcasing completed tiling, tactiles, wayfinding signage, speaker systems and back-of-house areas. Testing of these areas is now underway.

Works across the Roma Street precinct are progressing with road resurfacing and footpath reconstruction. Inside the worksite, the removal of temporary concrete slabs previously required as part of site office facilities will commence.



Above: Roma Street station works overview throughout June and July 2026.

Roma Street road resurfacing

From mid-2026, parts of Roma Street will be resurfaced. These works will be carried out in stages to minimise impacts to road users, pedestrians, and public transport and maintain local access. Due to traffic permitting requirements, the majority of road resurfacing will be undertaken outside of normal construction hours.

Further notification will be issued ahead of these works to ensure local residents and road users are kept informed.

Additional work to modify footpaths, traffic lights, service infrastructure, cycle infrastructure, and landscaping in the Roma Street precinct will continue until mid-2026. Some of these activities may also need to occur out-of-hours due to traffic permit requirements.

For more information, you can view the Roma Street station [design fact sheet here](#).



Above: Roma Street road to be resurfaced in mid-2026.

Main station entrance building and existing station

Roma Street - Opposite Makerston Street

- Day and night work**
- Oversized deliveries to and from site and via the busway. Deliveries may occur at night.
 - Installation and fit-out of external station elements.
 - Adjustments to hoarding and scaffolding using hand tools and steel fixing.
 - Intermittent short-term pedestrian stoppages, partial lane closures, footpath diversions, and adjustments to pedestrian gantries along Roma Street.
 - Removal of concrete slabs within the worksite which may include, but not be limited to, the use of concrete saws, jackhammers, excavators, grinders and hand tools.
 - Installation of steel, roof sheeting, guttering and fit-out activities to construct the station entrance.

Services building

Roma Street - Opposite Garrick Street

- Day and night work**
- Oversized deliveries to and from site and via the busway. Deliveries may occur at night and may require lane closures.
 - Testing and commissioning services including tunnel ventilation systems, communication and control systems and energisation of services.
 - Construction of driveway and service utility connections involving concreting activities, installation of scaffold, drainage, and use of vacuum trucks.
 - Heavy plant movements including the use of cranes and oversized deliveries to site. Some short-term pedestrian stoppages, lane closures and footpath diversions may be required.
 - Removal of concrete slabs within the worksite which may include, but not limited to concrete saws, jackhammers, excavators, grinders and hand tools.
 - Service investigations and installation of a sewer line and utilities on Roma Street.

Surrounding streets and footpaths

Roma, Herschel, Makerston and George streets

- Day and night work**
- Installation of permanent underground stormwater and sewer infrastructure including drainage pipes, manholes and gully pits along Roma Street.
 - Temporary road works including footpath upgrade works, road upgrade works, road and footpath pavement removal, public lighting installation, and traffic changes. Intermittent short-term lane and footpath closures will be required with detours and traffic control in place.
 - Installation of permanent tiling and roofing of canopy structure, and some site crib demobilisation.
 - Temporary pedestrian detours will be in place for access to and from Roma Street station platform 1.
 - Continued service investigations and installation of sewer lines, stormwater lines and utilities on Roma Street both at the main station and western services building.

Acoustic shed and underground cavern

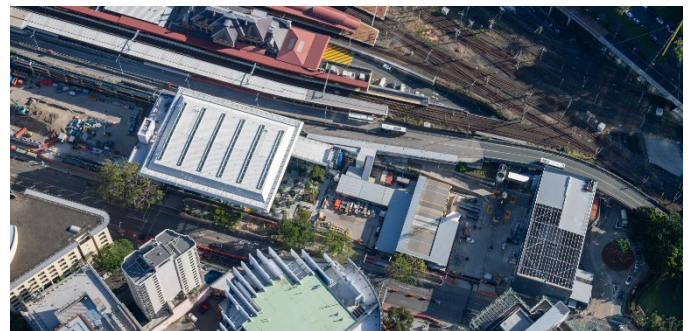
Acoustic shed, corner of Roma Street and Parkland Boulevard

- Day and night work**
- Fit-out of mechanical and electrical services, architectural panelling, ceiling materials and tiling.
 - Commissioning and energisation of tunnel ventilation systems, communication and control systems.
 - Removal of the acoustic shed frame and concrete slab at the corner of Roma Street and Parkland Boulevard.

Acoustic shed and site office slab concrete removal

From mid-2026, major concrete removal works will be required across the station precinct which may include, but not be limited to, the use of concrete saws, jackhammers, excavators, grinders and hand tools.

Further notification will be issued ahead of these works to ensure local residents and road users are kept informed.



Above: Concrete to be removed from Roma Street station

What to expect:

Roma Street station construction hours are 24 hours Monday to Friday and 6:30am to 6:30pm on Saturdays, unless otherwise advised. Some activities may be required to take place outside of these hours.

During construction, you may notice:

- Increased levels of noise, dust, and vibration
- Construction vehicles travelling to and from the worksite via Roma Street
- Delivery of materials and equipment to the worksite including at night
- Temporary traffic and pedestrian changes on Roma Street and surrounding streets.



1800 010 875



crossriverrail@cbgujv.com.au



crossriverrail.qld.gov.au



If you need an interpreter to assist you in understanding this document, please call the Translating and Interpreting Service (TIS National) on 131 450 and request to be transferred to Multicultural Affairs Queensland on 13 QGOV (13 74 68)

CROSSRIVERRAIL
DELIVERY AUTHORITY



Queensland
Government