

Work Notice

June & July 2026

Albert Street station construction update

The main station entrance (Lot 1) continues to take shape, with metal façade cladding and architectural louvres being installed along the canopy and the sides of the station building.

At the former acoustic shed site (Lot 2) concrete removal works are complete, with some final earthworks ongoing.

At the northern station entrance (Lot 3), station fit-out activities are continuing, with crews focusing on the entrance level architectural façade and installation of flood barriers.

The Green Spine urban realm works are progressing well, with the northern section between Elizabeth and Charlotte streets tracking towards completion. Construction of the Green Spine between Charlotte and Mary streets is also ongoing.

Concrete slab removal – Lot 1 station canopy

From late May through to mid-July, work to remove the temporary concrete slab from under the Lot 1 station canopy will occur. The removal of the slab is required to enable the Albert Street Green Spine works to progress in front of the station. These works will include:

- Removal of the concrete slab and foundations, primarily through the use of saw cutting.
- Breaking up cut concrete and loading onto trucks with excavators before removing from site.
- Jackhammering may be used at times during both the cutting and removal of the concrete.
- Truck movements throughout the day and night to remove materials from the worksite.

Work will occur seven days per week. The majority of the demolition work will be undertaken between 7:00am and 10:00pm, however some activities may occur throughout the night until 6:30am.

[Read more about these works here.](#)

Lot 1 – Main station entrance (corner of Mary and Albert streets)



- Heavy plant movements (day and night) including cranes, transport and delivery of materials, equipment and machinery.
- Station building fit-out including, but not limited to, façade cladding, glazing, roofing, architectural louvres and aluminium wall installation.
- Mechanical and electrical works including cabling, switchboard installation, heating, ventilation, air conditioning, fire life safety systems and escalator fit-out.
- Scaffold installation and removal.
- Site facilities adjustments and pedestrian gantry changes. Pedestrian detours and short-term holds are required.
- Removal of the tower crane, including a full road closure of Mary Street and the pedestrian gantry along Albert Street.
- Concrete slab removal including the use of saw cutters, jack hammers and large mobile equipment (as noted above).
- Testing and commissioning of systems such as heating, ventilation, air conditioning, lighting and electrical systems.

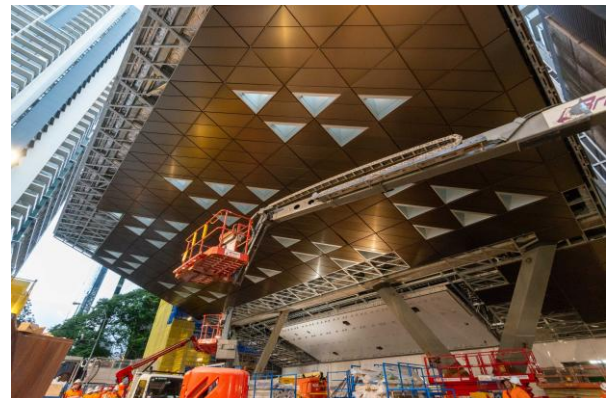


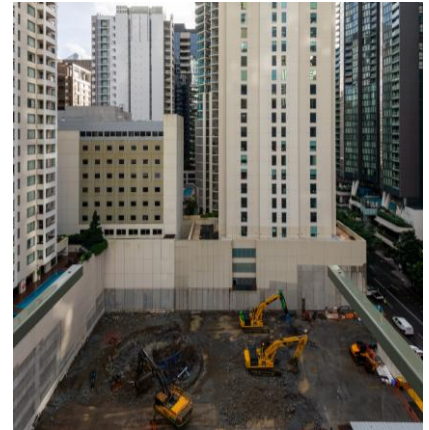
Image right: Main station entrance canopy cladding and glazing installation

Lot 2 – Former acoustic shed and underground cavern



- Large earthmoving equipment to finalise earthworks as part of site remediation.
- Installation of drainage infrastructure and permanent hoarding around the site.
- The electrical yard in the southern corner will remain until late 2026.

Image right: Concrete removal and earthworks to finalise Lot 2 site remediation



Lot 3 – Northern station entrance (142 Albert Street)



- Station canopy and building fit-out including architectural panelling and cladding, tiling and flood barrier installation.
- Mechanical and electrical services installation including passenger lifts, ceiling framing, cabling, lighting and wi-fi receivers.
- Footpath in front of site closed and ongoing temporary footpath detours.
- Stop-and-go arrangements as required for overhead lifts, deliveries, plant demobilisation, facade, canopy and roof works.
- Installation of site hoarding.

Image right: Lot 3 northern station entrance façade



Local streets – Albert, Elizabeth, Charlotte and Mary streets

Utility investigations, testing, maintenance and installation of new services and connections.

Manhole relining and sewer maintenance.

Installation of street furniture, lighting, signage, traffic signals and planting.

Green Spine construction includes mobilising and demobilising heavy plant and equipment.

Road resurfacing and line marking on Elizabeth and Charlotte streets.

Installing, maintaining and removing monitoring equipment.

Asphalt and concrete excavation, pavement construction and installation of new paving and concrete, day and night.

Gantry and facilities adjustments. Closure of Albert Street pedestrian gantry and short-term stop and holds may be required.

Ongoing intermittent lane closures and pedestrian changes on Elizabeth, Charlotte, Mary and Albert streets.

Full night-time closures of Mary Street for up to two weeks to accommodate sewer manhole works.

What to expect

There will be an increase in workforce and vehicles at the Albert Street sites for the transport of materials, equipment and machinery.

Nearby residents and businesses may experience an increase in dust, noise and vibration.

For your safety, intermittent pedestrian and traffic holds and diversions will be in place near the worksites during concrete pours and other deliveries to the sites. Please follow directions of traffic controllers.

Construction hours



Standard construction: 6:30am – 6:30pm
Monday to Saturday.



Out of hours: 6:30pm – 6:30am
Some activities will be completed out of normal construction hours due to traffic permitting and safety requirements and construction methodology.



Underground and support activities
24 hours a day, 7 days per week.



1800 010 875



crossriverrail@cbgujv.com.au



crossriverrail.qld.gov.au



If you need an interpreter to assist you in understanding this document, please call the Translating and Interpreting Service (TIS National) on 131 450 and request to be transferred to Multicultural Affairs Queensland on 13 QGOV (13 74 68)

CROSSRIVERRAIL
DELIVERY AUTHORITY

 **Queensland**
Government