

Works Notice

May & June 2026

Merrimac station construction update

Fulton Hogan is continuing major construction activities within the eastern and western rail reserves and Gooding Drive. Further construction work will also continue within the rail corridor.

Throughout May and June 2026, from 7:00am to 6:00pm (Monday to Saturday) works will include:

Eastern and western rail reserves

- Drainage works including excavation, open channel construction, concrete works, culvert and pipe installations.
- Station surface and access road construction, road pavement, surface activities and construction of bus and taxi shelters, including concrete works and steel installation.
- Works on public utilities and services, including conduit trenching, electrical activities and lighting installation.
- Ongoing earthworks activities, including stockpiling of materials, excavation, heavy vehicle movements and pre-loading.
- Sewer activities including intermittent dewatering works using pumps, including out of hours activity where required.
- Landscaping and fencing installation.
- Minor vegetation clearing in accordance with all relevant approvals, with fauna spotter/catchers in attendance.

Station building, platforms and rail corridor activities

- Station building works, including concreting and steel works, plumbing and electrical activities, roofing installations and concrete pouring during out of hours, as required.
- Lift shaft and service works, including steel and cladding installation, waterproofing and glazing works.
- Station platform works, including ongoing concreting, steel installation and platform canopy roofing works.
- Pedestrian overpass installation and electrical overhead connection finalisation.
- Installation of on-track and trackside signalling equipment.

Rail corridor works, including night works, are planned to occur outside normal working hours during scheduled track closures (construction and weather permitting). Rail corridor activities, as listed above, will be completed during day and night shifts (24 hours) on the following dates:

- **From 6:00am Saturday 20 June 2026 to 6:00pm Sunday 21 June 2026**



1800 010 875



merrimacstation@fultonhogan.com.au



crossriverrail.qld.gov.au



If you need an interpreter to assist you in understanding this document, please call the Translating and Interpreting Service (TIS National) on 131 450 and request to be transferred to Multicultural Affairs Queensland on 13 QGOV (13 74 68)

CROSSRIVERRAIL
DELIVERY AUTHORITY



Gooding Drive/station access roadworks

Roadworks in both directions will continue on Gooding Drive in 2026 (program and weather permitting).

Intermittent night works will continue throughout both May and June to facilitate centre median demolition and construction, followed by road profiling and asphaltting in both directions.

These activities can only be undertaken safely at night under traffic management. Residents located near these activities will continue to receive direct reminders prior to works commencing.

Activities will include:

- Centre median demolition and construction, including construction of new turning lanes into the station access road.
- Demolition and installation of utilities and services, including drainage, water main, sewer and lighting, pit excavation, trenching and electrical works.
- Road profiling, asphaltting, line marking activities and pavement placements
- Kerb, verge and footpath works, including ongoing concrete activities.
- Installation of fencing, road barriers and guard rail, including concrete works.
- Access road construction, including pavement and surface activities and material deliveries.
- Landscaping, traffic signalling and detector loop installation.
- Vegetation pruning and clearing in accordance with all relevant approvals, with fauna spotter/catchers in attendance.
- Reinstatement of sections of the Gooding Drive noise barrier (eastbound).

Scan the QR code below for our Gooding Drive Roadworks factsheet, or visit crossriverrail.com.au

Standard construction hours

Works will be undertaken between 7:00am to 6:00pm, Monday to Friday, and 8:00am to 1:00pm Saturday (where required).

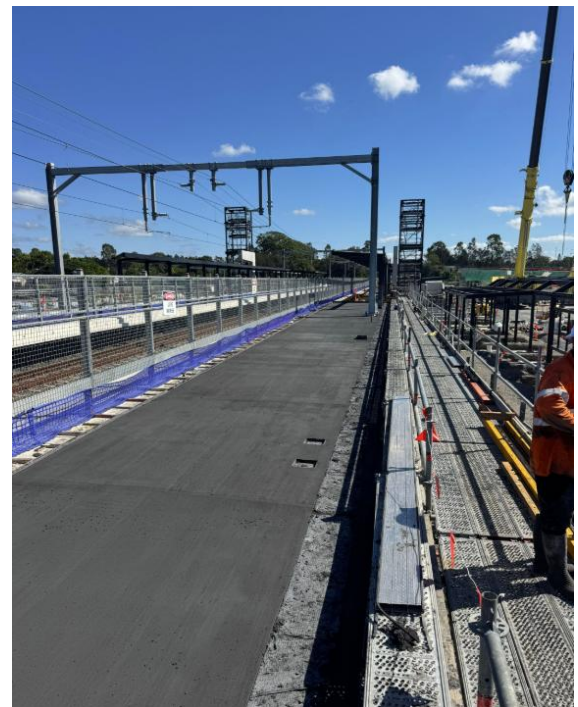
Night works

Out of hours activities will be undertaken from 7:00am to 6:00am, Monday to Sunday.



Traffic and pedestrian changes

- Lane width reductions and alignment changes on Gooding Drive in both directions.
- Intermittent single lane closures, speed reductions and short-term delays on Gooding Drive in both directions, between Ghilgai Road and Bourton Road.
- Ongoing intermittent delays and changes to cyclist and pedestrian movements around Gooding Drive.
- Workers and vehicles accessing the site via Gooding Drive (both directions), Entry Drive, Crelga Court, Nisbet Place and Willunga Place.
- Intermittent parking restrictions and short-term changes to haulage routes.
- Traffic management and road signage will assist and direct motorists, pedestrians and cyclists.



Above: station platform construction is underway.



1800 010 875



merrimacstation@fultonhogan.com.au



crossriverrail.qld.gov.au



If you need an interpreter to assist you in understanding this document, please call the Translating and Interpreting Service (TIS National) on 131 450 and request to be transferred to Multicultural Affairs Queensland on 13 QGOV (13 74 68)

CROSSRIVERRAIL
DELIVERY AUTHORITY



Queensland
Government

What to expect

- Construction activities may generate increased levels of heavy vehicles, noise, vibration, dust and potential odours (from asphaltting) in the area. Every effort will be made to keep these changes to a minimum.
- An increase in worker and construction presence on Gooding Drive, including intermittent noise at night.
- Construction activity and heavy vehicle movements will continue to transport materials to the site via Gooding Drive (both directions), Entry Drive and Crelga Court as required.
- Intermittent use of mobile lighting towers and safety lighting within the rail reserve and on Gooding Drive (both directions). Every effort will be made to position light sources away from properties.
- The use of machinery including elevated work platforms, trucks, excavators, concrete machinery, cranes and boom lifts, asphalt plant and rollers, line marking equipment, vibration hammers, cable hauling equipment and handheld tools.

Works areas and vehicle movements



Changes to the way you travel

Construction of new stations on the Gold Coast line, including Merrimac, can mean changes to your travel. We encourage you to plan ahead by downloading the Translink app, visiting Translink.com.au or calling 13 12 30.

Project information

For more information about the project, visit www.crossriversrail.qld.gov.au. Scan the QR code to register to receive monthly project updates via email.

To speak with a member of the project team, please contact 1800 010 875 or email merrimacstation@fultonhogan.com.au

To view and provide feedback on Fulton Hogan's Communication and Engagement Strategy, please contact the project team.



Merrimac



1800 010 875



merrimacstation@fultonhogan.com.au



crossriversrail.qld.gov.au



If you need an interpreter to assist you in understanding this document, please call the Translating and Interpreting Service (TIS National) on 131 450 and request to be transferred to Multicultural Affairs Queensland on 13 QGOV (13 74 68)

CROSSRIVERRAIL
DELIVERY AUTHORITY



Queensland
Government