



Cross River Rail Project

Monthly Environmental Report

December 2025

Table of contents

EXECUTIVE SUMMARY	3
NON-COMPLIANCE EVENTS	8
DEFINITIONS.....	9
1. INTRODUCTION	10
1.1. BACKGROUND.....	10
1.2. PROJECT DELIVERY.....	10
1.3. REPORTING FRAMEWORK	12
1.4. MONTHLY ENVIRONMENT REPORT ENDORSEMENT	12
2. COMPLIANCE REVIEW	12
2.1. RELEVANT PROJECT WORKS	12
2.2. KEY ENVIRONMENTAL ELEMENTS	14
2.2.1. Noise.....	14
2.2.2. Vibration	16
2.2.3. Air Quality.....	16
2.2.4. Water Quality	18
2.2.5. Erosion and Sediment Control.....	21
2.3. COMPLAINTS MANAGEMENT	21
2.4. NEW UPCOMING PROJECT WORKS.....	23
2.5. NON-COMPLIANCE EVENTS.....	25
APPENDIX A RIS MONTHLY REPORT	27
APPENDIX B TSD MONTHLY REPORT	28

Executive Summary

This Monthly Environmental Report (MER) has been produced for Project Works undertaken on site for December 2025 for the Rail, Integration and Systems (RIS), and Tunnel, Stations and Development (TSD) packages. The report addresses the obligations outlined in the Coordinator-General's change report – Coordinator-General's change report – no. 15 (March 2025) and the individual contractor's Construction Environmental Management Plans (CEMPs), which have been developed generally in accordance with the Project's Outline Environmental Management Plan (OEMP). The Cross River Rail Delivery Authority (Delivery Authority), as the Proponent of the Cross River Rail Project, is required to submit a monthly report to the Coordinator-General to demonstrate compliance with the imposed conditions.

Section 1 of this report provides a background to the project and the Coordinator-General's conditions. Section 2 provides a review of the contractor's reports contained in Appendix A (RIS Monthly Report) and Appendix B (TSD Monthly Report).

The Environmental Monitor (EM) has reviewed and endorsed this MER. This endorsement follows ongoing and new document reviews, and surveillance across the relevant project worksites.

The CEMPs prepared by both Unity Alliance (RIS Contractor) and CBGU JV on behalf of Pulse (TSD Contractor) for their Relevant Project Works were endorsed by the EM and submitted to the Coordinator-General in accordance with Condition 4(a) and 4(b) respectively.

The table below presents a summary of compliance status against each condition with a short comment for each:

Imposed Condition	Requirement Summary	Compliance Met (Yes/No/NA)	Comment
1.	General conditions – compliance with the Project Changes relevant to the contractor's scope	Yes	The CEMP and site management plans are in accordance with the Project Changes.
2.	Outline Environmental Management Plan – timely submission to the Coordinator-General including required sub-plans	Yes	OEMP dated June 2020 is effective for the reporting period.

Imposed Condition	Requirement Summary	Compliance Met (Yes/No/NA)	Comment
3.	Design – achievement of the Environmental Design Requirements	NA	Ongoing progress with design packages.
4.	Construction Environmental Management Plan – all relating to Relevant Project Works.	Yes	RIS – CEMP Revision 13 covering full scope of RIS works is effective from 14 March 2022. TSD – CEMP Revision 12 covering full scope of TSD works is effective from 6 June 2024.
5.	Compliance and Incident management – Non-compliance events, notifications and reporting.	Yes	No Non-Compliance Event (NCE) was reported in December 2025.
6.	Reporting – Monthly and Annual reporting.	Yes	This MER, including RIS and TSD Monthly Reports, has been submitted in accordance with the conditioned requirements. Refer to Appendix A and Appendix B .
7.	Environmental Monitor (EM) – engaged and functions resumed.	Yes	Ongoing weekly site inspections and document reviews continue to take place.
8.	Community Relations Monitor (CRM) – engaged and functions resumed.	Yes	Ongoing.
9.	Community Engagement Plan – developed and endorsed by Environmental Monitor.	Yes	CEMPs endorsed with Community Engagement Plan.
10.	Hours of work – Project Works undertaken during approved hours.	Yes	Project Works have been undertaken in accordance with project requirements. This has been achieved through Standard Working Hours, Extended work hours and Managed Work.
11.	Noise – Project Works must aim to achieve internal noise goals for human health and well-being.	Yes	Noise monitoring met project noise requirements at Sensitive Places. RIS – Noise monitoring was undertaken to monitor construction impacts at sensitive places. Noise monitoring confirmed project requirements were met. Refer to Appendix A (Section 2.1 and Table 1).

Imposed Condition	Requirement Summary	Compliance Met (Yes/No/NA)	Comment
			TSD – Noise monitoring was undertaken to monitor construction impacts at sensitive places. Noise monitoring confirmed project requirements were met. Refer to Appendix B (Section 3.2 and Table 3).
	Vibration – Project Works must aim to achieve vibration goals for cosmetic damage, human comfort and sensitive building contents.	Yes	RIS – No vibration monitoring was undertaken during December 2025. TSD – No vibration monitoring was undertaken during December 2025.
12.	Property damage – relating to ground movement.	Yes	RIS – Vibration modelling has been undertaken for Relevant Project Works, and Property Damage Sub-plans have been developed and implemented. Pre-condition surveys have been completed at heritage, commercial and residential buildings at RNA, Northern Corridor and Dutton Park to Salisbury stations. TSD – Vibration modelling has been prepared and is ongoing. Where required, building condition survey reports are completed for heritage and residential buildings.
13.	Air quality – Works must aim to achieve air quality goals for human health and nuisance.	Yes	Air quality monitoring met Project air quality requirements. RIS – Contractor confirmed they continued to meet the requirements under Condition 13 and the OEMP. Refer to Appendix A (Section 2.3 and Table 3, plus Figures 1, 2, and 3). TSD – data gaps reported due to technical difficulties on Woolloongabba air quality unit and tampering with an Albert Street dust gauge sample. The contractor confirmed they continued to meet the requirements under Condition 13 and the OEMP. Refer to Appendix B (Section 3.3 and Table 4 and 5).
14.	Traffic and transport – Works must minimise adverse impacts on road safety and traffic flow.	Yes	Traffic Management Plans are covered in the CEMPs. Sub-plans for all active worksites have been reviewed and endorsed by the EM.

Imposed Condition	Requirement Summary	Compliance Met (Yes/No/NA)	Comment
15.	<p>Water quality – Works must not discharge groundwater from the construction site above the relevant environmental values and water quality objectives.</p> <p>Monitor and report on water quality in accordance with CEMP and Sub-plans.</p>	Yes	<p>Monitoring and reporting on groundwater and surface water quality was undertaken in accordance with RIS and TSD Water Quality Management Plans.</p> <p>RIS – No groundwater discharges occurred during December 2025.</p> <p>Post-rainfall monitoring was undertaken as per Condition 15(b). The RIS contractor confirmed the project outcomes were met. Refer to Appendix A (Section 2.4.1, Figure 4 and Table 3) for post rainfall monitoring results.</p> <p>TSD – Active discharge of groundwater occurred from Woolloongabba station and Boggo Road. Monitoring results of groundwater quality prior to discharge is consistent with the pre-construction water quality levels. Refer to Appendix B (Section 3.4.1 and Table 6) for groundwater monitoring results.</p> <p>Surface water discharges occurred at the Northern Portal, Roma Street and Albert Street. The monitoring results demonstrated surface water discharges met project water quality discharge criteria. Refer to Appendix B (Section 3.4.2 and Table 7) for surface water monitoring results.</p> <p>Post rainfall monitoring was undertaken as per Condition 15(b). The TSD contractor confirmed the project outcomes were met. Refer to Appendix B (Section 3.5 and Table 8) for further details.</p> <p>Routine surface water monitoring occurred across TSD project sites. The TSD contractor confirmed the project outcomes were met. Refer to Appendix B (Section 3.5 and Table 8) for further details.</p>
16.	<p>Water resources – Evaluate potential impact, plan works, implement controls and monitor inflow of groundwater associated with drawdown.</p>	Yes	<p>RIS – There is no sustained groundwater extraction involved in the RIS scope of works so predictive modelling of groundwater drawdown is not required. Collection of hydrological data to model potential inflow rates into excavations</p>

Imposed Condition	Requirement Summary	Compliance Met (Yes/No/NA)	Comment
			during construction has been undertaken. TSD – Inflow of groundwater into the worksites is being continuously monitored to validate the predictive modelling.
17.	Surface water – Must be designed to avoid inundation from stormwater due to a 2-year (6hr) ARI rainfall event and flood waters due to a 5-year ARI rainfall event and constructed to avoid afflux or cause the redirection of uncontrolled surface water flows, including stormwater flows, outside of worksites.	Yes	Contractors continue to consider this condition in their site planning and design.
18.	Erosion and sediment control – Provisions for erosion and sediment control must be consistent with the Guidelines for Best Practice Erosion and Sediment Control (International Erosion Control Association, 2008) and the Department of Transport and Main Roads' Technical Standard MRTS52.	Yes	Site specific ESC plans for all active work sites have been reviewed by the EM and implemented on site.
19.	Acid sulfate soils – managed as per the Queensland Acid Sulfate Soil Technical Manual.	Yes	Acid Sulfate Soil Management Plans have been prepared and implemented for all active worksites.
20.	Landscape and open space – general requirement to minimise impacts on landscapes and open space values and specific requirements around Victoria Park.	Yes	The construction of a temporary access road through Victoria Park was undertaken under a Heritage Exemption Certificate approved by the Department of the Environment, Tourism, Science and Innovation (DETSI) on 24 July 2021. Consideration has been taken to minimise loss of trees and park area impacted during these temporary works. Replanting works completed and the area returned to BCC.
21.	Worksite rehabilitation – worksites rehabilitated as soon as practicable upon completion of works or commissioning, and in consultation with Brisbane City	Yes	Worksites for Exhibition, Fairfield, Yeronga, Yeerongpilly and Rocklea stations have been rehabilitated upon completion of the works in consultation with BCC and QR, as appropriate. Worksite rehabilitation has

Imposed Condition	Requirement Summary	Compliance Met (Yes/No/NA)	Comment
	Council.		satisfied erosion and sediment control, dust nuisance, landscaping and visual impact requirements.

Non-Compliance Events

There were no NCEs recorded in December 2025.

This document is the property of the Cross River Rail Delivery Authority. It may not be copied or reproduced without permission.



Definitions

Acronym	Definition
ARI	Average Recurrence Interval – The average or expected value of the periods between exceedances of a given rainfall total accumulated over a given duration.
CEMP	Construction Environmental Management Plan
CGCR	Coordinator-General's Change Report
CRM	The Community Relations Monitor engaged in accordance with Imposed Condition 8
Contractor	The contractors appointed to design, construct, and commission the Project
Coordinator-General	The corporation sole preserved, continued, and constituted under section 8 of the SDPWO Act.
CRR	Cross River Rail
DAP	Directly Affected Persons
DETSI	Department of Environment, Tourism, Science and Innovation
EIS	Environmental Impact Statement
EM	The Environmental Monitor engaged in accordance with Imposed Condition 7
ESC	Erosion and sediment control
IECA	International Erosion Control Association
Imposed condition/s	A condition/s imposed by the Coordinator-General under section 54B of the SDPWO Act for the Project
MER	Monthly Environment Report
MRTS52	Transport and Main Roads Specifications MRTS52 Erosion and Sediment Control
NCE	Non-Compliance Event
OEMP	Outline Environmental Management Plan
Project	The Cross River Rail Project
Project Works	As defined in the Imposed Conditions
Proponent	The Cross River Rail Delivery Authority
RfPC	Request for Project Change
RIS	Rail, Integration and Systems
SDPWO Act	<i>State Development and Public Works Organisation Act 1971</i>
Sub-plan	Any sub-plan of the CEMP
The Delivery Authority	The Cross River Rail Delivery Authority
TSD	Tunnel, Stations and Development

1. Introduction

1.1. Background

The Cross River Rail Project (the Project) is a declared coordinated project under the *State Development and Public Works Organisation Act 1971* (SDPWO Act). The CRR Environmental Impact Statement (EIS) was evaluated by the Coordinator-General who recommended the Project proceed, subject to Imposed Conditions and recommendations. Since the evaluation of the EIS, several Requests for Project Change (RfPC) submissions have been evaluated by the Coordinator-General. RfPC 15 was endorsed on 07 March 2025 by the Coordinator-General.

The Coordinator-General has imposed conditions on the Project that apply throughout the design, construction, and commissioning phases. These are referred to as the Imposed Conditions. In addition, the Coordinator-General has approved the Project's OEMP which outlines the environmental management framework for the Project. The OEMP includes environmental outcomes and performance criteria which must be achieved for the Project.

Imposed Conditions 5 and 6 nominate the compliance and reporting requirements for the Project. This monthly report addresses these requirements.

1.2. Project Delivery

The Delivery Authority is responsible for planning and delivering the Project. The Project established environmental management plans and secured some of the secondary environmental approvals in addition to enabling works.

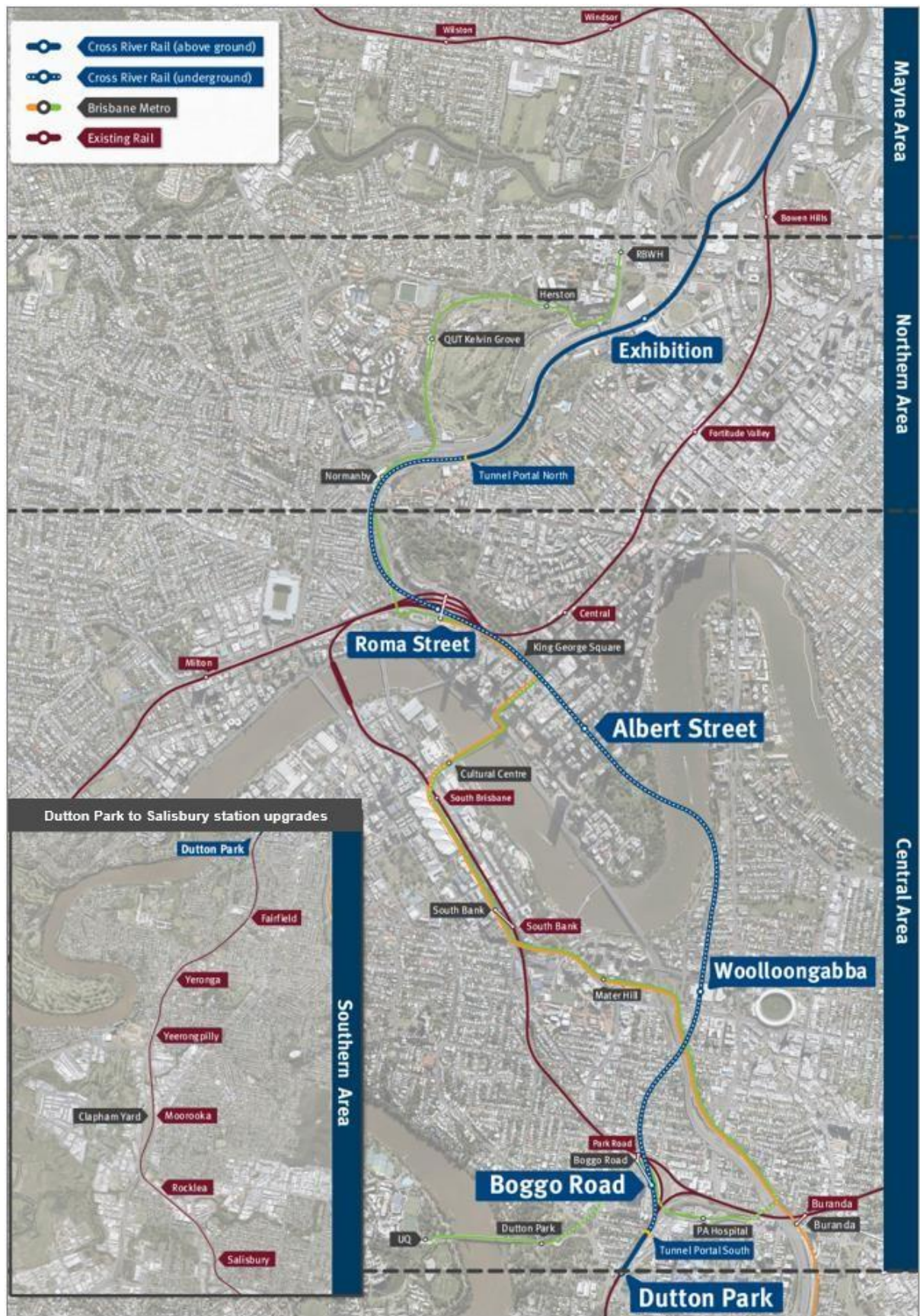
The two main delivery packages which require reporting under the Coordinator-General's imposed conditions are:

- Tunnel, Stations and Development (TSD) being delivered by CBGU JV; and
- Rail, Integration and Systems (RIS) being delivered by Unity Alliance.

The Project is geographically divided into four areas:

- Mayne Area;
- Northern Area;
- Central Area; and
- Southern Area.

These areas and delivery packages are shown in the figure below.



This document is the property of the Cross River Rail Delivery Authority. It may not be copied or reproduced without permission.

1.3. Reporting Framework

This MER has been prepared to comply with Imposed Conditions 6 and 7 of the Coordinator-General Change Report (CGCR) and includes:

- monitoring data and associated interpretation of the results required by the imposed conditions and Construction Environmental Management Plan (CEMP);
- details of any NCEs, including incidents, corrective actions, and preventative actions; and
- details of any complaints, including description, responses, and corrective actions.

Reporting on environmental elements captured in each monthly environmental report, including the annual environmental report, is reviewed and endorsed by the EM.

1.4. Monthly Environment Report Endorsement

This MER has been endorsed by the EM and the endorsement provided to the Coordinator-General.

2. Compliance Review

This MER has been reviewed and endorsed by the EM as per Imposed Condition 7 of the CGCR.

2.1. Relevant Project Works

The following Project Works were undertaken in December 2025:

Area	Project Works
Mayne Area	Mayne Yard North – <ul style="list-style-type: none">• Practical Completion (PC) Part 2 submitted. Mayne Yard East – <ul style="list-style-type: none">• Signal and OHLE foundations ongoing;• Low voltage (LV), comms cabling terminations and testing ongoing;• Rail bridge works across Breakfast Creek and culvert maintenance; and• Rail track construction, ballast placement, sleeper and rail construction;
Northern Area	RNA / Exhibition – <ul style="list-style-type: none">• Preparation of final submission of as-constructed works. Northern Corridor – <ul style="list-style-type: none">• Northern Portal Enhanced Radio System (ERS) remains waiting handover from TSD to complete testing and commissioning (T&C);• Fibre terminations and testing ongoing; and• Further progress on interconnector.

Area	Project Works
Central Area	<p>Roma Street –</p> <ul style="list-style-type: none"> • Urban Realm – ongoing demolition, utility works and footpath construction; • Plaza landscaping works; • Platform 2 preparation for stairs construction; • Ongoing tiling and balustrade installation; and • Ongoing ceiling closure, floor finishes, painting and cabinetry in BoH rooms. <p>Albert Street –</p> <ul style="list-style-type: none"> • Lot 1 – Mechanical and electrical (M&E) fitout ongoing throughout, canopy steel installation nearing completion with canopy cladding continues, architectural louvre and Tunnel Ventilation System (TVS) installation; • Lot 2 – terrazzo tiling and skirting nearing completion, comms and controls fitout on platform level; • Lot 3 – escalator fitout works, signage and wayfinding installation continues including framing; and • Green Spine – services and utility works, line marking, gantry and facilities adjustments, and removing and installing street furniture. Charlotte Street intersection works underway. <p>Woolloongabba –</p> <ul style="list-style-type: none"> • East-West Road works and ticket office build ongoing; • Station fitout works with cladding, soffits, tiling and signage ongoing; • Water feature progressing and escalator fitout continues; • Services works and landscaping installation continued; and • Site office demobilisation completed. <p>Boggo Road –</p> <ul style="list-style-type: none"> • Continuing retaining wall works; • Platform tiling, screeding and cabling ongoing; • BoH M&E fitout ongoing; and • Canopy works continues. <p>Southern Portal –</p> <ul style="list-style-type: none"> • Yamma Bridge – handrails installation continued and roof sheeting over walkway in main span completed, screen installation for the loop ongoing; • Closure of temporary access drive complete. Backfilling continuing; and • Commence works on additional sediment basins.
Southern Area	<p>Southern / Dutton Park –</p> <ul style="list-style-type: none"> • Progressed with general corridor completion works such as corridor drainage, civils and completions; • ROS (Rail Operating System) installation with handover to T&C; • Works along Ensign Avenue; • Boundary fence works toward Cope Street completed; and • Kent Street works progressing with final works and landscaping. <p>Yeerongpilly station –</p> <ul style="list-style-type: none"> • PC Part 2 submitted; and • As-Built drawings submitted.

Area	Project Works
	<p>Moorooka station –</p> <ul style="list-style-type: none"> Platform 3 in-ground services and backfilling ongoing; Procurement of key packages underway; and Temporary Ipswich Road traffic signal design underway. <p>Clapham Yard –</p> <ul style="list-style-type: none"> Rail Operating System (ROS), signalling and OHLE foundations ongoing; Rail Traffic Crew Building works continue with foundations and blockworks; Crew Maintenance Facility building FRP slabs ongoing, structural steel, precast concrete and roof installation and ceiling and partitions continues; Stabling Yard fencing ongoing; Viaduct and Moolabin Creek bridge FRP; Earthworks, hydraulics scope, and CSR works ongoing; and First rail delivery completed and signalling hut offsite fitout continues. <p>Rocklea station –</p> <ul style="list-style-type: none"> PC Part 2 submitted; and As-Built drawings submitted. <p>Salisbury –</p> <ul style="list-style-type: none"> Final landscaping along with T&C continued; and Lift construction and Certifier inspection ongoing.

2.2. Key Environmental Elements

2.2.1. Noise

The Coordinator-General's conditions establish a framework for managing the impacts of noise. The Imposed Conditions do not establish noise limits. Compliance with the Imposed Conditions noise requirements involve demonstrating the implementation of the endorsed CEMP and associated Noise and Vibration Management Plan. This establishes the management measures to be applied which aims to achieve the identified noise goals as far as reasonably practicable. The CEMP also includes requirements for the provision of the required community notifications of upcoming work, potential impacts, and how the project team can be contacted in relation to any potential impacts.

For Project Works where potential noise impacts are modelled to be above the noise goal but below the noise goal plus 20dBA, this work is authorised where the endorsed CEMP and associated Noise and Vibration Management Plan is being implemented, including communicating construction activities to potential and actual Directly Affected Persons (DAPs). For Project Works where potential noise impacts are predicted to be more than 20dBA above the relevant noise goal, specific engagement is required with DAPs for these works. Where this

requirement was triggered for Albert Street works in December 2025 all engagement and consultation with DAPs was completed as per the endorsed CEMP, associated Noise and Vibration Management Plan and the Imposed Conditions.

Where internal monitoring was not possible, contractors have undertaken external monitoring at nominated locations. To assess external monitoring and determine compliance with the project's noise requirements, the project applies recommended façade attenuation corrections, which considers receiver property type.

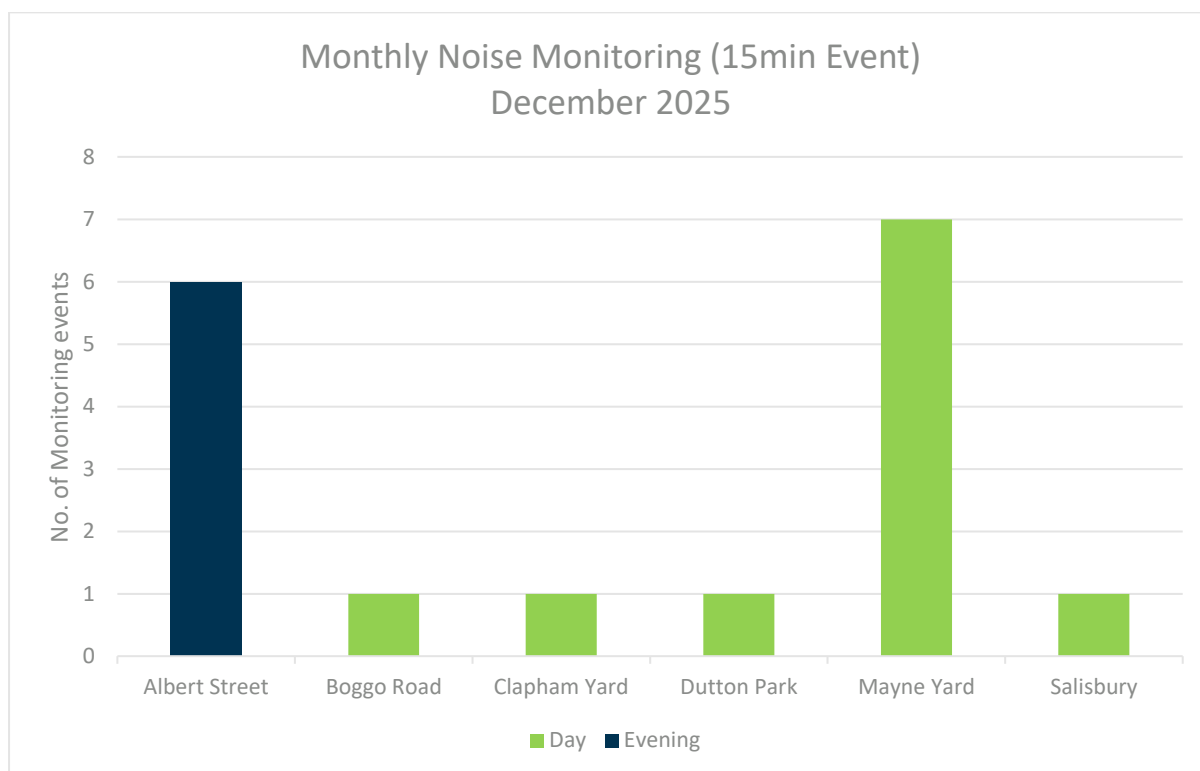
In the Mayne Area, noise monitoring was undertaken to monitor construction impacts at sensitive places for SCAS works including OHLE, track, civil and signalling works at Mayne Yard. The RIS contractor reported that the project noise requirements have been met during this reporting month. Monitoring results for the Mayne Area are detailed in **Appendix A** (Section 2.1 and Table 1).

In the Central Area, noise monitoring was undertaken for model verification of road and utilities works at Albert Street and for model verification of concrete demolition at the Boggo Road precinct.

Consistent with the construction noise modelling for the planned activities, on one occasion noise monitoring completed at Albert Street recorded noise levels over 20dBA above the noise goal. This occurred during monitoring at a DAP location for model verification. As outlined earlier, the TSD contractor completed all required engagement and consultation with identified DAPs prior to these works commencing. Monitoring results for the Central Area are detailed in **Appendix B** (Section 3.2 and Table 3). The project noise requirements have been met.

In the Southern Area, noise monitoring was undertaken to monitor construction impacts at sensitive places for laydown activities at Dutton Park, civil works at Clapham Yard and for station fitout and civil works at Salisbury station. The RIS contractor reported that the project noise requirements have been met during this reporting month. Monitoring results for the Southern Area are detailed in **Appendix A** (Section 2.1 and Table 1).

For areas where monitoring was not completed, including the Out of Hours works, potential noise levels have been previously assessed and monitored for similar activities. Subsequently these works and their potential noise levels were deemed consistent with previous monitoring undertaken for the project across the relevant locations. A summary of noise monitoring events for the month is provided in the chart below:



2.2.2. Vibration

For all Areas, no vibration monitoring was undertaken during the period, and no complaint-based vibration monitoring was triggered.

2.2.3. Air Quality

2.2.3.1. Dust Deposition

Dust deposition monitoring was conducted at Mayne, Central and Southern Areas. Results met the project air quality goal¹ for all active worksites.

In the Northern Area, the dust deposition gauge (DDG) was decommissioned in December 2025 following the completion of construction works and demobilisation in November 2025.

In the Central Area, Albert Street's DDG was found tampered with and contained significant foreign objects in the sampling bottle. These consisted of melted plastics, ash and other unidentifiable objects. Consequently, no sample was available for analysis in this reporting period. The TSD contractor confirmed that no dust-generating activities were conducted throughout the reporting period. No air quality complaints were received, and ongoing site management practices were implemented as per the CEMP and Sub-Plans confirming the

Contractor met the overall requirements of the Imposed Conditions. For further details see **Appendix B** (Section 3.3.1, Table 4 and Figures 1, 2 and 3).

A summary of the dust deposition results for the reporting period is in the table below:

Air Quality – Dust Deposition Monitoring			
Area	Worksite	Monitoring Location	Comments
Mayne Area	Mayne Yard	Mayne Yard North	- Results met air quality goal.
Northern Area	Northern Portal	Northern Portal (near Brisbane Girls Grammar School)	- The DDG was decommissioned in the reporting month following completion of construction activities and demobilisation from the site.
Central Area	Albert Street	Mary Street	- No sample was available as there were foreign objects in the sampling bottle. - Contractor demonstrated project requirements were met through the implementation of site management practices as per the CEMP and Sub Plans.
		Elizabeth Street	- Results met air quality goal.
	Boggo Road	Quarry Street (north of the site)	- Results met air quality goal.
		Peter Doherty Street/Leukaemia Foundation	- Results met air quality goal.
	Southern Portal	PA Hospital - Central Energy Unit along Kent Street	- Results met air quality goal.
	Roma Street	Roma Street station	- Results met air quality goal.
	Woolloongabba	Russian Orthodox Cathedral	- Results met air quality goal.
		Woolloongabba Busway	- Results met air quality goal.
Southern Area	Dutton Park	Kent Street	- Results met air quality goal.
	Clapham Yard	Clapham Yard	- Results met air quality goal.
	Salisbury	Salisbury station car park	- Results met air quality goal.
		Salisbury Fairlie Terrace	- Results met air quality goal.

¹CG air quality goal for dust deposition - 120µg/m² (over an averaging period of 30 days).

2.2.3.2. Particulate Matter and Total Suspended Particulates

Monitoring for particulate matter (PM₁₀) and total suspended particulates (TSP) was conducted at Mayne, Central and Southern Area worksites during the reporting period. Both contractors

confirmed their results obtained throughout the month met the project goals at all active worksites.

In the Central Area, the Woolloongabba air quality unit experienced technical difficulties from 5 December 2025. This was first detected during the data download for the reporting period as the error notification alarm failed to activate. The Contractor is investigating solutions to resolve the issue. The nearby DETSI (Woolloongabba) air quality monitoring station confirmed air quality levels were below the air quality goals during the outage period. Refer to **Appendix B** (Section 3.3.2, Table 5 and Figure 3).

A summary of particulate monitoring is provided in the table below:

Air Quality – PM ₁₀ / TSP Monitoring			
Area	Worksite	Monitoring Location	Comments
Mayne Area	Mayne Yard	Mayne Yard East	- Results met air quality goals.
Central Area	Albert Street	iStay River City (Corner of Mary Street and Albert Street)	- Results met air quality goals.
	Boggo Road / Southern Portal	Northeast of Boggo Road worksite	- Results met air quality goals.
	Woolloongabba	Place Park, Woolloongabba	- Results met air quality goals. - Technical difficulties from 5 December 2025.
Southern Area	Clapham Yard	Clapham Yard	- Results met air quality goals.

2.2.4. Water Quality

Water quality monitoring and reporting was undertaken in accordance with the contractors CEMP and Water Quality Management Plans.

2.2.4.1. Surface Water

During December 2025, active surface water discharges occurred in the Northern and Central Area. Post-rainfall water quality monitoring was triggered at Northern Portal, Albert Street, Roma Street, Woolloongabba, Boggo Road, Clapham Yard and Salisbury sites.

In the Northern Area, active surface water discharge monitoring occurred on one (1) occasion at Northern Portal. The monitoring results demonstrated active surface water discharges met project water quality discharge criteria. Post-rainfall monitoring was triggered in the receiving waters of Northern Portal. Refer to **Appendix B** (Section 3.4.2 and 3.5 and Table 7 and 8) for further details.

In the Central Area, active surface water discharge monitoring occurred on one (1) occasion at Roma Street and Albert Street, respectively. The monitoring results demonstrated active surface water discharges met project water quality discharge criteria. Post-rainfall monitoring was triggered in the receiving waters of Roma Street, Albert Street, Woolloongabba, and Boggo Road. Results reflect the condition of the broader catchment upstream from the worksites. Refer to **Appendix B** (Section 3.4.2 and 3.5 and Table 7 and 8) for further details.

In the Southern Area, post-rainfall monitoring was triggered in the receiving waters of Clapham Yard and Salisbury. Results reflect the condition of the broader catchment upstream from the worksites. Refer to **Appendix A** (Section 2.4.1 and Figure 4 and Table 3) for further details.

Routine surface water monitoring was undertaken across the TSD worksites during the reporting period. Results from the locations reflect the condition of the broader catchment upstream from the worksites. Refer to **Appendix B** (Section 3.5 and Table 8) for further details.

Surface water quality monitoring is summarised in the table below:

Surface Water Quality Monitoring					
Area	Worksite	Discharge	Post-Rain Monitoring	Routine Monitoring	Comments
Mayne Area	Mayne Yard North	No	No	No	- ESC was implemented in accordance with site specific ESC Plan.
Northern Area	Northern Portal	Yes	Yes	Yes	- Post-rainfall monitoring undertaken. - Active surface water discharge met water quality investigation criteria. - Routine in-stream monitoring undertaken in accordance with WQMP. - ESC was implemented in accordance with site specific ESC Plan.
	Northern Corridor	No	No	No	- ESC was implemented in accordance with site specific ESC Plan.
Central Area	Albert Street	Yes	Yes	Yes	- Post-rainfall monitoring undertaken. - Active surface water discharge met water quality investigation criteria. - Routine in-stream monitoring undertaken in accordance with WQMP. - ESC was implemented in accordance with site specific ESC Plan.
	Boggo Road	No	Yes	Yes	- Post-rainfall monitoring undertaken. - Routine in-stream monitoring undertaken in accordance with WQMP. - ESC was implemented in accordance with site specific ESC Plan.

Surface Water Quality Monitoring					
	Roma Street	Yes	Yes	Yes	<ul style="list-style-type: none"> - Post-rainfall monitoring undertaken. - Active surface water discharge met water quality investigation criteria. - Routine in-stream monitoring undertaken in accordance with WQMP. - ESC was implemented in accordance with site specific ESC Plan.
	Woolloongabba	No	Yes	Yes	<ul style="list-style-type: none"> - Post-rainfall monitoring undertaken. - Routine in-stream monitoring undertaken in accordance with WQMP. - ESC was implemented in accordance with site specific ESC Plan.
	Southern Portal	No	Yes	No	<ul style="list-style-type: none"> - Post-rainfall monitoring undertaken. - ESC was implemented in accordance with site specific ESC Plan.
Southern Area	Dutton Park	No	No	No	<ul style="list-style-type: none"> - ESC was implemented in accordance with site specific ESC Plan.
	Clapham Yard	No	Yes	No	<ul style="list-style-type: none"> - Post-rainfall monitoring undertaken. - ESC was implemented in accordance with site specific ESC Plan.
	Salisbury	No	Yes	No	<ul style="list-style-type: none"> - Post-rainfall monitoring undertaken with levels exceeding the goals. Site inspections confirmed sediment and erosion controls were in place and no dewatering was conducted during the period. - ESC was implemented in accordance with site specific ESC Plan.

2.2.4.2. Groundwater

Groundwater discharge occurred at Woolloongabba and Boggo Road. The groundwater discharge results exceeded relevant water quality objectives (WQOs)² for several water quality parameters. However, these results are consistent with the receiving environment baseline monitoring pre-construction data. The contractor confirmed no changes have occurred onsite to the construction methodologies that would have affected the groundwater results. Water treatment plant results will be reported quarterly. Refer to **Appendix B** (Section 3.4.1 and Table 6) for further details.

There were no groundwater discharges at Mayne, Northern or Southern Area worksites. Groundwater quality monitoring is summarised in the table below:

Groundwater Quality Monitoring			
Area	Worksite	Discharge	Comments
Mayne Area	Mayne Yard North	No	- No groundwater discharges.

Groundwater Quality Monitoring			
Area	Worksite	Discharge	Comments
Northern Area	RNA / Exhibition	No	- No groundwater discharges.
	Northern Portal	No	- No groundwater discharges.
Central Area	Albert Street	No	- No groundwater discharges.
	Boggo Road / Southern Portal	Yes	- Discharge of groundwater met Project requirements.
	Roma Street	No	- No groundwater discharges.
	Woolloongabba	Yes	- Discharge of groundwater met Project requirements.
Southern Area	Clapham Yard	No	- No groundwater discharges.

¹ The Brisbane River Estuary environmental values and water quality objectives (Basin no 143 – mid-estuary) in the Environmental Protection (Water) Policy 2009

2.2.5. Erosion and Sediment Control

Site specific Erosion and Sediment Control (ESC) Plans have been prepared, updated, and implemented at Mayne Yard, Normanby, Northern Portal, Roma Street, Albert Street, Woolloongabba, Boggo Road, Southern Portal, Southern, Dutton Park, Clapham Yard and Salisbury worksites.

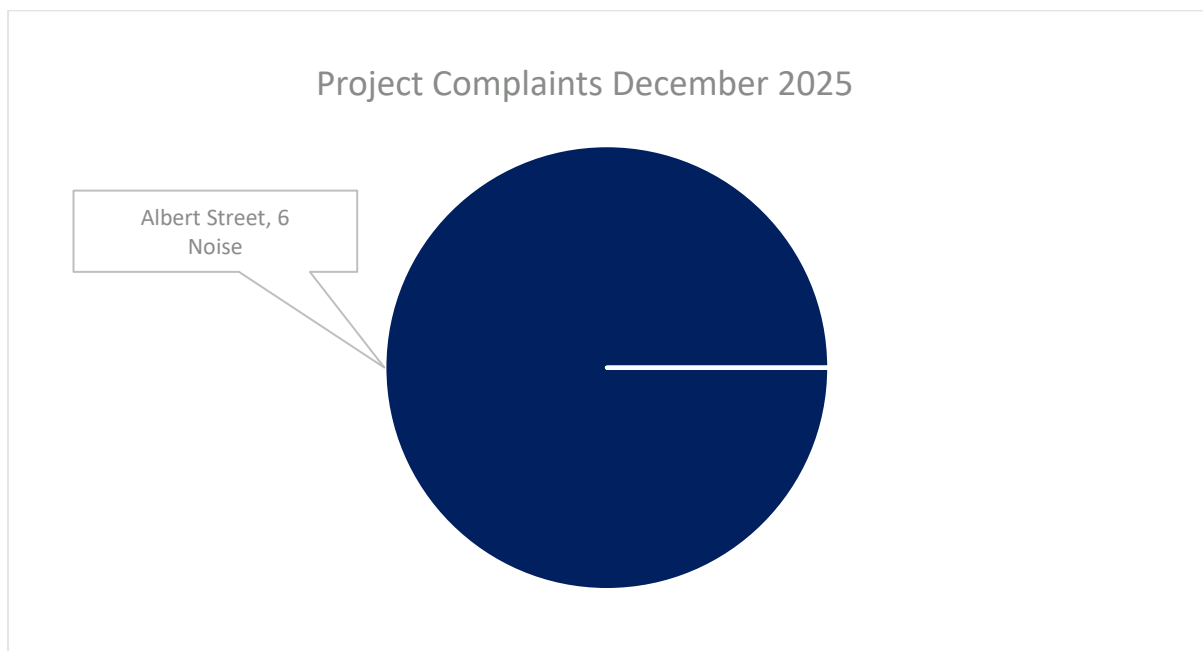
2.3. Complaints Management

A total of seven (7) complaints were received in the reporting period, of which six (6) were related to Project Works.

RIS works received no complaints in December 2025.

TSD works received six (6) complaints in December 2025, relating to noise at Albert Street. For further details and a breakdown of complaints, refer to **Appendix B** (Section 5 and Table 10).

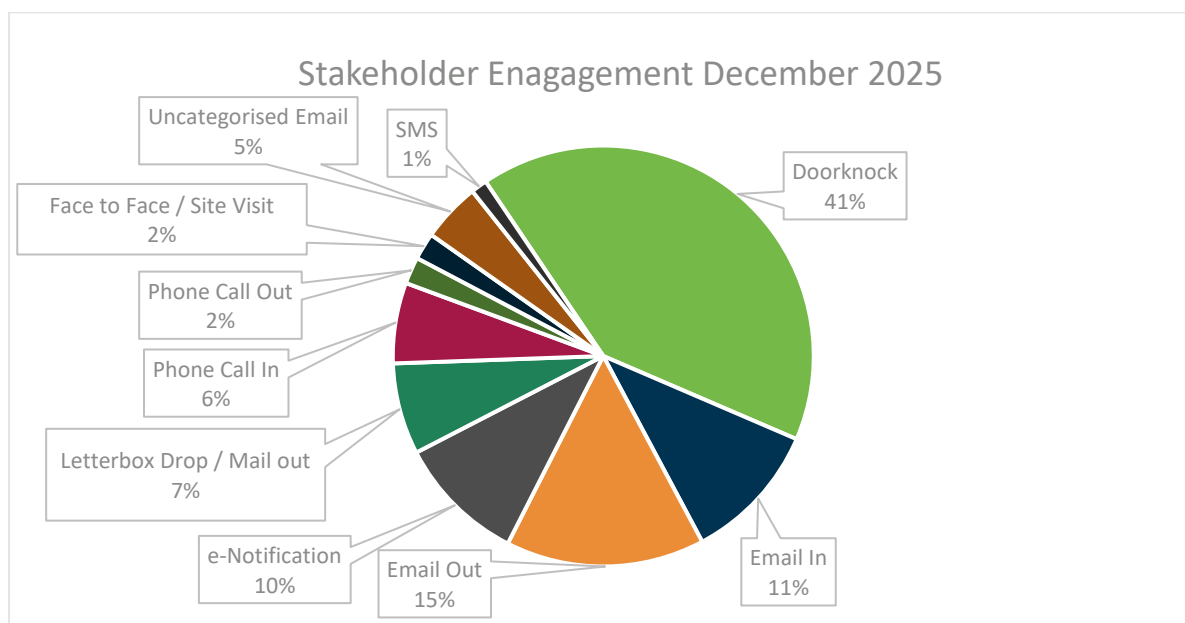
The Project Works related complaints summary for the month is provided in the chart below:



When attended noise monitoring was undertaken in response to a complaint, the contractor confirmed on all occasions that works undertaken at the time of the complaint adhered to project requirements. In all instances this month, previously attended noise monitoring data, representative of the relevant construction activities was used to confirm the works adhered to the project noise requirements.

To close out a complaint, the monitoring data is reviewed (where applicable) against compliance with the CEMP, site environmental management plans and permits, and checks that required community notification has taken place. Contractors have also confirmed that planned mitigation to reduce the impact was implemented. These controls were reviewed collectively together to verify if project requirements have been met.

For scheduled out-of-hours works, community notification was provided, as well as regular project updates. Stakeholder engagement undertaken on the project during the month is in the chart below.



2.4. New Upcoming Project Works

The key new planned Project Works for the coming months include:

Area	New planned works in the coming months
Mayne Area	<p>Mayne Yard North –</p> <ul style="list-style-type: none"> Nil. <p>Mayne Yard East / West –</p> <ul style="list-style-type: none"> Ongoing earthworks, Combined Services Route (CSR), drainage, stormwater, and Rail Systems works in Mayne East entry roads; Removal of redundant structures within the rail corridor; Signalling testing and commissioning; Foundation and installation works for OHLE; Installation of cable routes and pits within the rail corridor; Fibre terminations and testing to continue; Continue construction of the new rail bridge over Breakfast Creek; and Rail track construction including formation works, ballast placement, sleeper and rail construction, resurfacing and welding works.
Northern Area	<p>RNA / Exhibition –</p> <ul style="list-style-type: none"> Prepare final submission of as-constructed works. <p>Northern Corridor –</p> <ul style="list-style-type: none"> Fibre terminations and testing to continue; Track works and maintenance; and Normanby Digital Radio System (DRS) – final integration with QR once Sequence

Area	New planned works in the coming months
	completes their testing and handback to Unity.
Central Area	<p>Roma Street –</p> <ul style="list-style-type: none"> • Urban realm works including Pocket Park works; • Continue services installation and fitout in mezzanine, cavern and station entry building; • Continue lift and escalator fitout works; and • Complete commissioning of Tunnel Ventilation System (TVS). <p>Albert Street –</p> <ul style="list-style-type: none"> • Lot 1 – continue canopy, cladding, roof sheeting, and external wall finishing; • Lot 2 – Continue M&E installation, finalise terrazzo tiling and comms fitout; • Lot 3 – Continue station fitout, signage and wayfinding, and escalator fitout; and • Green Spine – removing and replacing existing street furniture, underground services and pavement works and installing lighting, traffic signals. Complete Charlotte Street intersection works. <p>Woolloongabba –</p> <ul style="list-style-type: none"> • Continue cladding, soffits, tiling, ticket office and complete escalator fitout; • Gibbon and Leopard Street sewer works; • Continue water feature along with East-West road works; • LV switch rooms ready for T&C; and • Ongoing pavement, landscaping and M&E fitout works. <p>Boggo Road –</p> <ul style="list-style-type: none"> • Ongoing M&E fitout works; • Continue terrazzo tiling, electric cable pulling, electrical terminations and TVS installation; • Continue installation of services in the canopy and finalise the retaining wall; and • Landscaping, PSD artwork and station precincts works to commence. <p>Southern Portal –</p> <ul style="list-style-type: none"> • Bridge works continue with handrails, roof and screen installation; • Continue lift fitout and backfilling of decline access; • Caisson pumping station works ongoing; and • Continue works on the sediment basins.
Southern Area	<p>Southern / Dutton Park –</p> <ul style="list-style-type: none"> • Complete works at Kent Street; • Complete ROS (Rail Operating System) installation and handover to T&C; • Works along Ensign Avenue and Fenton Street; and • Continue corridor drainage, civils, OHLE works, cable routes and drainage during available SCAS including limited scope during normal weekdays where possible. <p>Yeerongpilly Station –</p> <ul style="list-style-type: none"> • Final close-out.

Area	New planned works in the coming months
	<p>Moorooka –</p> <ul style="list-style-type: none"> Platform 3 in-ground services, backfilling and palisade fencing continues; Design development and procurement of key packages ongoing; and Traffic Management planning ongoing. <p>Clapham Yard –</p> <ul style="list-style-type: none"> Earthworks, CSR and hydraulics works continue; Crew Maintenance Facility structural steel, pre-cast and roofing continues; Rail Traffic Crew Building FRP, blockworks and ingoing services; ROS, OHLE and Signalling foundations; Complete Bridge 93 FRP substructure with deck; Viaduct FRP continues; Continue stabling yard fencing; Commence capping and subsoils along; and Interlocking preliminary design submission. <p>Rocklea Station –</p> <ul style="list-style-type: none"> Final close-out. <p>Salisbury –</p> <ul style="list-style-type: none"> Complete lift construction and landscaping; Commissioning and Integration; and Stakeholder Certification and Inspections.

2.5. Non-Compliance Events

No NCEs were recorded in December 2025. A summary of NCEs to date is shown in the table below.

Status	Date of Event	Category	Area as on the Report	Relevant Condition	Gate 1	Gate 2	Gate 3	Gate 4
Open								
Closed								
CRRDA-001-RIS-001	9/11/19	Noise	Yeronga Station	4, 10, 11	10/11/19	14/11/19	26/11/19	18/12/19
CRRDA-002-TSD-001	27/03/20	ESC	Woolloongabba	4, 15, 18	30/03/20	31/03/20	22/04/20	11/06/20
CRRDA-003-TSD-002	27/03/20	ESC	Boggo Rd	4, 15, 18	30/03/20	31/03/20	22/04/20	11/06/20
CRRDA-004-TSD-003	28/03/20	Traffic	Boggo Rd	4, 10, 14	30/03/20	31/03/20	22/04/20	11/06/20
CRRDA-005-TSD-004	27/03/20	Reporting	Multiple sites	4, 6, 11, 13	30/03/20	31/03/20	22/04/20	11/06/20
CRRDA-006-TSD-005	27/03/20	Air Quality	Multiple sites	13	30/03/20	31/03/20	22/04/20	11/06/20
CRRDA-009-RIS-003	6/05/22	ESC	Clapham Yard	4	28/10/22	28/10/22	12/12/22	12/12/22
CRRDA-010-RIS-004	10/05/22	Acid Sulphate Soils Management	Clapham Yard	4, 19	28/10/22	28/10/22	12/12/22	12/12/22
CRRDA-11-RIS-005	23/11/22	Out Of Hours Works	Fairfield Station	4,10	14/07/23	14/07/23	14/07/23	12/09/23
CRRDA-12-RIS-006	19/04/24	Construction Traffic Management	Salisbury	4,7,14	04/07/24	04/07/24	04/07/24	11/09/24
Withdrawn								
CRRDA-007-RIS-002	1/04/20	Air Quality	Multiple sites	13	28/04/20	30/04/20	Withdrawn	
CRRDA-008-TSD-006	8/04/20	Working Hours	Roma Street	4,10	28/04/20	30/04/20	Withdrawn	

Gate 1 - EM notification to contractor. NCE confirmed
Gate 2 - 48 hour NCE notification submitted to CG
Gate 3 - 14 day report submitted
Gate 4 - 14 day report uploaded to CRR website

Appendix A RIS Monthly Report

This document is the property of the Cross River Rail Delivery Authority. It may not be copied or reproduced without permission.

COORDINATOR-GENERAL'S MONTHLY REPORT: December 2025

Prepared in accordance with Coordinator-General Imposed Condition 6 - Reporting.

Project number:	Q01080
Document number:	RIS-UNA-ENV-MRP-06610-046
Revision date:	21/01/2026
Revision number:	01

1 Monthly Monitoring Summary

It is UNITY's intent to aim for the Goals and Objectives relevant to vibration, noise, air quality and water monitoring within the practical extent of delivering the Project.

Vibration monitoring was not triggered during December 2025. Noise monitoring was undertaken on ten (10) occasions in December 2025. Each monitoring event that was undertaken confirmed works adhered to Project requirements.

Ambient air quality monitoring was conducted at the Mayne and Clapham Yards during December 2025. Air quality monitoring confirmed works adhered to Project requirements.

Quantitative water quality monitoring was conducted on one (1) occasion during the reporting period. Water quality monitoring was conducted in line with post-rainfall monitoring requirements. Monitoring confirmed no impacts were generated by the Project.

2 Environmental Monitoring Results

Monitoring data is provided below in accordance with Imposed Condition 6(b)(i).

2.1 Noise Monitoring

Noise requirements (levels) are defined as goals within Imposed Condition 11. The goals are to be aimed for.

The Coordinator-General's Change Report acknowledges instances where these goals may not be achieved. Noise monitoring was conducted on ten (10) occasions during December 2025. All noise monitoring adhered to project requirements and monitoring results are detailed in the table below.

Table 1: Noise Monitoring Data

No.	Date/ Time	Location (Street Name) (Construction area)	Purpose of Monitoring	Internal or External Monitoring ^[3]	Activity	Dominant Noise Source	Noise Goal LA10 ^[1]	Noise level LA10	Noise Goal LAeq ^[2]	Noise level LAeq	Adhered to Project Requirements (Yes / No)
1.	04/12/2025 12:00	Ipswich Road (Clapham Yard)	Construction Monitoring at Sensitive Places	External	Civil Works	Non-Project Related Background Noise	70	66.7	60	66.3	Yes
2.	06/12/2025 10:37	Lillian Avenue (Salisbury)	Construction Monitoring at Sensitive Places	External	Station Fit Out and Civil Works	Construction Noise	60	63.2	50	61.7	Yes
3.	10/12/2025 11:37	Annerley Road (Dutton Park)	Construction Monitoring at Sensitive Places	External	Laydown Activities	Non-Project Related Traffic Noise	65	69.7	55	67.7	Yes
4.	20/12/2025 10:40	Corunna Street (Mayne Yard)	Construction Monitoring at Sensitive Places	External	SCAS OHLE Works	Construction Noise	70	58.2	60	52.4	Yes
5.	21/12/2025 09:46	Rosetta Street (Mayne Yard)	Construction Monitoring at Sensitive Places	External	SCAS Track Works	Construction Noise	52	54.0	45	52.9	Yes
6.	21/12/2025 10:20	Abbotsford Road (Mayne Yard)	Construction Monitoring at Sensitive Places	External	SCAS Civil, OHLE and Track Works	Non-Project Related Background Noise	52	68.6	45	66.1	Yes
7.	22/12/2025 09:57	Jamieson Street (Mayne Yard)	Construction Monitoring at Sensitive Places	External	SCAS Signalling Works	Non-Project Related Background Noise	60	58.3	50	56.5	Yes
8.	22/12/2025 10:27	McDonald Road (Mayne Yard)	Construction Monitoring at Sensitive Places	External	SCAS OHLE and Signalling Works	Non-Project Related Background Noise	60	59.7	50	59.2	Yes
9.	24/12/2025 09:18	Abbotsford Road (Mayne Yard)	Construction Monitoring at Sensitive Places	External	SCAS Civil and Track Works	Construction Noise	70	64.1	60	60.7	Yes
10.	27/12/2025 09:09	Mill Street (Mayne Yard)	Construction Monitoring at Sensitive Places	External	SCAS Civil Works	Construction Noise	70	72.3	60	70.9	Yes

[1] Intermittent noise goal (LA10)

[2] Continuous noise goal (LAeq)

2.2 Vibration Monitoring

Vibration requirements (levels) are defined as goals within Imposed Condition 11. The goals are to be aimed for. The Coordinator-General's Change Report acknowledges instances where these goals may not be achieved. Vibration monitoring was not triggered during the reporting period.

2.3 Air Quality

Air quality requirements (levels) are defined as goals within Imposed Condition 13. The goals are to be aimed for. The Coordinator-General's Change Report acknowledges instances that exist when these goals may not be achieved.

Visual monitoring was undertaken during routine environmental inspections. A total of 17 inspections were undertaken by the Environment Team throughout the reporting period across Mayne Yard, Northern Corridor, Southern Area, Clapham Yard, Dutton Park and Salisbury stations.

UNITY undertakes air quality monitoring using dust deposition gauges (DDGs), Total Suspended Particles (TSP) and particulate matter less than 10µm (PM10). TSP and PM10 are monitored using portable air quality units.

Air quality monitoring results are provided below.

2.3.1 Deposited Dust Results

Passive dust deposition gauge (DDG) samples are analysed monthly.

The dust deposition gauge results (and total rainfall) for the reporting period are detailed below.

Table 2: Air Quality Monitoring - Deposited Dust Data

CGCR Goal (mg/m ² /day)	AQ-04 Grafton Street (Mayne Yard) (mg/m ² /day)	AQ-06 Clapham Yard (mg/m ² /day)	AQ-09 Yeerongpilly Station (mg/m ² /day)	AQ-10 Northern Portal (mg/m ² /day)	AQ-11 Dutton Park (mg/m ² /day)	AQ-12 Salisbury, Lillian Avenue (mg/m ² /day)	AQ-13 Salisbury, Fairlie Terrace (mg/m ² /day)
120	27	40	27	[1]	73	47	40
Total Rainfall (mm)	68.3	187.2	187.2		86.6	96.6	96.6

[1] The DDG apparatus at the Northern Portal was decommissioned in December 2025 following construction works completion and demobilisation on 03 November 2025.

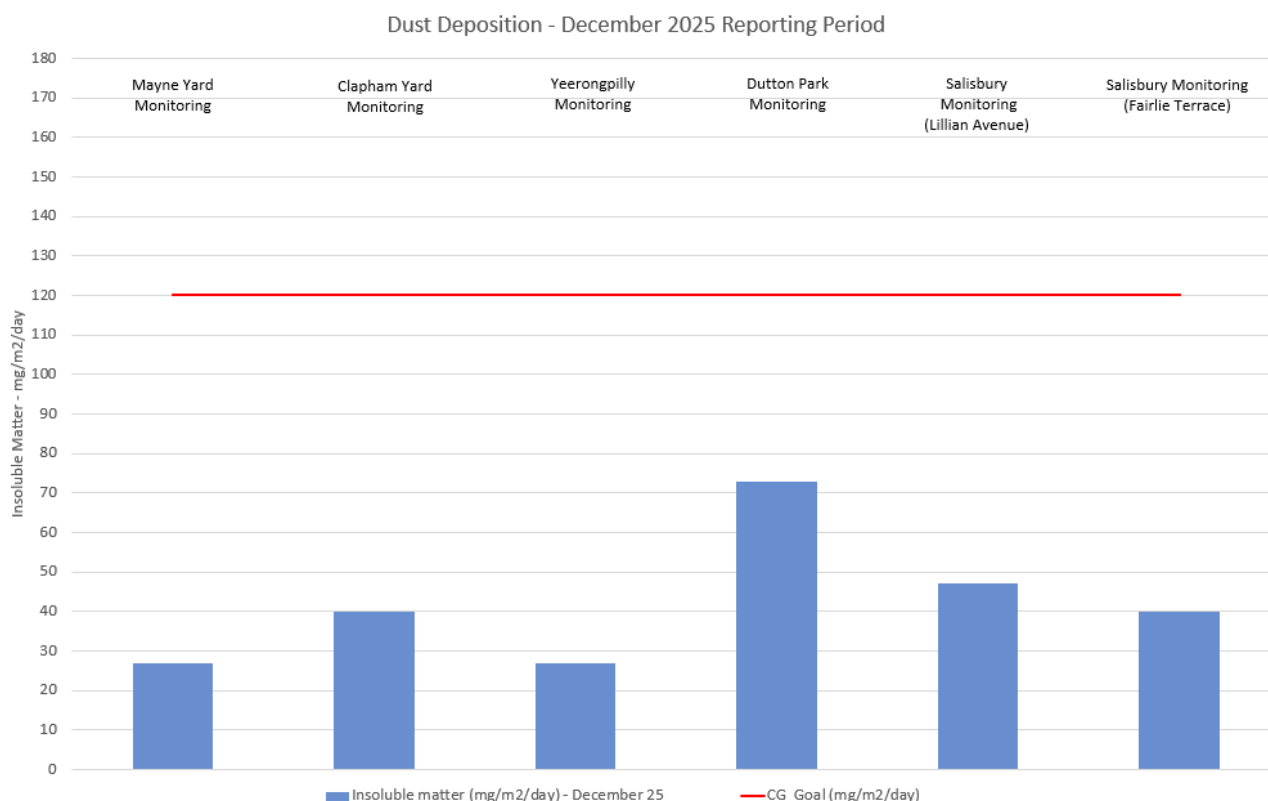


Figure 1: Air Quality Monitoring - Deposited Dust Data

2.3.2 Ambient Air Quality Results

TSP and PM10 monitoring were conducted during December 2025. Targeted monitoring of potential dust-generating activities is conducted by the mobile air quality units and was completed at the Mayne Yard and Clapham Yard worksites during December 2025. No exceedances were recorded during this reporting period.

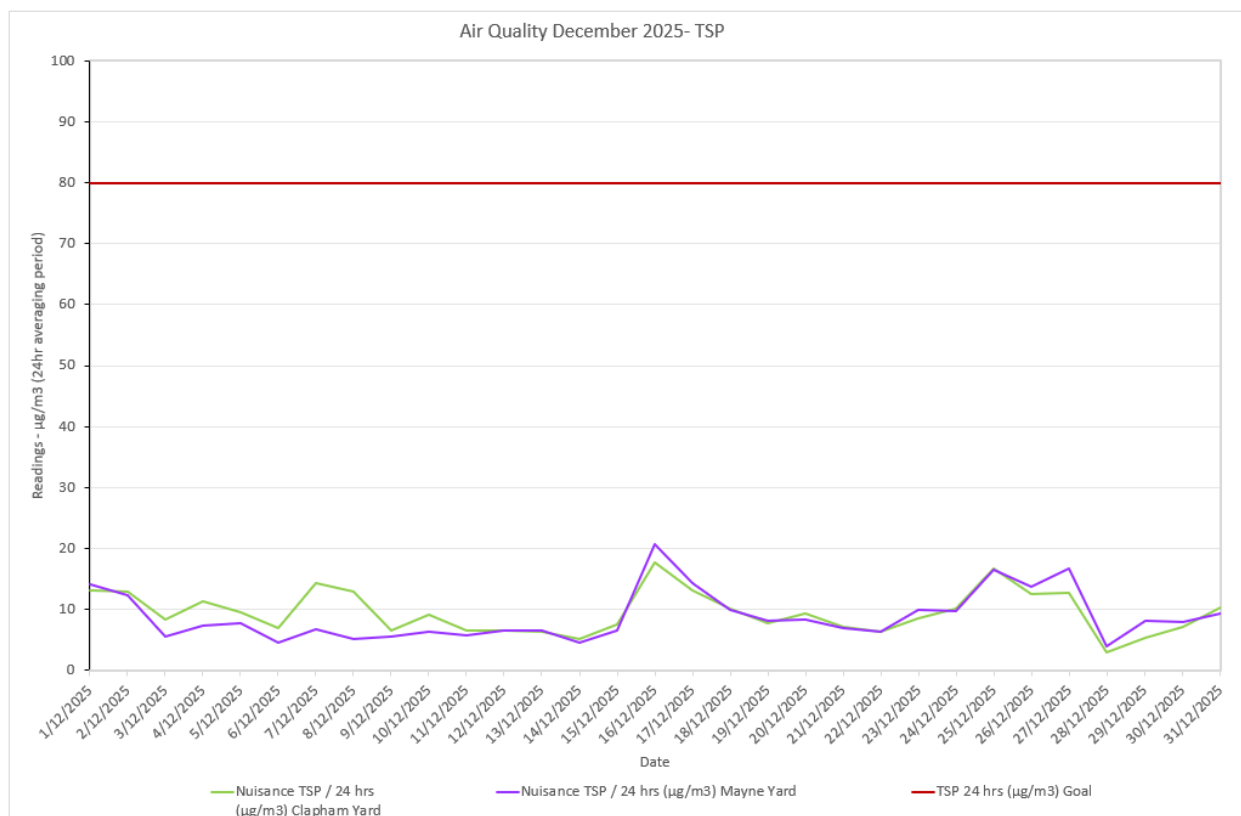


Figure 2: Air Quality Monitoring – Total Suspended Particles Data

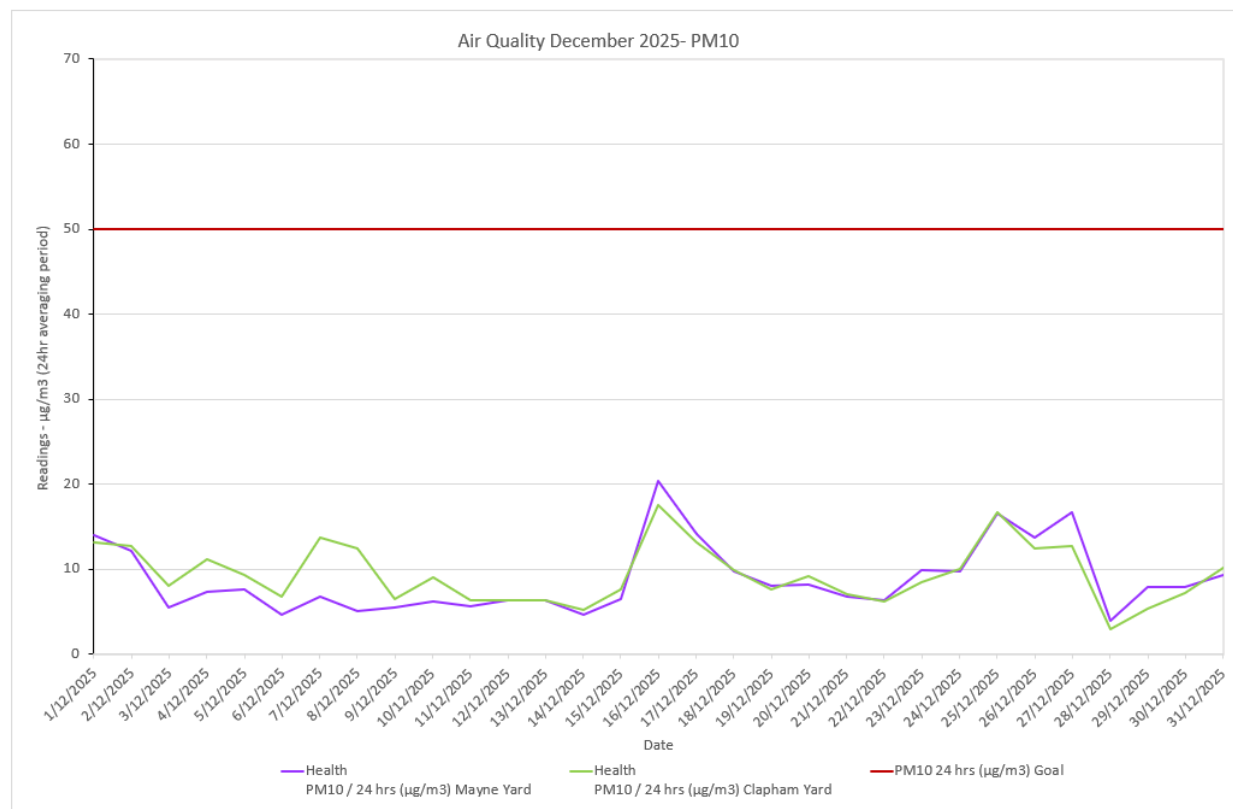


Figure 3: Air Quality Monitoring - PM10 Data

2.4 Water Quality

Imposed Condition 15(b) requires that during construction, monitoring, and reporting on water quality in accordance with the Water Quality Management Plan, a sub-plan of the C-EMP, occurs.

Imposed Condition 15(a) requires that discharges of groundwater from Project Works within the Breakfast Creek catchment must comply with the Brisbane River Estuary environmental values and water quality objectives (Basin no.143 – mid-estuary) in the *Environment Protection (Water) Policy 2009*.

Imposed Condition 15(a) requires that discharges of groundwater from Project Works within Moolabin Creek, Yeerongpilly – Oxley Creek catchment must comply with the Oxley Creek - Lowland freshwater environmental values and water quality objectives (Basin no.143 (part) – including all tributaries of the Creek) in the *Environment Protection (Water) Policy 2009*.

Qualitative surface water monitoring was conducted on 8 and 15 December 2025 and supported by quantitative monitoring (e.g. water sampling) on 8 December 2025, in line with post-rainfall monitoring requirements. Monitoring confirmed no impacts were generated by the Project.

The Project Christmas festive period shutdown was in place from 20 December 2025 until Project-wide works resumed on 5 January 2026. During this period, Scheduled Corridor Access System (SCAS) works were conducted at Mayne Yard from 20 to 28 December 2025.

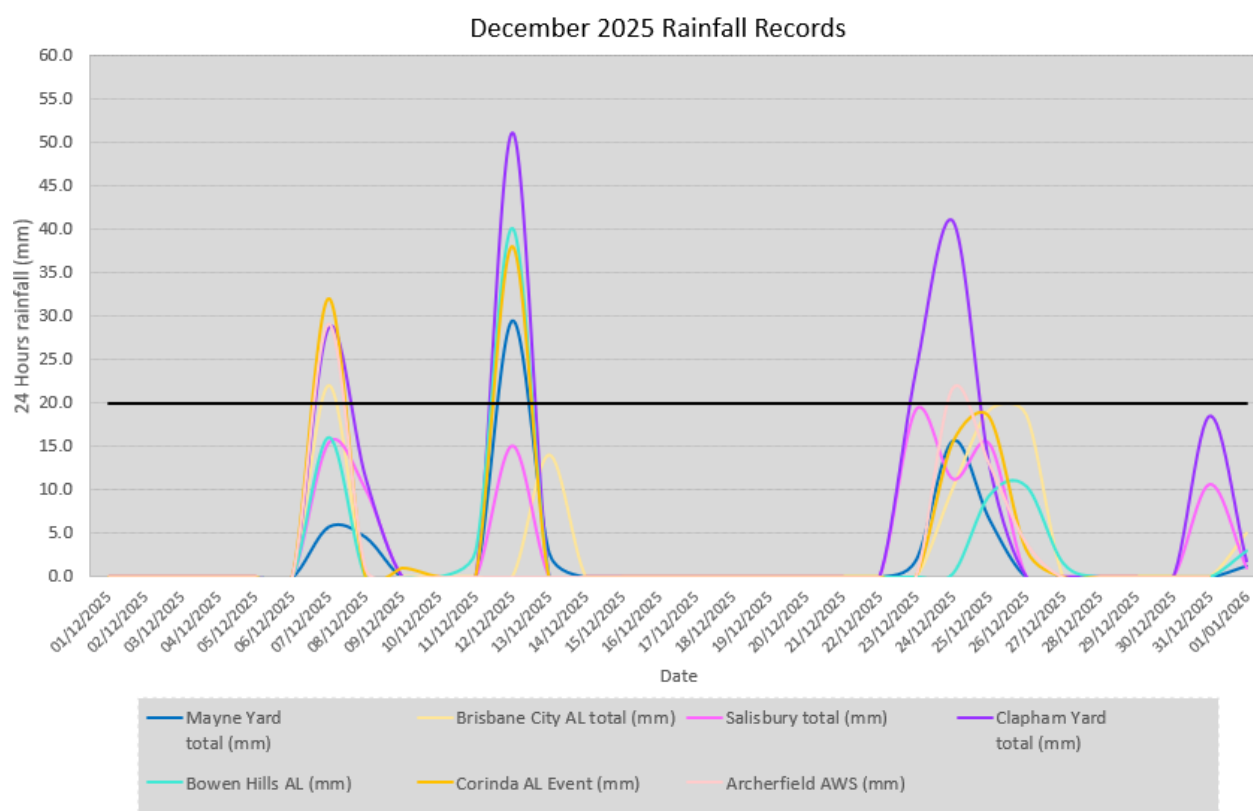


Figure 4: Rainfall Data

2.4.1 Water Quality – Post Rainfall Monitoring

Table 3: Post Rainfall Water Quality Monitoring Data

Date	Location	Waterway	Tide	Turbidity (NTU)	TSS (mg/L)	DO (%)	pH (pH unit)
08/12/2025	SW-5 (Upstream rail corridor)	Moolabin Creek	Not applicable (non-tidal environment)	14	6	94.9	7.2
08/12/2025	SW-6 (Downstream of rail corridor)	Moolabin Creek	Not applicable (non-tidal environment)	20.7	16	74	7.04
08/12/2025	SW-7 (Upstream of rail corridor)	Rocky Waterholes Creek	Not applicable (non-tidal environment)	16.9	9	88	7.01
08/12/2025	SW-8 (Downstream of rail corridor)	Rocky Waterholes Creek	Not applicable (non-tidal environment)	20.4	12	66	6.93
08/12/2025	SW-9 (Downstream of rail corridor)	Stable Swamp Creek	Not applicable (non-tidal environment)	12.8	6	88.7	7.34
08/12/2025	SW-9A (Upstream of rail corridor)	Stable Swamp Creek	Not applicable (non-tidal environment)	13.1	11	95	7.05

2.4.2 Water Quality – Routine Monitoring (Bi-annual)

Requirements related to routine surface water quality monitoring and reporting were met with bi-annual water sampling completed on 23 January and 17 July 2025.

2.4.3 Groundwater Discharge Monitoring Results

Groundwater discharge monitoring was not triggered during the reporting period.

2.4.4 Surface Water Discharge Monitoring

Surface water discharge monitoring was not triggered during the reporting period.

3 Compliance review

3.1 Non-Compliance Events

The below section summarises the events to be reported in accordance with Imposed Condition 5 and Imposed Condition 6(b)(ii). A Non-Compliance event (NCE) is defined as Project works that do not comply with the Imposed Conditions. NIL non-compliances occurred during the reporting period.

Table 4: Summary of Non-Compliance Events

Event Title	Location, Date, and time of event	Date the Event was Formally Notified to CG/IEM	Conditions Affected	Date the Event Report Formally Sent to CG/IEM	Status of Event
NA	-	-	-	-	-

4 Complaints

Reporting of complaints is provided in accordance with Imposed Condition 6(b)(iii).

During December 2025, no complaints were received related to UNITY Project works.

Attachment 1 Monitoring Locations – Noise

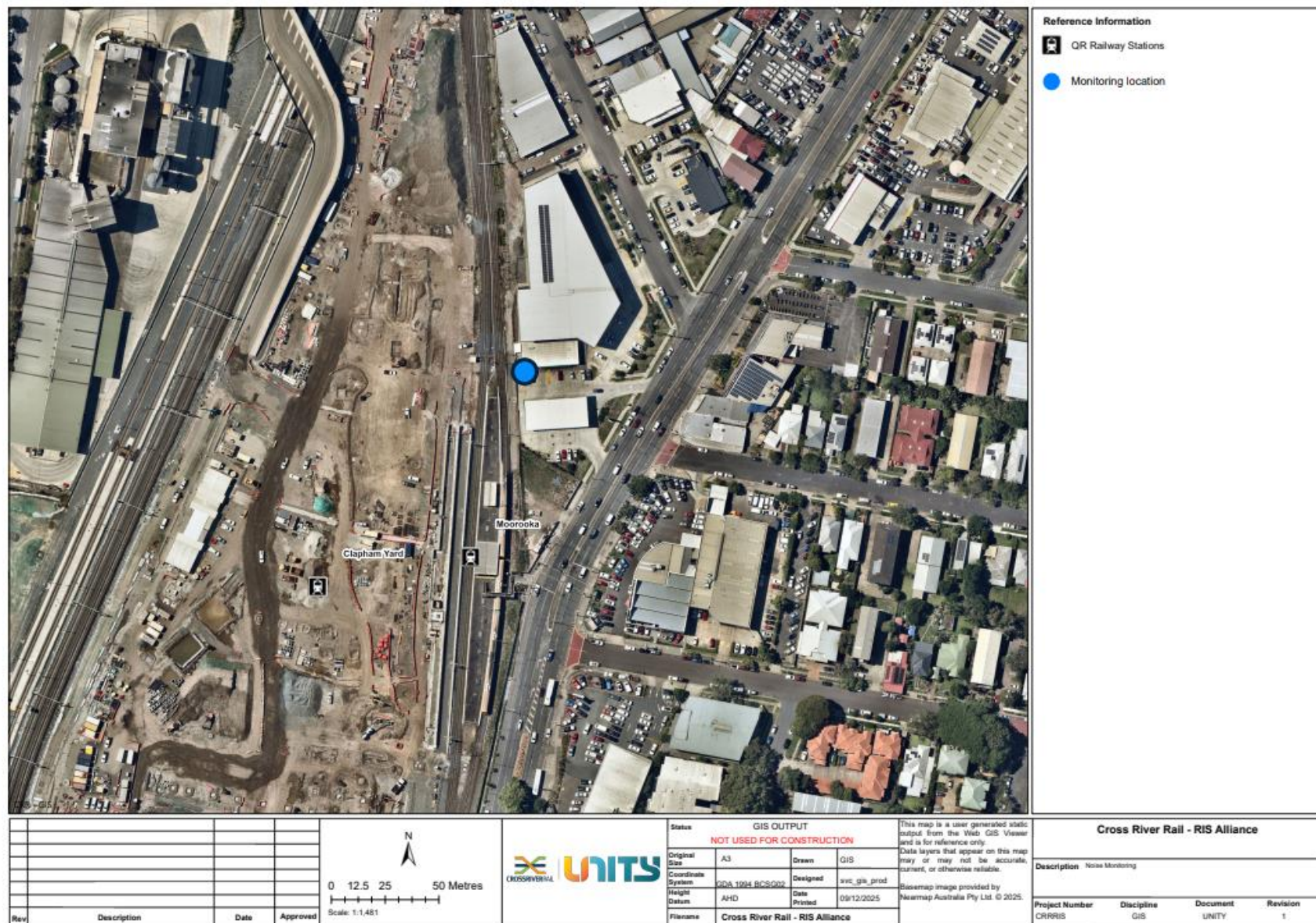


Figure 5: Clapham Yard Noise Monitoring Location



Figure 6: Salisbury Noise Monitoring Location

CROSS RIVER RAIL | Rail, Integration and Systems Alliance

RIS-UNA-ENV-MRP-06610-046 – Rev 01| Monthly CGCR Report – December 2025

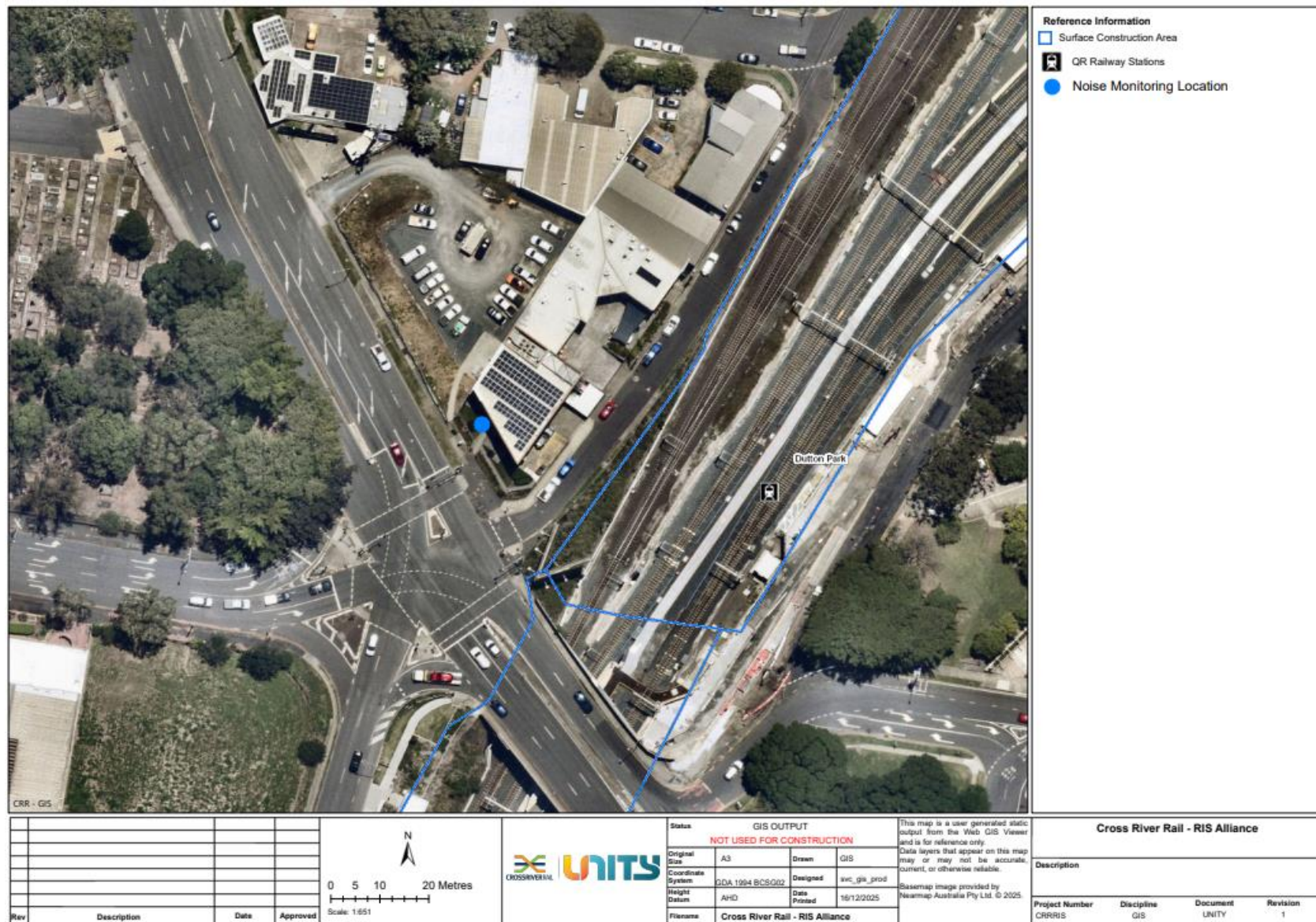


Figure 7: Dutton Park Noise Monitoring Location

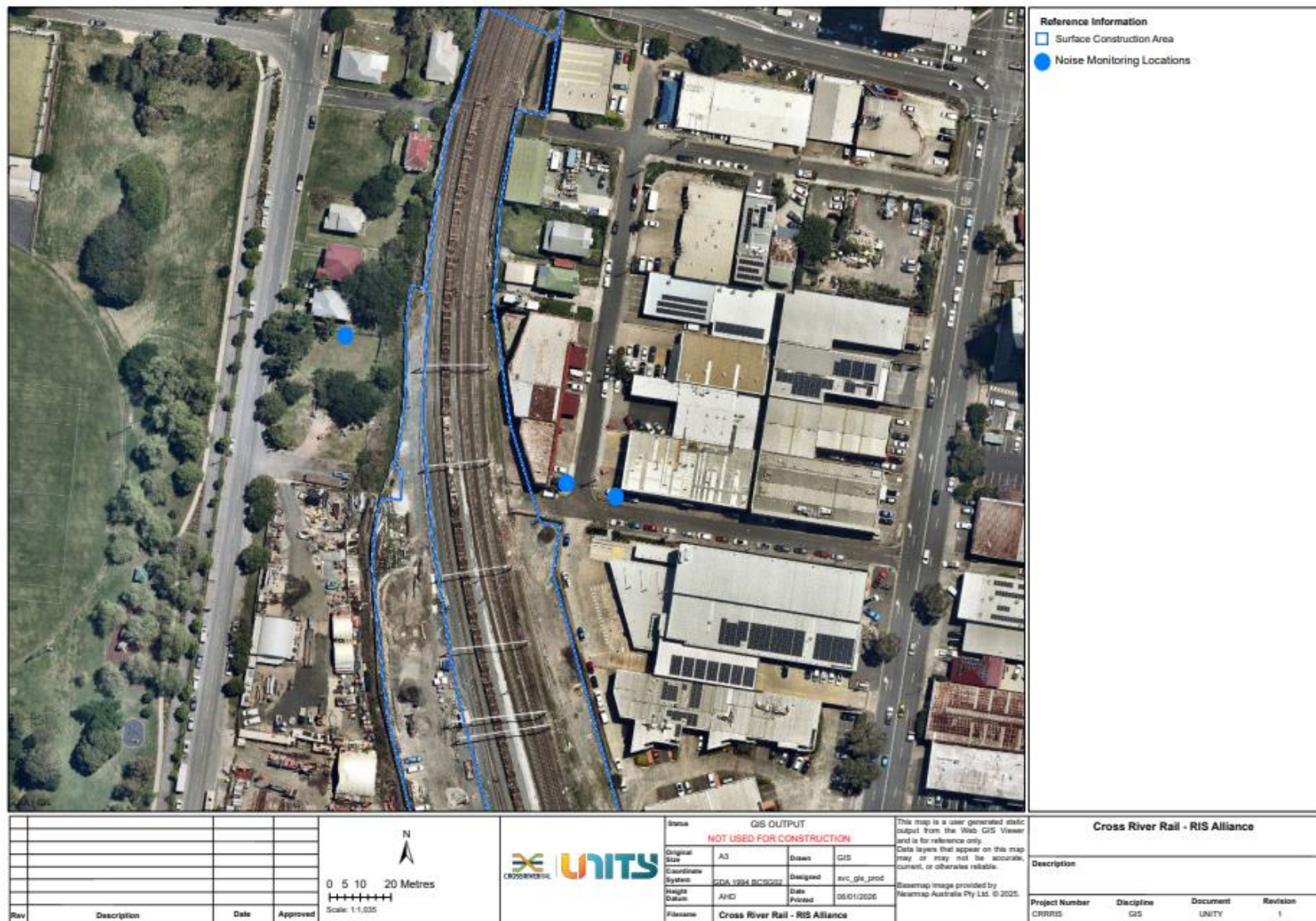


Figure 8: Mayne Yard Noise Monitoring Locations

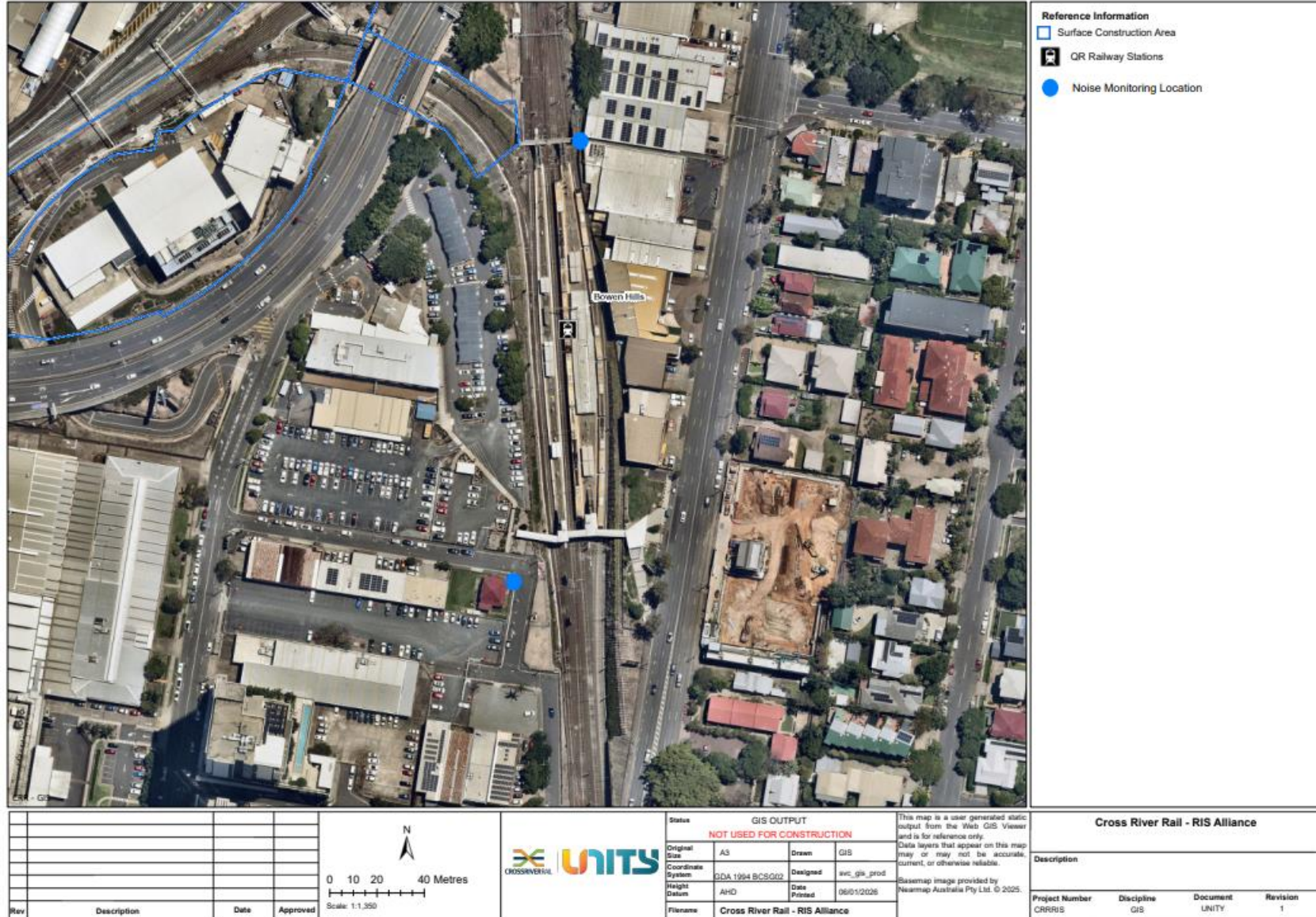


Figure 9: Mayne Yard Noise Monitoring Locations

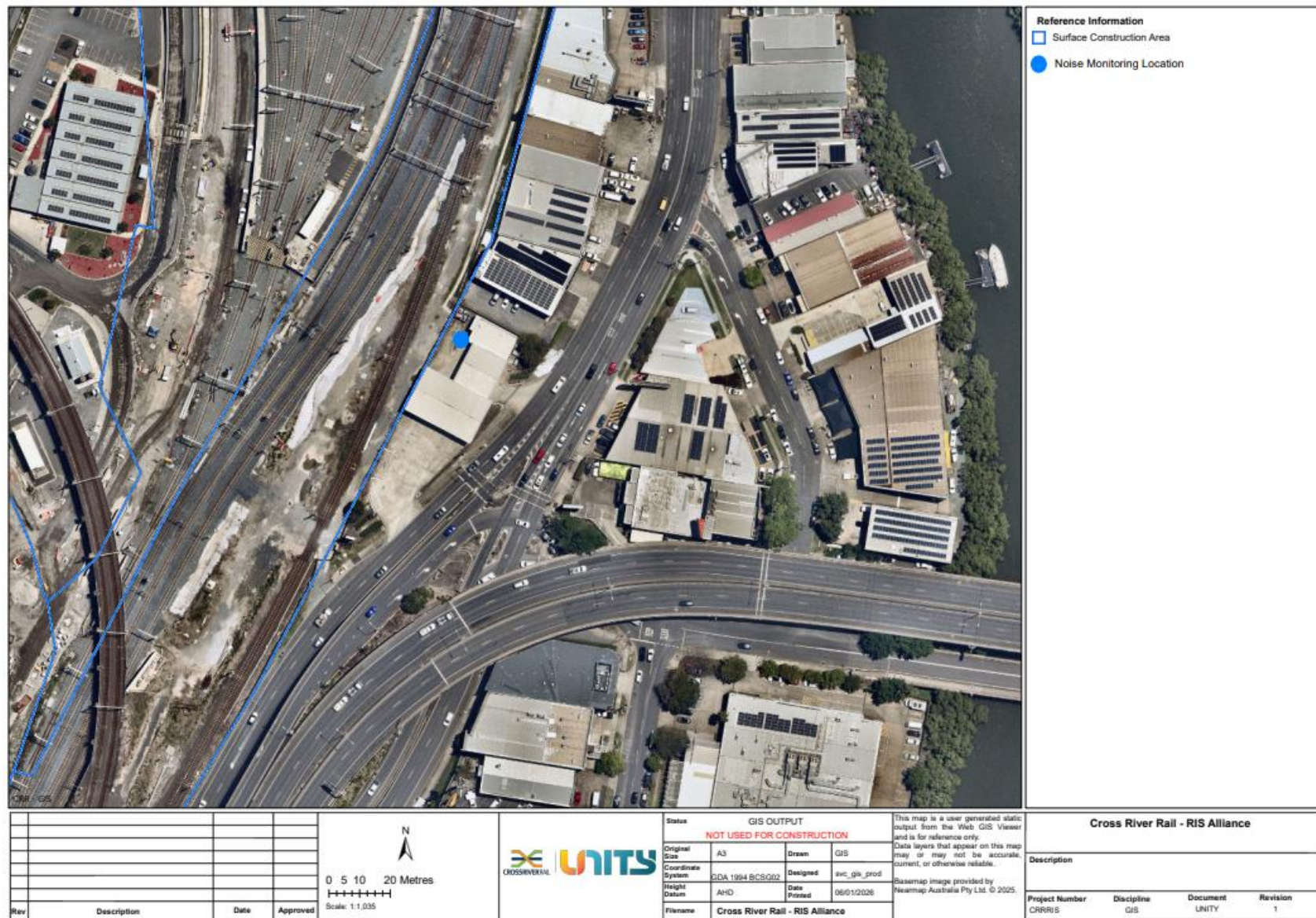


Figure 10: Mayne Yard Noise Monitoring Location

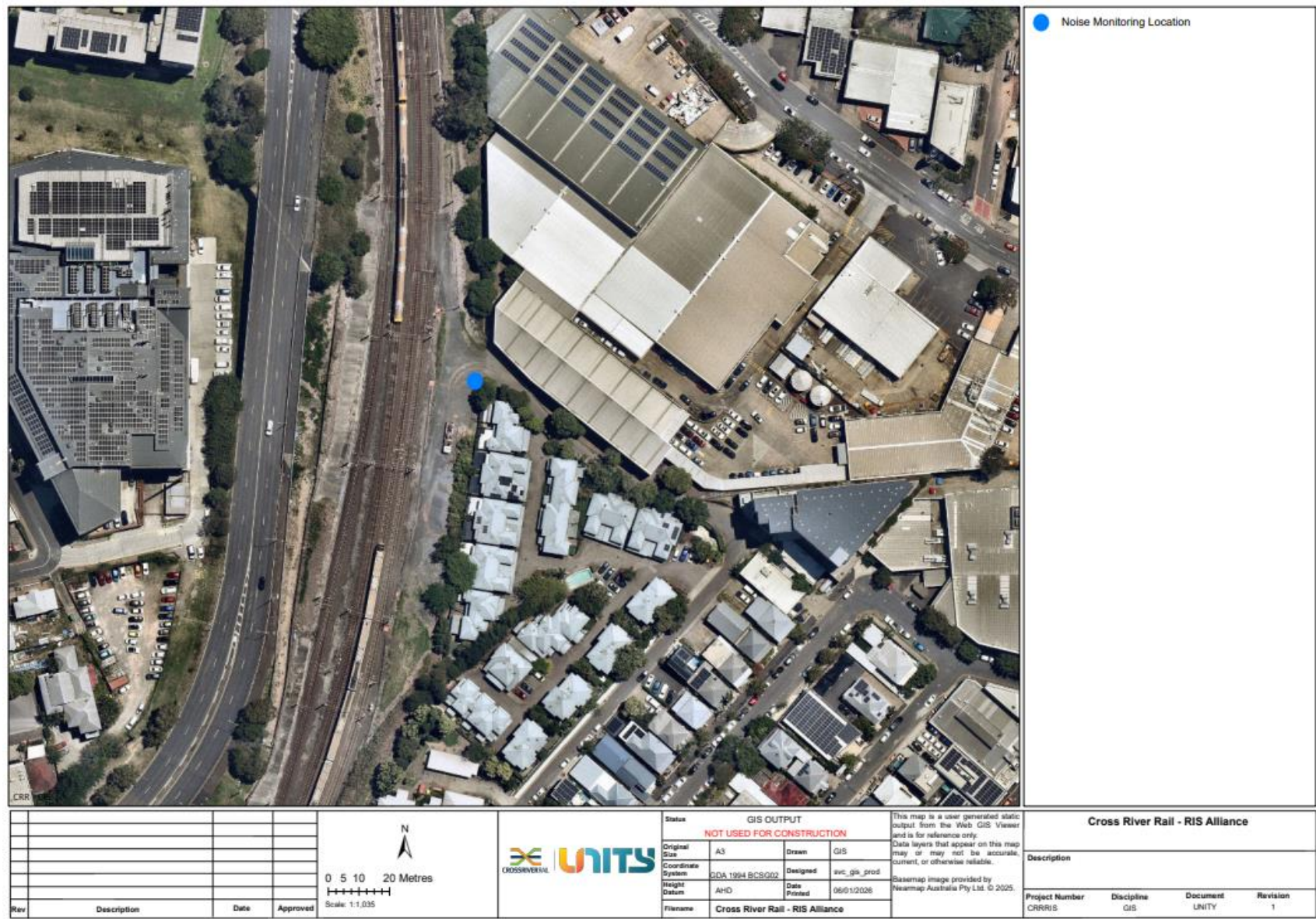


Figure 11: Mayne Yard Noise Monitoring Location

CROSS RIVER RAIL | Rail, Integration and Systems Alliance

RIS-UNA-ENV-MRP-06610-046 – Rev 01| Monthly CGCR Report – December 2025

Attachment 2 Monitoring Locations - Vibration

Vibration monitoring was not triggered during December 2025.

Attachment 3 Monitoring Locations - Air Quality

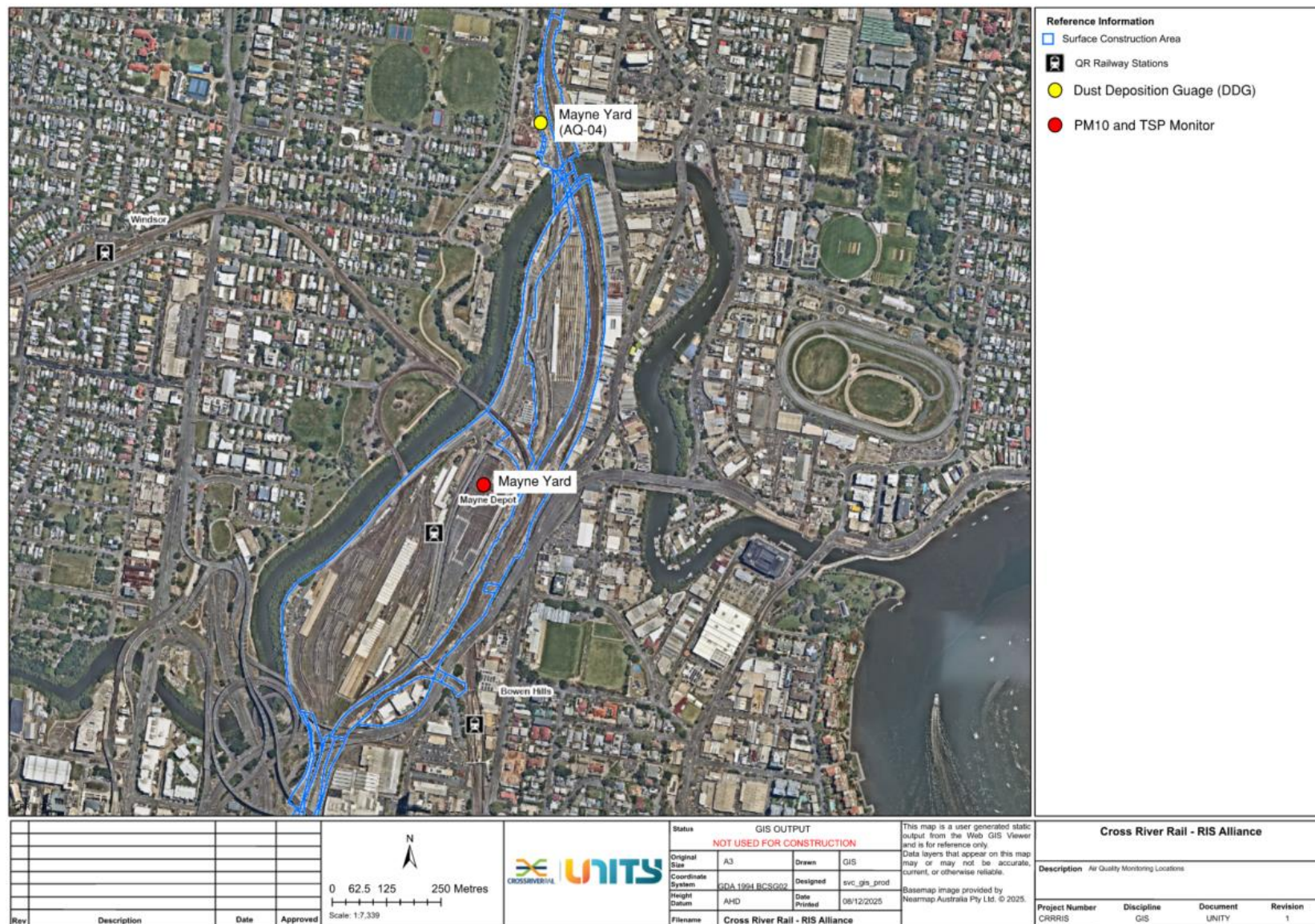


Figure 12: Mayne Yard AQ locations

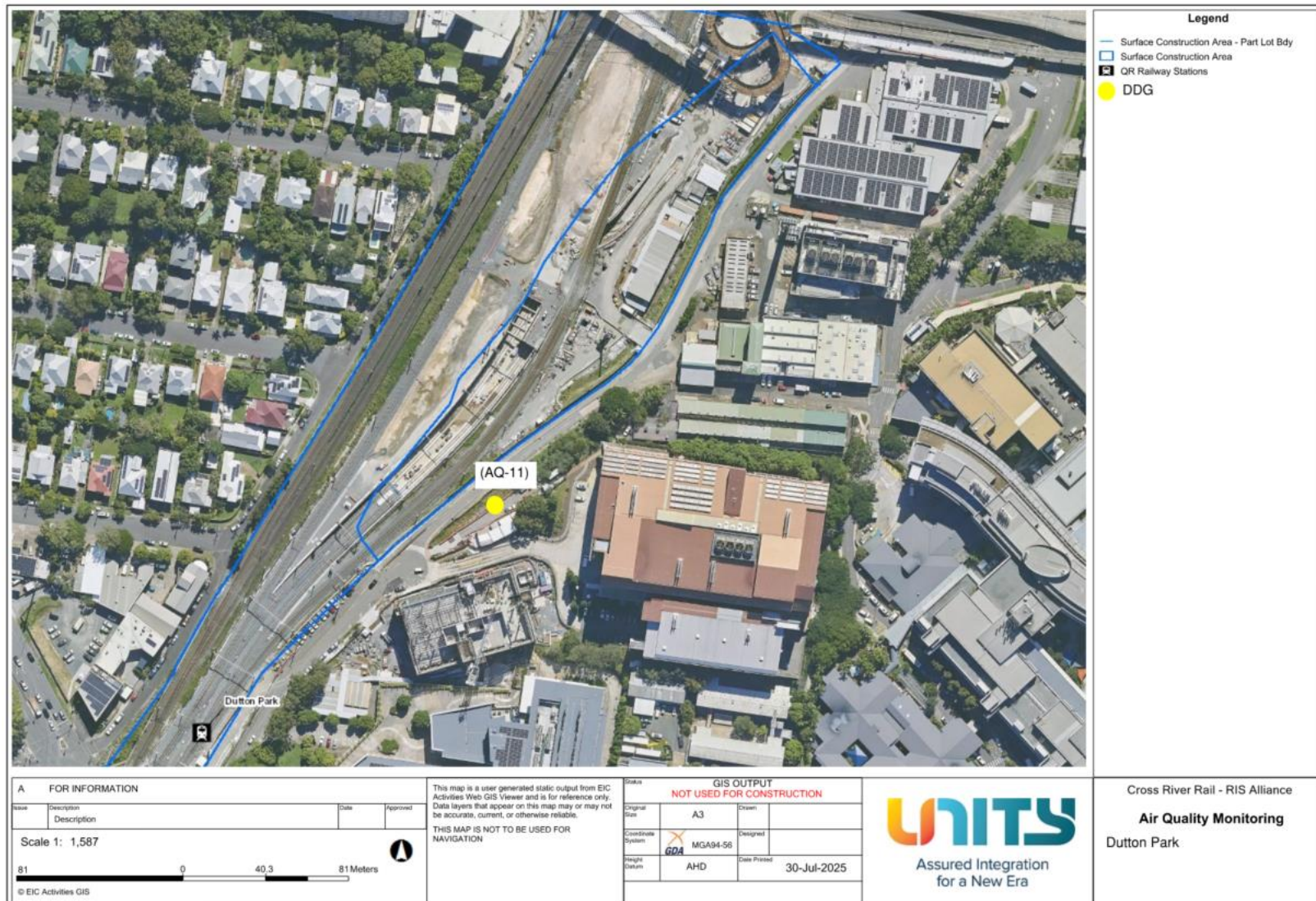


Figure 13: Southern Area AQ location

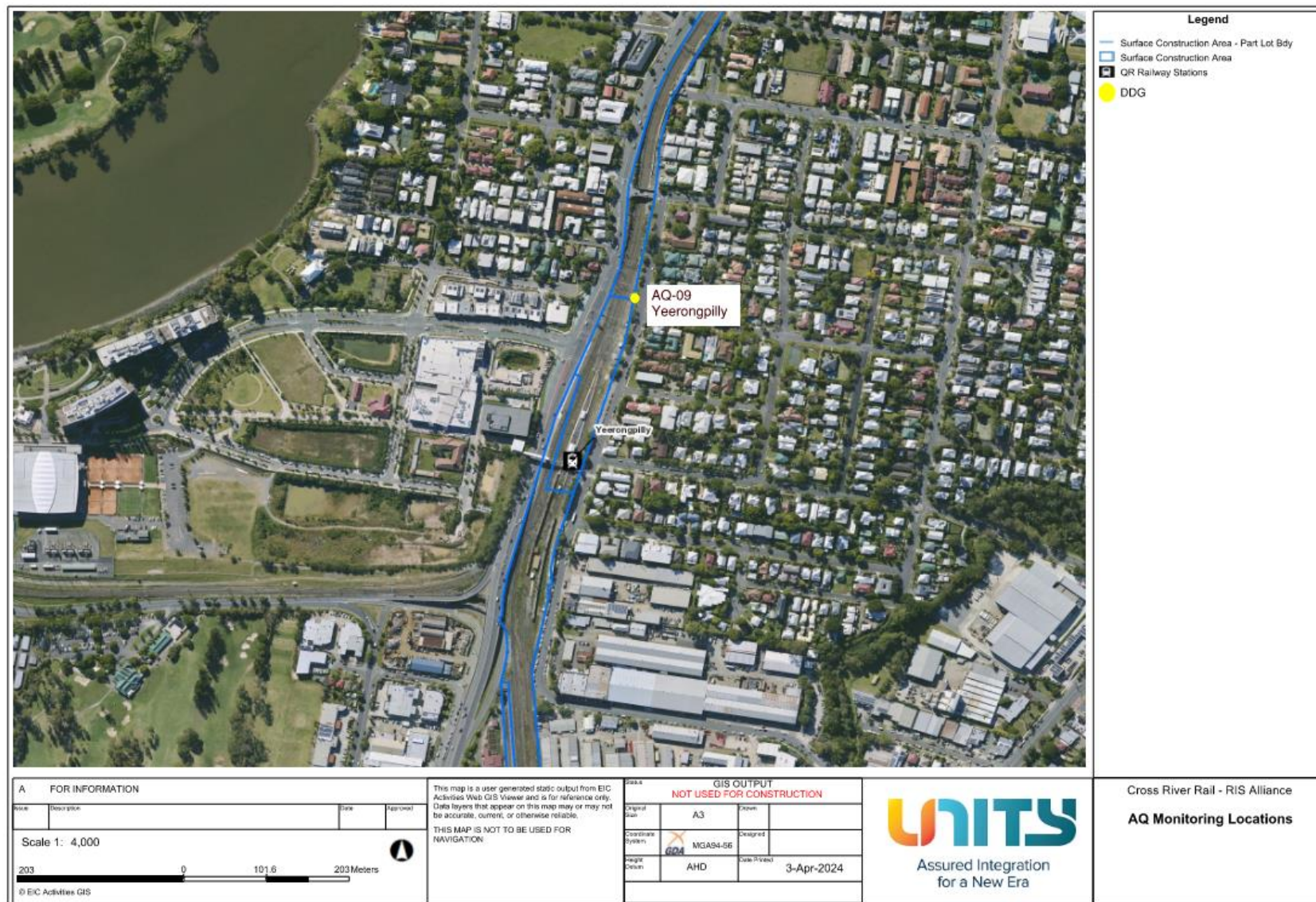


Figure 14: Yeerongpilly AQ location

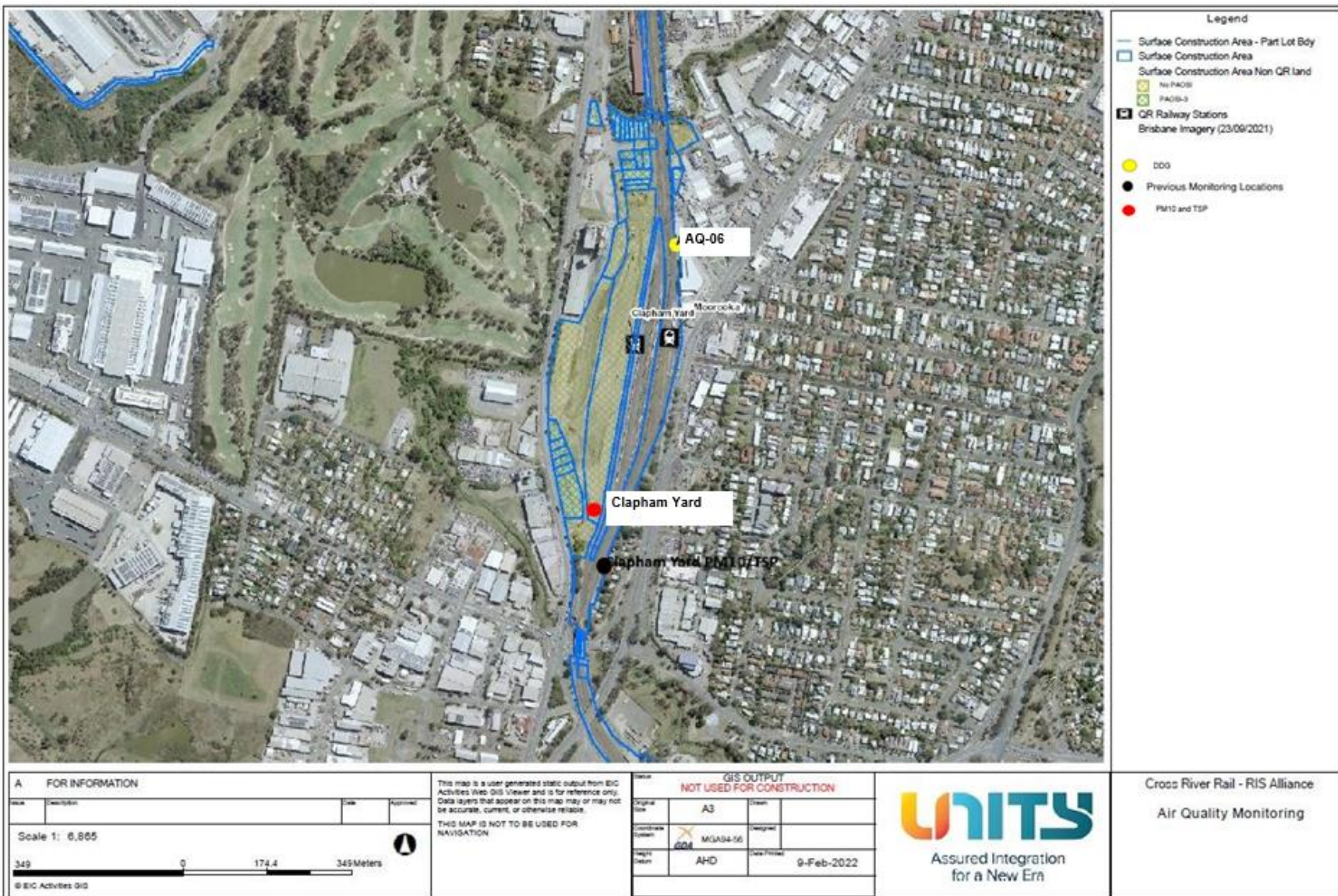


Figure 15: Clapham Yard AQ locations

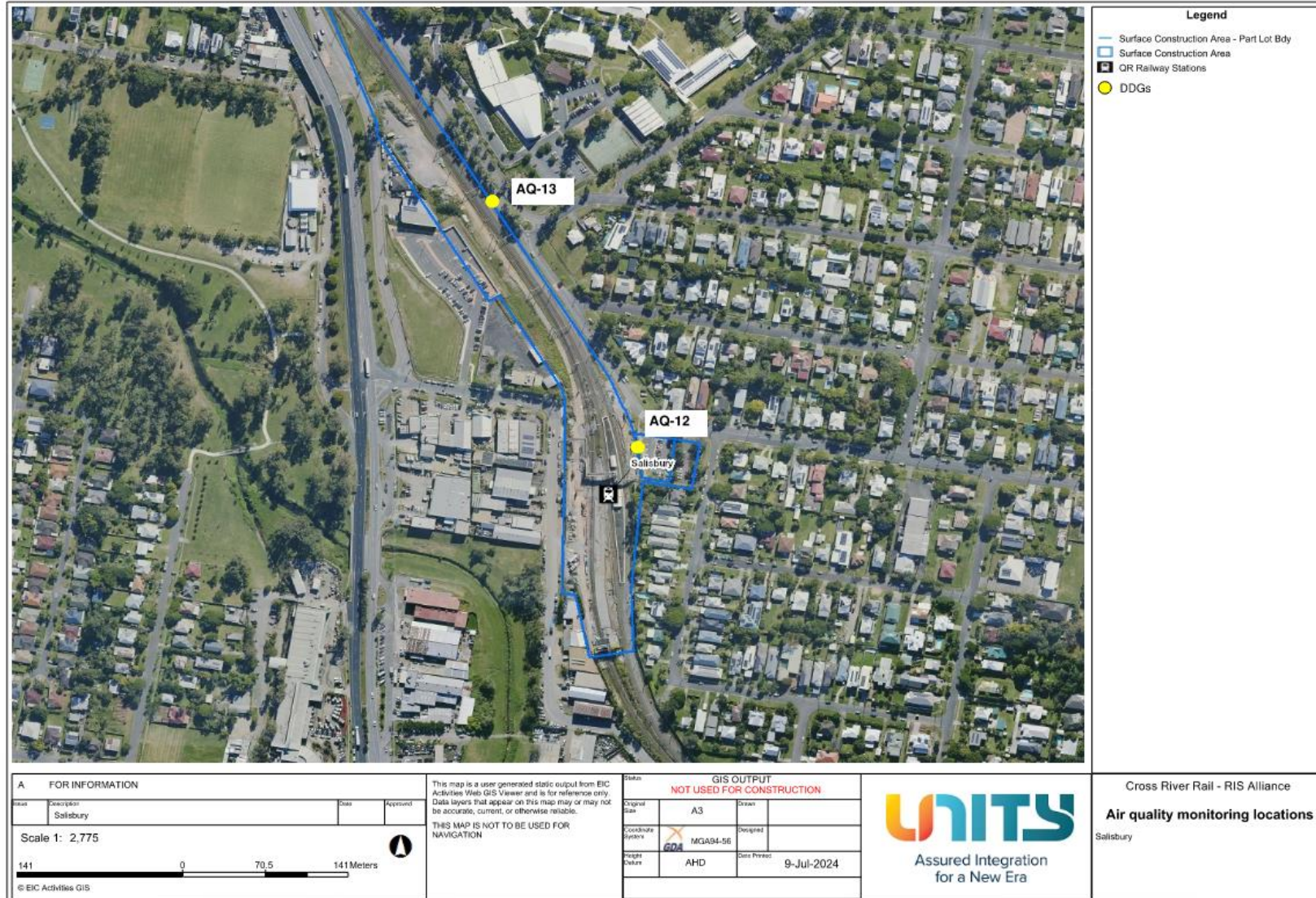


Figure 16: Salisbury AQ locations

Attachment 4 Monitoring Locations – Surface Water

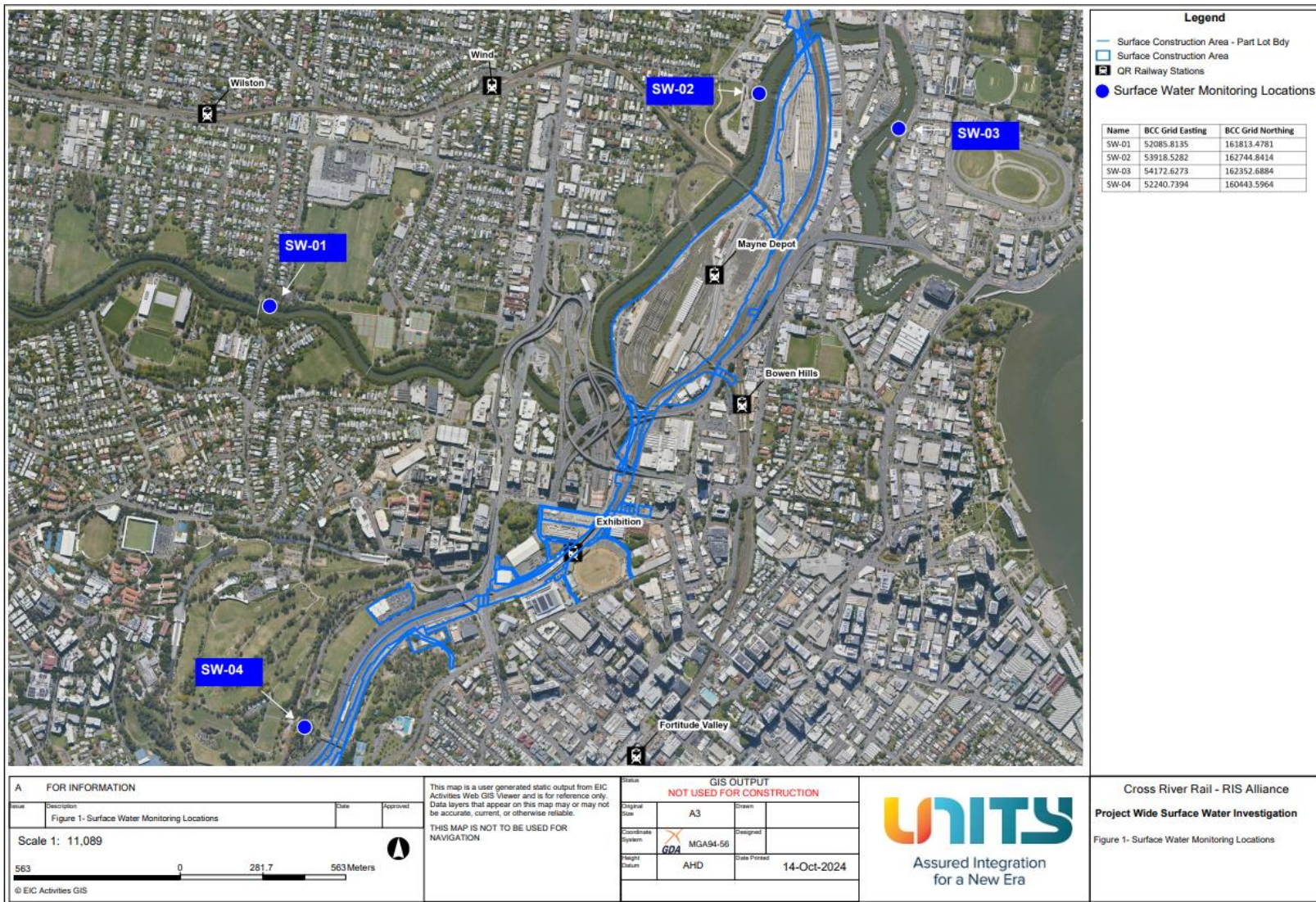


Figure 17: Northern WQ Locations

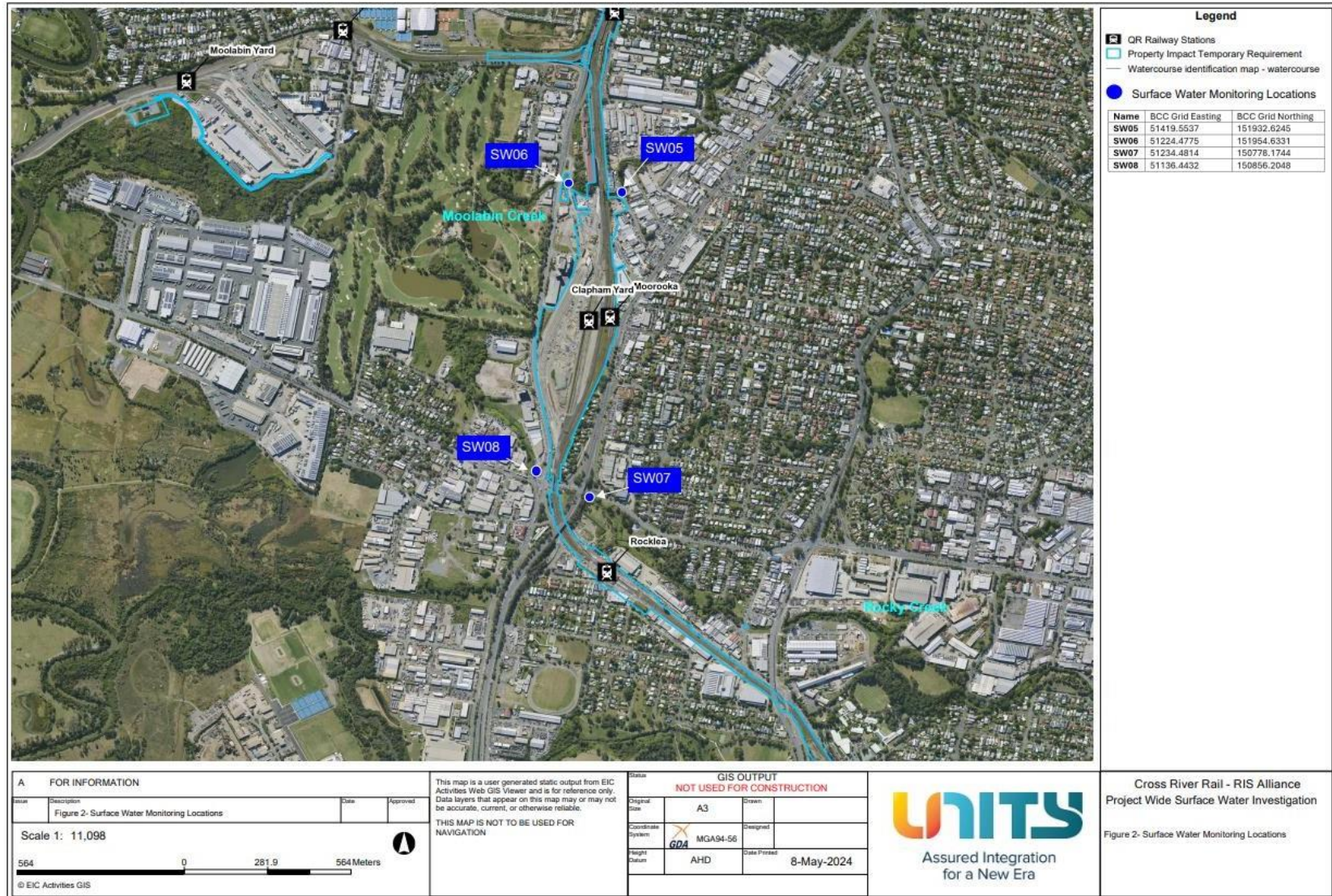


Figure 18: Southern WQ Locations

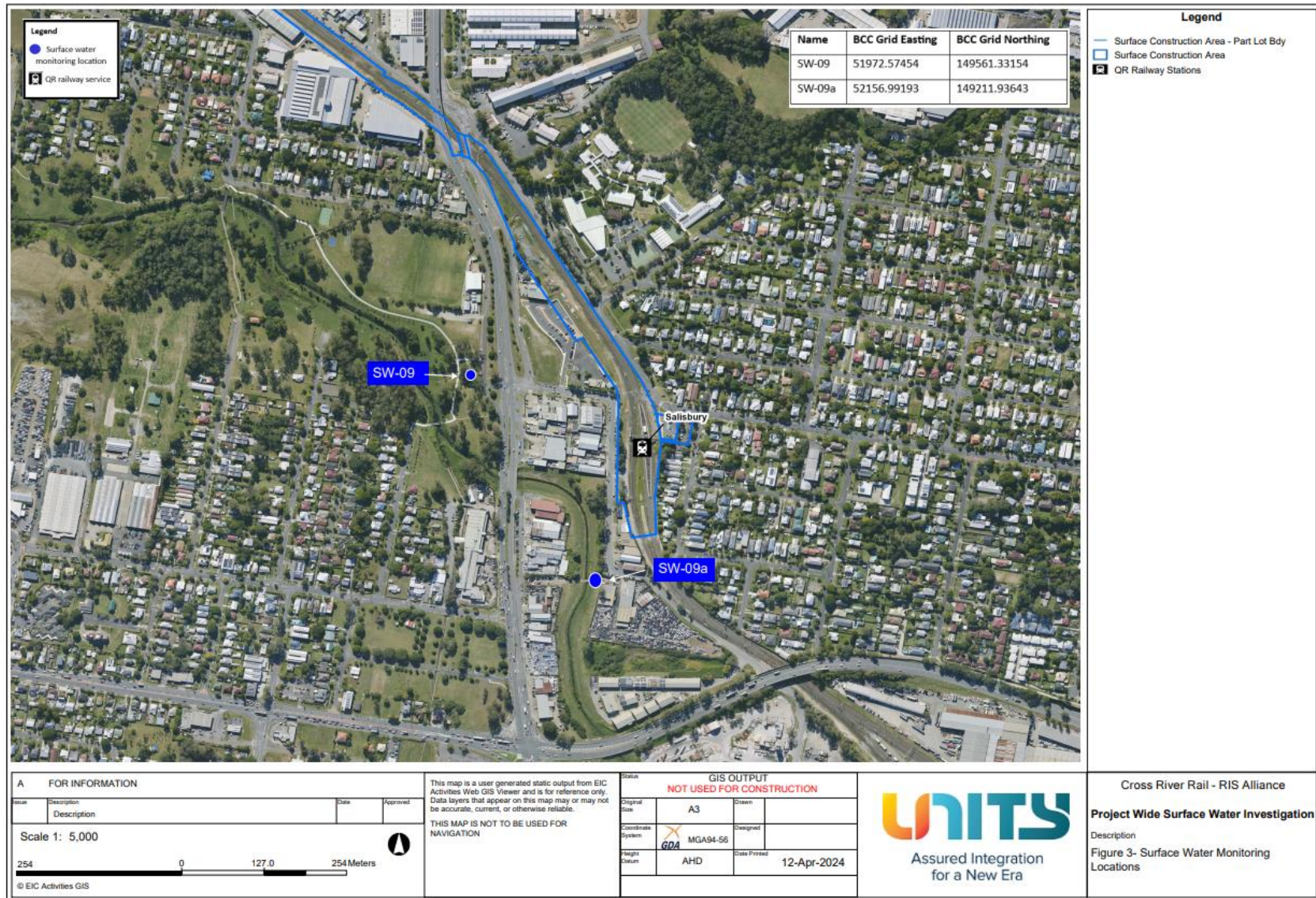


Figure 19: Southern WQ Locations

Appendix B TSD Monthly Report

This document is the property of the Cross River Rail Delivery Authority. It may not be copied or reproduced without permission.

COORDINATOR-GENERAL'S MONTHLY REPORT: DECEMBER 2025

Prepared in accordance with Coordinator-General Imposed Condition 6 - Reporting.

1. Monthly Monitoring Summary

It is CBGU Joint Venture's intent to aim for the Goals and Objectives relevant to vibration, noise, air quality and water monitoring within the practical extent of delivering the Project.

Vibration monitoring was not triggered in December 2025. Noise monitoring was performed on seven (7) occasions in December 2025. Each monitoring event that was undertaken confirmed that works adhered to the project requirements.

Ambient air quality monitoring was conducted at Roma Street, Albert Street, Woolloongabba, Boggo Road, and the Southern Portal precinct sites in December 2025. Air quality monitoring confirmed that works adhered to Project requirements.

Water quality monitoring was conducted before the release of water from the site on five (5) occasions. Each monitoring event confirmed that the Project requirements were adhered to. One (1) round of surface water quality monitoring was conducted. The monitoring event confirmed that the Project had no impacts.

2. Coordinator-General's Monthly Report – Compliance Assessment Against Imposed Conditions

Whilst not a requirement of Imposed Condition 6, CBGU offers the below Compliance Status Table as a goodwill gesture to demonstrate the Project's ongoing environmental performance.

Table 1: Compliance Status – CG Imposed Conditions

CG Condition	Requirement Summary	Compliance Met (Yes/No/NA)	Comment
1.	General Conditions – compliance with the Project Changes relevant to the Contractor's scope.	Yes	CBGU Project works have been conducted in compliance with the Imposed Conditions.
2.	Outline Environmental Management Plan – timely submission to the Coordinator-General, including required sub-plans.	N/A	The OEMP is not an obligation of the CBGU Joint Venture.
3.	Design – the achievement of the Environmental Design Requirements.	Yes	Design and implementation proceeded in accordance with the Environmental Design Requirements.
4.	Construction Environmental Management Plan – all relating to Relevant Project Works.	Yes	All CBGU works were conducted in accordance with the Construction Environmental Management Plan (CEMP) (Rev 12).
5.	Compliance and Incident Management – Non-compliance events, notifications, and reporting.	Yes	Nil non-compliances occurred during the monitoring period (refer to Section 4).
6.	Reporting – Monthly and Annual reporting.	Yes	All reporting requirements are completed in accordance with Imposed Condition 6.
7.	Environmental Monitor – engaged and functions resumed.	Yes	An Environmental Monitor (EM) is appointed to the Project, and CBGU is committed to working collaboratively to aid the EM's functions under Imposed Condition 7.
8.	Community Relations Monitor – engaged and functions resumed.	Yes	A Community Relations Monitor (CRM) is appointed to the Project, and CBGU is committed to working collaboratively to aid the CRM's functions under Imposed Condition 8.
9.	Community Engagement Plan – developed and endorsed by Environmental Monitor.	Yes	A Community Engagement Plan (CEP) has been developed and implemented in accordance with Imposed Condition 9. The CEMP has been endorsed with the CEP.
10.	Hours of Work – works undertaken during approved hours.	Yes	CBGU Project works have been conducted in accordance with the approved hours of work.

CG Condition	Requirement Summary	Compliance Met (Yes/No/NA)	Comment
11.	Noise – Work must aim to achieve internal noise goals for human health and well-being.	Yes	CBGU Project work has aimed to achieve internal noise goals for human health and well-being. Where internal noise levels have been unable to be measured, suitable noise reductions have been applied in accordance with Imposed Condition 11. Noise monitoring data is provided within Section 3.2.
	Vibration – Works must aim to achieve vibration goals for cosmetic damage, human comfort and sensitive building contents.	Yes	CBGU Project work has aimed to achieve vibration goals for cosmetic damage, human comfort and sensitive buildings. Vibration monitoring data is provided within Section 3.1.
12.	Property Damage relating to ground movement	Yes	The management of potential impacts relating to property damage has been completed in accordance with Imposed Condition 12.
13.	Air Quality – Works must aim to achieve air quality goals for human health and nuisance.	Yes	CBGU Project works have aimed to achieve air quality goals. Air quality monitoring data is provided within Section 3.
14.	Traffic and Transport – Works must minimise adverse impacts on road safety and traffic flow.	Yes	CBGU Project works have been conducted in a manner that has minimised adverse impacts on road safety and traffic flow.
15.	Water Quality – Works must not discharge surface water and groundwater from the construction site above the relevant environmental values and water quality objectives.	Yes	CBGU has prepared and managed processes to ensure water quality is managed in accordance with Imposed Condition 15.
16.	Water Resources – evaluate potential impact, plan works, implement controls and monitor the inflow of groundwater associated with drawdown.	Yes	CBGU Project works are managed in accordance with Imposed Condition 16.
17.	Surface Water – Must be designed to avoid inundation from stormwater due to a 2-year (6hr) ARI rainfall event and flood waters due to a 5-year ARI rainfall event and constructed to avoid afflux or cause the redirection of uncontrolled surface water flows, including stormwater flows, outside of worksites.	Yes	Design of the CBGU Project works considers the requirements of Imposed Condition 17.
18.	Erosion and Sediment Control – Provisions for erosion and sediment control must be consistent with the Guidelines for Best Practice Erosion and Sediment Control (International Erosion Control Association, 2008) and the Department of Transport and Main Roads' Technical	Yes	CBGU has prepared and managed processes to ensure erosion & sediment control is managed in accordance with Imposed Condition 18.

	Standard MRTS52.		
19.	Acid Sulfate Soils managed as per the <i>Queensland Acid Sulfate Soil Technical Manual</i> .	Yes	CBGU has prepared and managed processes to ensure acid sulfate soils are managed in accordance with Imposed Condition 19.
20.	Landscape and Open Space – general requirement to minimise impacts on landscapes and open space values and specific requirements around Victoria Park	Yes	CBGU Project works are designed and implemented in accordance with Condition 20.
21.	Worksite Rehabilitation – worksites rehabilitated as soon as practicable upon completion of works or commissioning, and in consultation with Brisbane City Council.	Yes	CBGU Project works are designed and implemented in accordance with Condition 21.
22.	Flood Water – Temporary emission to allow the release of Flood Waters to high flow receiving waters.	Yes	CBGU Project works have been conducted in accordance with the provisions available to manage floodwaters.

3. Environmental Monitoring Results

Monitoring data is provided below in accordance with Imposed Condition 6(b)(i).

3.1 Vibration

Vibration requirements (levels) are defined as goals within Imposed Condition 11. The goals are to be aimed for.

The Coordinator-General's Change Reports acknowledges instances where these goals may not be achieved.

Nil vibration monitoring was conducted during December 2025.

Table 2: Vibration Monitoring Data

No.	Start Date	Time (AM/PM)	Finish Date	Location	Average Vibration level (mm/s)	Max Vibration Level (mm/s)	Vibration Goal (mm/s)	Receiver / Goal Type	Adhered to Project Requirements (Yes / No)
-----	------------	-----------------	-------------	----------	--------------------------------------	-------------------------------	--------------------------	----------------------	--

Nil

3.2 Noise

Noise requirements (levels) are defined as goals within Imposed Condition 11. The goals are to be aimed for.

The Coordinator-General's Change Reports acknowledge instances where these goals may not be achieved. Noise monitoring was conducted on seven (7) occasions during December 2025. Noise monitoring adhered to project requirements and is detailed in the table below

Table 3: Noise Monitoring Data

No.	Date	Time (AM / PM)	Location (Street Name) (Construction Precinct)	Purpose of Monitoring	Internal or External ^[3] Monitoring	Activity	Dominant Noise Source	Noise Goal LA10 ^[1]	Noise level LA10	Noise Goal LAeq ^[2]	Noise level LAeq	Adhered to Project Requirements (Yes / No)
1.	2/12/2025	8:15:00 PM	Albert Street (Albert Street Precinct)	Model Verification	External	Road and Utilities Works	Demolition and Utilities works	67	76.2	57	72.8	Yes
2.	11/12/2025	2:04:00 PM	Peter Doherty Street (Boggo Road Precinct)	Model Verification	External	Concrete demolition	Construction	67	83.9	57	80.2	Yes
3.	28/12/2025	8:13:00 PM	Albert Street (Albert Street Precinct)	Model Verification	External	Road and Utilities Works	Demolition and Utilities works	59	81	52	77.8	Yes
4.	28/12/2025	8:35:00 PM	Albert Street (Albert Street Precinct)	Model Verification	Internal	Road and Utilities Works	Demolition and Utilities works	42	72.4	35	70.4	Yes
5.	28/12/2025	9:15:00 PM	Albert Street (Albert Street Precinct)	Model Verification	Internal	Road and Utilities Works	Demolition and Utilities works	42	35.9	35	34.1	Yes
6.	29/12/2025	8:05:00 PM	Albert Street (Albert Street Precinct)	Model Verification	External	Road and Utilities Works	Demolition and Utilities works	59	74.6	52	72.5	Yes
7.	29/12/2025	8:43:00 PM	Albert Street (Albert Street Precinct)	Model Verification	Internal	Road and Utilities Works	Demolition and Utilities works	42	42.3	35	41.9	Yes

- [1] Intermittent noise goal (LA10)

- [2] Continuous noise goal (LAeq)

- [3] In accordance with Imposed Condition 11, where internal noise levels were unable to be measured, external noise goals were developed by an acoustic specialist using the following standards: ISO 140-5:1998 Acoustics – Measurement of Sound Insulation in Buildings and of Building Elements, Part 5: Field measurements of airborne sound insulation of façade elements and facades and ISO 354:1985 Acoustics – Measurement of sound absorption in a reverberation room.

3.3 Air Quality

3.3.1 Deposited Dust Results

Air quality requirements (levels) are defined as goals within Imposed Condition 13. The goals are to be aimed for. The Coordinator-General's Change Reports acknowledges instances when these goals may not be achieved. Dust deposition monitoring was performed in December 2025. The dust deposition gauge results for the reporting period are detailed below, and all monitoring data adhered to Project requirements.

Table 4: Air Quality Monitoring – December Deposited Dust Data

Location	Project Wide Air Quality Goals ^[1]			Monitoring results (mg/m ² /day)	Comments
	Criterion	Air Quality Indicator	Goal (mg/m ² /day)		
Roma Street Precinct	Nuisance	Deposited dust	120	20.69	Air quality monitoring was performed during the reporting period. All results adhered to Project requirements.
Albert Street Precinct (South)				– ^[2]	
Albert Street Precinct (North)				37.93	
Woolloongabba Precinct (North)				21.88	
Woolloongabba Precinct (South)				40.63	
Boggo Road Precinct (North)				16.67	
Boggo Road Precinct (South)				16.67	
Southern Portal (East)				13.33	

- ^[1] Project works must aim to achieve construction air quality goals. The Coordinator-General Change Report – Whole of Project Refinements 2019 acknowledges that instances exist in which these goals may not be achieved.
- ^[2] During the reporting period, the Albert Street Precinct (south) monitoring gauge had significant foreign objects in the sampling bottle. The objects included melted plastic, ash, and other unidentified objects. It is believed the dust deposition gauge was tampered with during the reporting period.

3.3.2 Ambient Air Quality Results

Monitoring of Total Suspended Particles (TSP) and particulate matter less than 10µm (PM10) was conducted in December 2025.

TSP and PM10 are monitored using portable air quality units and nearby Government air quality stations. Targeted monitoring of potential dust-generating activities is conducted by the mobile air quality units and was completed at Woolloongabba, Albert Street and Boggo Road Precincts in December 2025. Three (3) Government air quality stations near the Construction Precincts are also utilised.

Table 5: Targeted Air Quality Monitoring – Total Suspended Particles and PM10 Data

Date	TSP	PM10	Woolloongabba		Albert Street		Boggo Road	
	Project Goal ^[1]	Project Goal ^[1]	TSP	PM 10	TSP	PM 10	TSP	PM 10
	(µg/m ³ /24 hr)							
01-December-25	80	50	11.64	11.18	6.15	6.13	12.84	12.72
02-December-25	80	50	10.42	9.64	3.37	3.32	6.94	6.75
03-December-25	80	50	8.25	7.89	4.98	4.97	7.70	7.62
04-December-25	80	50	8.81	8.40	4.57	4.57	8.71	8.64
05-December-25	80	50	7.43	6.87	3.30	3.29	6.38	6.34
06-December-25	80	50	- [2]	- [2]	2.77	2.76	6.43	6.37
07-December-25	80	50	- [2]	- [2]	3.22	3.22	6.61	6.55
08-December-25	80	50	- [2]	- [2]	4.79	4.79	6.35	6.32
09-December-25	80	50	- [2]	- [2]	5.78	5.77	7.96	7.90
10-December-25	80	50	- [2]	- [2]	4.92	4.91	6.13	6.09
11-December-25	80	50	- [2]	- [2]	3.99	3.98	6.16	6.12
12-December-25	80	50	- [2]	- [2]	4.91	4.90	12.96	12.92
13-December-25	80	50	- [2]	- [2]	5.41	5.41	5.34	5.31
14-December-25	80	50	- [2]	- [2]	4.64	4.63	9.38	9.33
15-December-25	80	50	- [2]	- [2]	12.27	12.27	18.41	18.35
16-December-25	80	50	- [2]	- [2]	8.05	8.04	15.73	15.62
17-December-25	80	50	- [2]	- [2]	8.28	8.63	11.35	11.30
18-December-25	80	50	- [2]	- [2]	6.06	6.05	8.88	8.83

Date	TSP Project Goal ^[1]	PM10 Project Goal	Woolloongabba		Albert		Boggo Road	
			TSP	PM 10	TSP	PM 10	TSP	PM 10
			(µg/m ³ /24 hr)					
19-December-25	80	50	- ^[2]	- ^[2]	5.00	4.99	9.20	9.13
20-December-25	80	50	- ^[2]	- ^[2]	3.64	3.64	7.37	7.32
21-December-25	80	50	- ^[2]	- ^[2]	2.99	2.98	7.01	6.98
22-December-25	80	50	- ^[2]	- ^[2]	4.55	4.54	9.51	9.45
23-December-25	80	50	- ^[2]	- ^[2]	7.78	7.77	9.89	9.78
24-December-25	80	50	- ^[2]	- ^[2]	17.46	16.31	16.03	15.93
25-December-25	80	50	- ^[2]	- ^[2]	12.43	12.42	13.34	13.24
26-December-25	80	50	- ^[2]	- ^[2]	7.58	7.57	15.25	15.21
27-December-25	80	50	- ^[2]	- ^[2]	0.02	0.00	3.33	3.30
28-December-25	80	50	- ^[2]	- ^[2]	4.33	4.30	6.23	6.17
29-December-25	80	50	- ^[2]	- ^[2]	3.93	3.91	8.20	8.15
30-December-25	80	50	- ^[2]	- ^[2]	5.17	5.16	9.95	9.92
31-December-25	80	50	- ^[2]	- ^[2]	10.26	10.25	11.54	11.48

- ^[1] Project works must aim to achieve construction air quality goals. The Coordinator-General Change Report – Whole of Project Refinements 2019 acknowledges instances where these goals may not be achieved.
- ^[2] The Woolloongabba air quality unit experienced technical difficulties from the 5th December 2025. The error notification alarm failed to activate, and the error was only detected during the data download. The unit has been investigated, and CBGU is trying to resolve the issue. A nearby (Woolloongabba) DETSI Air Quality Station demonstrated compliant air quality during this outage period. From

CBGU also utilise three (3) Government air quality monitoring stations to monitor PM10 near the Project sites. The results during this reporting period were as follows:

- Brisbane CBD: PM10 daily maximum average: **32.0 µg/m3/24 hr** (<https://apps.des.qld.gov.au/air-quality/chart/?station=cbd¶meter=18&date=1/10/2025&timeframe=month>)
- South Brisbane: PM10 daily maximum average: **36.4 µg/m3/24 hr** (<https://apps.des.qld.gov.au/air-quality/chart/?station=cbd¶meter=18&date=1/10/2025&timeframe=month>)
- Woolloongabba: PM10 daily maximum average: **28.2 µg/m3/24 hr** (<https://apps.des.qld.gov.au/air-quality/chart/?station=cbd¶meter=18&date=1/10/2025&timeframe=month>)

The graphical representation of the Government air quality data is presented in the charts below (refer to Figure 1-3).

Particle PM₁₀ at Brisbane CBD, 1–31 December 2025 [about Particle PM₁₀](#)

[Brisbane CBD station overview](#)

The guideline for Particle PM₁₀ is 100µg/m³ (1hr avg) and 50µg/m³ (24hr avg).

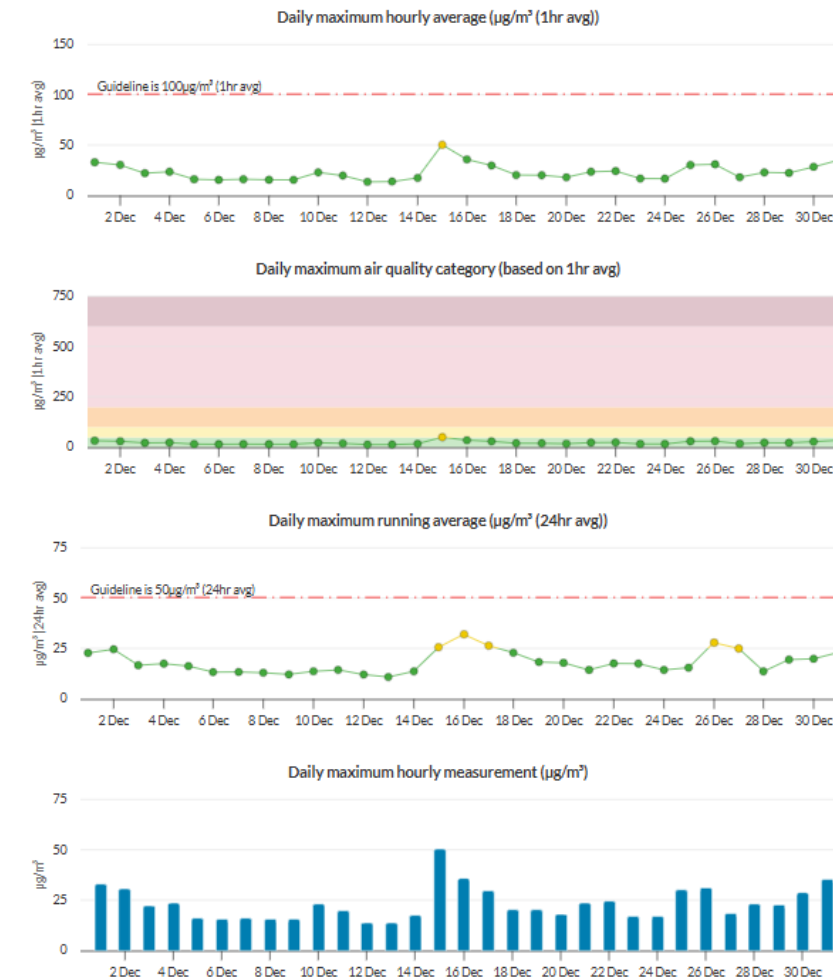


Figure 1: Brisbane CBD – DETSI Station - PM10 graph for December 2025 (reproduction from the DETSI website).

Particle PM₁₀ at South Brisbane, 1-31 December 2025 [about Particle PM₁₀](#)

[South Brisbane station overview](#)

The guideline for Particle PM₁₀ is 100µg/m³ (1hr avg) and 50µg/m³ (24hr avg).

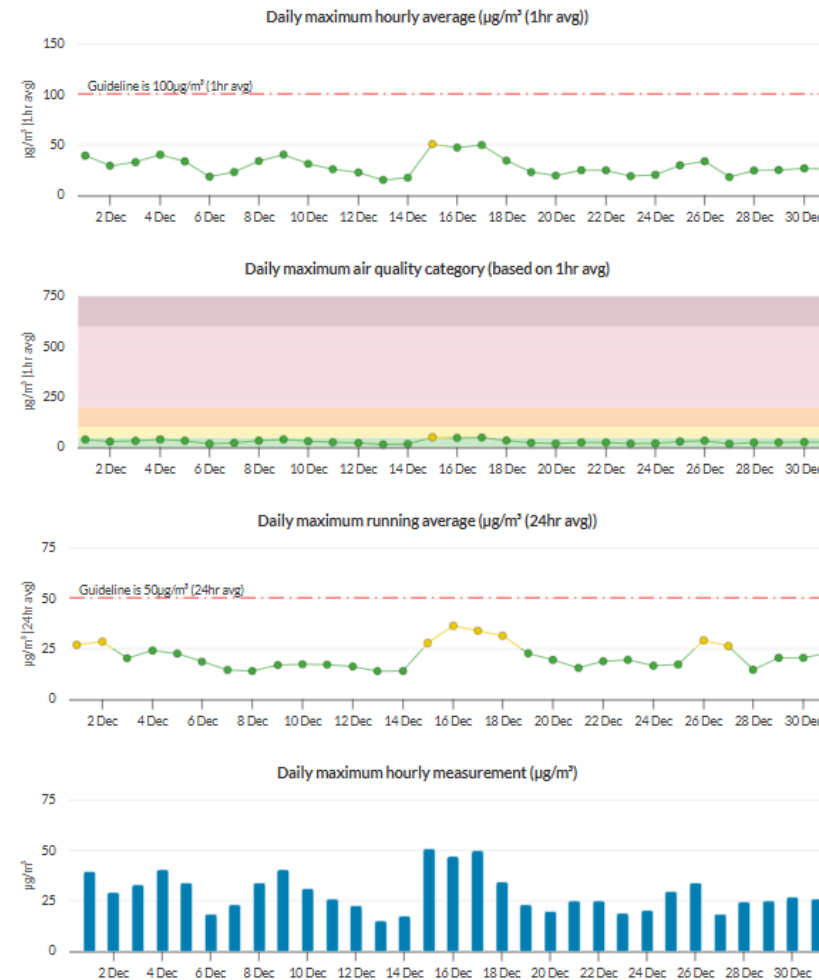


Figure 2: South Brisbane – DETSI Station - PM10 graph for December 2025 (reproduction from the DETSI website).

Particle PM₁₀ at Woolloongabba, 1–31 December 2025 [about Particle PM₁₀](#)

[Woolloongabba station overview](#)

The guideline for Particle PM₁₀ is 100µg/m³ (1hr avg) and 50µg/m³ (24hr avg).

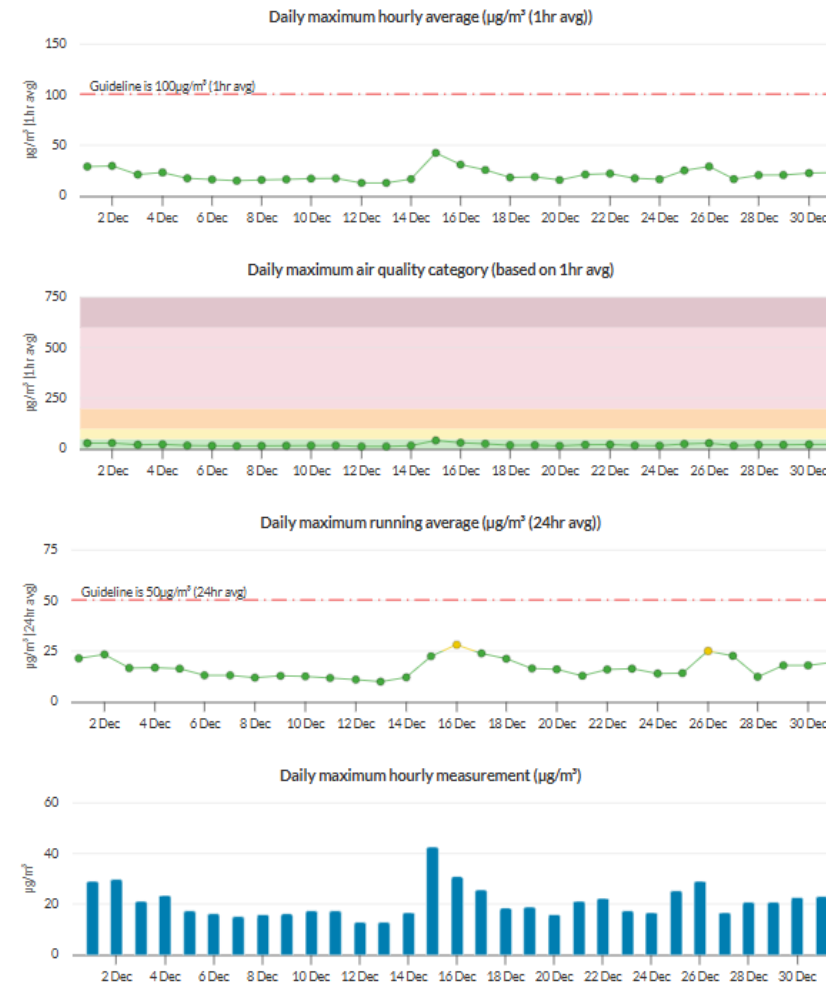


Figure 3: Woolloongabba – DETSI Station - PM10 graph for December 2025 (reproduction from the DETSI website).

3.4 Water Quality – Discharge

CBGU undertook five (5) water quality monitoring events (groundwater and surface water) before the release from the site.

3.4.1 Groundwater Discharge

Water quality monitoring data is provided in the table below.

Table 6: Groundwater Discharge – Water Quality Monitoring Data

Location	Date	Testing of Water Quality Objectives ^[1]											Adhered to Project Requirements (Yes / No)
		pH	Suspended solids (mg/L)	Turbidity (NTU)	Ammonia N (µg/L) ^[3]	Oxidised N (µg/L) ^[3]	Organic N (µg/L) ^[3]	Total nitrogen (µg/L) ^[4]	Total phosphorus (µg/L)	Filterable Reactive phosphorus (µg/L) ^[3]	Chlorophyll a (µg/L)	Dissolved oxygen (%) ^[2]	
Woolloongabba	1/12/2025	8.30	12.00	0.70	10.00	2580.00	800.00	3400.00	10.00	<10	<1	104.79	Yes
Boggo Road	1/12/2025	7.40	10.00	1.90	10.00	2160.00	500.00	2700.00	<10	<10	<1	98.60	Yes

- [1] The Project's discharge procedure minimises environmental impact and aims to achieve the water quality objectives. Water quality objectives are defined as goals within the Brisbane River estuary environmental values and water quality objectives document.
- [2] All results adhere to Project requirements in that site practices are designed to aim to achieve the water quality objectives. The dissolved oxygen samples were acquired before discharge from the site. Pumping of the water will have inadvertently aerated the water, thus influencing the dissolved oxygen level.
- [3] All results adhere to Project requirements in that site practices aim to achieve the water quality objectives. These samples identified results generally consistent with pre-construction conditions, and no external influences were introduced by construction activity.
- [4] Total nitrogen levels adhered to Project requirements in that site practices are designed to aim to achieve the water quality objectives. The results are mostly below that of the receiving environment. They are also considered abnormal compared to results from previous months and are influenced by external factors (e.g. high rainfall events, overloaded sewage systems, fertilising natural areas, etc.) rather than related to construction activities.
- Note: Testing of EPP (Water) Quality Objectives is analysed monthly at a NATA-accredited laboratory (results provided above). Field testing (turbidity and pH) is conducted regularly during ongoing discharge.

3.4.2 Ponded/Surface Water Discharge

Discharged ponded/Surface water quality monitoring data is provided in the table below.

Table 7: Surface Water Discharge - Water Quality Monitoring Data

No.	Location	Date	Testing of Water Quality Objectives ^[1]		Adhered to Project Requirements (Yes / No)
			pH	Turbidity (NTU)	
1.	Northern Portal	1/12/2025	8.05	4.03	Yes
2.	Roma Street	1/12/2025	7.98	0.20	Yes
3.	Albert Street	1/12/2025	8.03	0.16	Yes

- [1] The Project's discharge procedure is designed to minimise environmental impact and aims to achieve the water quality objectives. All discharges were compliant with Guidelines for Best Practice Erosion and Sediment Control (IECA, 2008) and the Department of Transport and Main Roads' Technical Standard MRTS 52 – Erosion and Sediment Control.

3.5 Water Quality – Surface Water

In December 2025, CBGU JV undertook one (1) round of surface water sampling at five (5) site locations (upstream and downstream).

The monitoring locations' results reflect the overall condition of the broader catchment, not just the project's influence. Water discharge from the project would not have impacted the catchment, considering the results also provided in section 3.4 above.

Table 8: Offsite Upstream & Downstream Water Quality Data

Location	Upstream / Downstream	Date	Purpose of Monitoring	Turbidity (NTU)	Dissolved oxygen (%)	pH
Woolloongabba	Upstream	8/12/2025	Monthly/Post rain	52.2	89.6	7.72
Woolloongabba	Downstream	8/12/2025	Monthly/Post rain	23.7	112.17	7.35
Boggo Road	Upstream	8/12/2025	Monthly/Post rain	19.3	111.46	6.97
Albert Street	Upstream	8/12/2025	Monthly/Post rain	57.6	84.34	7.44
Albert Street	Downstream	8/12/2025	Monthly/Post rain	62.8	88.76	7.64
Roma Street	Upstream	8/12/2025	Monthly/Post rain	86.4	75.46	7.3
Roma Street	Downstream	8/12/2025	Monthly/Post rain	98	76.35	7.5
Northern Portal	Upstream	8/12/2025	Monthly/Post rain	10.68	88.4	7.36
Northern Portal	Downstream	8/12/2025	Monthly/Post rain	6.81	58.1	6.68

- [1] Monitoring at the Boggo Road site occurs at a culvert outlet at the beginning of the surface catchment. There is no upstream or downstream monitoring point as such. The culvert outlet receives water released from the site and a broader stormwater catchment.

4. Non-Compliances

Details of non-compliances are provided in accordance with Imposed Condition 6(b)(ii).

A Non-Compliance Event is defined as Project works that do not comply with the Imposed Conditions. Nil non-compliances occurred during the monitoring period.

Table 9: Non-Compliance Events this Month

Event Title	Location, Date, and time of the event	Date the Event was Formally Notified to CG/IEM	Conditions Affected	Date the Event Report Formally Sent to CG/IEM	Status of Event
Nil					

5. Complaints

The reporting of complaints is provided below in accordance with Imposed Condition 6(b)(iii).

During December 2025, seven (7) complaints were received by CBGU, however only six (6) related to Project Works, as detailed in Table 10 below.

Table 10: Summary of Complaints

No.	Date	Location	Description of Issue	Responses	Status of Event
1.	3 December 2025	Albert Street (Albert Street Precinct)	Noise	A stakeholder contacted the Project regarding noise generated near the Albert Street worksite. CBGU provided the stakeholder with an overview of the works occurring and their duration. CBGU reviewed the circumstances, and monitoring confirmed that the works adhered to the Project's noise requirements and were consistent with the community notification.	Closed
2.	12 December 2025	(Woolloongabba Precinct)	Not related to Project Works	A stakeholder contacted the Project regarding noise generated near the Woolloongabba worksite. CBGU determined the complaint was not related to CBGU's work.	Closed
3.	27 December 2025	Albert Street (Albert Street Precinct)	Noise	A stakeholder contacted the Project regarding noise generated near the Albert Street worksite. CBGU provided the stakeholder with an overview of the works occurring and their duration. CBGU reviewed the circumstances, and monitoring confirmed that the works adhered to the Project's noise requirements and were consistent with the community notification.	Closed
4.	27 December 2025	Albert Street (Albert Street Precinct)	Noise	A stakeholder contacted the Project regarding noise generated near the Albert Street worksite. CBGU provided the stakeholder with an overview of the works occurring and their duration. CBGU reviewed the circumstances, and monitoring confirmed that the works adhered to the Project's noise requirements and were consistent with the community notification.	Closed
5.	27 December 2025	Albert Street (Albert Street Precinct)	Noise	A stakeholder contacted the Project regarding noise generated near the Albert Street worksite. CBGU provided the stakeholder with an overview of the works occurring and their duration. CBGU reviewed the circumstances, and monitoring confirmed that the works adhered to the Project's noise requirements and were consistent with the community notification.	Closed

6.	29 December 2025	Albert Street (Albert Street Precinct)	Noise	<p>A stakeholder contacted the Project regarding noise generated near the Albert Street worksite. CBGU provided the stakeholder with an overview of the works occurring and their duration.</p> <p>CBGU reviewed the circumstances, and monitoring confirmed that the works adhered to the Project's noise requirements and were consistent with the community notification.</p>	Closed
7.	31 December 25	Albert Street (Albert Street Precinct)	Noise	<p>A stakeholder contacted the Project regarding noise generated near the Albert Street worksite. CBGU provided the stakeholder with an overview of the works occurring and their duration.</p> <p>CBGU reviewed the circumstances, and monitoring confirmed that the works adhered to the Project's noise requirements and were consistent with the community notification.</p>	Closed