

# Works Notice

February 2026

## Hope Island station construction update

Acciona Georgiou Joint Venture (AGJV) is continuing works at Hope Island station.

Key construction activities to be carried out in February are outlined below.



*Pictured: Station and car park construction*

### Upcoming works

Location	Hours of work	Type of work
Station car park and building works	<ul style="list-style-type: none"> <li>7:00am to 5:00pm Monday to Saturday</li> <li>Intermittent out of hours works in the car park between 7:00pm and 5:00am from Sunday to Thursday.</li> </ul>	<ul style="list-style-type: none"> <li>Line marking and signage installation in the station car park</li> <li>Fence installation, footpath pavement construction, landscaping and finishing works around the station and carpark</li> <li>Ongoing minor station building fit-out activities</li> <li>Site office demobilisation and reinstatement works</li> </ul>
Station platform works	<ul style="list-style-type: none"> <li>7:00am to 5:00pm Monday to Saturday</li> </ul>	<ul style="list-style-type: none"> <li>Ongoing minor platform fit-out activities including installation of services, platform furniture and signage</li> </ul>
Hope Island Road works	<ul style="list-style-type: none"> <li>7:00am to 5:00pm Monday to Saturday</li> <li>Intermittent out of hours between 7:00pm and 5:00am from Sunday to Thursday.</li> </ul>	<ul style="list-style-type: none"> <li>Finishing works and landscaping activities</li> <li>Testing of new traffic signals (intersection will be activated when the station opens)</li> </ul>

*\*Construction activities are subject to weather and site conditions.*

### Testing and commissioning activities

- Testing and commissioning activities are underway and being undertaken progressively.
- Testing will be carried out on electrical systems including lighting and other station systems and equipment (CCTV, alarms, public address system and lifts).

## Rail corridor works

Rail corridor works including platform construction activities are planned outside the project's normal working hours to ensure works can be completed safely and efficiently. Out of hours rail corridor works are scheduled **from 12:00am Saturday 14 February to 3:00am Monday 16 February 2026**.

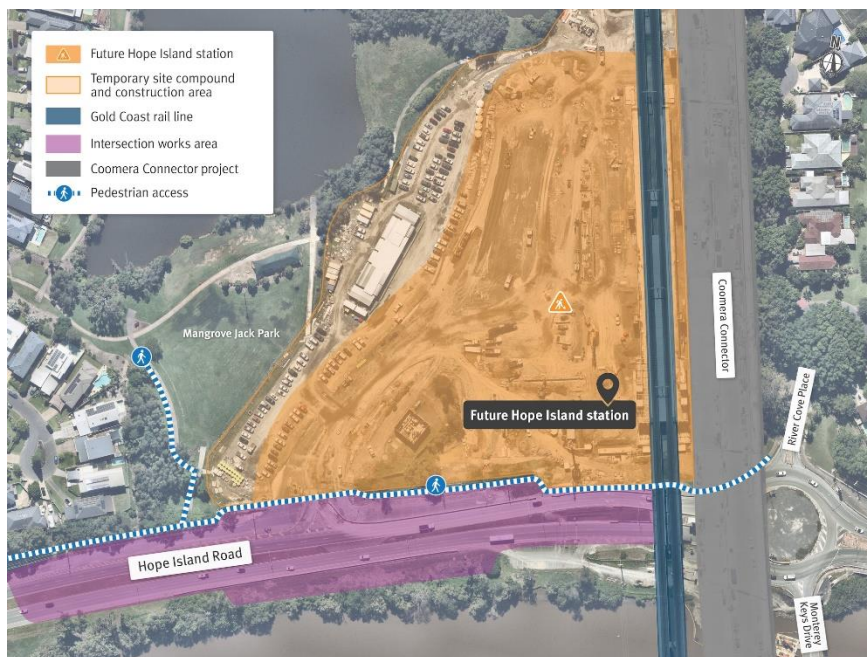
## Changes to the way you travel

Construction of new stations, including Hope Island, on the Gold Coast line can mean changes to your travel. We encourage you to plan ahead by downloading the Translink app, visiting [Translink.com.au](https://www.translink.com.au) or calling 13 12 30.

## What to expect

- Construction activities may generate increased levels of noise, dust, and vibration associated with the use of construction equipment. Every effort will be taken to keep noise to a minimum
- Safety lighting and reversing squawkers will be in use; however, lighting will be positioned away from residential properties where possible
- The use of machinery including elevated work platforms, excavators, trucks, compaction equipment, vacuum trucks, concreting equipment, cranes, water carts, and other hand-held tools
- Increased truck movements to and from site
- Pedestrian changes in Mangrove Jack Park and along Hope Island Road. Please follow all relevant signage.
- Local traffic changes including intermittent lane closures and night works on Hope Island Road

## Work area



## Project information

Visit [www.crossriversrail.qld.gov.au](https://www.crossriversrail.qld.gov.au) or scan the QR code to register to receive project updates.

To view and provide feedback on AGJV's Communication and Engagement Strategy, visit [www.crossriversrail.qld.gov.au](https://www.crossriversrail.qld.gov.au), email AGJV at [hopeislandstation@ag-jv.com.au](mailto:hopeislandstation@ag-jv.com.au) or call 1800 010 875.



1800 010 875



[hopeislandstation@ag-jv.com.au](mailto:hopeislandstation@ag-jv.com.au)



[crossriversrail.qld.gov.au](https://www.crossriversrail.qld.gov.au)



If you need an interpreter to assist you in understanding this document, please call the Translating and Interpreting Service (TIS National) on 131 450 and request to be transferred to Multicultural Affairs Queensland on 13 QGOV (13 74 68)

**CROSSRIVERRAIL**  
DELIVERY AUTHORITY



**Queensland**  
Government