

Clapham Yard

Clapham Yard will play a vital role in contributing to the reliability of the South East Queensland rail network. Work includes delivery of new crew, graffiti and maintenance facilities as well as improvements to overall network efficiency.

Located on Fairfield Road adjacent to Moorooka station, Clapham Yard will support Queensland Rail increase the train fleet to meet the growing demand for passenger trains and services in South East Queensland.

Features of Clapham Yard will include:

- ✦ A new maintenance facility for graffiti removal, cleaning carriages and light maintenance
- ✦ Capacity to accommodate up to 27 six-car trains
- ✦ New security gatehouse and Queensland Rail secure vehicle access off Chale Street
- ✦ New dual gauge rail bridge and raised viaduct over Moolabin Creek
- ✦ A road overpass providing connectivity between Chale Street and the new stabling facility
- ✦ Crew facilities for train drivers and staff including operational control centre, offices, a lunchroom, staff amenities and parking
- ✦ A pedestrian walkway providing Queensland Rail staff with a secure connection between the new crew facilities and Moorooka station.



Clapham Yard
Artist impression - subject to change

What is a stabling yard?

Stabling yards are where trains and rollingstock return at the end of service (or when they are not in use), to be stabled off the mainline, cleaned and prepared for next service use. Stabling yards are situated at key locations across the rail network. The use of stabling yards is critical in ensuring the safe and efficient operation of day-to-day services.

What type of trains will be stabled at Clapham Yard?

New Generation Rollingstock (NGR) trains will be stabled at Clapham Yard. Older trains may be stabled there on occasion, depending on operational requirements.



What will the stabling yard look like?

A typical stabling yard is a high-security fenced open-air site with rail infrastructure including train tracks, connection to the main line, overhead electrical lines (power supply), signalling and communications systems, CCTV and lighting. Additional infrastructure and facilities are required to support stabling operations including a rail traffic crew building (RTCB) consisting of offices and staff amenities (toilet and shower facilities), staff carparks, roads and walkways.

What hours will the facility operate?

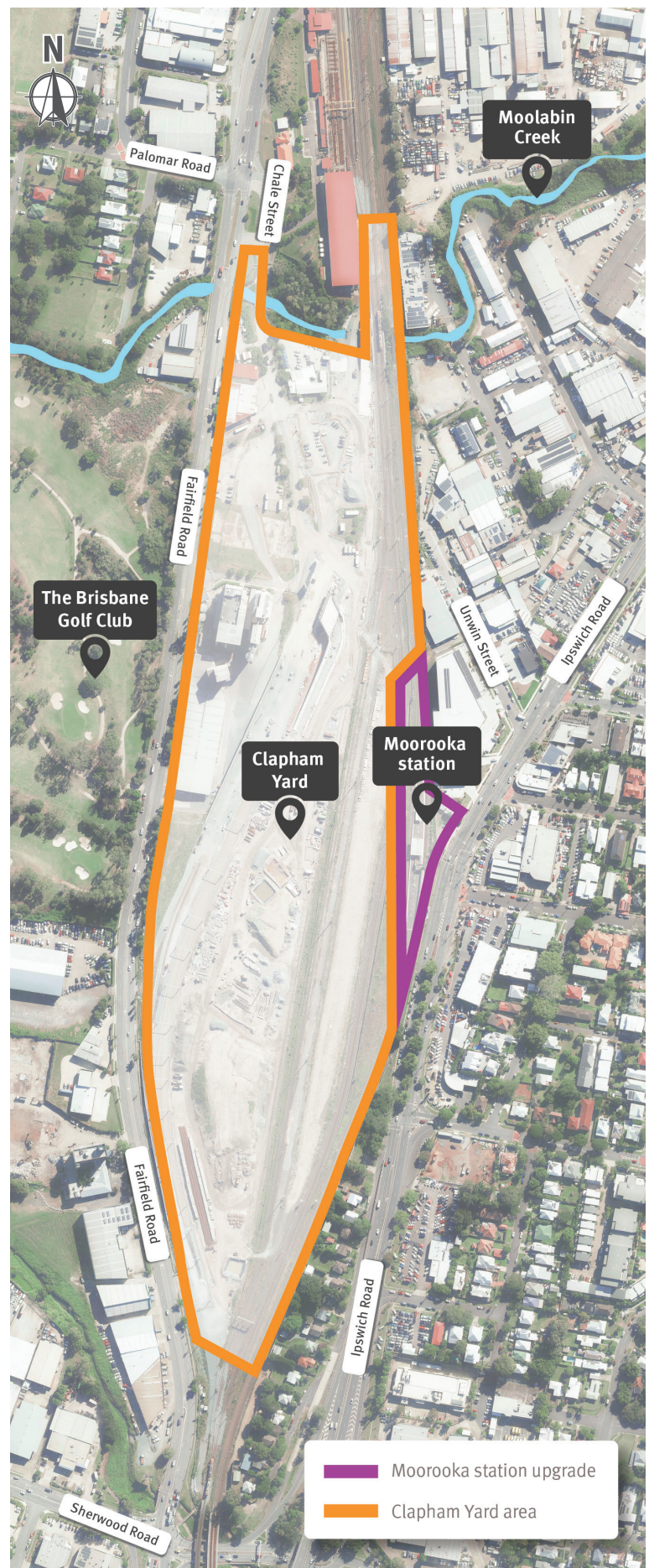
Clapham Yard will be available 24 hours per day, seven days per week to stable up to 27 six-car trains. Usually, stabling yards create a low-level of rail activity throughout the day. Most activity occurs after the afternoon peak and before the morning peak to prepare trains for the first morning services.

Use of Clapham Yard will depend on operational requirements, including:

- ◀ When they complete their final evening services
- ◀ When and where trains are needed the next morning
- ◀ Future train timetabling requirements and changes.

Current status

Major construction at Clapham Yard is underway and will become operational following a phase of extensive testing and commissioning.



If you need an interpreter to assist you in understanding this document, please call the Translating and Interpreting Service (TIS National) on 131 450 and request to be transferred to Multicultural Affairs Queensland on 13 QGOV (13 74 68)

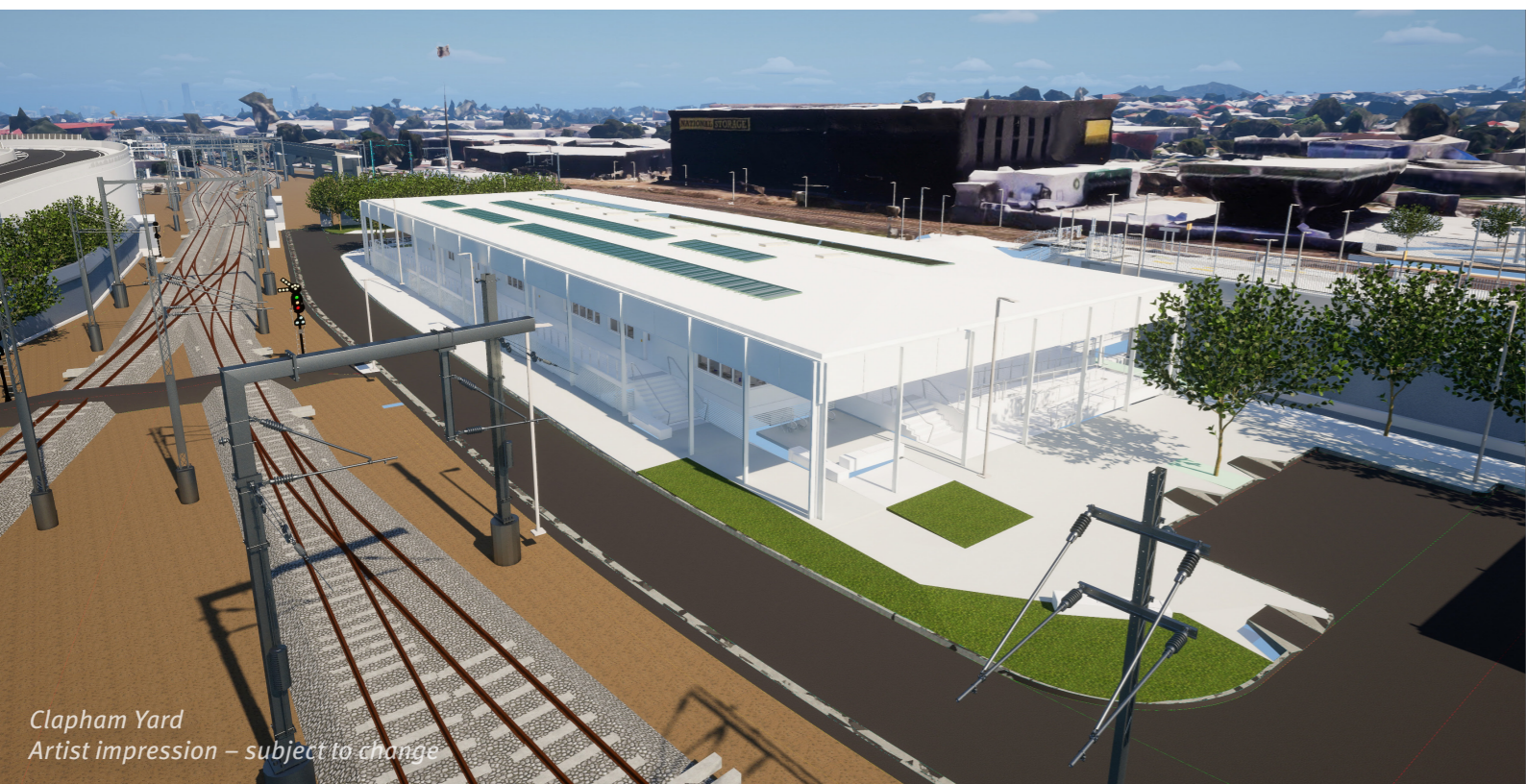
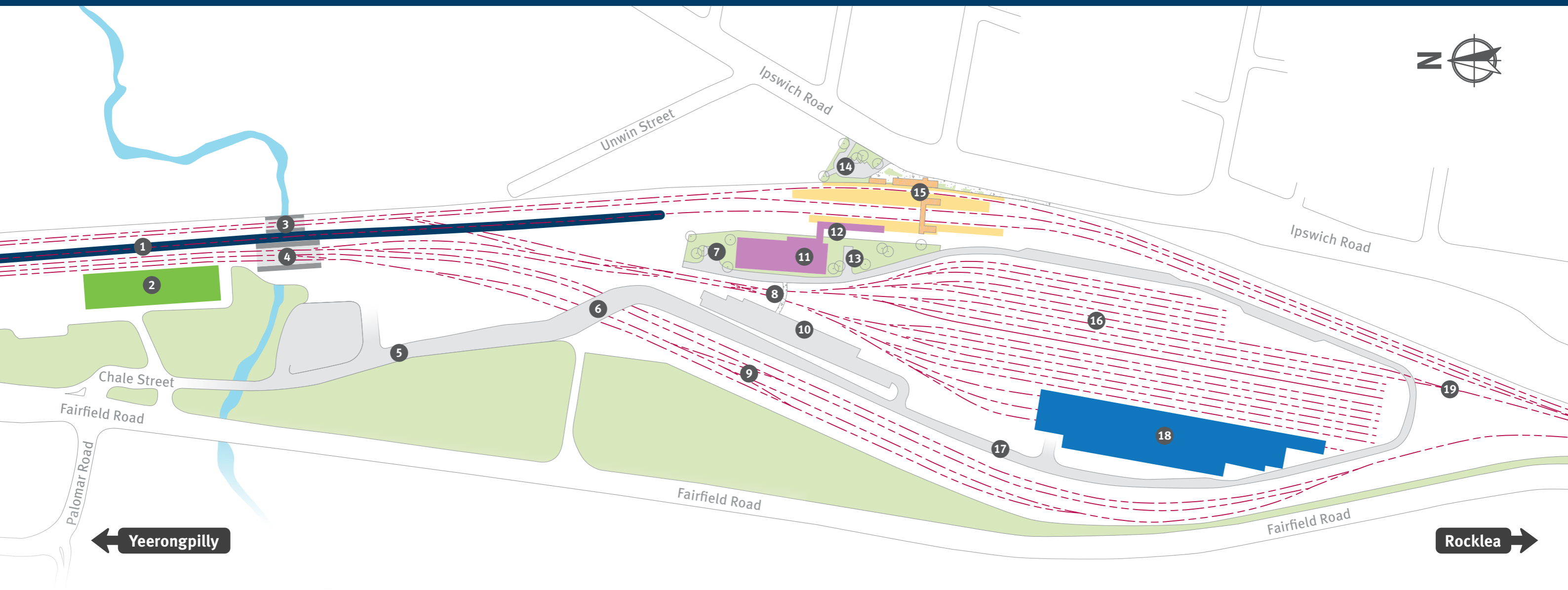
1800 010 875

info@unityalliance.com.au

crossriverrail.qld.gov.au



Features of Clapham Yard



Clapham Yard features

- | | | |
|--|--|---|
| 1 MOOROOKA VIADUCT (ELEVATED RAIL) | 8 RAIL TRAFFIC CREW BUILDING (RTCB) CARPARK FOOTPATH | 15 MOOROOKA STATION |
| 2 EXISTING AURIZON RAIL WELD FACILITY | 9 DUAL GAUGE TRACKS AND HOLDING ROADS | 16 CLAPHAM YARD STABLING ROADS |
| 3 EXISTING MOOLABIN CREEK RAIL BRIDGE | 10 CLAPHAM YARD STAFF CARPARK | 17 INTERNAL ACCESS ROAD |
| 4 NEW MOOLABIN CREEK RAIL BRIDGE | 11 RTCB | 18 CLAPHAM YARD GRAFFITI REMOVAL AND MAINTENANCE FACILITY |
| 5 GATEHOUSE FOR SECURE VEHICLE ACCESS (STAFF ONLY) | 12 SECURE WALKWAY (STAFF ONLY) TO MOOROOKA STATION | 19 CLAPHAM YARD SOUTHERN ENTRY |
| 6 CHALE STREET VEHICLE OVERPASS | 13 RTCB ACCESSIBLE PARKING | |
| 7 INTERNAL ACCESS ROAD TURNAROUND AREA | 14 MOOROOKA STATION KISS 'N' RIDE AND ACCESSIBLE PARKING | |

Clapham Yard
Artist impression – subject to change