

Works Notice

December 2025 and January 2026

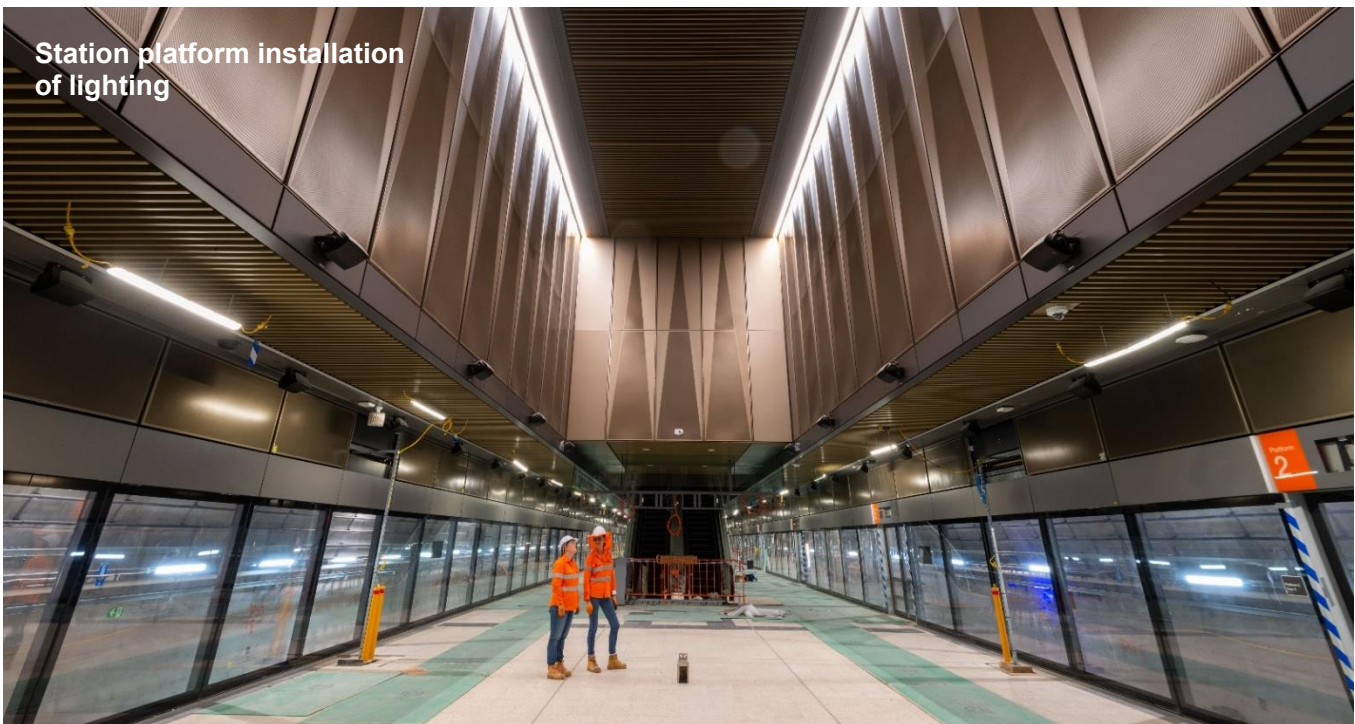
Woolloongabba station construction update

Fit out works at Woolloongabba station are underway with the team focusing on the service and utility upgrades on nearby roads and footpaths.

Inside the station building, works are progressing on key front-of-house areas, including the future station atrium. The platform has come to life with the installation of lighting.

Outside the station construction is also underway to create a tree lined entrance to the station and install the tiled artwork "*Mirror Pond*".

Station platform installation of lighting



What to expect during construction:

- Continuing underground and surface works including outside standard hours
- Out-of-hours surface works including hammering, water blasting, steel cutting, drainage works and concrete pumping
- Potential noise, dust and vibration including work outside of standard construction hours
- Temporary lighting for out-of-hours works
- Out-of-hours deliveries of large trucks and plant including mobilisation, set up and demobilisation
- Temporary road works including footpath upgrading works, pavement removal, lighting installation and traffic changes.
- Ongoing intermittent lane, road and footpath detours and closures at Leopard, Main, Gibbon and Stanley streets, and surrounding streets where required.



Details of work

Woolloongabba station and precinct

Main station and tunnel work



- Crane operations during day and night shifts to support the station fit out and demobilisation of large plant and sheds
- Installing glazing, cladding and structural steel in the main station atrium
- Fitting out the station building, services building, canopy structure including baffle ceilings, smoke screens, glass panels, tiled floors and bathroom fixtures
- Mechanical and electrical fit-out within the services building, basement levels, mezzanine and platform levels including balustrades on escalators, fire safety equipment and speakers
- Transporting large plant and vehicles
- Testing and commissioning activities.

Surface and precinct work



- Mass earthworks around the station, services building and new road and footpath
- Earthworks, formwork, reinforcement and concreting near the Woolloongabba busway station and Main Street
- Utility investigations, surveying, geotechnical works, and service relocations
- Sewer inspections, service installations, and water monitoring in and around the site
- Landscape works.

Surrounding streets and footpaths



- Utility investigations, surveying, geotechnical works and service relocations on local roads and footpaths throughout the Woolloongabba area.
- Line marking, signage and traffic signal installation on local roads and footpaths.
- Temporary detours and closures for pedestrians and vehicles, as well as ongoing pedestrian changes near Main Street and the busway.

All activities are subject to approvals and weather conditions

Woolloongabba busway station platform 2 – ongoing works to mid-2026

Ongoing work will continue for the new temporary footpath between Woolloongabba station platform 2 and Main Street until mid-2026.

Access between Woolloongabba station platform 2 and Main Street will be open on major Gabba events days.

You can also continue to use the pedestrian overpass which has both lifts and stairs.

Signage will be in place to guide you to and from the game. For further information, please visit translink.com.au or contact Cross River Rail on 1800 010 875.



Key: construction work hours

	Standard construction hours 6:30am to 6:30pm, Monday to Saturday.		Out of hours works Some activities will be completed out of normal construction hours, 6.30pm to 6.30am, due to traffic permits, logistics, safety requirements and construction methodology.		Tunnel fit out Tunnel fit out support activities and rail construction are undertaken 24 hours a day.
--	--	--	---	--	---



1800 010 875



crossriverrail@cbgujv.com.au



crossriverrail.qld.gov.au



If you need an interpreter to assist you in understanding this document, please call the Translating and Interpreting Service (TIS National) on 131 450 and request to be transferred to Multicultural Affairs Queensland on 13 QGOV (13 74 68)

CROSSRIVERRAIL
DELIVERY AUTHORITY



Queensland
Government