

# Works Notice

October and November 2025

## Roma Street station construction update

Construction activity around the Roma Street station precinct has increased in recent weeks and will continue through to early 2026. Works underway include footpath remediation, road resurfacing and essential utility upgrades.

Inside the new Roma Street station work continues to progress on the fit out and commissioning work of the station including glass installation work.

### Roma Street footpath works

From September to late 2025, works will take place on the northern side of Roma Street near the Services building to construct footpaths, kerbs, utility and streetscape upgrades.

To support these activities, a continuous eastbound lane closure and pedestrian detour will be in place on Roma Street between Countess and Garrick streets until November 2025.

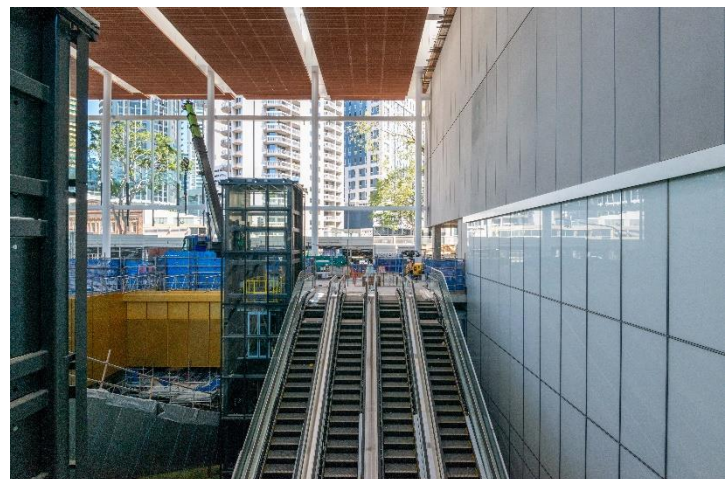
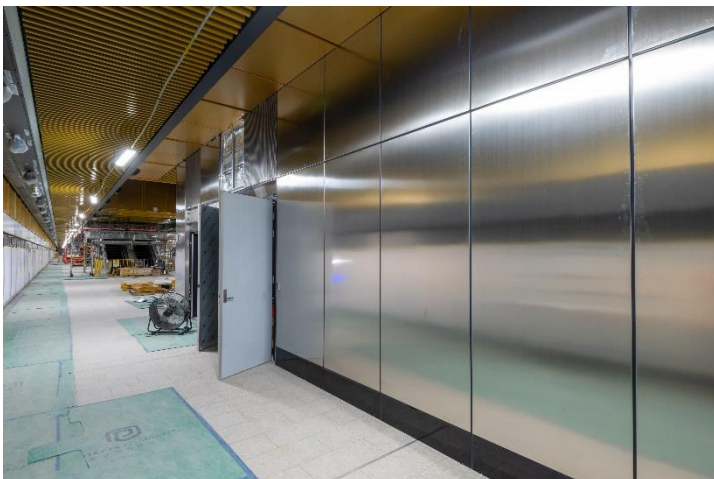
### Future work along Roma Street

Work to construct new footpaths and deliver other streetscape upgrades along Roma Street will be delivered in stages.

These works may require changes to traffic conditions and pedestrian access in the area. Further information, including timing and impacts, will be provided to the community in advance of the work commencing.



Above: View of the main station building from Roma Street.



Above: Fit out on the mezzanine floor and the station entrance at Roma Street station.

## Main station entrance building and existing station

Roma Street - Opposite Makerston Street

### Day and night work

- Oversized deliveries to and from site and the busway. Deliveries may occur at night.
- Installation and fit-out of external cladding and architectural and glass panels.
- Adjusting hoarding and scaffolding requiring hand tools and steel fixing.
- Intermittent short-term pedestrian stoppages, partial lane closures, footpath diversions and adjustments to pedestrian gantries along Roma Street.
- Removal of concrete slabs inside of worksite including the use of a rock hammer.
- Installing steel, roof sheeting, guttering and fit-out activities to construct the platform canopy.

## Services building

Roma Street - Opposite Garrick Street

### Day and night work

- Testing and commissioning services including tunnel ventilation systems, communication and control systems and energisation of services.
- Construction of driveway and service utility connections involving concreting activities, installation of scaffold, drainage and use of vacuum trucks.
- Heavy plant movement including use of cranes and oversized deliveries to site.
- Concrete demolition of temporary internal walls and slabs requiring hand tools and jackhammers.
- Commencement of service investigations and installation for sewer line and utilities on Roma Street.

## Surrounding streets and footpaths

Roma, Herschel, Makerston and George streets

### Day and night work

- Installation of permanent underground stormwater and sewer infrastructure including drainage pipes, manholes and gully pits along Roma Street.
- Temporary road works including footpath upgrading works, pavement removal, public lighting installation and traffic changes.
- Continued service investigations and installation for sewer line, stormwater line and utilities on Roma Street both at the main station and western services building.

## Underground cavern

Acoustic shed, corner of Roma Street and Parkland Boulevard

### Day and night work

- Fit-out of mechanical and electrical services, architectural panelling, ceiling material and tiling.
- Commissioning of tunnel ventilation systems, communication and control systems and energisation.
- Construction of building egress requiring concrete trucks and pumps.

### What to expect:

Roma Street station construction hours are 24 hours Monday to Friday and 6:30am to 6:30pm on Saturdays unless advised. Some activities may be required to take place outside of these hours.

During construction, you may notice:

- Increased levels of noise, dust and vibration
- Construction vehicles travelling to and from the worksite via Roma Street
- Delivery of materials and equipment to the worksite including at night
- Temporary traffic and pedestrian changes on Roma Street and surrounding streets.

## Community Survey

The Cross River Rail Tunnel & Stations team is committed to ensuring our community is kept up-to-date with project information and construction updates.

Feedback about your experience with the team is essential to ensure our communication and engagement with local residents and businesses is effective.

Please follow this QR code to a quick survey. We would appreciate your feedback by Friday 31 October 2025.



1800 010 875



[crossriverrail@cbgujv.com.au](mailto:crossriverrail@cbgujv.com.au)



[crossriverrail.qld.gov.au](http://crossriverrail.qld.gov.au)



If you need an interpreter to assist you in understanding this document, please call the Translating and Interpreting Service (TIS National) on 131 450 and request to be transferred to Multicultural Affairs Queensland on 13 QGOV (13 74 68)

**CROSSRIVERRAIL**  
DELIVERY AUTHORITY



**Queensland**  
Government