

# Work Notice

October and November 2025

## Albert Street station construction update

Fit-out of the main station entrance (Lot 1) is progressing, with delivery and installation of escalators underway.

In the underground cavern (Lot 2), mechanical and electrical works continue in front-of-house and back-of-house areas. The team is also on track to achieve the major milestone of completing platform tiling in the coming weeks.

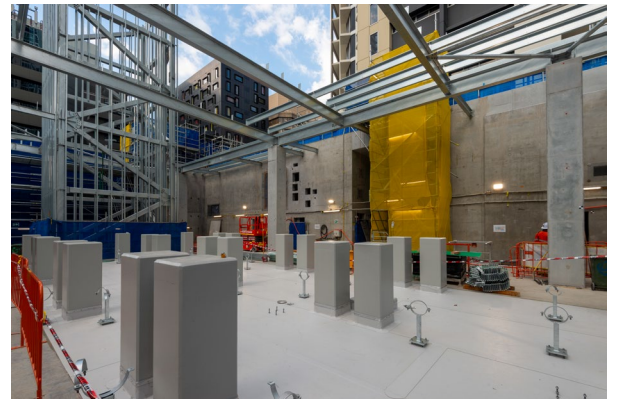
Throughout October and November, activity at the northern station entrance will include installation of structural steel and bronze aluminium cladding on the station entrance and canopy.

Progress is also being made along the Green Spine, with tiling between Eilizabeth and Charlotte streets, and site set up and excavation works between Charlotte and Mary streets.

**Lot 1** – Main station entrance site (corner of Mary and Albert streets)



- Formwork and reinforcement cutting, fixing and installation using hand tools
- Concrete pours, concrete cutting using high pressure water, demolition including hydro demolition works.
- Heavy plant movement (day and night) including cranes, transport and delivery of materials, equipment, and machinery.
- Station building fit-out including block work, cladding, patching, waterproofing and installation of structural steel, mechanical and electrical services, escalators and canopy installation.
- Scaffold installation and removal.
- Utility services investigation and installation.
- Site facilities adjustments and pedestrian gantry changes. Pedestrian detours and short-term holds are required.
- Removal of mobile crane requiring traffic changes on Mary Street.



Above: Structural steel installation at the main station entrance roof.

### Lot 1 - Out Of Hours Work

With the station roof structure now complete, the team are focused on the final finishes of the main station entrance building including metal roof cladding, architectural louvers and an aluminium wall extending from the canopy to the top of the roof. These works will occur during both day and night shift. Scan the QR code for more information.

The installation of the main station canopy will also commence from October and November 2025 and will require some lane and footpath closures on Albert and Mary streets including the Albert Street pedestrian gantry between Charlotte and Mary streets.



### Green Spine

Scan the QR code for the latest information on the construction of the Green Spine.



### Community Survey

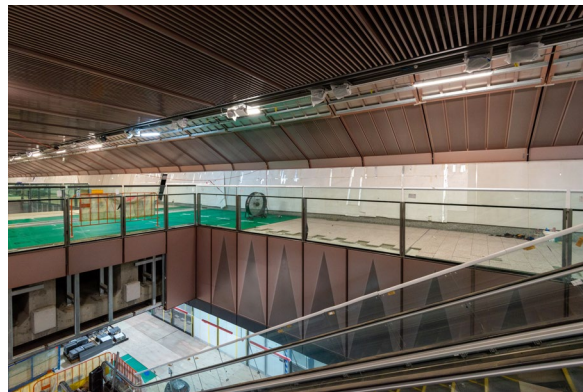
The Cross River Rail Tunnel & Stations team is committed to ensuring our community is kept up-to-date with project information and construction updates.

Feedback about your experience with the team is essential to ensure our communication and engagement with local residents and businesses is effective.

Please follow this QR code to a quick survey. We would appreciate your feedback by Friday 31 October 2025.



- Delivery, installation and assembly of structural steel.
- Mechanical and electrical works including cabling, switchboard installation, heating, ventilation, air conditioning, fire safety mechanisms.
- Fit out including ceiling panels, concrete and aluminium cladding, balustrading, wall and roof sheeting, furniture, signage and tiling.
- Delivery and transport of materials, equipment, and machinery.
- Operation of ventilation fans.
- Site facilities and fencing adjustments. Some traffic changes on Mary Street, road and footpath are required.

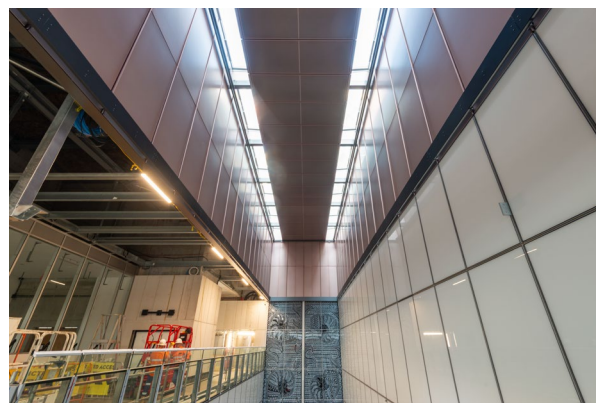


Above: Cladding, balustrading and tiling installation in the underground cavern mezzanine level.

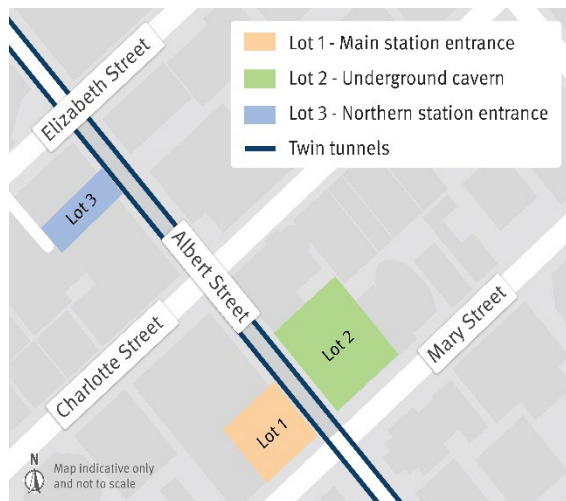
## Lot 3 – Northern station entrance site (142 Albert Street)



- Station façade and roof structure assembly works.
- Station canopy and building fit out including internal panelling and cladding, glass finishes, and steel installation.
- Installing formwork, cutting and fixing of steel reinforcement, scaffolding and minor concrete pours.
- Mechanical and electrical services installation including passenger lifts, ceiling framing, cabling, lighting and wi-fi receivers.
- Site facility adjustments including site fencing changes.
- Ongoing day time intermittent temporary footpath detours in front of the Lot 3 site. Stop-and-go arrangements as required for overhead lifts, deliveries, plant demobilisation, façade, canopy and roof works.
- Intermittent nightly footpath closures from 6:30pm-6:30am for steel façade and canopy installation works.



Above:



## Local streets – Albert Street between Alice and Queen streets: Elizabeth, Charlotte and Mary streets

- Installing, maintaining and removing monitoring equipment and services.
- Utility, borehole and geotechnical investigations and maintenance.
- Manhole relining and sewer maintenance (CCTV).
- Line marking, gantry and facilities adjustments. Closure of Albert Street pedestrian gantry for changes to pedestrian gantry.
- Vegetation maintenance and removal.
- Installation of services and utility connections.
- Ongoing traffic and pedestrian changes required for utilities, concrete pours, mobilising and demobilising cranes and facilities and equipment and works to build the station on Albert, Mary, Charlotte and Elizabeth streets.

## What to expect

There will be an increase in workforce and vehicles at the Albert Street sites for the transport of materials, equipment and machinery.

Nearby residents and businesses may experience an increase in dust, noise and vibration.

For your safety, intermittent pedestrian and traffic holds and diversions will be in place near the worksites during concrete pours and other deliveries to the sites. Please follow directions of traffic controllers.

## Construction hours



**Standard construction: 6:30am – 6:30pm**  
Monday to Saturday.



**Out of hours, 6:30pm – 6:30am**  
Some activities will be completed out of normal construction hours due to traffic permits, safety requirements and construction methodology.



**Underground and support activities**  
24 hours a day, 7 days per week.



1800 010 875



[crossriverrail@cbgujv.com.au](mailto:crossriverrail@cbgujv.com.au)



[crossriverrail.qld.gov.au](http://crossriverrail.qld.gov.au)



If you need an interpreter to assist you in understanding this document, please call the Translating and Interpreting Service (TIS National) on 131 450 and request to be transferred to Multicultural Affairs Queensland on 13 QGOV (13 74 68)

**CROSSRIVERRAIL**  
DELIVERY AUTHORITY

 **Queensland**  
Government