

Works Notice

October and November 2025

Woolloongabba station construction update

Construction of Woolloongabba station is continuing, with trees planted and other landscaping activities now underway around the station entrances.

Inside the station building, works are progressing on key front-of-house areas, including the future ticket office.

Service and utility upgrades are also continuing on nearby roads and footpaths, which will require some temporary changes to traffic conditions.

What to expect during construction:

- Continuing underground and surface works including outside standard hours
- Out-of-hours surface works including hammering, water blasting, steel cutting, drainage works and concrete pumping
- Potential noise, dust and vibration including work outside of standard construction hours
- Temporary lighting for out-of-hours works
- Out-of-hours deliveries of large trucks and plant including mobilisation, set up and demobilisation
- Temporary road works including footpath upgrading works, pavement removal, lighting installation and traffic changes.
- Ongoing intermittent lane, road and footpath detours and closures at Leopard, Main, Gibbon and Stanley streets, and surrounding streets where required.



Above: Trees planted around the Woolloongabba station entrances.

Community Survey

The Cross River Rail Tunnel & Stations team is committed to ensuring our community is kept up-to-date with project information and construction updates.

Feedback about your experience with the team is essential to ensure our communication and engagement with local residents and businesses is effective.

Please follow this QR code to a quick survey. We would appreciate your feedback by Friday 31 October 2025.



Gibbon Street traffic changes

From **early-October 2025 for approximately six weeks**, a full road closure will be in place at the intersection of Gibbon and the Stanley Street service road to install underground services and reinstate the road surface.

The work and traffic changes will take place continuously during day and night. Vehicle detours will be in place via Ipswich Road and Hawthorne Street, with local access to residential properties and businesses maintained. Further notification will be provided.

Details of work

Woolloongabba station and precinct

Main station and tunnel work



- Crane operations during day and night shifts
- Installing glazing, cladding and structural steel in the main station atrium
- Fitting out the station building, services building, canopy structure including baffle ceilings, smoke screens, glass panels, tiled floors and bathroom fixtures
- Mechanical and electrical fit-out within the services building, basement levels, mezzanine and platform levels including balustrades on escalators, fire safety equipment and speakers
- Transporting large plant and vehicles
- Testing and commissioning activities.

Surface and precinct work



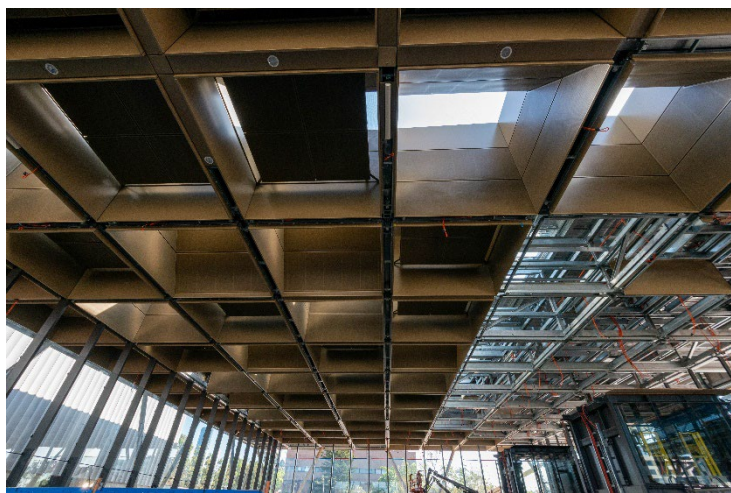
- Mass earthworks around the station, services building and new road and footpath
- Earthworks, formwork, reinforcement and concreting near the Woolloongabba busway station and Main Street
- Utility investigations, surveying, geotechnical works, and service relocations
- Sewer inspections, service installations, and water monitoring in and around the site
- Landscape works.

Surrounding streets and footpaths

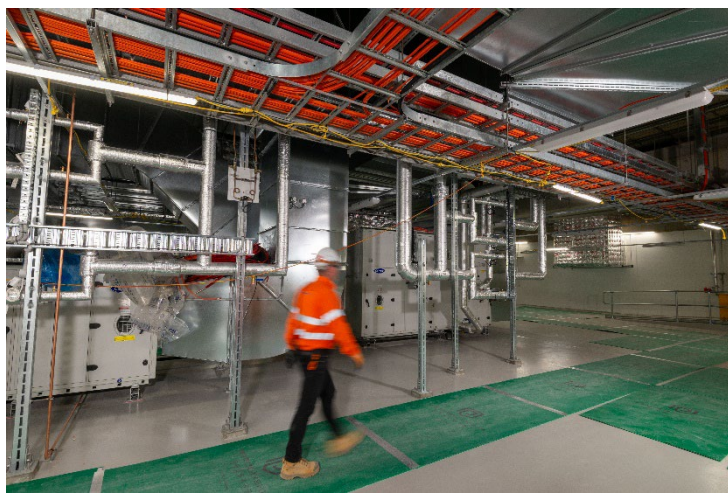


- Utility investigations, surveying, geotechnical works and service relocations on local roads and footpaths
- Linemarking, signage and traffic signal installation on local roads and footpaths.
- Temporary detours and closures for pedestrians and vehicles, as well as ongoing pedestrian changes near Main Street and the busway.

All activities are subject to approvals and weather conditions



Above: Fit out on the canopy structure.



Above: Mechanical and electrical fit out within the back of house area of the station building.

Key: construction work hours

	Standard construction hours 6:30am to 6:30pm, Monday to Saturday.		Out of hours works Some activities will be completed out of normal construction hours, 6.30pm to 6.30am, due to traffic permits, logistics, safety requirements and construction methodology.		Tunnel fit out Tunnel fit out support activities and rail construction are undertaken 24 hours a day.
--	--	--	---	--	---



1800 010 875



crossriverrail@cbgujv.com.au



crossriverrail.qld.gov.au



If you need an interpreter to assist you in understanding this document, please call the Translating and Interpreting Service (TIS National) on 131 450 and request to be transferred to Multicultural Affairs Queensland on 13 QGOV (13 74 68)

CROSSRIVERRAIL
DELIVERY AUTHORITY



Queensland
Government