

Works Notice

September &
October 2025

Merrimac station construction update

Fulton Hogan is continuing major construction activities within the eastern and western rail reserves and Gooding Drive. Further construction work will also continue within the rail corridor.

Major construction

Throughout September and October 2025, from 7:00am to 5:00pm (Monday to Saturday) works will include:

- Retaining wall construction, including concrete pours, back-filling and sealing activities
- Station building enabling works, including pile caps, concrete pours, block work and excavation and installation of ground beams
- Lift shaft and services works, including concrete pours, steel installations and backfilling
- Construction of environmental management controls, drainage channels, environmental monitoring, surveying, sediment fencing, including culvert installations, concrete works and pipe installations
- Station platform works, including steel installations, platform coping, roofing of the platform canopy and installation of pre-cast concrete columns
- Station surface and access road construction, including pavement activities
- Ground treatment and strengthening activities
- Works on public utilities, services, cable hauling and electrical conduit and pit excavation
- Sewer activities including intermittent dewatering works using electric pumps, including out of hours activity where required
- Minor vegetation clearing in accordance with all relevant approvals, with fauna spotter / catchers in attendance
- Ongoing earthworks activities, including stockpiling of materials, excavation, heavy vehicle movements and pre-loading
- Gooding Drive / Station Access Road activities, including night works (see overleaf for more details).

Rail corridor works

Rail corridor works (including night works), are planned to occur outside normal working hours during scheduled track closures, pending construction and weather permitting. Activities will be completed during day and night shifts, 24 hours a day.

Works will include platform construction activities, including steel installations, lift shaft steel framing and pre-cast panel installations, canopy roofing works, heavy vehicle movements, oversized load deliveries, installation of signalling equipment and concrete pouring. Activities are planned on the following dates:

- From 6:00am Saturday 20 September 2025 to 6:00am Saturday 27 September 2025



1800 010 875



merrimacstation@fultonhogan.com.au



crossriverrail.qld.gov.au



If you need an interpreter to assist you in understanding this document, please call the Translating and Interpreting Service (TIS National) on 131 450 and request to be transferred to Multicultural Affairs Queensland on 13 QGOV (13 74 68)

CROSSRIVERRAIL
DELIVERY AUTHORITY



Queensland
Government

Gooding Drive / Station Access Road roadworks

Roadworks will continue on Gooding Drive in both directions through into 2026 (program and weather permitting), including intermittent night works. Gooding Drive activities will include:

- Ongoing retaining wall construction, concreting and backfilling
- Installation and activities on services, including drainage, water main, lighting and utilities
- Kerb and verge works, including demolition activities and heavy vehicle movements
- Road barrier and guard rail movement and installations
- Access road construction, including earthworks, pavement activities and material deliveries.



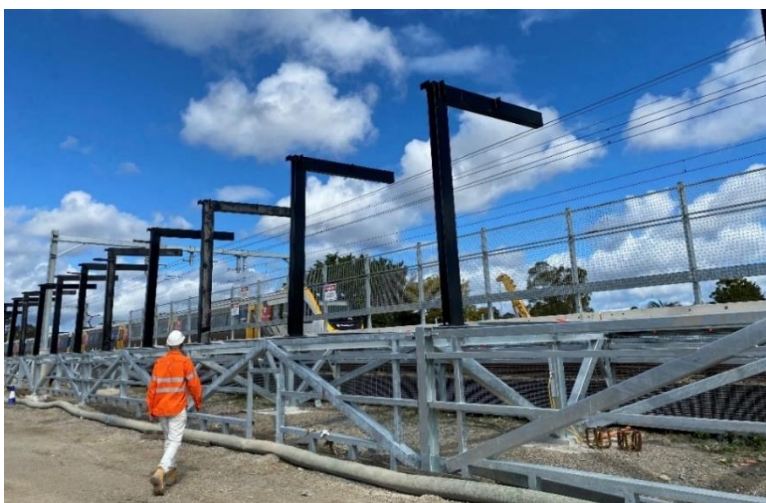
Some activities can only be undertaken at night due to safety and traffic management requirements. Residents located near these activities will receive direct reminders prior to works.

For more information on Gooding Drive Roadworks, see our [Gooding Drive factsheet](#) or scan the QR code.

Standard construction hours	Night works
Works will be undertaken between 7:00am to 5:00pm, Monday to Saturday, and 8:00am to 1:00pm Sunday (where required)	Out of Hours activities will be undertaken from 7:00am to 6:00am, Monday to Sunday

What to expect

- Construction activities may generate increased levels of heavy vehicles, noise, vibration and dust in the area. Every effort will be made to keep these to a minimum
- An increase in worker and construction presence on Gooding Drive, including intermittent noise at night
- Construction activity and heavy vehicle movements will continue to transport materials to the site via Gooding Drive eastbound and westbound
- Ongoing temporary changes to pedestrian access and movements around Gooding Drive footpaths (both directions), Entry Drive and Ghilgai Road
- Changes on local roads, including intermittent parking restrictions and short-term changes to haulage routes
- Intermittent daily single lane closures, speed reductions and short-term delays on Gooding Drive in both directions, between Ghilgai Road and Bourton Road. There will also be lane width reductions, alignment changes and traffic switches on Gooding Drive



Above: station platform and canopy steel installation

- Traffic management and road signage will be in place to assist and direct motorists
- Workers and vehicles accessing site via Entry Drive, Crelga Court, Nisbet Place and Willunga Place
- Intermittent use of mobile lighting towers and safety lighting within the rail reserve and Gooding Drive (both directions). Every effort will be made to position light sources away from properties
- The use of machinery including trucks (including water and fuel carts), graders, excavators, vac trucks, cranes, asphalt pavers, profilers, drill and piling rigs, earth moving and concreting machinery, rollers, chainsaws, boom lifts, vibration hammers, cable hauling equipment and hand-held tools.



1800 010 875



merrimacstation@fultonhogan.com.au



crossriverrail.qld.gov.au



If you need an interpreter to assist you in understanding this document, please call the Translating and Interpreting Service (TIS National) on 131 450 and request to be transferred to Multicultural Affairs Queensland on 13 QGOV (13 74 68)

CROSSRIVERRAIL
DELIVERY AUTHORITY



Queensland
Government

Works areas and vehicle movements



Changes to the way you travel

From Saturday 20 September to Sunday 12 October 2025, there will be major track closures and travel changes on the Beenleigh and Gold Coast lines. Some journeys may take significantly longer than usual.

Please consider your travel options, plan ahead and allow extra travel time by downloading the Translink app, visiting translink.com.au or calling 13 12 30.

Project information

For more information about the project, visit www.crossriversrail.qld.gov.au. Scan the QR code to register to receive monthly project updates via email.

To speak with a member of the project team, please contact 1800 010 875 or email merrimacstation@fultonhogan.com.au

To view and provide feedback on Fulton Hogan's Communication and Engagement Strategy, please contact the project team.



Merrimac



1800 010 875



merrimacstation@fultonhogan.com.au



crossriversrail.qld.gov.au



If you need an interpreter to assist you in understanding this document, please call the Translating and Interpreting Service (TIS National) on 131 450 and request to be transferred to Multicultural Affairs Queensland on 13 QGOV (13 74 68)

CROSSRIVERRAIL
DELIVERY AUTHORITY



Queensland
Government