

The background of the entire page is a dark blue map. It shows a river winding through a city grid. The river is a lighter shade of blue, and the city streets are represented by a network of thin, light blue lines. The map is oriented with the river flowing from the top left towards the bottom right.

Cross River Rail Project

Monthly Environmental Report

June 2025

Table of Contents

Executive Summary	3
Non-Compliance Events	7
Definitions	8
1. Introduction	9
1.1. Background	9
1.2. Project Delivery	9
1.3. Reporting Framework	11
1.4. Monthly Environment Report Endorsement	11
2. Compliance Review	11
2.1. Relevant Project Works	11
2.2. Key Environmental Elements	13
2.2.1. Noise	13
2.2.2. Vibration	14
2.2.3. Air Quality	14
2.2.4. Water Quality	16
2.2.5. Erosion and Sediment Control	19
2.3. Complaints Management	19
2.4. New Upcoming Project Works	21
2.5. Non-Compliance Events	23
Appendix A RIS Monthly Report	24
Appendix B TSD Monthly Report	25

Executive Summary

This Monthly Environmental Report (MER) has been produced for Project Works undertaken on site for June 2025 for the Rail, Integration and Systems (RIS), and Tunnel, Stations and Development (TSD) packages. The report addresses the obligations outlined in the Coordinator-General's change report – *Coordinator-General's change report – no. 15 (March 2025)* and the individual contractor's Construction Environmental Management Plans (CEMPs), which have been developed generally in accordance with the Project's Outline Environmental Management Plan (OEMP). The Cross River Rail Delivery Authority (Delivery Authority), as the Proponent of the Cross River Rail Project, is required to submit a monthly report to the Coordinator-General to demonstrate compliance with the imposed conditions.

Section 1 of this report provides a background to the project and the Coordinator-General's conditions. Section 2 provides a review of the contractor's reports contained in **Appendix A** (RIS Monthly Report) and **Appendix B** (TSD Monthly Report).

The Environmental Monitor (EM) has reviewed and endorsed this MER. This endorsement follows ongoing and new document reviews, and surveillance across the relevant project worksites.

The CEMPs prepared by both Unity Alliance (RIS Contractor) and CBGU JV on behalf of Pulse (TSD Contractor) for their Relevant Project Works were endorsed by the EM and submitted to the Coordinator-General in accordance with Condition 4(a) and 4(b) respectively.

The table below presents a summary of compliance status against each condition with a short comment for each:

Imposed Condition	Requirement Summary	Compliance Met (Yes/No/NA)	Comment
1.	General conditions – compliance with the Project Changes relevant to the contractor's scope	Yes	The CEMP and site management plans are in accordance with the Project Changes.
2.	Outline Environmental Management Plan – timely submission to the Coordinator-General including required sub-plans	Yes	OEMP dated June 2020 is effective for the reporting period.
3.	Design – achievement of the Environmental Design Requirements	NA	Ongoing progress with design packages.
4.	Construction Environmental Management Plan – all relating to Relevant Project Works.	Yes	RIS – CEMP Revision 13 covering full scope of RIS works is effective from 14 March 2022. TSD – CEMP Revision 12 covering full scope of TSD works is effective from 6 June 2024.
5.	Compliance and Incident management – Non-compliance events, notifications and reporting.	Yes	No Non-Compliance Event (NCE) was reported in June 2025.

Imposed Condition	Requirement Summary	Compliance Met (Yes/No/NA)	Comment
6.	Reporting – Monthly and Annual reporting.	Yes	This MER, including RIS and TSD Monthly Reports, has been submitted in accordance with the conditioned requirements. Refer to Appendix A and Appendix B .
7.	Environmental Monitor (EM) – engaged and functions resumed.	Yes	Ongoing weekly site inspections and document reviews continue to take place.
8.	Community Relations Monitor (CRM) – engaged and functions resumed.	Yes	Ongoing.
9.	Community Engagement Plan – developed and endorsed by Environmental Monitor.	Yes	CEMPs endorsed with Community Engagement Plan.
10.	Hours of work – Project Works undertaken during approved hours.	Yes	Project Works have been undertaken in accordance with project requirements. This has been achieved through Standard Working Hours, Extended work hours and Managed Work.
11.	Noise – Project Works must aim to achieve internal noise goals for human health and well-being.	Yes	Noise monitoring met project noise requirements at Sensitive Places. RIS – Noise monitoring was undertaken to monitor construction impacts at sensitive places. Noise monitoring confirmed project requirements were met. Refer to Appendix A (Section 2.1 and Table 1). TSD – Noise monitoring was undertaken to monitor construction impacts at sensitive places. Noise monitoring confirmed project requirements were met. Refer to Appendix B (Section 3.2 and Table 3).
	Vibration – Project Works must aim to achieve vibration goals for cosmetic damage, human comfort and sensitive building contents.	Yes	Vibration monitoring met project requirements at Sensitive Places. RIS – Vibration monitoring occurred at the John MacDonald Stand and at Clapham Yard. The contractor confirmed the monitoring results met project requirements. See Appendix A (Section 2.2 and Table 2). TSD – No vibration monitoring was undertaken.
12.	Property damage – relating to ground movement.	Yes	RIS – Vibration modelling has been undertaken for Relevant Project Works, and Property Damage Sub-plans have been developed and implemented. Pre-

Imposed Condition	Requirement Summary	Compliance Met (Yes/No/NA)	Comment
			<p>condition surveys have been completed at heritage, commercial and residential buildings at RNA, Northern Corridor and Dutton Park to Salisbury stations.</p> <p>TSD – Vibration modelling has been prepared and is ongoing. Where required, building condition survey reports are completed for heritage and residential buildings.</p>
13.	Air quality – Works must aim to achieve air quality goals for human health and nuisance.	Yes	<p>Air quality monitoring met Project air quality requirements.</p> <p>RIS – Contractor confirmed they continued to meet the requirements under Condition 13 and the OEMP. Refer to Appendix A (Section 2.3 and Table 3, plus Figures 1, 2, and 3).</p> <p>TSD – Contractor confirmed they continued to meet the requirements under Condition 13 and the OEMP. Refer to Appendix B (Section 3.3 and Table 4 and 5).</p>
14.	Traffic and transport – Works must minimise adverse impacts on road safety and traffic flow.	Yes	Traffic Management Plans are covered in the CEMPs. Sub-plans for all active worksites have been reviewed by the EM.
15.	<p>Water quality – Works must not discharge groundwater from the construction site above the relevant environmental values and water quality objectives.</p> <p>Monitor and report on water quality in accordance with CEMP and Sub-plans.</p>	Yes	<p>Monitoring and reporting on groundwater and surface water quality was undertaken in accordance with RIS and TSD Water Quality Management Plans.</p> <p>RIS – No groundwater discharges occurred during May 2025.</p> <p>Post rainfall monitoring was triggered as per Condition 15(b). Refer to Appendix A (Section 2.4 and Figure 4) for further information.</p> <p>TSD – Active discharge of groundwater occurred from Woolloongabba and Boggo Road. Monitoring results of groundwater quality prior to discharge is consistent with the pre-construction water quality levels. Refer to Appendix B (Section 3.4.1 and Table 6) for groundwater monitoring results.</p> <p>Surface water discharges occurred at the Northern and Southern Portals. The monitoring results demonstrated surface water discharges met project water quality discharge criteria. Refer to Appendix B</p>

Imposed Condition	Requirement Summary	Compliance Met (Yes/No/NA)	Comment
			(Section 3.4.2 and Table 7) for surface water monitoring results. Post rainfall and routine surface water monitoring occurred across TSD project sites. The TSD contractor confirmed the project outcomes were met. Refer to Appendix B (Section 3.5 and Table 8) for further details.
16.	Water resources – Evaluate potential impact, plan works, implement controls and monitor inflow of groundwater associated with drawdown.	Yes	RIS – There is no sustained groundwater extraction involved in the RIS scope of works so predictive modelling of groundwater drawdown is not required. Collection of hydrological data to model potential inflow rates into excavations during construction has been undertaken. TSD – Inflow of groundwater into the worksites is being continuously monitored to validate the predictive modelling.
17.	Surface water – Must be designed to avoid inundation from stormwater due to a 2-year (6hr) ARI rainfall event and flood waters due to a 5-year ARI rainfall event and constructed to avoid afflux or cause the redirection of uncontrolled surface water flows, including stormwater flows, outside of worksites.	Yes	Contractors continue to consider this condition in their site planning and design.
18.	Erosion and sediment control – Provisions for erosion and sediment control must be consistent with the Guidelines for Best Practice Erosion and Sediment Control (International Erosion Control Association, 2008) and the Department of Transport and Main Roads' Technical Standard MRTS52.	Yes	Site specific ESC plans for all active work sites have been reviewed by the EM and implemented on site.
19.	Acid sulfate soils – managed as per the Queensland Acid Sulfate Soil Technical Manual.	Yes	Acid Sulfate Soil Management Plans have been prepared and implemented for all active worksites.
20.	Landscape and open space – general requirement to minimise impacts on landscapes and open space values and specific requirements around Victoria Park.	Yes	The construction of a temporary access road through Victoria Park was undertaken under a Heritage Exemption Certificate approved by the Department of the Environment, Tourism, Science and Innovation (DETSI) on 24 July 2021. Consideration has been taken to minimise loss of trees and the area of park impacted during these temporary

Imposed Condition	Requirement Summary	Compliance Met (Yes/No/NA)	Comment
			works. Replanting works have occurred.
21.	Worksite rehabilitation – worksites rehabilitated as soon as practicable upon completion of works or commissioning, and in consultation with Brisbane City Council.	N/A	N/A

Non-Compliance Events

There were no NCEs recorded in June 2025.

Definitions

Acronym	Definition
ARI	Average Recurrence Interval – The average or expected value of the periods between exceedances of a given rainfall total accumulated over a given duration.
CEMP	Construction Environmental Management Plan
CGCR	Coordinator-General's Change Report
CRM	The Community Relations Monitor engaged in accordance with Imposed Condition 8
Contractor	The contractors appointed to design, construct, and commission the Project
Coordinator-General	The corporation sole preserved, continued, and constituted under section 8 of the SDPWO Act.
CRR	Cross River Rail
DAP	Directly Affected Persons
DETSI	Department of Environment, Tourism, Science and Innovation
EIS	Environmental Impact Statement
EM	The Environmental Monitor engaged in accordance with Imposed Condition 7
ESC	Erosion and sediment control
IECA	International Erosion Control Association
Imposed condition/s	A condition/s imposed by the Coordinator-General under section 54B of the SDPWO Act for the Project
MER	Monthly Environment Report
MRTS52	Transport and Main Roads Specifications MRTS52 Erosion and Sediment Control
NCE	Non-Compliance Event
OEMP	Outline Environmental Management Plan
Project	The Cross River Rail Project
Project Works	As defined in the Imposed Conditions
Proponent	The Cross River Rail Delivery Authority
RfPC	Request for Project Change
RIS	Rail, Integration and Systems
SDPWO Act	<i>State Development and Public Works Organisation Act 1971</i>
Sub-plan	Any sub-plan of the CEMP
The Delivery Authority	The Cross River Rail Delivery Authority
TSD	Tunnel, Stations and Development

1. Introduction

1.1. Background

The Cross River Rail Project (the Project) is a declared coordinated project under the *State Development and Public Works Organisation Act 1971* (SDPWO Act). The CRR Environmental Impact Statement (EIS) was evaluated by the Coordinator-General who recommended the Project proceed, subject to Imposed Conditions and recommendations. Since the evaluation of the EIS, several Requests for Project Change (RfPC) submissions have been evaluated by the Coordinator-General. RfPC 15 was endorsed on 07 March 2025 by the Coordinator-General.

The Coordinator-General has imposed conditions on the Project that apply throughout the design, construction, and commissioning phases. These are referred to as the Imposed Conditions. In addition, the Coordinator-General has approved the Project's OEMP which outlines the environmental management framework for the Project. The OEMP includes environmental outcomes and performance criteria which must be achieved for the Project.

Imposed Conditions 5 and 6 nominate the compliance and reporting requirements for the Project. This monthly report addresses these requirements.

1.2. Project Delivery

The Delivery Authority is responsible for planning and delivering the Project. The Project established environmental management plans and secured some of the secondary environmental approvals in addition to enabling works.

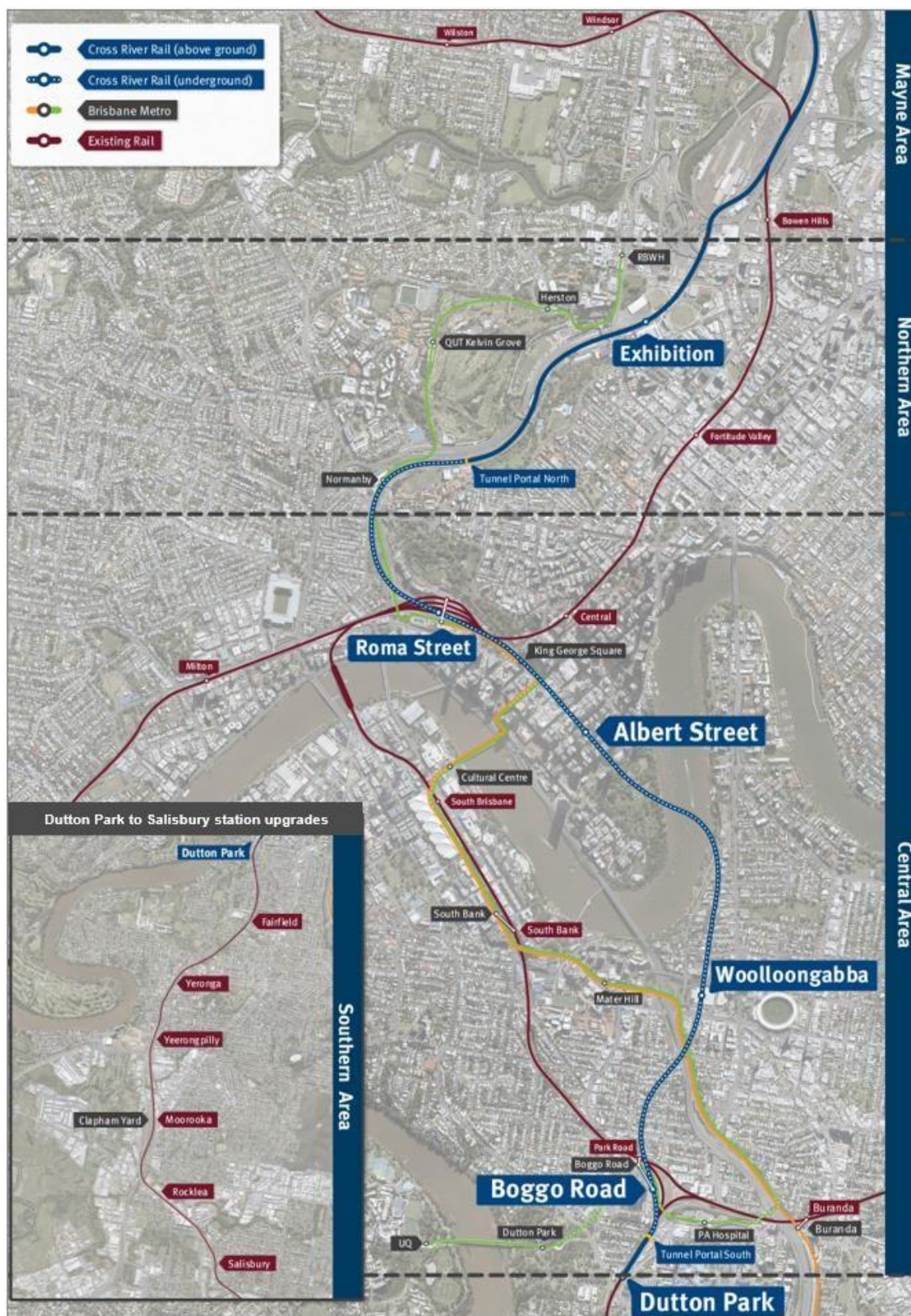
The two main delivery packages which require reporting under the Coordinator-General's imposed conditions are:

- Tunnel, Stations and Development (TSD) being delivered by CBGU JV; and
- Rail, Integration and Systems (RIS) being delivered by Unity Alliance.

The Project is geographically divided into four areas:

- Mayne Area;
- Northern Area;
- Central Area; and
- Southern Area.

These areas and delivery packages are shown in the figure below.



1.3. Reporting Framework

This MER has been prepared to comply with Imposed Conditions 6 and 7 of the Coordinator-General Change Report (CGCR) and includes:

- monitoring data and associated interpretation of the results required by the imposed conditions and Construction Environmental Management Plan (CEMP);
- details of any NCEs, including incidents, corrective actions, and preventative actions; and
- details of any complaints, including description, responses, and corrective actions.

Reporting on environmental elements captured in each monthly environmental report, including the annual environmental report, is reviewed and endorsed by the EM.

1.4. Monthly Environment Report Endorsement

This MER has been endorsed by the EM and the endorsement provided to the Coordinator-General.

2. Compliance Review

This MER has been reviewed and endorsed by the EM as per Imposed Condition 7 of the CGCR.

2.1. Relevant Project Works

The following Project Works were undertaken in June 2025:

Area	Project Works
Mayne Area	Mayne Yard North – <ul style="list-style-type: none">• Practical Completion (PC) Part 2 submitted. Mayne Yard East – <ul style="list-style-type: none">• Footpath installation ongoing;• Signal and OHLE foundations ongoing;• Tier 1 Stabling Yard Fence continuing;• Drainage and Combined Services Route (CSR) ongoing in Mayne East entry roads and Mayne neck;• Yard lighting fixtures handed over to testing and commissioning (T&C); and• Low voltage (LV), comms cabling terminations and testing ongoing.
Northern Area	RNA / Exhibition – <ul style="list-style-type: none">• TransLink faregate commissioning completed;• T&C of LV systems continuing;• Museum link area progressed with lighting, paving and fencing; and• Demobilisation of Ekka compound commenced. Northern Corridor – <ul style="list-style-type: none">• Northern Portal ERS remains waiting handover from TSD to complete T&C;• Corridor rail furniture installation;• Existing route investigations and removal of redundant cabling;• Corridor drainage and RMAR completions;• Final defect close out ongoing.
Central Area	Roma Street – <ul style="list-style-type: none">• Pocket Park – service investigation and Makerston Street planning progressed;• Canopy access scaffold continues and glazing to external elevations in progress;• Lift 3 and 4 installation nearing completion;• Fit-out of escalators ongoing;• Cladding installation continues along with panels; and• In the cavern – Back of House (BoH) services installation continues, escalator finishes in progress, tiling ongoing and hydraulic rough into platform completed. Albert Street – <ul style="list-style-type: none">• Lot 1 – continuing ongoing internal Jump Form cycle pours above ground level (Jump 23 commenced), M&E fit-out and blockwork nearing completion and

Area	Project Works
	<p>glass wall install to VT zone is nearing completion;</p> <ul style="list-style-type: none"> • Lot 2 – BoH M&E fit-out, cladding panels install adjacent to baffle ceiling ongoing and under-escalator rooms painting nearing completed with balustrade installation commenced; • Lot 3 – Epoxy and waterproofing flooring install nearing completion with escalator installation continuing; and • Green Spine – Ongoing. <p>Woolloongabba –</p> <ul style="list-style-type: none"> • Canopy façade glazing ongoing; • East West Road works ongoing; • Baffle ceiling at B6 ongoing; • Water feature installation continues; and • Escalator fitout in progress. <p>Tunnel fit-out –</p> <ul style="list-style-type: none"> • Ongoing M&E fit-out works in the cross passages and tunnel with tunnel fit-out works nearing completion. <p>Boggo Road –</p> <ul style="list-style-type: none"> • Concrete to in situ structure nearing completion; • Reinforcement to in situ structure nearing completion; • Continuing above ground structure construction; • BoH M&E fit-out ongoing; and • Canopy installation continues across multiple stages. <p>Southern Portal –</p> <ul style="list-style-type: none"> • Yamma Bridge – East approach topping slab completed and western lift installation commenced; • Open shaft closure at Boggo South continues; and • Portal – fit-out continues.
Southern Area	<p>Southern / Dutton Park –</p> <ul style="list-style-type: none"> • Indigenous artworks installed; • Progressed with general corridor completion works such as corridor drainage civils and completions during SCAS works; • FRP works of retaining wall along Kent Street continues; • Fibre terminations and testing; and • Design work ongoing with Kent St. <p>Yeerongpilly station –</p> <ul style="list-style-type: none"> • PC Part 2 submitted. <p>Clapham Yard –</p> <ul style="list-style-type: none"> • Phase 2 fencing scope balance ongoing; • Crew Maintenance Facility building FRP foundations and walls continues; • Ongoing drainage, earthworks and hydraulics scope; • CSR works ongoing; and • Chale Street carpark completed. <p>Moorooka station –</p> <ul style="list-style-type: none"> • Moorooka station retaining wall works commenced • Station and car park finalised with utilities design progressing; • Procurement of key packages underway; and • Temporary Ipswich Road traffic signal design underway. <p>Rocklea station –</p> <ul style="list-style-type: none"> • PC Part 2 submitted. <p>Salisbury –</p> <ul style="list-style-type: none"> • Platform 1 and 2: service fit off and painting ongoing, edge brackets continues and canopy rough in and sheeting completed whilst building fit-out continued; • Platform 3: platform slabs ongoing; • Overpass stair screens; • Ticket window installed; • Dollis Street and Lillian Avenue precinct works ongoing; and • Gantry crane removed.

2.2. Key Environmental Elements

2.2.1. Noise

The Coordinator-General's conditions establish a framework for managing the impacts of noise. The Imposed Conditions do not establish noise limits. Compliance with the Imposed Conditions noise requirements involve demonstrating the implementation of the endorsed CEMP and associated Noise and Vibration Management Plan. This establishes the management measures to be applied which aims to achieve the identified noise goals as far as reasonably practicable. The CEMP also includes requirements for the provision of the required community notifications of upcoming work, potential impacts, and how the project team can be contacted in relation to any potential impacts.

For Project Works where potential noise impacts are modelled to be above the noise goal but below the noise goal plus 20dBA, this work is authorised where the endorsed CEMP and associated Noise and Vibration Management Plan is being implemented, including communicating construction activities to potential and actual Directly Affected Persons (DAPs). For Project Works where potential noise impacts are predicted to be more than 20dBA above the relevant noise goal, specific engagement is required with DAPs for these works.

Where internal monitoring was not possible, contractors have undertaken external monitoring at nominated locations. To assess external monitoring and determine compliance with the project's noise requirements, the project applies recommended façade attenuation corrections, which considers receiver property type.

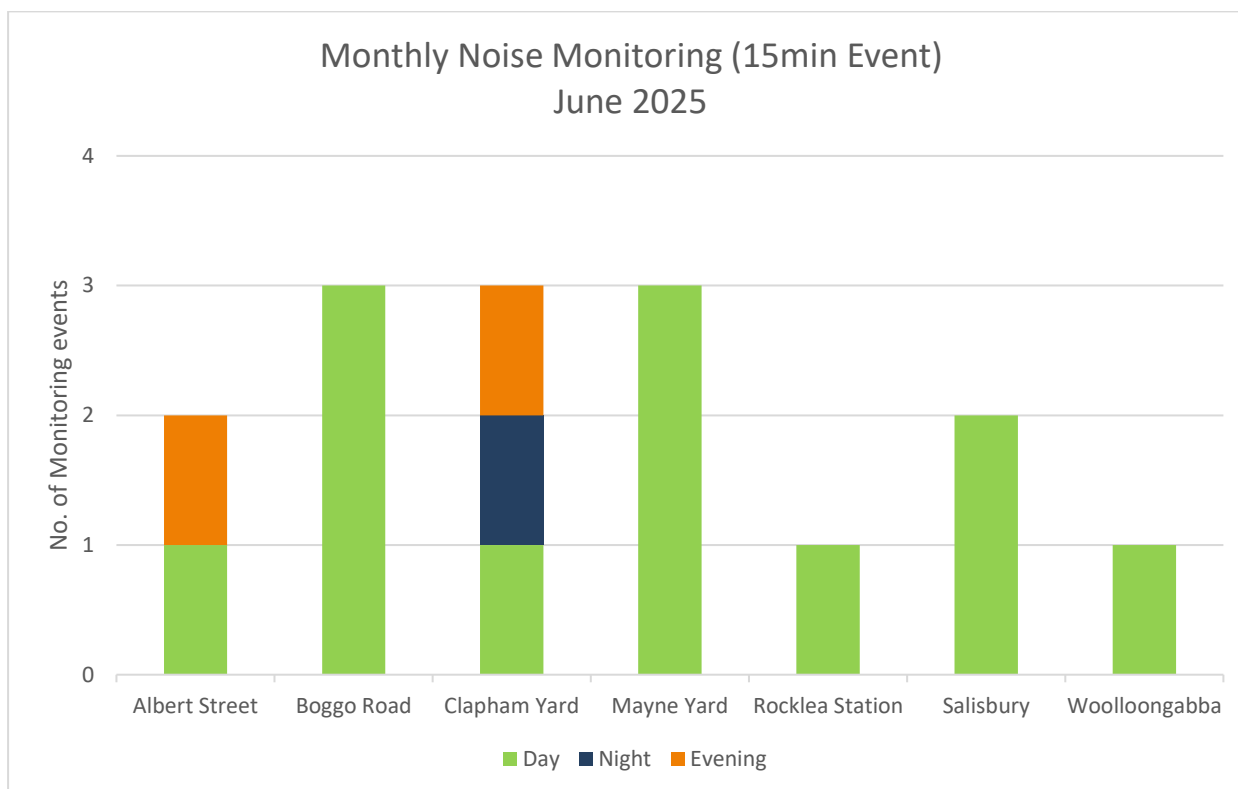
In the Mayne Area, noise monitoring was undertaken to monitor construction impacts at sensitive places for signalling and track works and rail overhead lines works at Mayne Yard. The RIS contractor reported that the project noise requirements have been met during this reporting month. Monitoring results for the Mayne Area are detailed in **Appendix A** (Section 2.1 and Table 1).

In the Central Area, noise monitoring was undertaken to monitor for model verification and construction monitoring at sensitive places for demolition works at Albert Street, for model verification of concrete works at Woolloongabba Station and for model verification of demolition and equipment demobilisation at Boggo Road. The TSD contractor reported that the project noise requirements have been met during this reporting month. Monitoring results for the Central Area are detailed in **Appendix B** (Section 3.2 and Table 3).

In the Southern Area, noise monitoring was undertaken to monitor construction impacts at sensitive places for rail overhead lines works at Rocklea station, excavation and rail track works at Clapham Yard and for excavation and station works at Salisbury. The RIS contractor reported that the project noise requirements have been met during this reporting month. Monitoring results for the Southern Area are detailed in **Appendix A** (Section 2.1 and Table 1).

All works, including the Out of Hours works, have been previously assessed and monitored for similar activities. Subsequently these works and their potential noise levels were deemed consistent with previous monitoring undertaken for the project across the relevant locations.

A summary of noise monitoring events for the month is provided in the chart below.



2.2.2. Vibration

In the Northern Area, vibration monitoring occurred at the State heritage listed John MacDonald Stand located in proximity to the Exhibition station worksite. The contractor commenced demobilising from RNA in June 2025 and will cease monitoring once fully demobilised. The RIS contractor reported the vibration requirements have been met. Monitoring results are detailed in **Appendix A** (Section 2.2 and Table 1).

In the Southern Area, vibration monitoring occurred on Evesham street at Clapham Yard. The RIS contractor reported the vibration requirements have been met. Monitoring results are detailed in **Appendix A** (Section 2.2 and Table 1).

For the Mayne and Central Areas, no vibration monitoring was undertaken during the period and no complaint-based vibration monitoring was triggered.

2.2.3. Air Quality

2.2.3.1. Dust Deposition

Dust deposition monitoring was conducted at Mayne, Northern, Central and Southern Areas. Results met the project air quality goal¹ for all active worksites. See **Appendix A** (Section 2.3.1, Table 3 and Figure 1) and **Appendix B** (Section 3.3.1 and Table 4).

A summary of the dust deposition results for the reporting period are in the table below.

Air Quality – Dust Deposition Monitoring			
Area	Worksite	Monitoring Location	Comments
Mayne Area	Mayne Yard	Mayne Yard North	- Results met air quality goal.
Northern Area	RNA / Exhibition	RNA Showgrounds	- Results met air quality goal.
	Northern Portal	Northern Portal (near Brisbane Girls Grammar School)	- Results met air quality goal.
Central Area	Albert Street	Mary Street	- Results met air quality goal.
		Elizabeth Street	- Results met air quality goal.
	Boggo Road	Quarry Street (north of the site)	- Results met air quality goal.
		Peter Doherty Street/Leukaemia Foundation	- Results met air quality goal.
	Southern Portal	PA Hospital - Central Energy Unit along Kent Street	- Results met air quality goal.
	Roma Street	Roma Street station	- Results met air quality goal, but the sampling bottle and funnel were damaged, so no data was available in the reporting month.
	Woolloongabba	Russian Orthodox Cathedral	- Results met air quality goal.
		Woolloongabba Busway	- Results met air quality goal.
Southern Area	Dutton Park	Kent Street	- Results met air quality goal.
	Yeerongpilly	Yeerongpilly	- Results met air quality goal.
	Clapham Yard	Clapham Yard	- Results met air quality goal.
	Salisbury	Salisbury station car park	- Results met air quality goal, but the dust deposition gauge had been tampered with, so no data was available in the reporting month.
		Salisbury Fairlie Terrace	- Results met air quality goal.

¹CG air quality goal for dust deposition - 120µg/m² (over an averaging period of 30 days).

2.2.3.2. Particulate Matter and Total Suspended Particulates

Monitoring for particulate matter (PM₁₀) and total suspended particulates (TSP) was conducted at Mayne, Northern, Central and Southern Area worksites during the reporting period. Both contractors confirmed their results obtained throughout the month met the project goals at all active worksites.

In the Northern Area, following on from the previous reporting period technical difficulties, the issues were resolved on 3 June 2025 for the mobile air quality unit at RNA. The contractor confirmed construction works were appropriately managed according to the air quality management plan. Dust mitigation measures were in place and no dust-related complaints were received, ensuring the contractor met the project goals set out by the Imposed Conditions. The contractor commenced demobilising from RNA in June 2025. Air quality monitoring will cease once fully demobilised. Refer to **Appendix A** (Section 2.3.3 and Figure 2 and 3) for further information.

In the Central Area, the Woolloongabba air quality monitoring unit continued to experience technical difficulties throughout June 2025. The unit was sent to the technician for examination on 16 June 2025 for further investigation. The Albert Street air quality monitor experienced intermittent technical difficulties throughout June 2025. Furthermore, the Boggo Road air quality monitor experienced technical difficulties on 30 June 2025. As soon as practicable, the units were inspected, and the issue was resolved. The location of the Albert Street air quality monitor prohibits sufficient sunlight to power the device, consequently, the Contractor has relocated the monitor to a new location on Mary Street to mitigate this problem. The nearby DETSI (Brisbane CBD, Woolloongabba and South Brisbane) air quality monitoring stations confirmed air quality levels were below the air quality goals during the outage periods. Refer to **Appendix B** (Section 3.3.2, Table 5 and Figure 1, 2 and 3).

In the Southern Area, the Clapham Yard mobile air quality unit experienced technical issues on 7, 29 and 30 June 2025. Troubleshooting in accordance with the manufacturer's recommendations resolved the issue. The contractor confirmed construction works were appropriately managed according to the air quality management plan. Dust mitigation measures were in place and no dust-related complaints were received, ensuring the contractor met the project goals set out by the Imposed Conditions. Refer to **Appendix A** (Section 2.3.3 and Figure 2 and 3) for further information.

A summary of particulate monitoring is provided in the table below:

Air Quality – PM ₁₀ / TSP Monitoring			
Area	Worksite	Monitoring Location	Comments
Mayne Area	Mayne Yard	Mayne Yard East	- Results met air quality goals.
Northern Area	RNA / Exhibition	RNA showgrounds	- Results met air quality goals. - Technical difficulties until 3 June 2025.
Central Area	Albert Street	iStay River City and Capri (Corner of Mary Street and Albert Street)	- Results met air quality goals. - Technical difficulties experienced throughout the reporting period.
	Boggo Road / Southern Portal	North-East of Boggo Road worksite	- Results met air quality goals. - Technical difficulties experienced on 30 June 2025.
	Woolloongabba	Place Park, Woolloongabba	- Results met air quality goals. - Technical difficulties experienced throughout the reporting period with the unit sent to the technical on 16 June 2025 for further investigation.
Southern Area	Clapham Yard	Clapham Yard	- Results met air quality goals. - Technical difficulties experienced on 7, 29, 30 June 2025

2.2.4. Water Quality

Water quality monitoring and reporting was undertaken in accordance with the contractors CEMP and Water Quality Management Plans.

2.2.4.1. Surface Water

During June 2025, active surface water discharges occurred in the Northern, Central and Southern Areas and post-rainfall water quality monitoring was triggered in the Northern, Central and Southern Areas.

In the Northern Area, active surface water discharge monitoring occurred on five (5) occasions at Northern Portal. One (1) monitoring result for the previous reporting period was included in this month's report for Northern Portal. The monitoring results demonstrated active surface water discharges met project water quality discharge criteria. Refer to **Appendix B** (Section 3.4.2 and Table 7) for further details. Post-rainfall monitoring was triggered in the receiving waters of Northern Portal on 2 June 2025. The results reflect the condition of the broader catchment upstream from the worksite. Refer to **Appendix B** (Section 3.5 and Table 8) for further details.

In the Central Area, active surface water discharge monitoring occurred on one (1) occasion at Southern Portal. The monitoring results demonstrated active surface water discharges met project water quality discharge criteria. Refer to **Appendix B** (Section 3.4.2 and Table 7) for further details. Post-rainfall monitoring was triggered in the receiving waters of Roma Street, Albert Street, Woolloongabba and Boggo Road on 2 June 2025. The results reflect the condition of the broader catchment upstream from the worksites. Refer to **Appendix B** (Section 3.5 and Table 8) for further details.

In the Southern Area, post-rainfall monitoring was triggered on 31 of May and tested on 1 June 2025 in receiving waters of Salisbury station and Clapham Yard. The results reflect the condition of the broader catchment upstream from the worksites. Refer to **Appendix A** (Section 2.4, Figure 4 and Table 4) for further details.

Routine surface water monitoring was undertaken across the TSD worksites during the reporting period in conjunction with post-rainfall monitoring. Results from the locations reflect the condition of the broader catchment upstream from the worksites. Refer to **Appendix B** (Section 3.5 and Table 8) for further details.

Surface water quality monitoring is summarised in the table below:

Surface Water Quality Monitoring					
Area	Worksite	Discharge	Post-Rain Monitoring	Routine Monitoring	Comments
Mayne Area	Mayne Yard North	No	No	No	- ESC was implemented in accordance with site specific ESC Plan.
Northern Area	Exhibition / RNA	No	No	No	- ESC was implemented in accordance with site specific ESC Plan.
	Northern Portal	Yes	Yes	Yes	- Active surface water discharge met water quality investigation criteria. - Post-rainfall monitoring undertaken. - Routine in-stream monitoring undertaken in accordance with WQMP. - ESC was implemented in accordance with site specific ESC Plan.
	Northern Corridor	No	No	No	- ESC was implemented in accordance with site specific ESC Plan.
Central Area	Albert Street	No	Yes	Yes	- Post-rainfall monitoring undertaken. - Routine in-stream monitoring undertaken in accordance with WQMP.

Surface Water Quality Monitoring					
Area	Worksite	Discharge	Post-Rain Monitoring	Routine Monitoring	Comments
					- ESC was implemented in accordance with site specific ESC Plan.
	Boggo Road	No	Yes	Yes	- Post-rainfall monitoring undertaken. - Routine in-stream monitoring undertaken in accordance with WQMP. - ESC was implemented in accordance with site specific ESC Plan.
	Roma Street	No	Yes	Yes	- Post-rainfall monitoring undertaken. - Routine in-stream monitoring undertaken in accordance with WQMP. - ESC was implemented in accordance with site specific ESC Plan.
	Woolloongabba	No	Yes	Yes	- Post-rainfall monitoring undertaken. - Routine in-stream monitoring undertaken in accordance with WQMP. - ESC was implemented in accordance with site specific ESC Plan.
	Southern Portal	Yes	No	Yes	- Active surface water discharge met water quality investigation criteria. - Routine in-stream monitoring undertaken in accordance with WQMP. - ESC was implemented in accordance with site specific ESC Plan.
Southern Area	Dutton Park	No	No	No	- ESC was implemented in accordance with site specific ESC Plan.
	Clapham Yard	No	Yes	No	- Post-rainfall monitoring undertaken, but the results will be included in the July report. - ESC was implemented in accordance with site specific ESC Plan.
	Salisbury	No	Yes	No	- Post-rainfall monitoring undertaken, but the results will be included in the June report. - ESC was implemented in accordance with site specific ESC Plan.

2.2.4.2. Groundwater

Groundwater discharge occurred at Woolloongabba and Boggo Road. The groundwater discharge results exceeded relevant water quality objectives (WQOs)² for several water quality parameters. However, these results are consistent with the receiving environment baseline monitoring pre-

construction data. The contractor confirmed no changes have occurred onsite to the construction methodologies that would have affected the groundwater results. Water treatment plant results will be reported quarterly. Refer to **Appendix B** (Section 3.4.1 and Table 6) for further details.

There were no groundwater discharges at Mayne, Northern or Southern Area worksites. Groundwater quality monitoring is summarised in the table below:

Groundwater Quality Monitoring			
Area	Worksite	Discharge	Comments
Mayne Area	Mayne Yard North	No	- No groundwater discharges.
Northern Area	RNA / Exhibition	No	- No groundwater discharges.
	Northern Portal	No	- No groundwater discharges.
Central Area	Albert Street	No	- No groundwater discharges.
	Boggo Road / Southern Portal	Yes	- Discharge of groundwater met Project requirements.
	Roma Street	No	- No groundwater discharges.
	Woolloongabba	Yes	- Discharge of groundwater met Project requirements.
Southern Area	Clapham Yard	No	- No groundwater discharges.

¹ The Brisbane River Estuary environmental values and water quality objectives (Basin no 143 – mid-estuary) in the Environmental Protection (Water) Policy 2009

2.2.5. Erosion and Sediment Control

Site specific Erosion and Sediment Control (ESC) Plans have been prepared, updated, and implemented at Mayne Yard, RNA Showgrounds, Normanby, Northern Portal, Roma Street, Albert Street, Woolloongabba, Boggo Road, Southern Portal, Southern, Dutton Park, Clapham Yard and Salisbury worksites.

2.3. Complaints Management

A total of fifteen (15) complaints related to Project Works were received during the month.

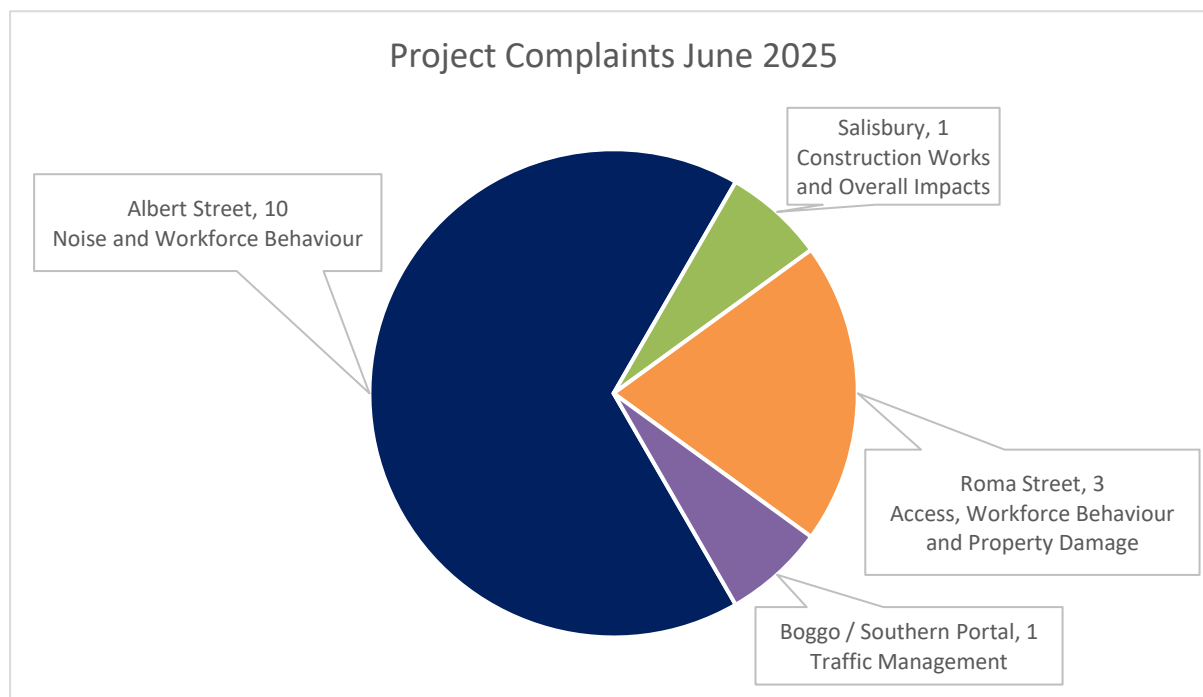
RIS works received one (1) complaint in June 2025, relating to construction works and overall impacts at Salisbury station. For further details and a breakdown of complaints, refer to **Appendix A** (Section 4 and Table 6).

TSD works received fourteen (14) complaints in June 2025. This included:

- Roma Street – three complaints relating to station access, workforce behaviour and property damage (damaged clothing due to wet paint);
- Albert Street – nine complaints received regarding noise and one complaint regarding workforce behaviour. Of the nine complaints received about noise, three were due to work required to install utility services; and
- Boggo Road – one complaint relating to workforce parking.

For further details and a breakdown of complaints, refer to **Appendix B** (Section 5 and Table 10).

The Project Works related complaints summary for the month is provided in the chart below:

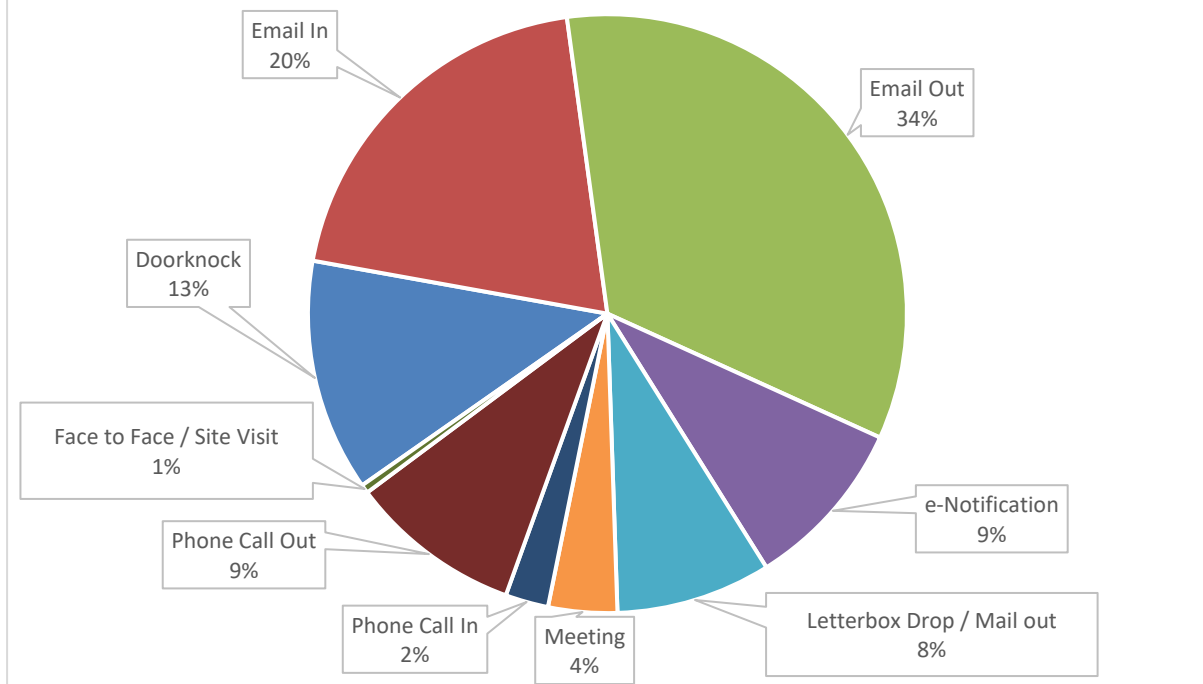


When attended noise monitoring was undertaken in response to a complaint, the contractor confirmed on all occasions that works undertaken at the time of the complaint adhered to project requirements. In all instances this month, previously attended noise monitoring data, representative of the relevant construction activities was used to confirm the works adhered to the project noise requirements.

To close out a complaint, the monitoring data is reviewed (where applicable) against compliance with the CEMP, site environmental management plans and permits, and checks that required community notification has taken place. Contractors have also confirmed that planned mitigation to reduce the impact was implemented. These controls were reviewed collectively together to verify if project requirements have been met.

For scheduled out-of-hours works, community notification was provided, as well as regular project updates. Stakeholder engagement undertaken on the project during the month is in the chart below.

Stakeholder Engagement June 2025



2.4. New Upcoming Project Works

The key new planned Project Works for the coming months include:

Area	New planned works in the coming months
Mayne Area	Mayne Yard North – <ul style="list-style-type: none"> Nil. Mayne Yard East / West – <ul style="list-style-type: none"> Ongoing earthworks, Combined Services Route (CSR), drainage, capping, fencing, and Rail Systems works in Mayne East entry roads; Low Voltage (LV) and comms cabling continues; and Fibre terminations and testing to continue.
Northern Area	RNA / Exhibition – <ul style="list-style-type: none"> Museum link area finishing works; RNA Show Ring 2 improvement works; and Completion of demobilisation of Ekka compound. Northern Corridor – <ul style="list-style-type: none"> Continue prep works for upcoming SCAS in September 2025; Continue corridor drainage and rail furniture installation; Fibre terminations and testing to continue; and Normanby DRS – final integration with QR once Sequence completes their testing and handback to Unity.
Central Area	Roma Street – <ul style="list-style-type: none"> Pocket Park works; Continue services installation and fit-out in mezzanine; Continue canopy works; Ongoing installation of Tunnel Ventilation System (TVS) exhaust fans and attenuators; and Commence Platform 2 slab reo installation.

Area	New planned works in the coming months
	<p>Albert Street –</p> <ul style="list-style-type: none"> • Lot 1 – Complete Jump Form cycle 24 concrete pours, continue blockworks, continue walls and columns FRP; • Lot 2 – Continue M&E installation, continue demolition of the acoustic shed, Glass Fiber Reinforced Concrete (GFRC) installation and permanent electrical service install. • Lot 3 – Continue station fit-out, canopy painting, services installation and escalator installation; and • Green Spine – removing existing street furniture, underground services works, demolishing works, pavement works and installing lighting and traffic signals. <p>Woolloongabba –</p> <ul style="list-style-type: none"> • Installing glazing, cladding, stairs, lifts and escalators; • Gibbon Street sewer works on hold; • Continue Canopy works; • LV switch rooms ready for T&C; and • Ongoing earthworks, pavement and M&E fit-out works. <p>Boggo Road –</p> <ul style="list-style-type: none"> • Ongoing perimeter / internal wall, stair and slab pours; • Ongoing M&E fit-out works; • Continue canopy works and GFRC external installation; • Continue lift installation and electrical terminations; and • Continue TVS installation. <p>Southern Portal –</p> <ul style="list-style-type: none"> • Decline access closure; • Bridge works continues with canopy and screen installation; and • Caisson pumping station works ongoing.
Southern Area	<p>Southern / Dutton Park –</p> <ul style="list-style-type: none"> • Continue progress on Kent Street design; • Early works at Kent Street (strip retaining wall and backfill); • Final LV works to be completed; and • Continue corridor drainage, civils, completions during available SCAS including limited scope during normal weekdays where possible. <p>Yeerongpilly Station –</p> <ul style="list-style-type: none"> • Indigenous artwork installation to be completed. <p>Moorooka –</p> <ul style="list-style-type: none"> • In-ground services commences; • Design development ongoing; • Procurement of key packages ongoing; and • Traffic Management planning ongoing. <p>Clapham Yard –</p> <ul style="list-style-type: none"> • Complete Stage 2 cutover SCAS; • Finishing of Stage 2 fencing; • SVR drainage, earthworks, CSR, hydraulics and Crew Maintenance Facility works continues; • Continue with procurement and early award for phase 3 works; and • Bridge demolition of the old Moolabin Creek rail bridge. <p>Rocklea Station –</p> <ul style="list-style-type: none"> • Sewer Pump Control Panel change over from temporary to permanent by late August; and • Indigenous artwork installation to be completed. <p>Salisbury –</p> <ul style="list-style-type: none"> • Complete platform canopy works; • Continue Platform 1 and 2 service installation and building fit-out and commence

Area	New planned works in the coming months
	canopy rough-in and supercopes; <ul style="list-style-type: none"> Continue Platform 3 FRP; Continue lift shaft fit-out; Continue Lilian Ave entry works and Dollis St roadworks..

2.5. Non-Compliance Events

No NCEs were recorded June 2025. A summary of NCEs to date is shown in the table below.

Status	Date of Event	Category	Area as on the Report	Relevant Condition	Gate 1	Gate 2	Gate 3	Gate 4
Open								
Closed								
CRRDA-001-RIS-001	9/11/19	Noise	Yeronga Station	4, 10, 11	10/11/19	14/11/19	26/11/19	18/12/19
CRRDA-002-TSD-001	27/03/20	ESC	Woolloongabba	4, 15, 18	30/03/20	31/03/20	22/04/20	11/06/20
CRRDA-003-TSD-002	27/03/20	ESC	Boggo Rd	4, 15, 18	30/03/20	31/03/20	22/04/20	11/06/20
CRRDA-004-TSD-003	28/03/20	Traffic	Boggo Rd	4, 10, 14	30/03/20	31/03/20	22/04/20	11/06/20
CRRDA-005-TSD-004	27/03/20	Reporting	Multiple sites	4, 6, 11, 13	30/03/20	31/03/20	22/04/20	11/06/20
CRRDA-006-TSD-005	27/03/20	Air Quality	Multiple sites	13	30/03/20	31/03/20	22/04/20	11/06/20
CRRDA-009-RIS-003	6/05/22	ESC	Clapham Yard	4	28/10/22	28/10/22	12/12/22	12/12/22
CRRDA-010-RIS-004	10/05/22	Acid Sulphate Soils Management	Clapham Yard	4, 19	28/10/22	28/10/22	12/12/22	12/12/22
CRRDA-11-RIS-005	23/11/22	Out Of Hours Works	Fairfield Station	4,10	14/07/23	14/07/23	14/07/23	12/09/23
CRRDA-12-RIS-006	19/04/24	Construction Traffic Management	Salisbury	4,7,14	04/07/24	04/07/24	04/07/24	11/09/24
Withdrawn								
CRRDA-007-RIS-002	1/04/20	Air Quality	Multiple sites	13	28/04/20	30/04/20	Withdrawn	
CRRDA-008-TSD-006	8/04/20	Working Hours	Roma Street	4,10	28/04/20	30/04/20	Withdrawn	

Gate 1 - EM notification to contractor. NCE confirmed

Gate 2 - 48 hour NCE notification submitted to CG

Gate 3 - 14 day report submitted

Gate 4 - 14 day report uploaded to CRR website

Appendix A RIS Monthly Report

COORDINATOR-GENERAL'S MONTHLY REPORT: June 2025

Prepared in accordance with Coordinator-General Imposed Condition 6 - Reporting.

Project number:	Q01080
Document number:	RIS-UNA-ENV-MRP-06610-046
Revision date:	24/07/2025
Revision number:	01

1 Monthly Monitoring Summary

It is UNITY's intent to aim for the Goals and Objectives relevant to vibration, noise, air quality and water monitoring within the practical extent of delivering the Project.

Vibration monitoring was conducted on two (2) occasions during June 2025. Noise monitoring was undertaken on nine (9) occasions in June 2025. Each monitoring event that was undertaken confirmed works adhered to Project requirements.

Ambient air quality monitoring was conducted at the RNA worksite, Mayne and Clapham Yards during June 2025. Air quality monitoring confirmed works adhered to Project requirements.

Water quality monitoring was conducted on one (1) occasion during the reporting period. Water quality monitoring was conducted in line with post-rainfall monitoring requirements. Monitoring confirmed no impacts were generated by the Project.

2 Environmental Monitoring Results

Monitoring data is provided below in accordance with Imposed Condition 6(b)(i).

2.1 Noise Monitoring

Noise requirements (levels) are defined as goals within Imposed Condition 11. The goals are to be aimed for.

The Coordinator-General's Change Report acknowledges instances where these goals may not be achieved. Noise monitoring was conducted on nine (9) occasions during June 2025. All noise monitoring adhered to project requirements and monitoring results are detailed in the table below.

Table 1: Noise Monitoring Data

No.	Date/Time	Location (Street Name) (Construction area)	Purpose of Monitoring	Internal or External ^[3] Monitoring	Activity	Dominant Noise Source	Noise Goal LA10 ^[1]	Noise level LA10	Noise Goal LAeq ^[2]	Noise level LAeq	Adhered to Project Requirements (Yes / No)
1.	04/06/2025 18:02	Moolabin Crescent (Clapham Yard)	Construction Monitoring at Sensitive Places	External	Excavation Works	Non-Project Related Traffic Noise	60	46.5	50	44.7	Yes
2.	07/06/2025 13:25	Olivia Avenue (Salisbury)	Construction Monitoring at Sensitive Places	External	Excavation Works	Construction Noise	60	64	50	63.2	Yes
3.	07/06/2025 14:06	Brooke Street (Rocklea)	Construction Monitoring at Sensitive Places	External	Rail Overhead Lines Works	Non-Project Related Traffic Noise	60	59.4	50	56.7	Yes
4.	11/06/2025 14:25	Mayne Road (Mayne Yard)	Construction Monitoring at Sensitive Places	External	Signaling and Track Works	Non-Project Related Background Noise	65	65.5	55	61.2	Yes
5.	12/06/2025 14:04	Tuften Street (Mayne Yard)	Construction Monitoring at Sensitive Places	External	Rail Overhead Lines Works	Non-Project Related Background Noise	65	54.4	55	53.5	Yes
6.	19/06/2025 08:49	Ipswich Road (Clapham Yard)	Construction Monitoring at Sensitive Places	External	Rail Track Works	Non-Project Related Background Noise	65	66.3	55	65.7	Yes
7.	19/06/2025 12:34	Lillian Avenue (Salisbury)	Construction Monitoring at Sensitive Places	External	Excavation and Station Works	Construction Noise	60	70.2	50	68.6	Yes
8.	20/06/2025 05:14	Ipswich Road (Clapham Yard)	Construction Monitoring at Sensitive Places	External	Rail Track Works	Construction Noise	52	68.9	45	68	Yes
9.	21/06/2025 14:00	McDonald Road (Mayne Yard)	Construction Monitoring at Sensitive Places	External	Rail Overhead Lines Works	Non-Project Related Background Noise	60	52.7	50	50.4	Yes

2.2 Vibration Monitoring

Vibration requirements (levels) are defined as goals within Imposed Condition 11. The goals are to be aimed for. The Coordinator-General's Change Report acknowledges instances where these goals may not be achieved. Vibration monitoring was conducted on two (2) occasions during June 2025. All vibration monitoring results adhered to Project requirements and are detailed in the table below.

Table 2: Vibration Monitoring Data

No.	Start Date	Finish Date	Location	Max Vibration Level (mm/s)	Vibration Goal (mm/s)	Adhered to Project Requirements (Yes / No)
1.	01/06/2025	30/06/2025	John MacDonald Stand, RNA	0.0820	3 mm/s	Yes
2.	16/06/2025	23/06/2025	Wesley Mission Kitchen, Clapham Yard	3.350	10mm/s	Yes

2.3 Air Quality

Air quality requirements (levels) are defined as goals within Imposed Condition 13. The goals are to be aimed for. The Coordinator-General's Change Report acknowledges instances that exist when these goals may not be achieved.

Visual monitoring was undertaken during routine environmental inspections. A total of 28 inspections were undertaken by the Environment Team throughout the reporting period across Mayne Yard, RNA Showgrounds, Northern Corridor, Southern Area, Clapham Yard, Dutton Park and Salisbury stations.

UNITY undertakes air quality monitoring using dust deposition gauges (DDGs), Total Suspended Particles (TSP) and particulate matter less than 10µm (PM10). TSP and PM10 are monitored using portable air quality units.

Air quality monitoring results are provided below.

2.3.1 Deposited Dust Results

Passive dust deposition gauge (DDG) samples are analysed monthly.

The dust deposition gauge results (and total rainfall) for the reporting period are detailed below. All monitoring data adhered to Project requirements.

Table 3: Air Quality Monitoring - Deposited Dust Data

CGCR Goal (mg/m ² /day)	AQ-01 - RNA Showground (mg/m ² /day)	AQ-04 Grafton Street (Mayne Yard) (mg/m ² /day)	AQ-06 - Clapham Yard (mg/m ² /day)	AQ-09 Yeerongpilly Station (mg/m ² /day)	AQ-10 Northern Portal (mg/m ² /day)	AQ-11 Dutton Park (mg/m ² /day)	AQ-12 Salisbury, Lillian Avenue (mg/m ² /day)	AQ-13 Salisbury, Fairlie Terrace (mg/m ² /day)
120	20	17	17	7	33	13	[1]	10
Total Rainfall (mm)	25.1	19.3	33.8	33.8	25.1	13.2	30.8	30.8

[1] The DDG was found tampered with and replaced with a new vessel and funnel.

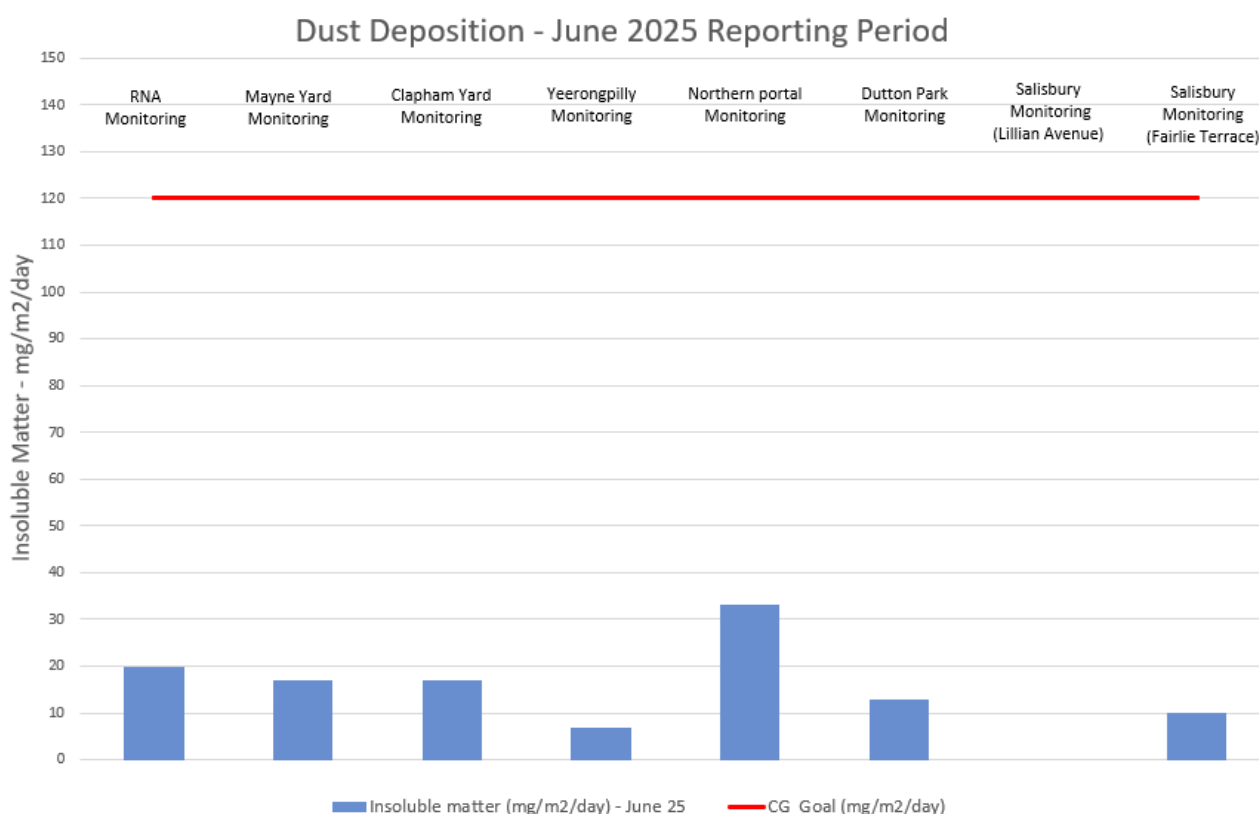


Figure 1: Air Quality Monitoring - Deposited Dust Data

2.3.2 Ambient Air Quality Results

TSP and PM10 monitoring were conducted during June 2025. Targeted monitoring of potential dust-generating activities is conducted by the mobile air quality units and was completed at the RNA, Mayne Yard and Clapham Yard worksites during June 2025. No exceedances were recorded during this reporting period.

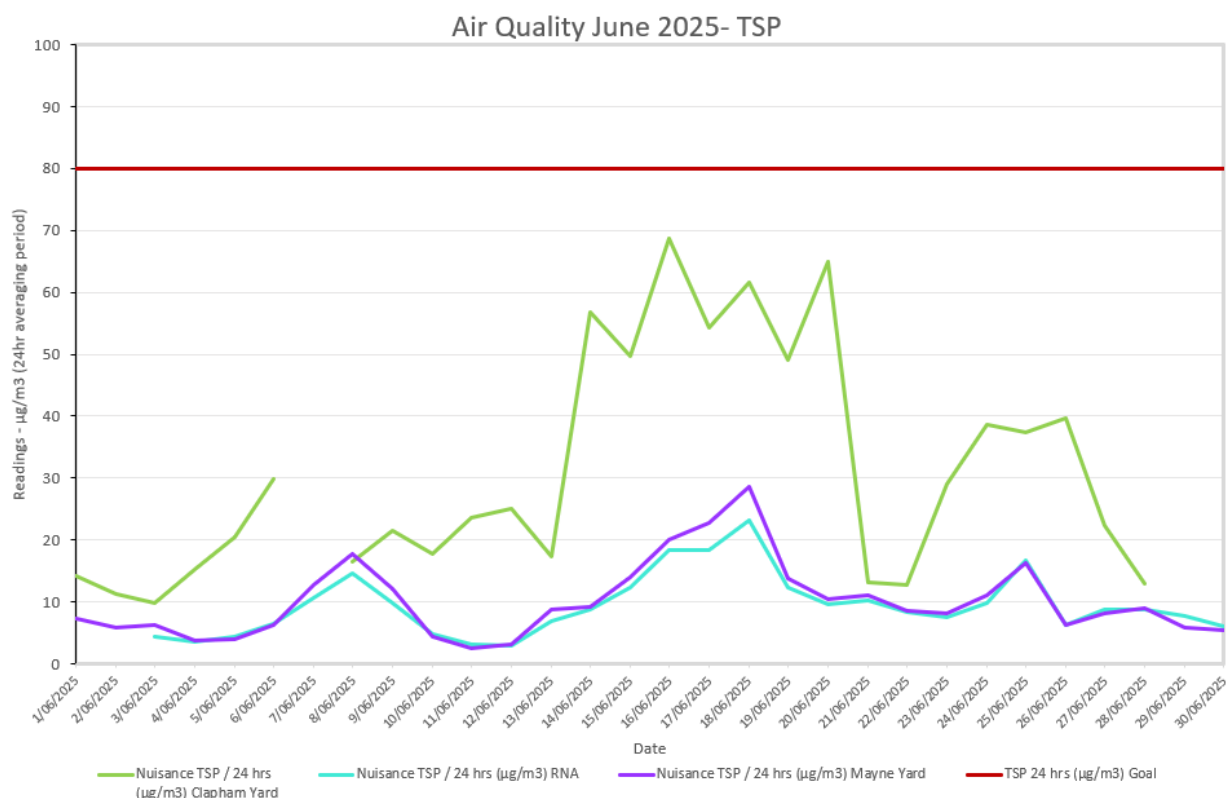


Figure 2: Air Quality Monitoring – Total Suspended Particles Data

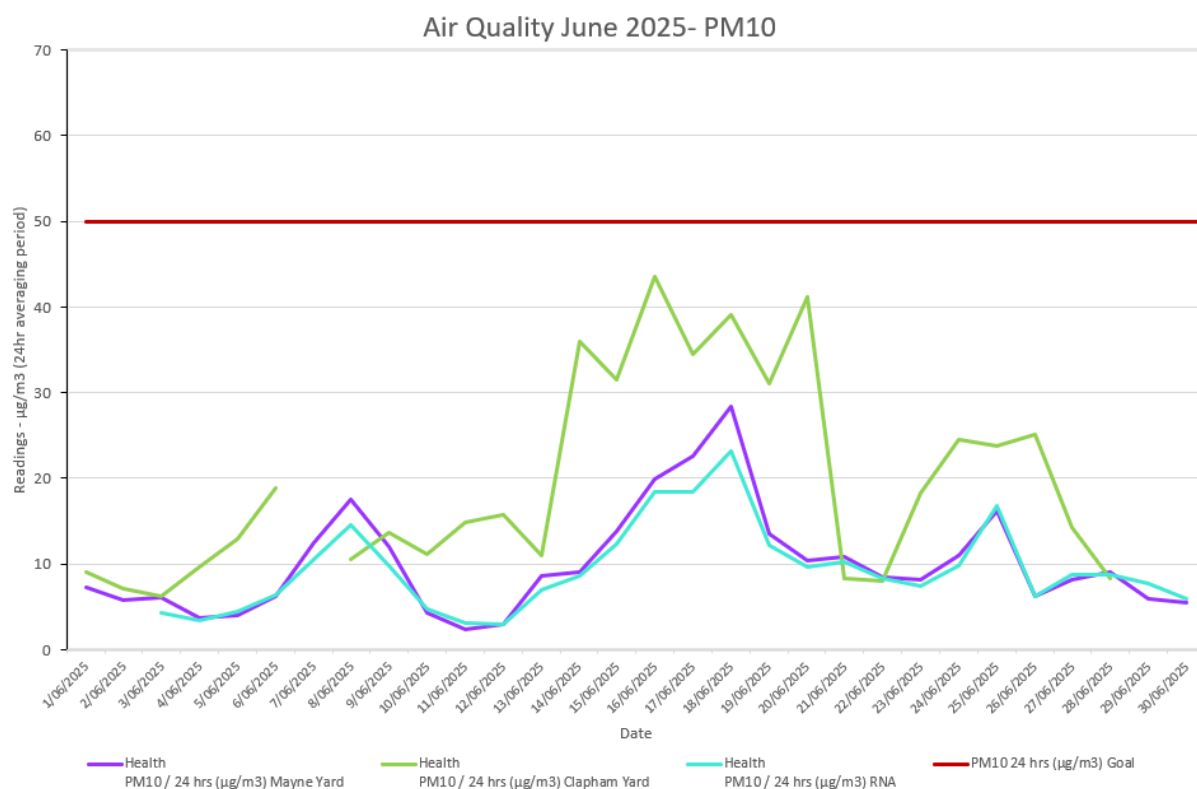


Figure 3: Air Quality Monitoring - PM10 Data

2.3.3 Interpretation

RNA

The RNA mobile air quality unit experienced technical issues from the 31st of May to the 2nd of June 2025. Troubleshooting was conducted as per the manufacturer's recommendations with the issue resolved. No further outages were recorded.

Further notes:

- Site inspections confirmed dust mitigation measures were in place and construction works were appropriately managed.
- No exceedances were shown by the dust deposition gauge results for the worksite.
- No exceedances were recorded by the air quality monitoring station throughout the remainder of the reporting period or by the nearby Mayne Yard air quality monitoring station.
- No complaints were received by the Project related to dust nuisance at the RNA worksite.
- Construction works at the Exhibition Station were completed with workforce demobilising on the 27th of June 2025.

Clapham Yard

The Clapham Yard mobile air quality unit experienced technical issues on the 7th and from the 29th of June 2025. Troubleshooting was conducted as soon as practical and, following the manufacturer's recommendations, the issue was resolved.

Further notes:

- Site inspections confirmed dust mitigation measures were in place and construction works were appropriately managed.
- No exceedances were shown by the dust deposition gauge results for the worksite.
- No exceedances were recorded by the air quality monitoring station throughout the remainder of the reporting period.
- No complaints were received by the Project related to dust nuisance at the Clapham Yard worksite.

2.4 Water Quality

Imposed Condition 15(b) requires that during construction, monitoring, and reporting on water quality in accordance with the Water Quality Management Plan, a sub-plan of the C-EMP, occurs.

Imposed Condition 15(a) requires that discharges of groundwater from Project Works within the Breakfast Creek catchment must comply with the Brisbane River Estuary environmental values and water quality objectives (Basin no.143 – mid-estuary) in the *Environment Protection (Water) Policy 2009*.

Imposed Condition 15(a) requires that discharges of groundwater from Project Works within Moolabin Creek, Yeerongpilly – Oxley Creek catchment must comply with the Oxley Creek - Lowland freshwater environmental values and water quality objectives (Basin no.143 (part) – including all tributaries of the Creek) in the *Environment Protection (Water) Policy 2009*.

Water quality monitoring was conducted on one (1) occasion during the reporting period. Water quality monitoring was conducted in line with post-rainfall requirements. Monitoring confirmed no impacts were generated by the Project.

2.4.1 Water Quality – Post Rainfall Monitoring

June 2025 Rainfall Records

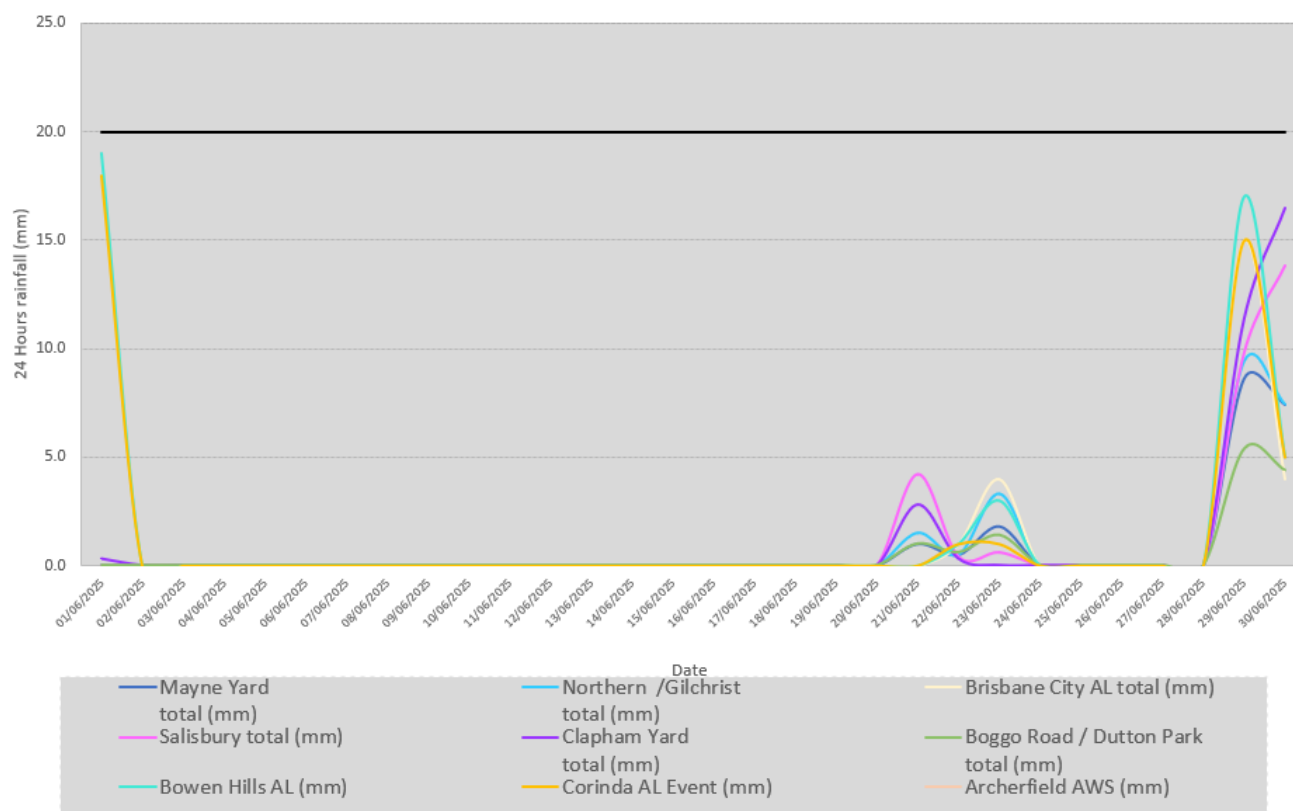


Figure 4: Rainfall Data

Table 4: Post Rainfall Water Quality Monitoring Data

Date	Location	Waterway	Tide	Turbidity (NTU)	TSS (mg/L)	DO (%)	pH (pH unit)
01/06/2025	SW-5 (Upstream rail corridor)	Moolabin Creek	Not applicable (non-tidal environment)	19	<5	91.2	7.74
01/06/2025	SW-6 (Downstream of rail corridor)	Moolabin Creek	Not applicable (non-tidal environment)	17.7	<5	94.8	7.78
01/06/2025	SW-9 (Downstream of rail corridor)	Stable Swamp Creek	Not applicable (non-tidal environment)	23.4	<5	102.3	7.73
01/06/2025	SW-9A (Upstream of rail corridor)	Stable Swamp Creek	Not applicable (non-tidal environment)	20.3	6	100.0	7.80

2.4.2 Water Quality – Routine Monitoring (Bi-annual)

Requirements related to routine surface water quality monitoring and reporting have been addressed with bi-annual water sampling completed on the 26/07/2024 and 23/01/2025.

2.4.3 Groundwater Discharge Monitoring Results

Groundwater discharge monitoring was not triggered during the reporting period.

2.4.4 Surface Water Discharge Monitoring

Surface water discharge monitoring was not triggered during the reporting period.

3 Compliance review

3.1 Non-Compliance Events

The below section summarises the events to be reported in accordance with Imposed Condition 5 and Imposed Condition 6(b)(ii). A Non-Compliance event (NCE) is defined as Project works that do not comply with the Imposed Conditions. NIL non-compliances occurred during the reporting period.

Table 5: Summary of Non-Compliance Events

Event Title	Location, Date, and time of event	Date the Event was Formally Notified to CG/IEM	Conditions Affected	Date the Event Report Formally Sent to CG/IEM	Status of Event
NA	-	-	-	-	-

4 Complaints

Reporting of complaints is provided below in accordance with Imposed Condition 6(b)(iii).

During June 2025, one (1) complaint was received related to UNITY Project works, as detailed below.

Table 6: Summary of Complaints

No.	Date	Location	Description of Issue	Response	Status of Event
1	10/06/2025	Salisbury (Olivia Avenue)	Construction Works and Overall Potential Impacts	A stakeholder contacted the Project regarding construction works at the Salisbury precinct. The stakeholder provided feedback about perceived impacts of construction works. UNITY reviewed the circumstances and works undertaken were consistent with the community notification. UNITY also provided the stakeholder with an overview of the works occurring, their duration and measures implemented to mitigate to potential impacts.	Closed

Attachment 1 Monitoring Locations – Noise

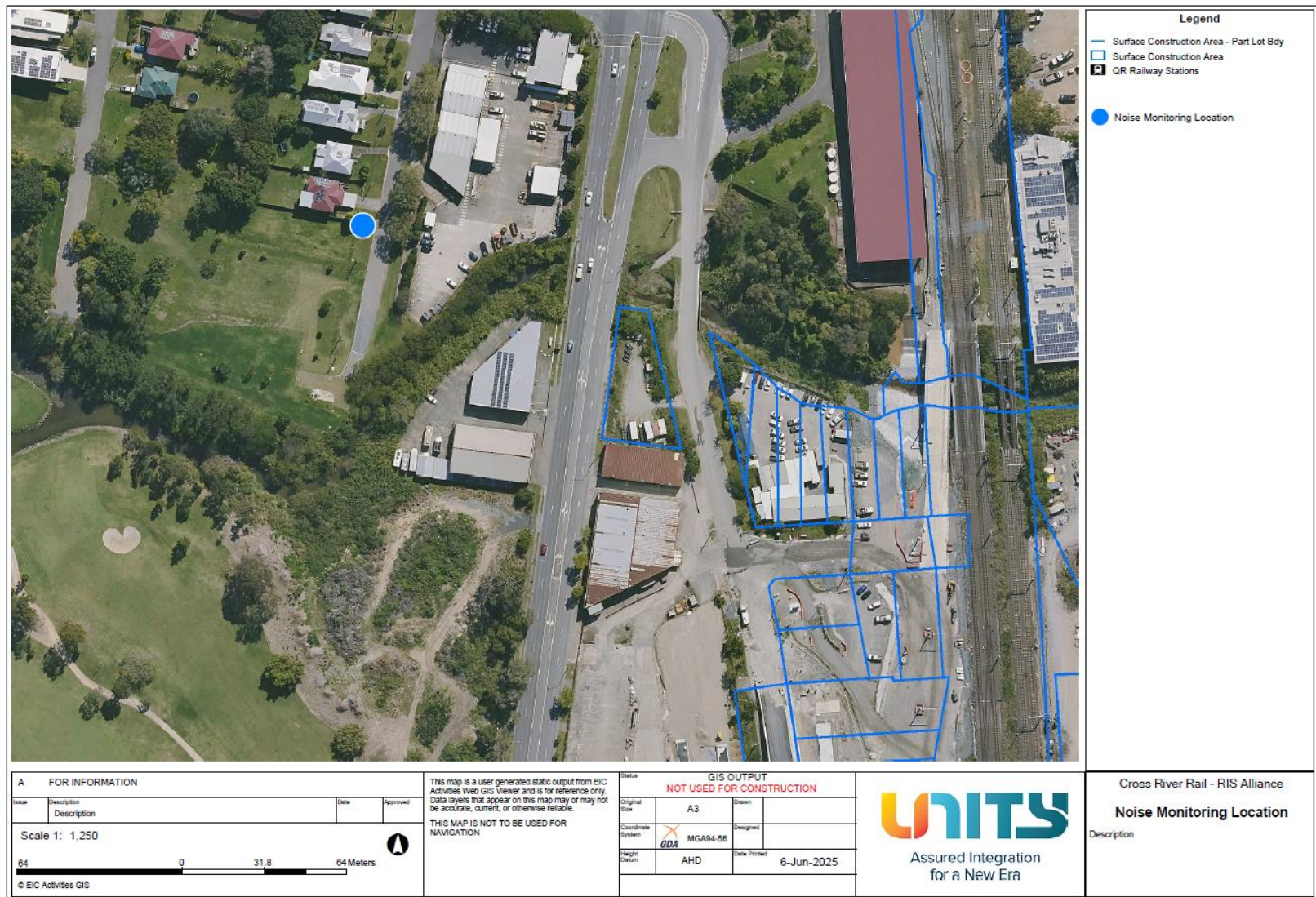


Figure 5: Clapham Yard Noise Monitoring Location

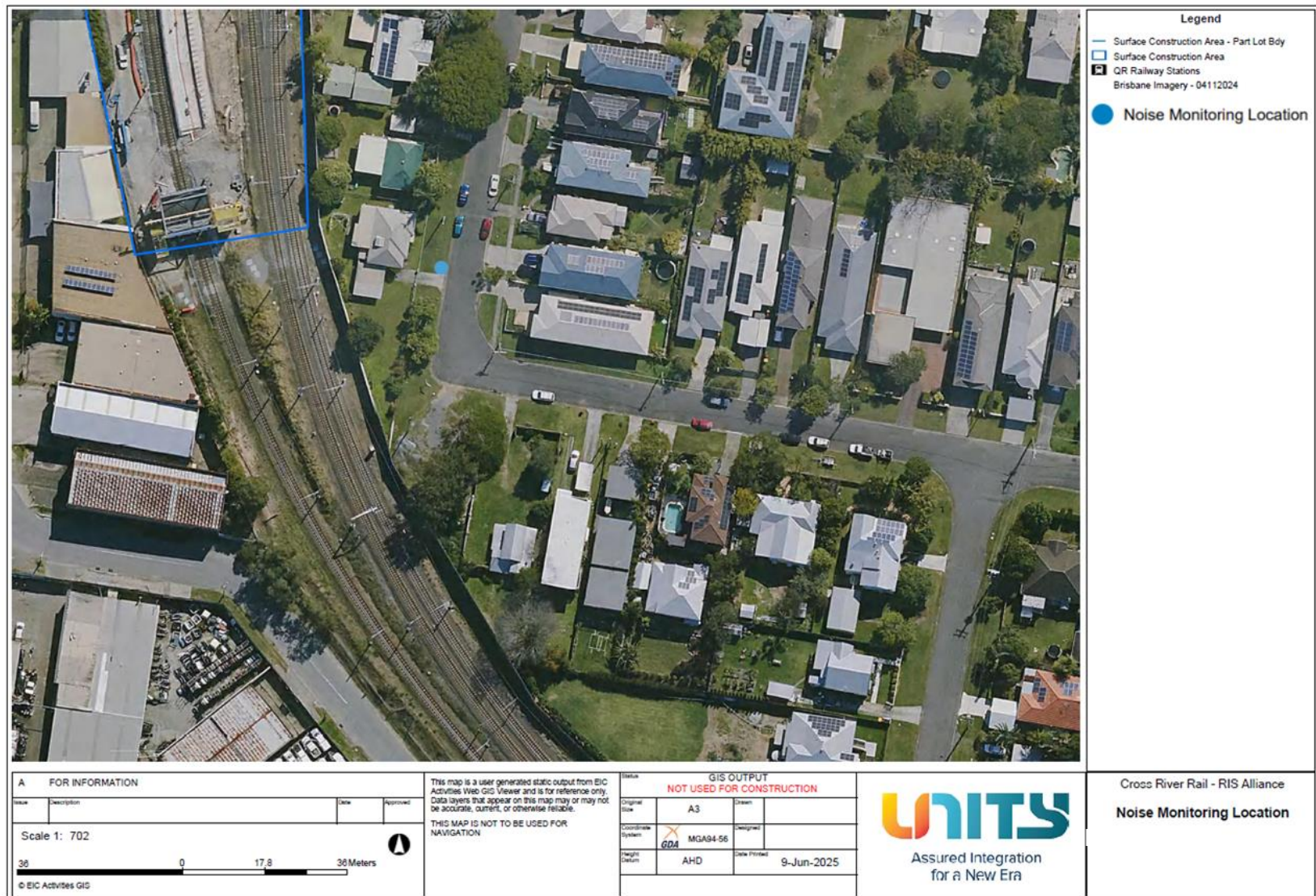


Figure 6: Salisbury Noise Monitoring Location

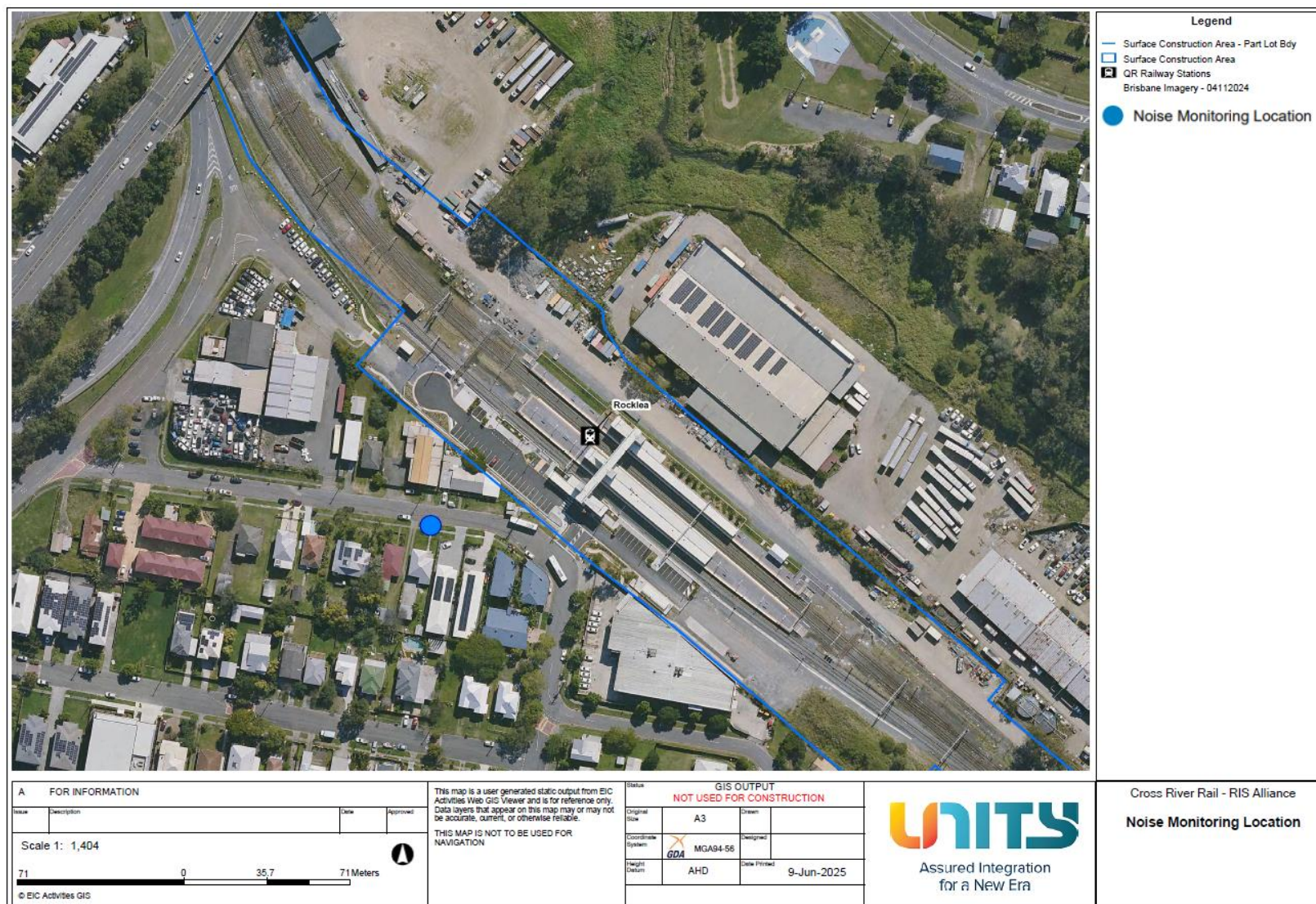


Figure 7: Rocklea Noise Monitoring Location

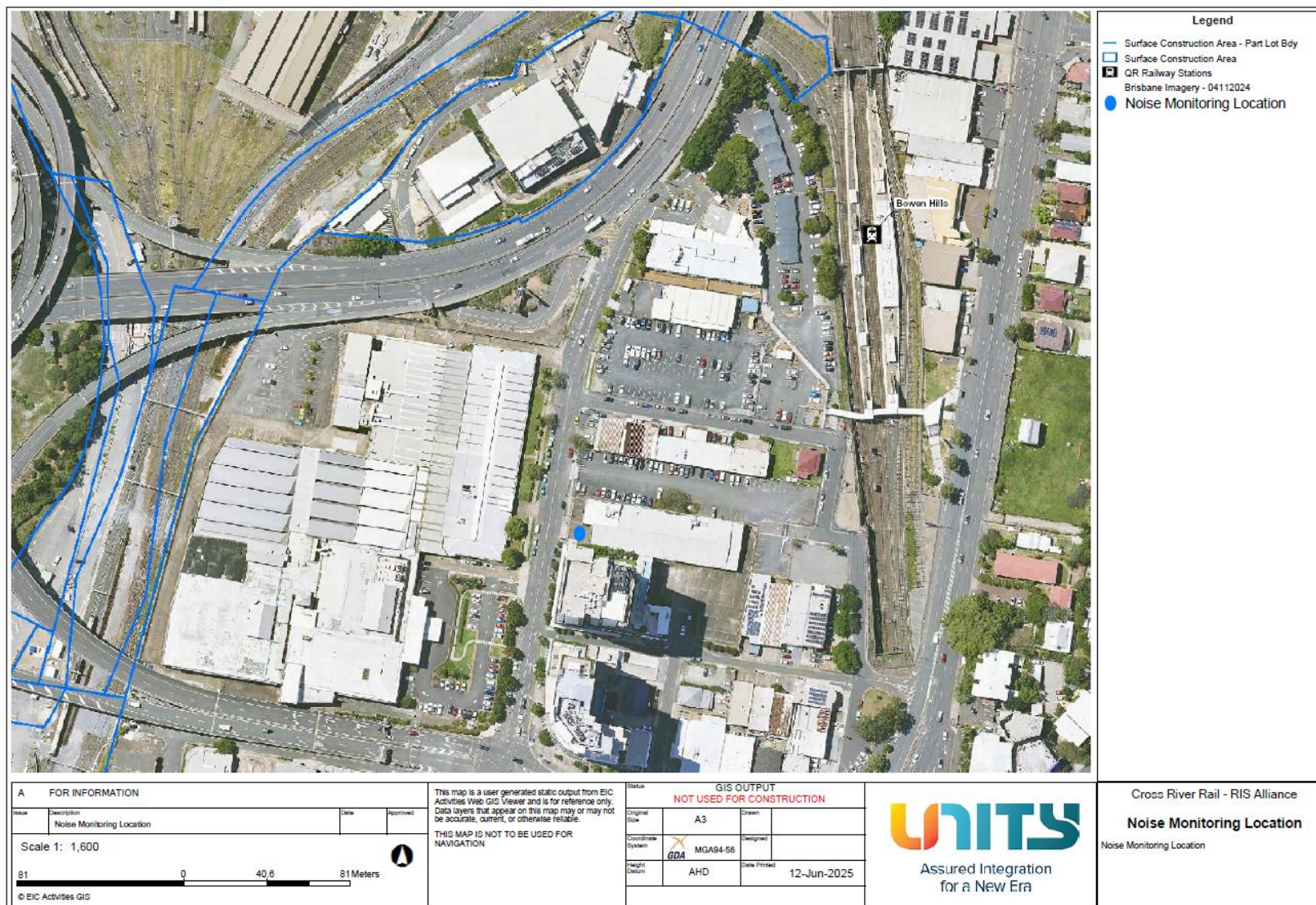


Figure 8: Mayne Yard Noise Monitoring Location

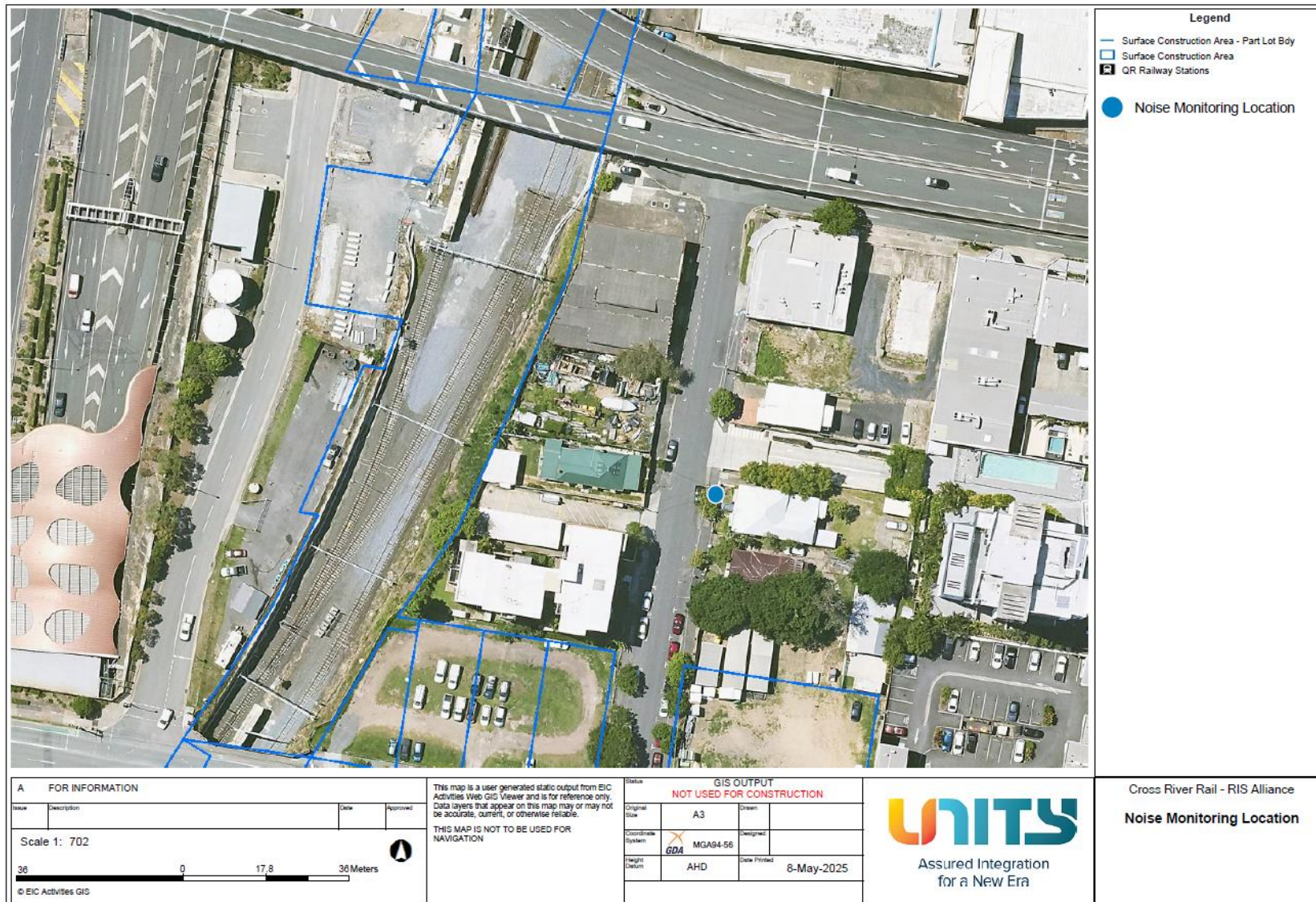


Figure 9: Mayne Yard Noise Monitoring Location

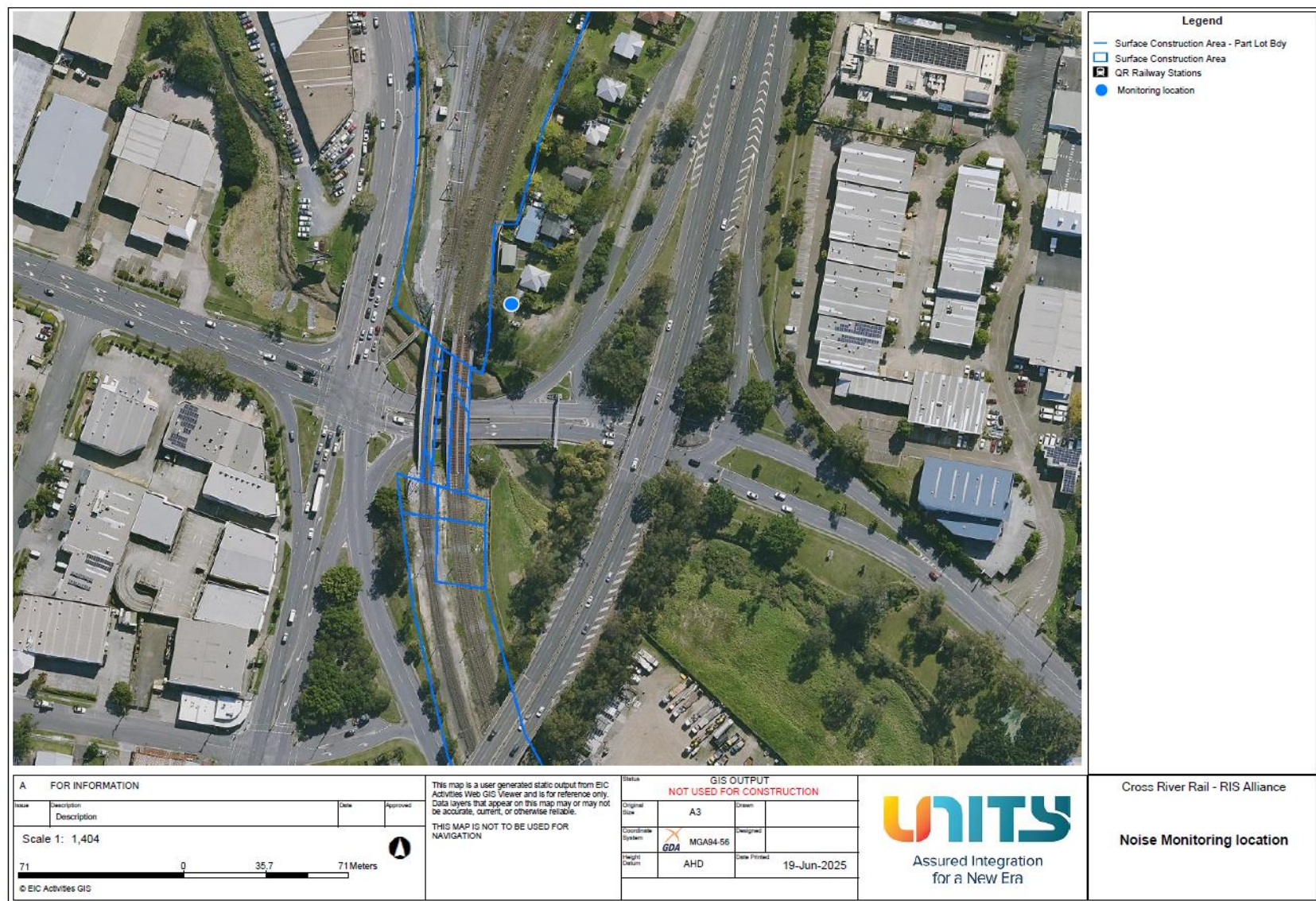


Figure 10: Clapham Yard Noise Monitoring Location

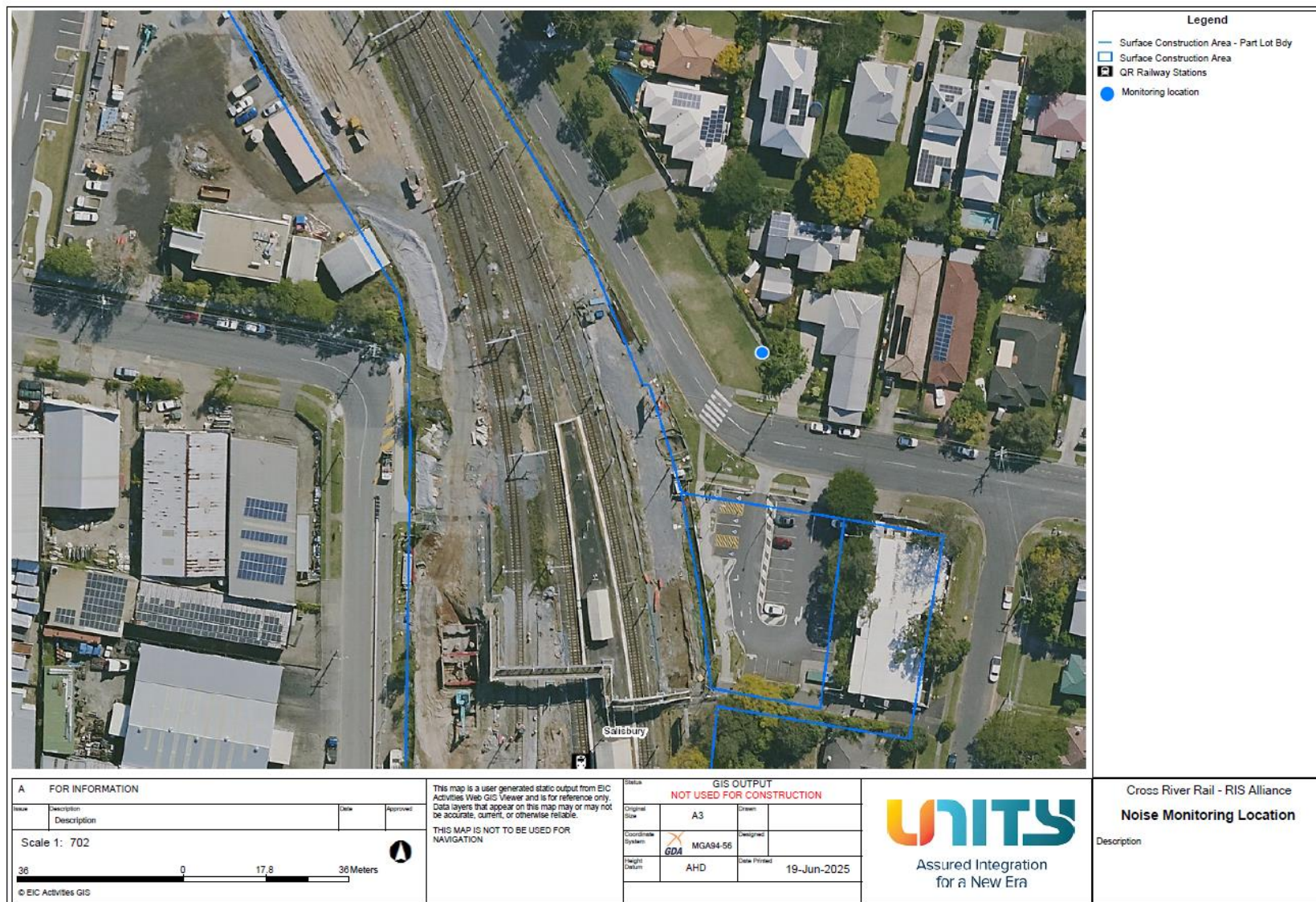


Figure 11: Salisbury Noise Monitoring Location

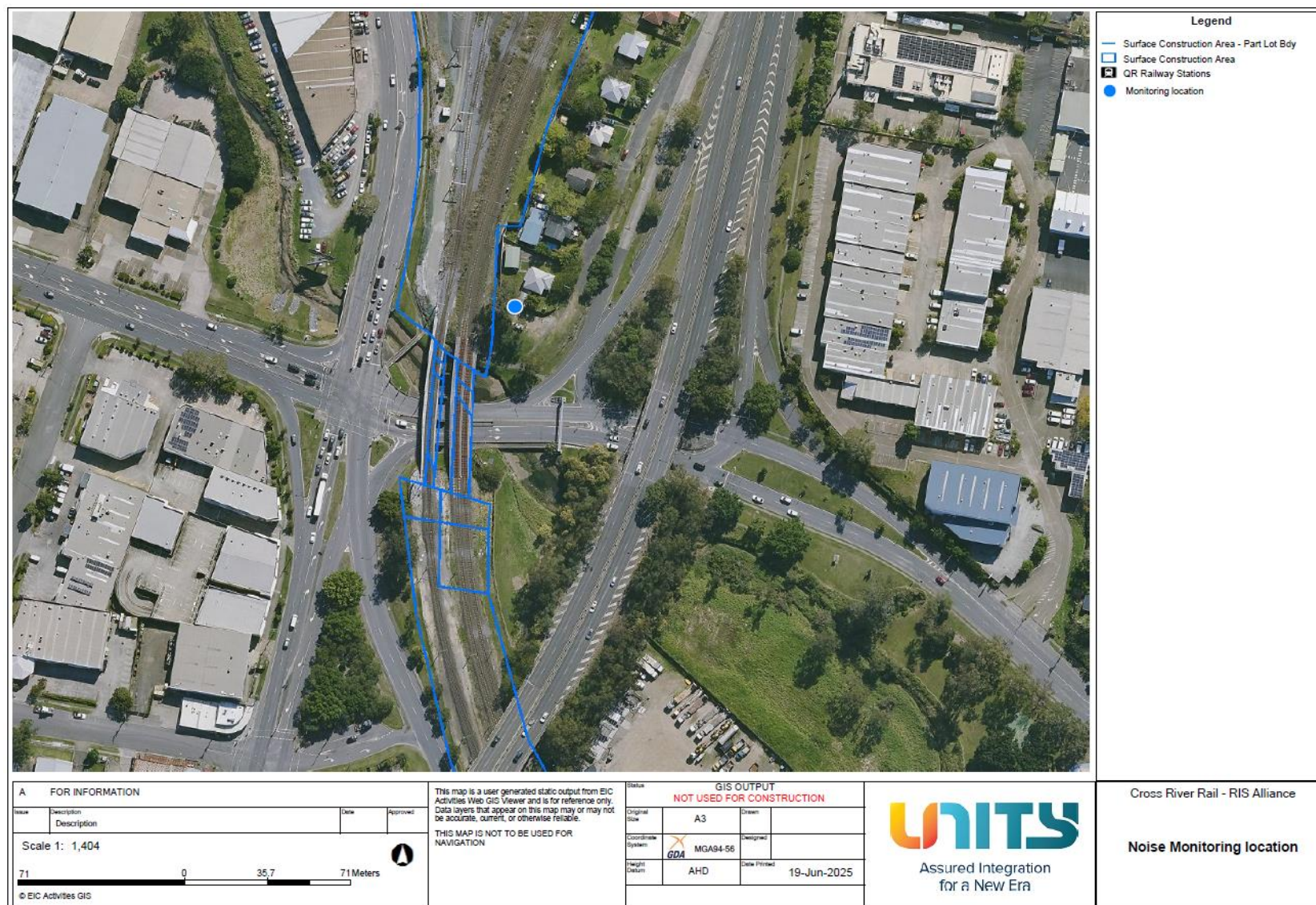


Figure 12: Clapham Yard Noise Monitoring Location

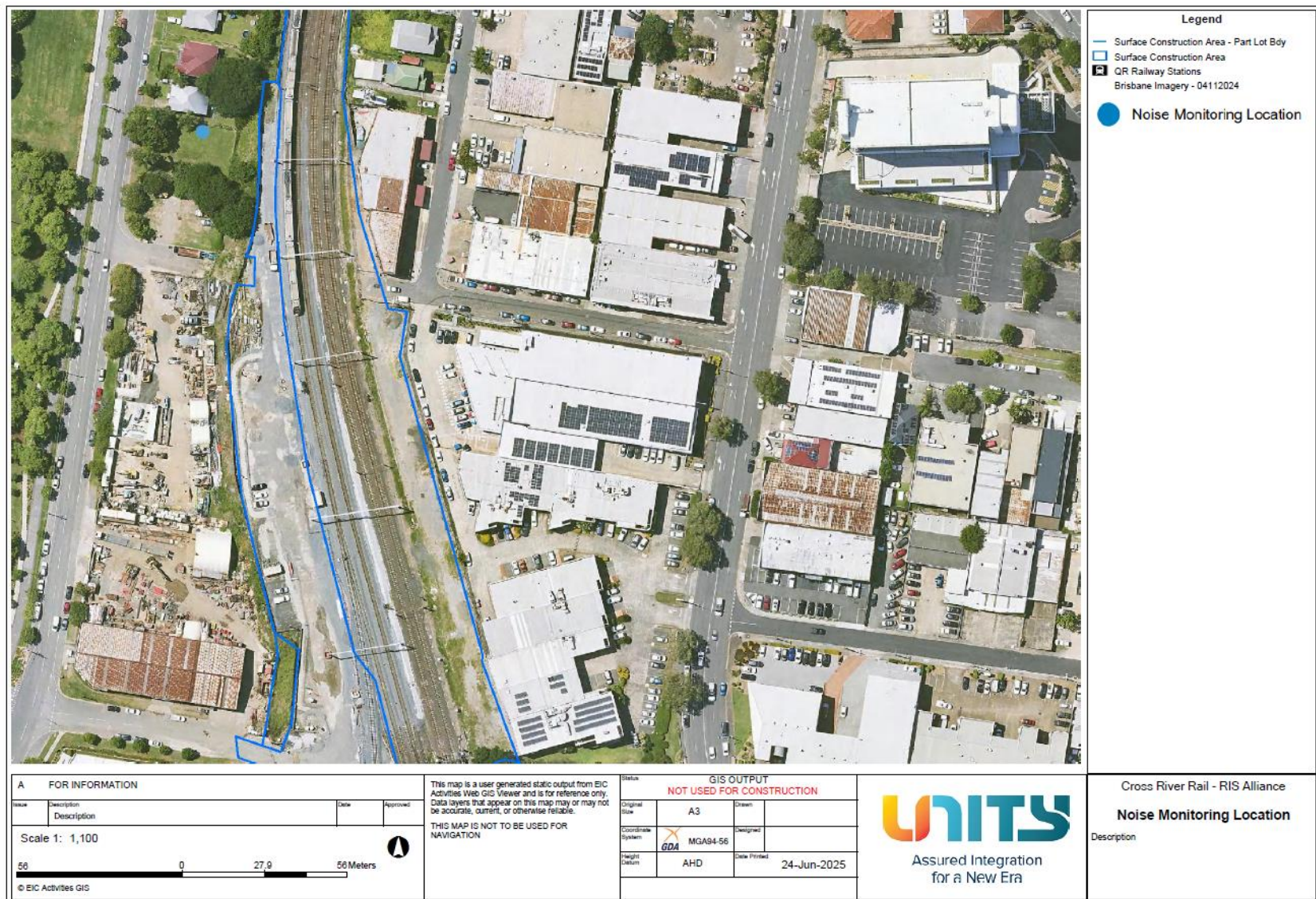


Figure 13: Mayne Yard Noise Monitoring Location

Attachment 2 Monitoring Locations - Vibration

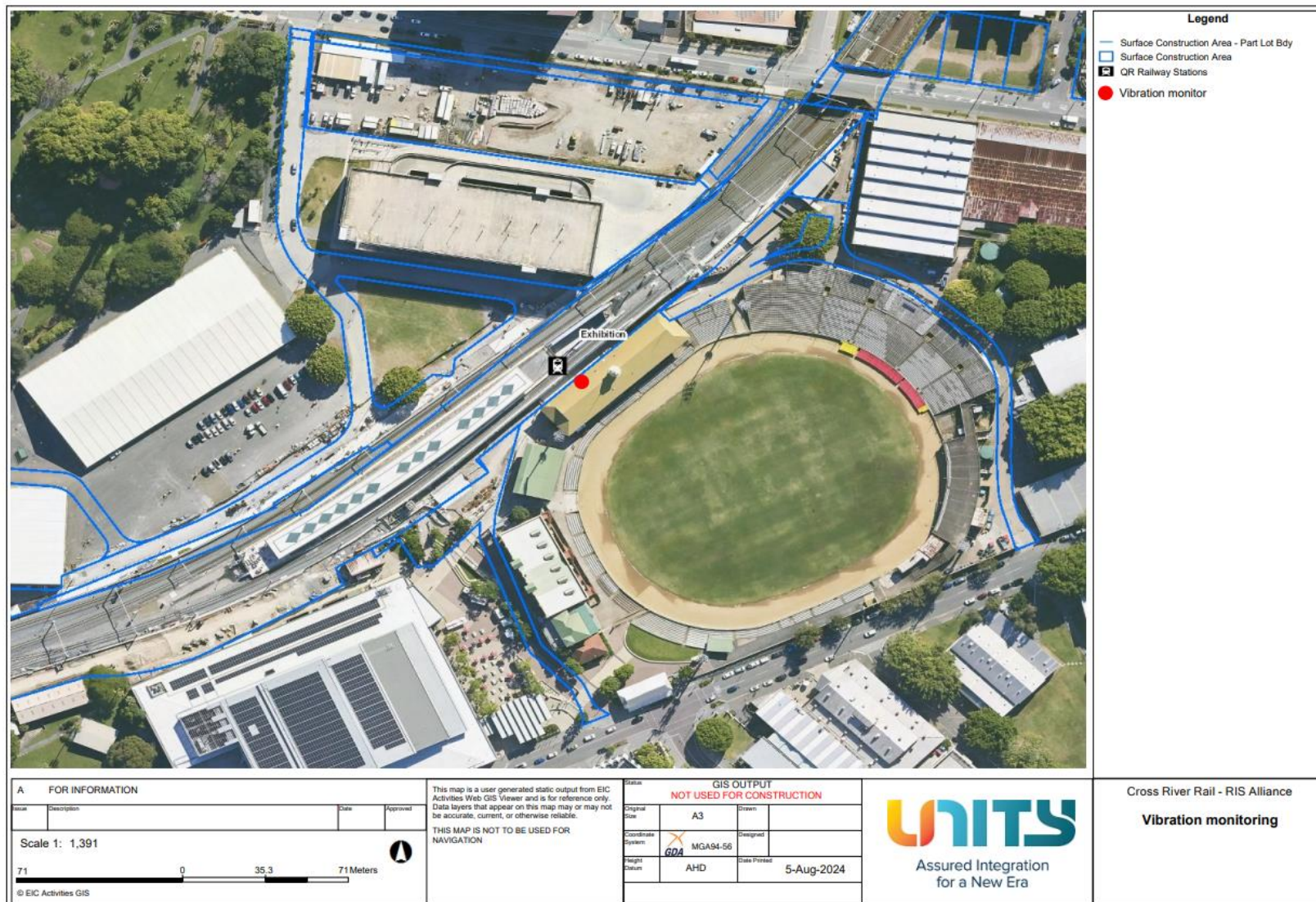


Figure 14: RNA Vibration Monitoring Location

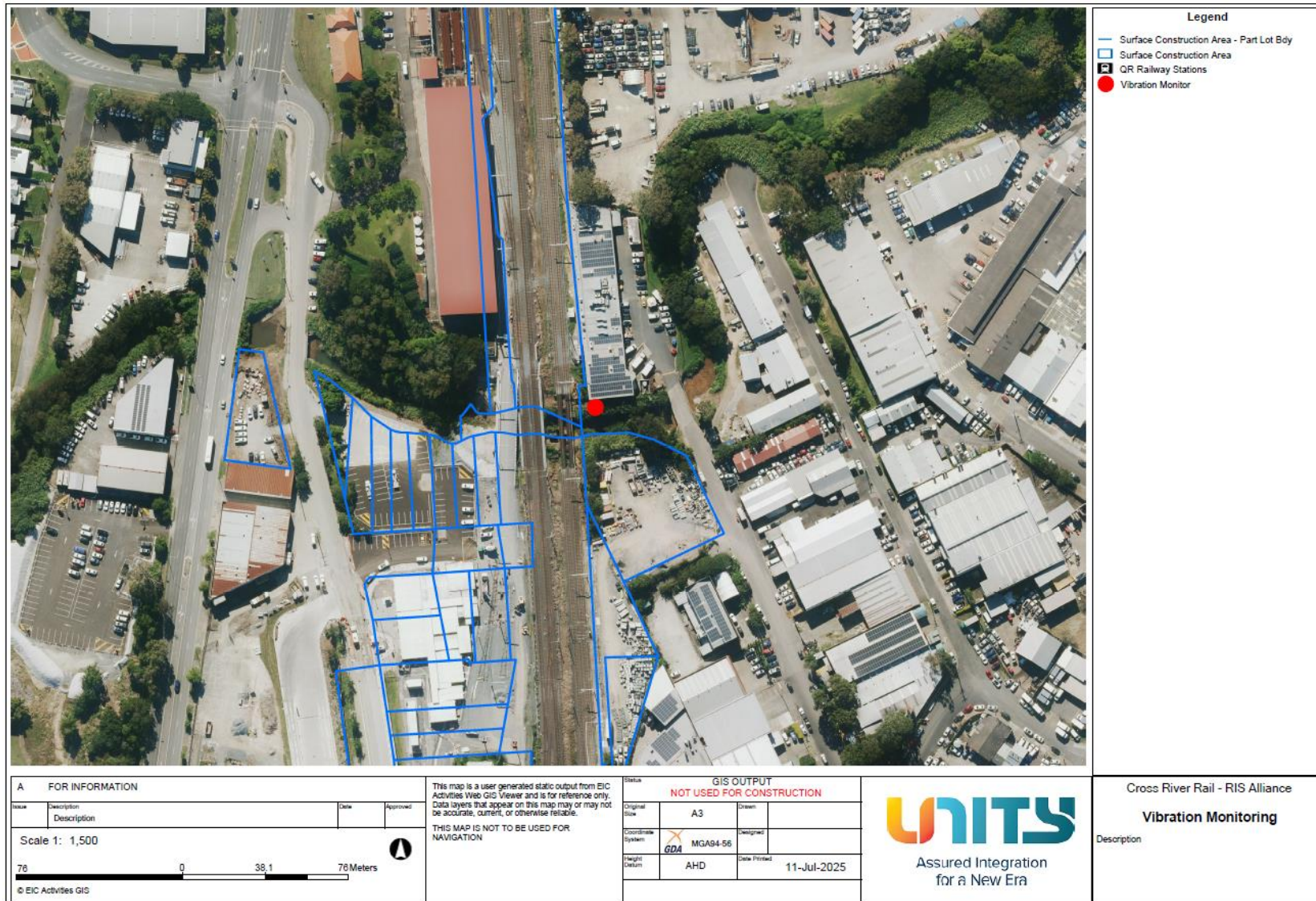


Figure 15: Clapham Yard Vibration Monitoring Location

Attachment 3 Monitoring Locations - Air Quality

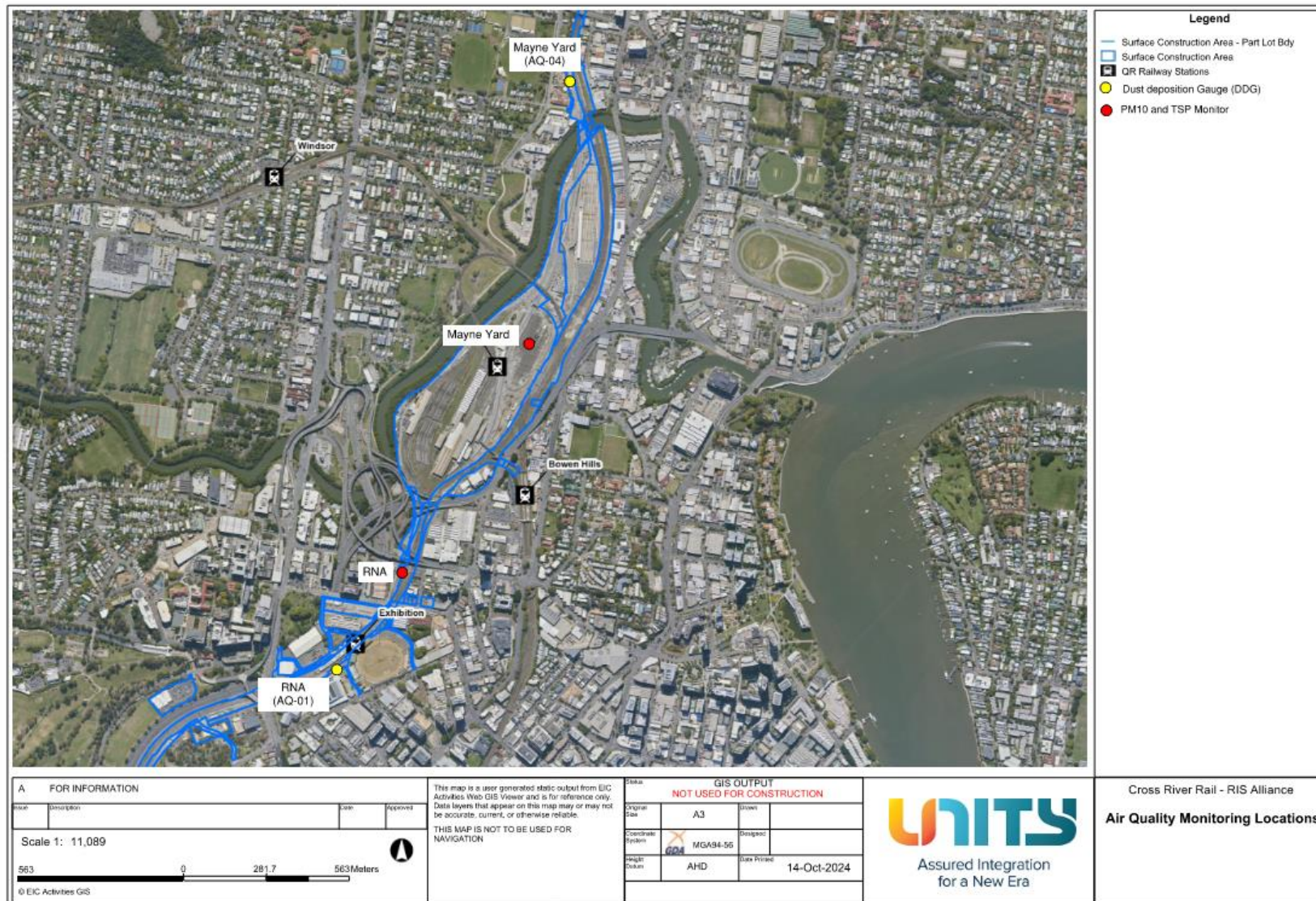


Figure 16: Mayne Yard and RNA AQ locations

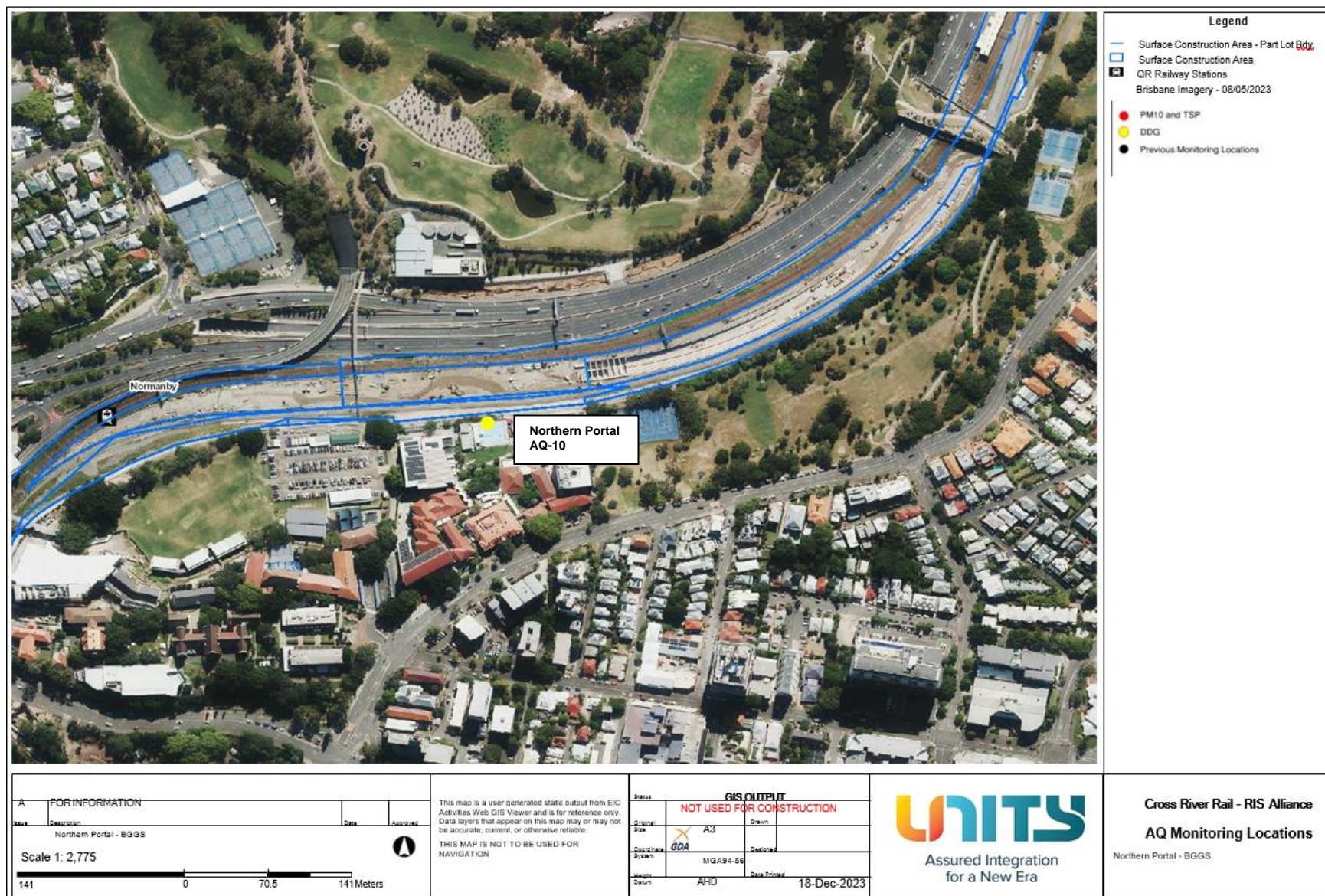


Figure 17: Northern Portal AQ locations

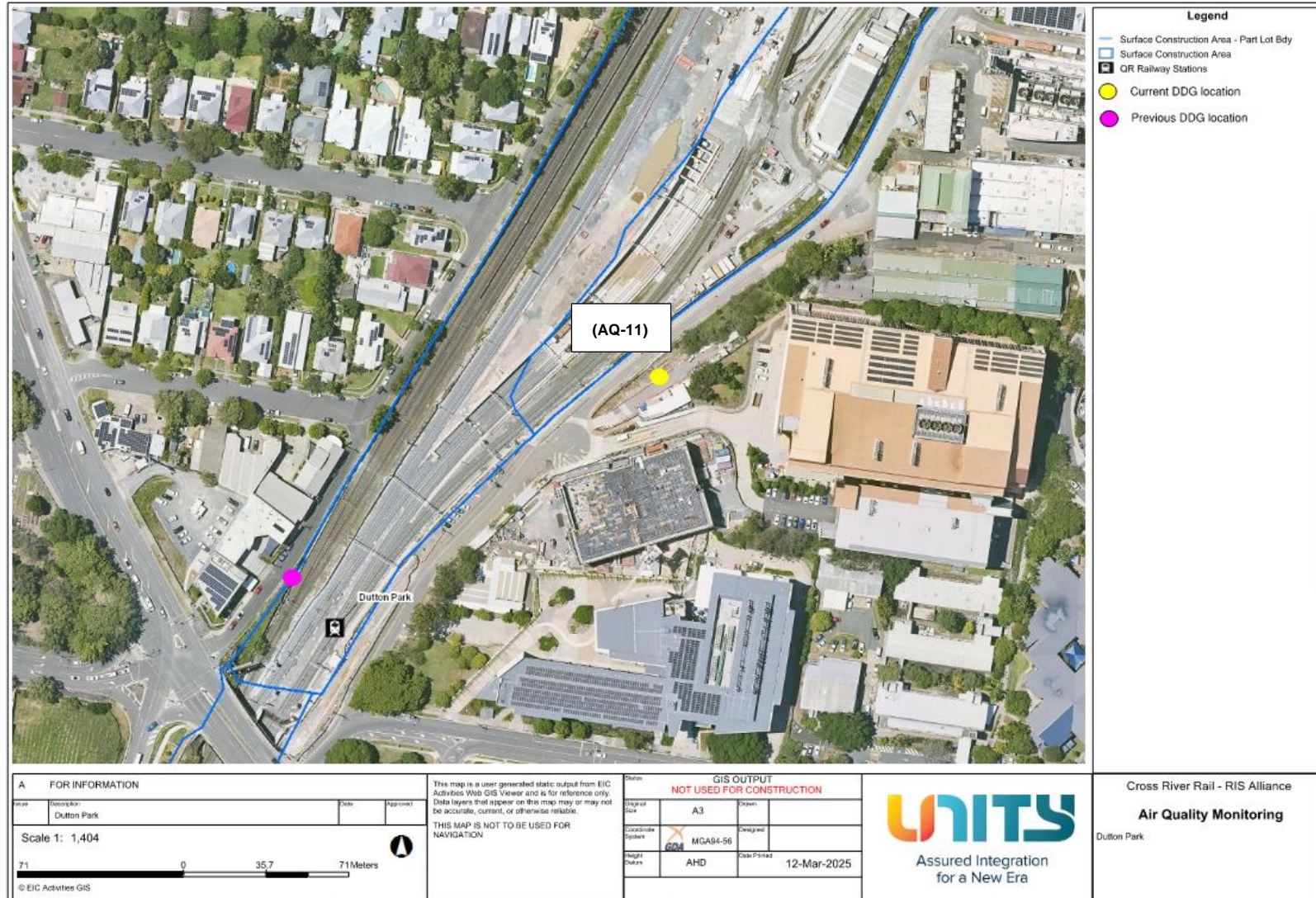


Figure 18: Southern Area AQ locations

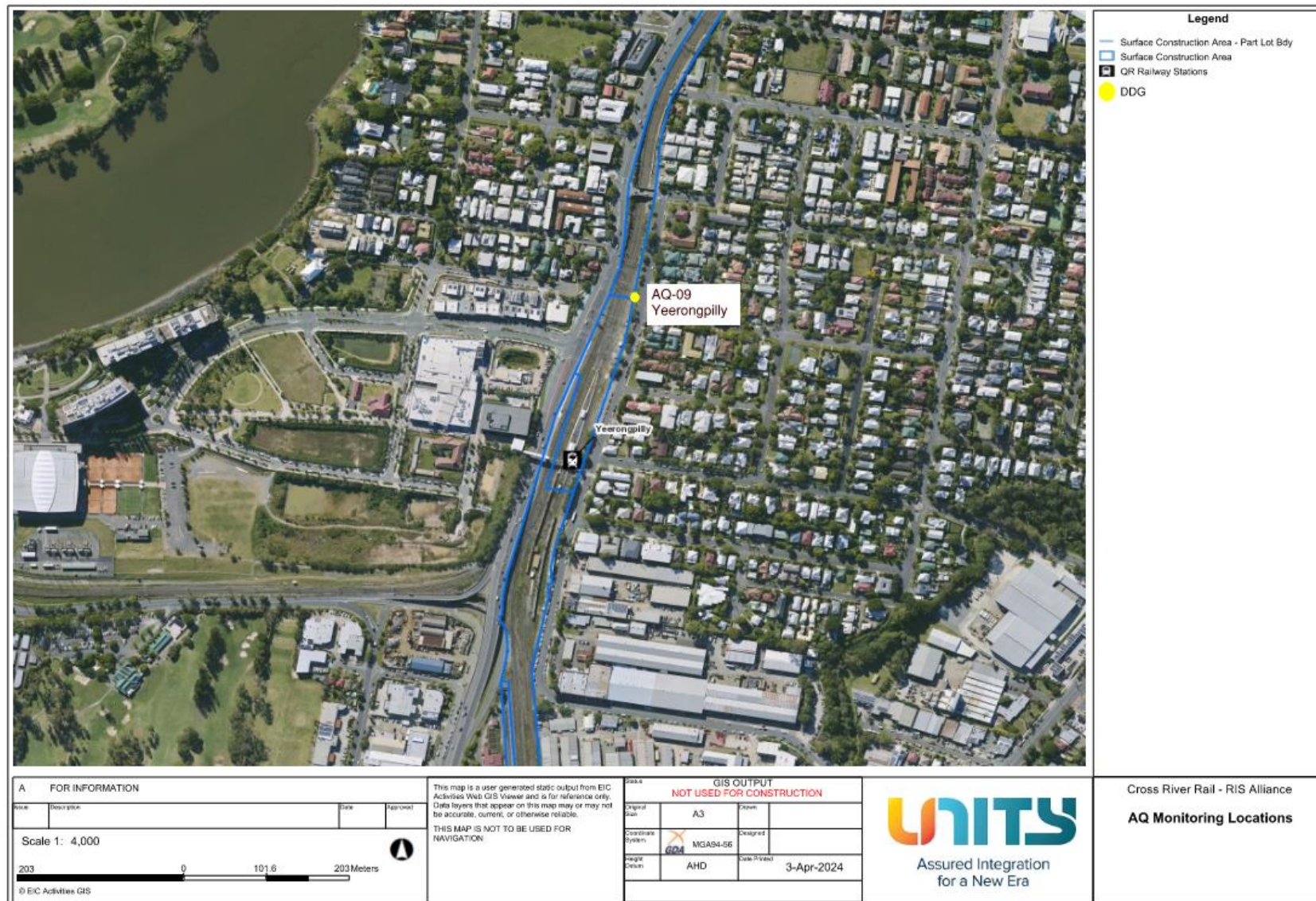


Figure 19: Yeerongpilly AQ locations

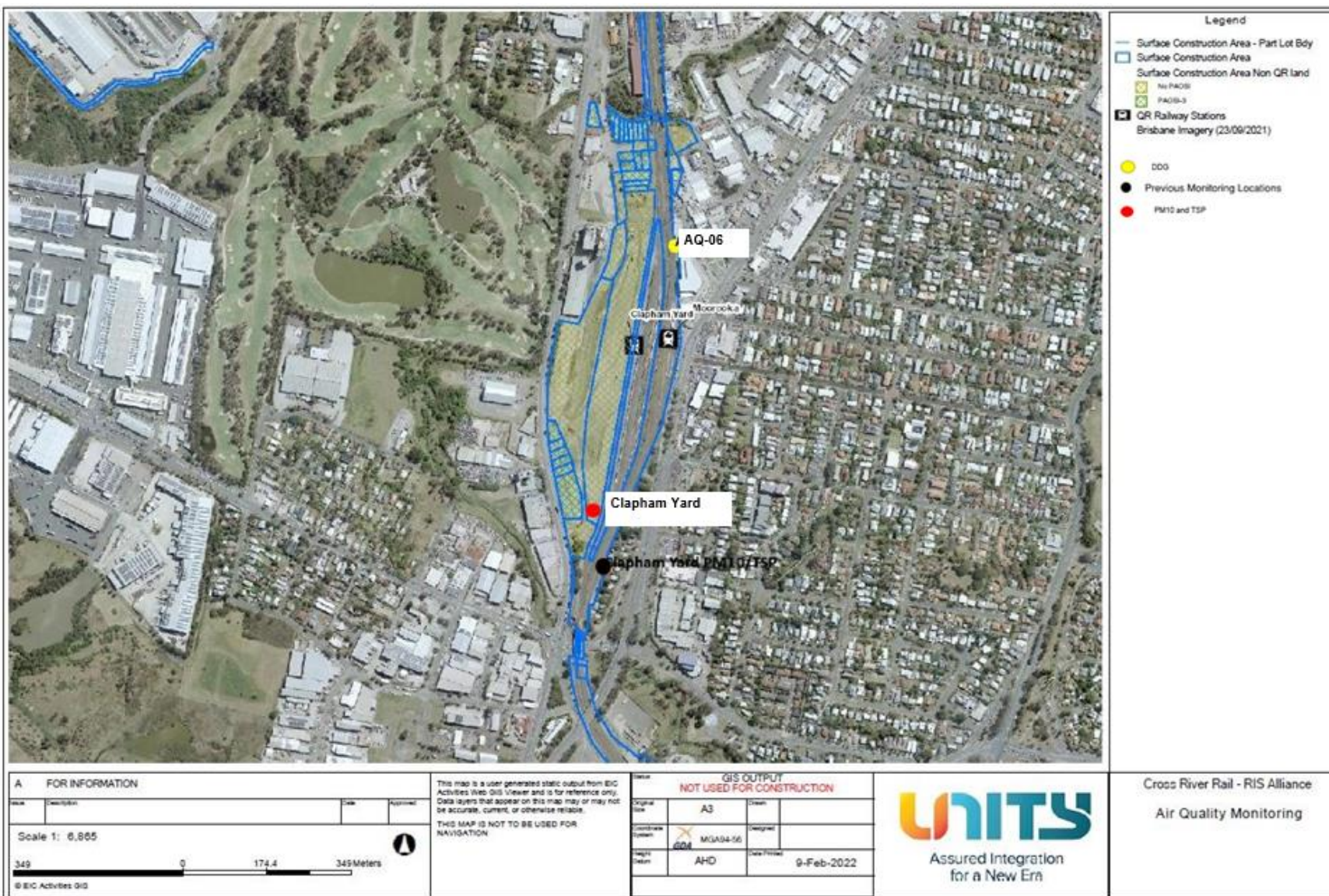


Figure 20: Clapham Yard AQ locations

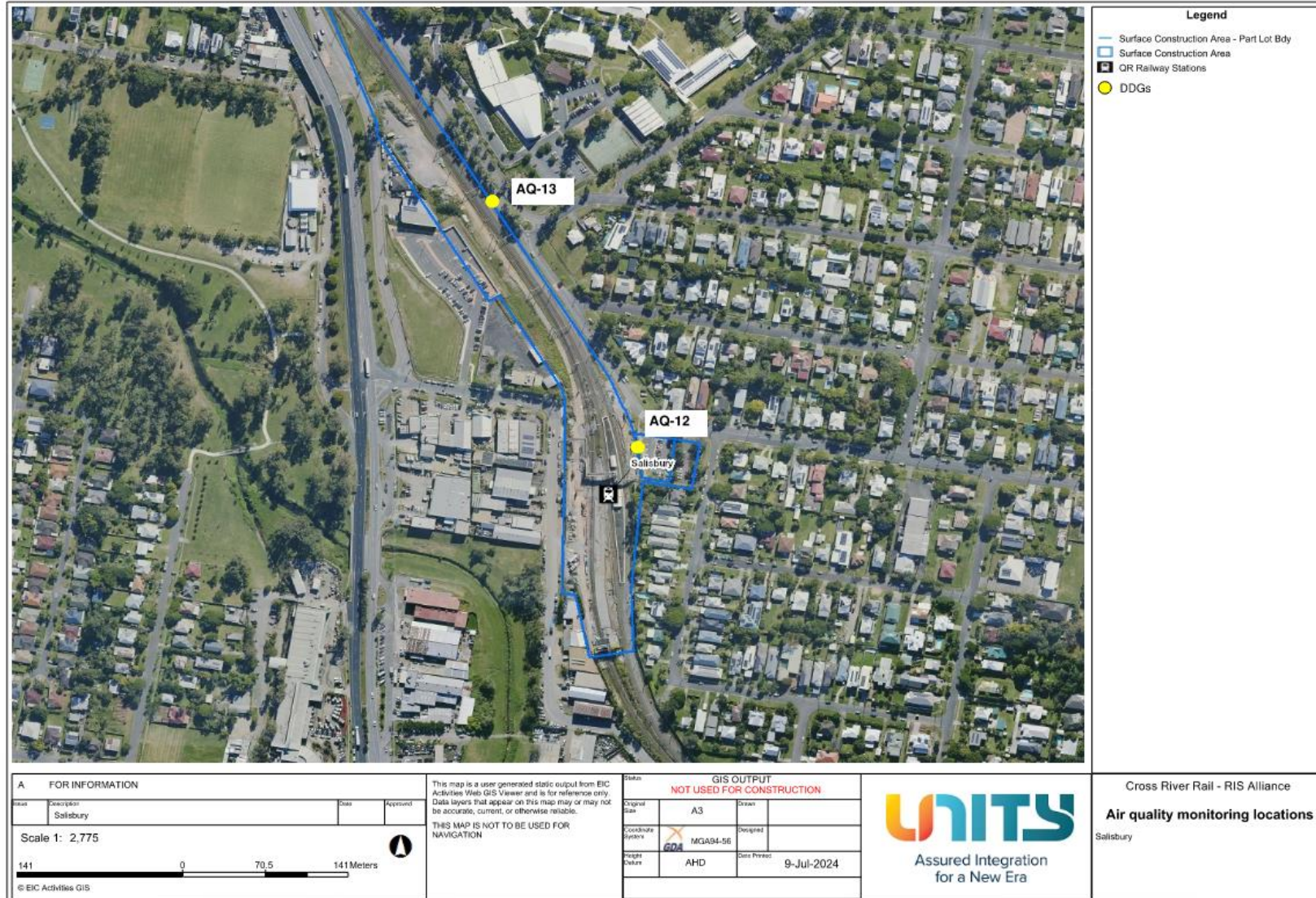


Figure 21: Salisbury AQ locations

Attachment 4 Monitoring Locations – Surface Water

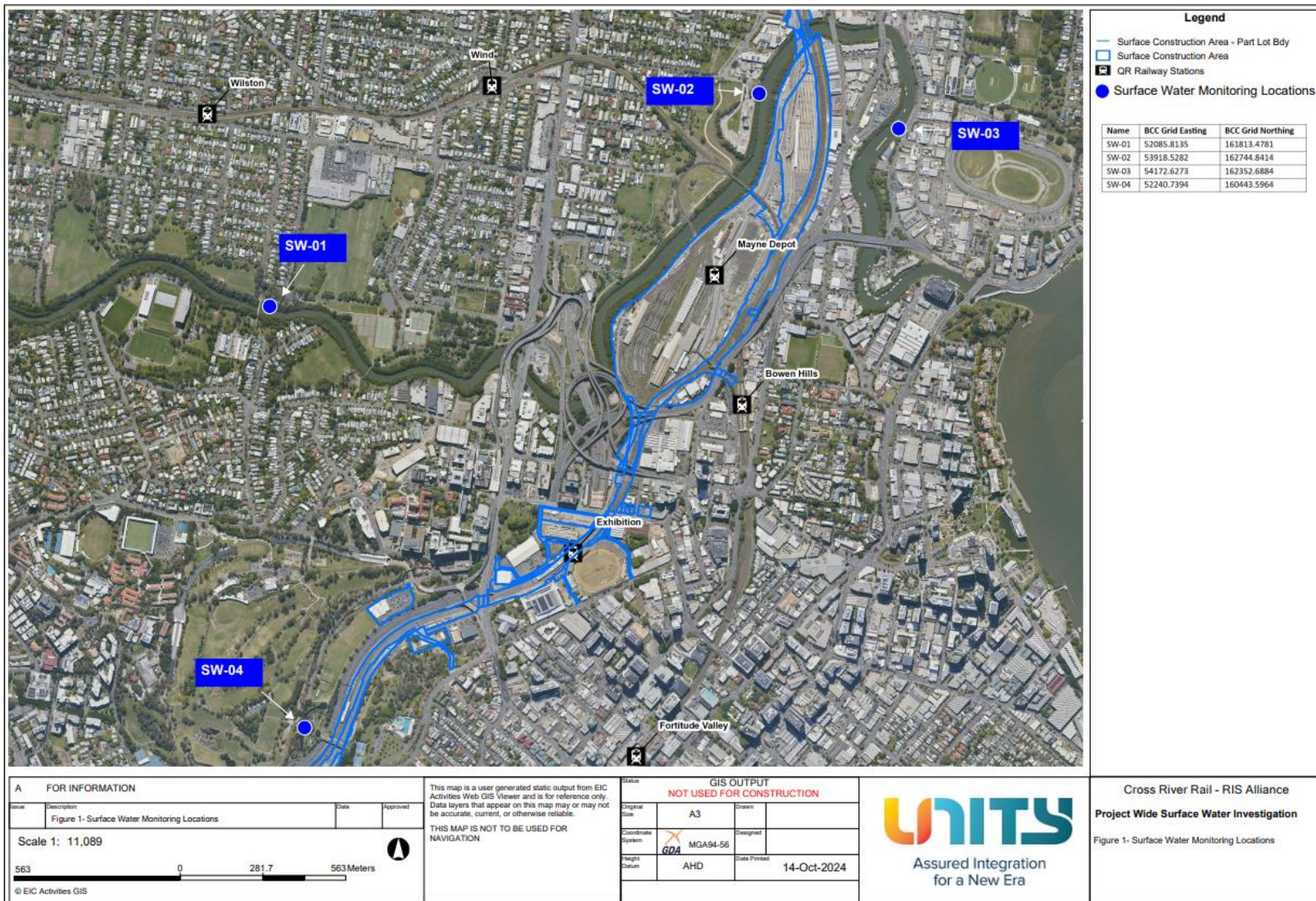


Figure 22: Northern WQ Locations

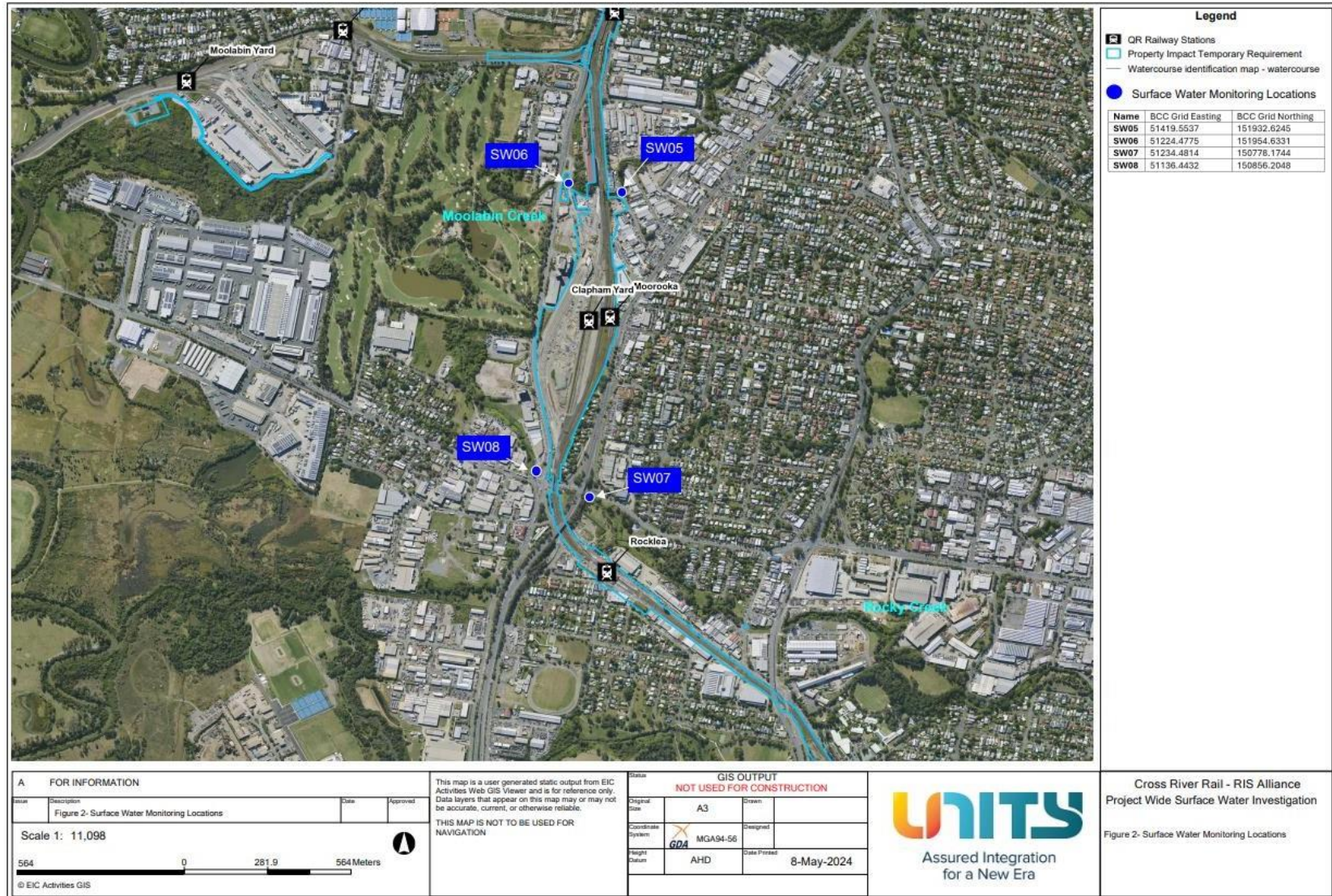


Figure 23: Southern WQ Locations

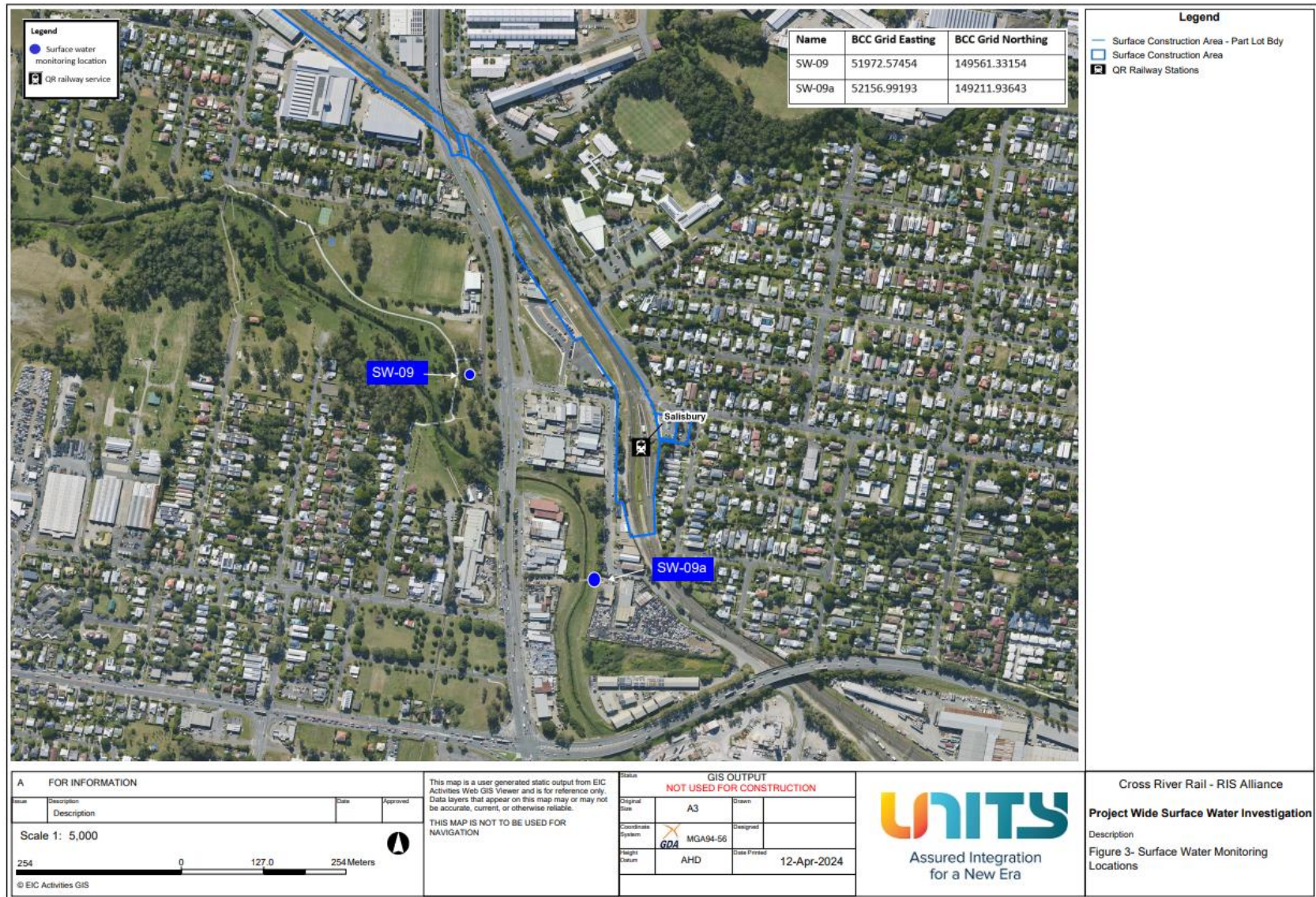


Figure 24: Southern WQ Locations

Appendix B TSD Monthly Report

COORDINATOR-GENERAL'S MONTHLY REPORT: JUNE 2025

Prepared in accordance with Coordinator-General Imposed Condition 6 - Reporting.

1. Monthly Monitoring Summary

It is CBGU Joint Venture's intent to aim for the Goals and Objectives relevant to vibration, noise, air quality and water monitoring within the practical extent of delivering the Project.

Vibration monitoring was not triggered or required during June 2025. Noise monitoring was performed on six (6) occasions in June 2025. Each monitoring event that was undertaken confirmed works adhered to Project requirements.

Ambient air quality monitoring was conducted at Roma Street, Albert Street, Woolloongabba, Boggo Road and Southern Portal precinct sites during June 2025. Air quality monitoring confirmed works adhered to Project requirements.

Water quality monitoring was conducted before the release of water from the site on nine (9) occasions. Each monitoring event confirmed that Project requirements were adhered to. One (1) round of surface water quality monitoring was conducted. The monitoring event confirmed that no impacts were generated by the Project.

2. Coordinator-General's Monthly Report – Compliance Assessment Against Imposed Conditions

Whilst not a requirement of Imposed Condition 6, CBGU offers the below Compliance Status Table as a goodwill gesture to demonstrate the Project's ongoing environmental performance.

Table 1: Compliance Status – CG Imposed Conditions

CG Condition	Requirement Summary	Compliance Met (Yes/No/NA)	Comment
1.	General Conditions – compliance with the Project Changes relevant to the Contractor's scope.	Yes	CBGU Project works have been conducted in compliance with the Imposed Conditions.
2.	Outline Environmental Management Plan – timely submission to the Coordinator-General, including required sub-plans.	N/A	The OEMP is not an obligation of the CBGU Joint Venture.
3.	Design – the achievement of the Environmental Design Requirements.	Yes	Design and implementation proceeded in accordance with the Environmental Design Requirements.
4.	Construction Environmental Management Plan – all relating to Relevant Project Works.	Yes	All CBGU works were conducted in accordance with the Construction Environmental Management Plan (CEMP) (Rev 12).
5.	Compliance and Incident Management – Non-compliance events, notifications, and reporting.	Yes	Nil non-compliances occurred during the monitoring period (refer to Section 4).
6.	Reporting – Monthly and Annual reporting.	Yes	All reporting requirements are completed in accordance with Imposed Condition 6.
7.	Environmental Monitor – engaged and functions resumed.	Yes	An Environmental Monitor (EM) is appointed to the Project, and CBGU is committed to working collaboratively to aid the EM's functions under Imposed Condition 7.
8.	Community Relations Monitor – engaged and functions resumed.	Yes	A Community Relations Monitor (CRM) is appointed to the Project, and CBGU is committed to working collaboratively to aid the CRM's functions under Imposed Condition 8.
9.	Community Engagement Plan – developed and endorsed by Environmental Monitor.	Yes	A Community Engagement Plan (CEP) has been developed and implemented in accordance with Imposed Condition 9. The CEMP has been endorsed with the CEP.
10.	Hours of Work – works undertaken during approved hours.	Yes	CBGU Project works have been conducted in accordance with the approved hours of work.

CG Condition	Requirement Summary	Compliance Met (Yes/No/NA)	Comment
11.	Noise – Work must aim to achieve internal noise goals for human health and well-being.	Yes	CBGU Project work has aimed to achieve internal noise goals for human health and well-being. Where internal noise levels have been unable to be measured, suitable noise reductions have been applied in accordance with Imposed Condition 11. Noise monitoring data is provided within Section 3.2.
	Vibration – Works must aim to achieve vibration goals for cosmetic damage, human comfort and sensitive building contents.	Yes	CBGU Project work has aimed to achieve vibration goals for cosmetic damage, human comfort and sensitive buildings. Vibration monitoring data is provided within Section 3.1.
12.	Property Damage relating to ground movement	Yes	The management of potential impacts relating to property damage has been completed in accordance with Imposed Condition 12.
13.	Air Quality – Works must aim to achieve air quality goals for human health and nuisance.	Yes	CBGU Project works have aimed to achieve air quality goals. Air quality monitoring data is provided within Section 3.
14.	Traffic and Transport – Works must minimise adverse impacts on road safety and traffic flow.	Yes	CBGU Project works have been conducted in a manner that has minimised adverse impacts on road safety and traffic flow.
15.	Water Quality – Works must not discharge surface water and groundwater from the construction site above the relevant environmental values and water quality objectives.	Yes	CBGU has prepared and managed processes to ensure water quality is managed in accordance with Imposed Condition 15.
16.	Water Resources – evaluate potential impact, plan works, implement controls and monitor the inflow of groundwater associated with drawdown.	Yes	CBGU Project works are managed in accordance with Imposed Condition 16.
17.	Surface Water – Must be designed to avoid inundation from stormwater due to a 2-year (6hr) ARI rainfall event and flood waters due to a 5-year ARI rainfall event and constructed to avoid afflux or cause the redirection of uncontrolled surface water flows, including stormwater flows, outside of worksites.	Yes	Design of the CBGU Project works considers the requirements of Imposed Condition 17.
18.	Erosion and Sediment Control – Provisions for erosion and sediment control must be consistent with the Guidelines for Best Practice Erosion and Sediment Control (International Erosion Control Association, 2008) and the Department of Transport and Main Roads' Technical	Yes	CBGU has prepared and managed processes to ensure erosion & sediment control is managed in accordance with Imposed Condition 18.

	Standard MRTS52.		
19.	Acid Sulfate Soils managed as per the <i>Queensland Acid Sulfate Soil Technical Manual</i> .	Yes	CBGU has prepared and managed processes to ensure acid sulphate soils are managed in accordance with Imposed Condition 19.
20.	Landscape and Open Space – general requirement to minimise impacts on landscapes and open space values and specific requirements around Victoria Park	Yes	CBGU Project works are designed and implemented in accordance with Condition 20.
21.	Worksite Rehabilitation – worksites rehabilitated as soon as practicable upon completion of works or commissioning, and in consultation with Brisbane City Council.	Yes	CBGU Project works are designed and implemented in accordance with Condition 21.
22.	Flood Water – Temporary emission to allow the release of Flood Waters to high flow receiving waters.	Yes	CBGU Project works have been conducted in accordance with the provisions available to manage floodwaters.

3. Environmental Monitoring Results

Monitoring data is provided below in accordance with Imposed Condition 6(b)(i).

3.1 Vibration

Vibration requirements (levels) are defined as goals within Imposed Condition 11. The goals are to be aimed for.

The Coordinator-General's Change Reports acknowledges instances where these goals may not be achieved.

Vibration monitoring was not triggered or required during June 2025.

Table 2: Vibration Monitoring Data

No.	Start Date	Time (AM/PM)	Finish Date	Location	Average Vibration level (mm/s)	Max Vibration Level (mm/s)	Vibration Goal (mm/s)	Receiver / Goal Type	Adhered to Project Requirements (Yes / No)
-----	------------	-----------------	-------------	----------	--------------------------------------	-------------------------------	--------------------------	----------------------	--

N/A

3.2 Noise

Noise requirements (levels) are defined as goals within Imposed Condition 11. The goals are to be aimed for.

The Coordinator-General's Change Reports acknowledge instances where these goals may not be achieved. Noise monitoring was conducted on six (6) occasions during June 2025. Noise monitoring adhered to project requirements and is detailed in the table below

Table 3: Noise Monitoring Data

No.	Date	Time (AM / PM)	Location (Street Name) (Construction Precinct)	Purpose of Monitoring	Internal or External ^[3] Monitoring	Activity	Dominant Noise Source	Noise Goal LA10 ^[1]	Noise level LA10	Noise Goal LAeq ^[2]	Noise level LAeq	Adhered to Project Requirements (Yes / No)
1.	2/06/2025	1:04:00 PM	Boggo Road (Boggo Road Precinct)	Model Verification	External	Demolition works	Construction	77	79.7	67	75.7	Yes
2.	9/06/2025	8:58:00 PM	Albert Street (Albert Street Precinct)	Model Verification	External	Demolition works	Construction	67	74.1	57	69.8	Yes
3.	18/06/2025	10:36:00 AM	Stanley Street (Woolloongabba Precinct)	Model Verification	External	Concrete works	Traffic	72	71.6	62	68.6	Yes
4.	19/06/2025	10:00:00 AM	Boggo Road (Boggo Road Precinct)	Model Verification	External	Equipment demobilisation	Construction	77	74.1	67	70.3	Yes
5.	19/06/2025	10:34:00 AM	Peter Doherty Street (Boggo Road Precinct)	Model Verification	External	Equipment demobilisation	Construction	67	70	57	67.1	Yes
6.	19/06/2025	2:16:00 PM	Mary Street (Albert Street Precinct)	Construction Monitoring at Sensitive Places	Internal	Demolition works	Office work	50	49.3	40	49.7	Yes

- [1] Intermittent noise goal (LA10)

- [2] Continuous noise goal (LAeq)

- [3] In accordance with Imposed Condition 11, where internal noise levels were unable to be measured, external noise goals were developed by an acoustic specialist using the following standards: ISO 140-5:1998 Acoustics – Measurement of Sound Insulation in Buildings and of Building Elements, Part 5: Field measurements of airborne sound insulation of façade elements and facades and ISO 354:1985 Acoustics – Measurement of sound absorption in a reverberation room.

3.3 Air Quality

3.3.1 Deposited Dust Results

Air quality requirements (levels) are defined as goals within Imposed Condition 13. The goals are to be aimed for. The Coordinator-General's Change Reports acknowledges instances when these goals may not be achieved. Dust deposition monitoring was performed in June 2025. The dust deposition gauge results for the reporting period are detailed below, and all monitoring data adhered to Project requirements.

Table 4: Air Quality Monitoring – June Deposited Dust Data

Location	Project Wide Air Quality Goals ^[1]			Monitoring results (mg/m ² /day)	Comments
	Criterion	Air Quality Indicator	Goal (mg/m ² /day)		
Roma Street Precinct	Nuisance	Deposited dust	120	- [2]	Air quality monitoring was performed during the reporting period. All results adhered to Project requirements.
Albert Street Precinct (North)				40.63	
Albert Street Precinct (South)				15.63	
Woolloongabba Precinct (North)				20.69	
Woolloongabba Precinct (South)				27.59	
Boggo Road Precinct (North)				3.03	
Boggo Road Precinct (South)				12.12	
Southern Portal (East)				15.15	

- [1] Project works must aim to achieve construction air quality goals. The Coordinator-General Change Report – Whole of Project Refinements 2019 acknowledges that instances exist in which these goals may not be achieved.

- [2] During the June monitoring period, the Roma Street dust sampling bottle and funnel were damaged, resulting in a void sample. As such, no data could be reported this month. The issue was rectified, and a new sample bottle and funnel have been installed.

3.3.2 Ambient Air Quality Results

Monitoring of Total Suspended Particles (TSP) and particulate matter less than 10µm (PM10) was conducted in June 2025.

TSP and PM10 are monitored using portable air quality units and nearby Government air quality stations. Targeted monitoring of potential dust-generating activities is conducted by the mobile air quality units and was completed at Woolloongabba, Albert Street and Boggo Road Precincts in June 2025. Three (3) Government air quality stations near the Construction Precincts are also utilised.

Table 5: Targeted Air Quality Monitoring – Total Suspended Particles and PM10 Data

Date	TSP	PM10	Woolloongabba		Albert Street		Boggo Road	
	Project Goal ^[1]	Project Goal ^[1]	TSP	PM 10	TSP	PM 10	TSP	PM 10
	(µg/m ³ /24 hr)							
01-June-25	80	50	- ^[2]	- ^[2]	- ^[3]	- ^[3]	5.52	5.46
02-June-25	80	50	4.53	4.44	- ^[3]	- ^[3]	5.46	5.42
03-June-25	80	50	5.14	4.94	- ^[3]	- ^[3]	3.47	3.36
04-June-25	80	50	- ^[2]	- ^[2]	11.50	7.98	3.63	3.57
05-June-25	80	50	- ^[2]	- ^[2]	7.60	7.55	5.32	5.23
06-June-25	80	50	16.65	16.42	4.92	4.91	13.02	12.96
07-June-25	80	50	15.40	15.19	- ^[3]	- ^[3]	16.23	16.14
08-June-25	80	50	4.74	4.57	- ^[3]	- ^[3]	9.08	8.96
09-June-25	80	50	- ^[2]	- ^[2]	- ^[3]	- ^[3]	4.55	4.45
10-June-25	80	50	4.34	3.87	- ^[3]	- ^[3]	2.66	2.58
11-June-25	80	50	4.95	4.56	7.72	7.70	3.31	3.21
12-June-25	80	50	- ^[2]	- ^[2]	6.50	6.44	6.86	6.80
13-June-25	80	50	- ^[2]	- ^[2]	- ^[3]	- ^[3]	6.69	6.60
14-June-25	80	50	23.34	22.82	- ^[3]	- ^[3]	14.03	13.97
15-June-25	80	50	1.31	1.22	- ^[3]	- ^[3]	20.26	20.21
16-June-25	80	50	- ^[2]	- ^[2]	14.82	14.79	18.32	18.24
17-June-25	80	50	- ^[2]	- ^[2]	20.32	20.32	29.90	29.82
18-June-25	80	50	- ^[2]	- ^[2]	- ^[3]	- ^[3]	12.59	12.47

Date	TSP Project Goal ^[1]	PM10 Project Goal	Woolloongabba		Albert		Boggo Road	
			TSP	PM 10	TSP	PM 10	TSP	PM 10
			(µg/m ³ /24 hr)					
19-June-25	80	50	- [2]	- [2]	- [3]	- [3]	9.73	9.66
20-June-25	80	50	- [2]	- [2]	- [3]	- [3]	11.29	11.22
21-June-25	80	50	- [2]	- [2]	- [3]	- [3]	7.80	7.76
22-June-25	80	50	- [2]	- [2]	6.81	6.81	8.75	8.70
23-June-25	80	50	- [2]	- [2]	9.88	9.88	10.55	10.49
24-June-25	80	50	- [2]	- [2]	- [3]	- [3]	12.39	12.32
25-June-25	80	50	- [2]	- [2]	- [3]	- [3]	7.11	6.79
26-June-25	80	50	- [2]	- [2]	- [3]	- [3]	8.58	8.42
27-June-25	80	50	- [2]	- [2]	- [3]	- [3]	10.10	10.02
28-June-25	80	50	- [2]	- [2]	5.35	5.34	7.10	7.07
29-June-25	80	50	- [2]	- [2]	5.96	5.96	7.76	7.68
30-June-25	80	50	- [2]	- [2]	- [3]	- [3]	- [4]	- [4]

- [1] Project works must aim to achieve construction air quality goals. The Coordinator-General Change Report – Whole of Project Refinements 2019 acknowledges instances where these goals may not be achieved.
- [2] The Woolloongabba air quality unit experienced technical difficulties throughout June 2025. As soon as practicable, the unit was inspected, and the issue was resolved. The fault continued to occur; as such, the unit has been sent to the technician to be examined. A nearby (South Brisbane) DETSI Air Quality Station demonstrated compliant air quality during this outage period.
- [3] The Albert Street air quality unit experienced intermittent technical difficulties throughout June 2025. As soon as practicable, the unit was inspected, and the issue was resolved. A nearby (Brisbane CBD) DETSI Air Quality Station demonstrated compliant air quality during this outage period.
- [4] The Boggo Road air quality unit experienced technical difficulties on the 30th of June 2025. The unit was inspected, and the issue was resolved. A nearby (Woolloongabba) DETSI Air Quality Station demonstrated compliant air quality during this outage period.

CBGU also utilise three (3) Government air quality monitoring stations to monitor PM10 near the Project sites. The results during this reporting period were as follows:

- Brisbane CBD: PM10 daily maximum average: **19.5 µg/m3/24 hr** (<https://apps.des.qld.gov.au/air-quality/chart/?station=cbd¶meter=18&date=1/06/2025&timeframe=month>)
- South Brisbane: PM10 daily maximum average: **22.5 µg/m3/24 hr** (<https://apps.des.qld.gov.au/air-quality/chart/?station=sbr¶meter=18&date=1/06/2025&timeframe=month>)
- Woolloongabba: PM10 daily maximum average: **20.5 µg/m3/24 hr** (<https://apps.des.qld.gov.au/air-quality/chart/?station=woo¶meter=18&date=1/06/2025&timeframe=month>)

The graphical representation of the Government air quality data is presented in the charts below (refer to Figure 1-3).

Particle PM₁₀ at Brisbane CBD, 1–30 June 2025 [about Particle PM₁₀](#)

[Brisbane CBD station overview](#)

The guideline for Particle PM₁₀ is 100µg/m³ (1hr avg) and 50µg/m³ (24hr avg).

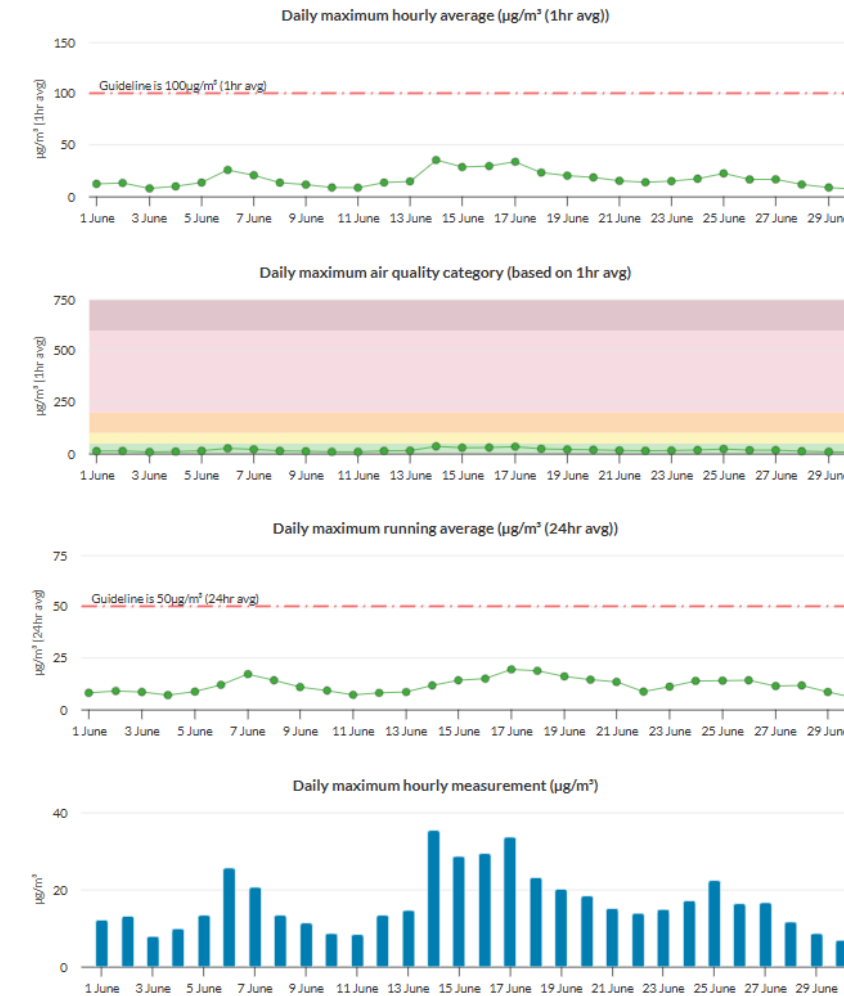


Figure 1: Brisbane CBD – DETSI Station - PM10 graph for June 2025 (reproduction from the DETSI website).

Particle PM₁₀ at South Brisbane, 1–30 June 2025 [about Particle PM₁₀](#)

[South Brisbane station overview](#)

The guideline for Particle PM₁₀ is 100µg/m³ (1hr avg) and 50µg/m³ (24hr avg).

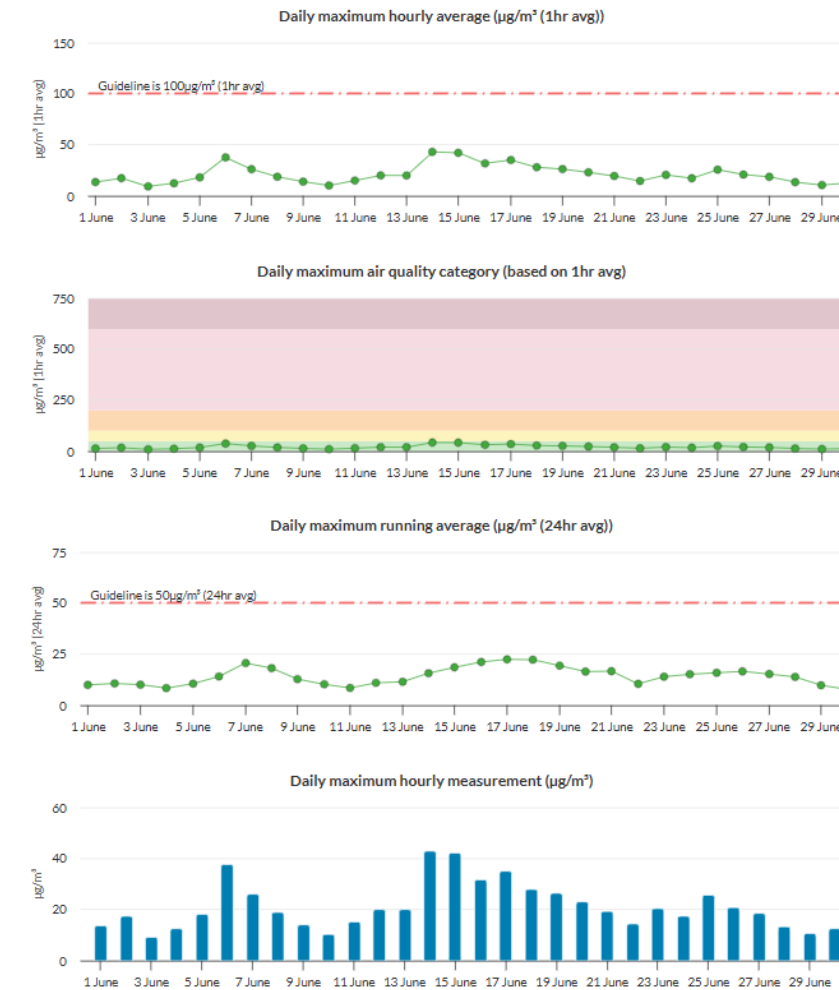


Figure 2: South Brisbane – DETSI Station - PM10 graph for June 2025 (reproduction from the DETSI website).

Particle PM₁₀ at Woolloongabba, 1–30 June 2025 [about Particle PM₁₀](#)

[Woolloongabba station overview](#)

The guideline for Particle PM₁₀ is 100µg/m³ (1hr avg) and 50µg/m³ (24hr avg).

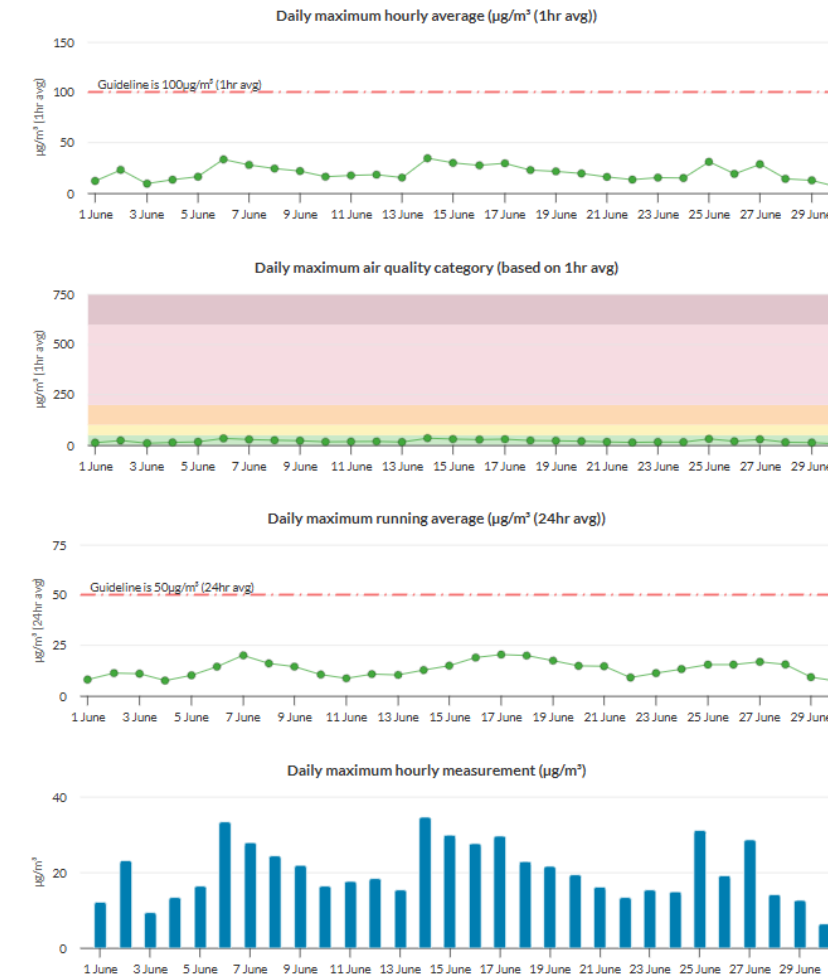


Figure 3: Woolloongabba – DETSI Station - PM10 graph for June 2025 (reproduction from the DETSI website).

3.4 Water Quality – Discharge

CBGU undertook nine (9) water quality monitoring events (groundwater and surface water) before the release from the site.

3.4.1 Groundwater Discharge

Water quality monitoring data is provided in the table below.

Table 6: Groundwater Discharge – Water Quality Monitoring Data

Location	Date	Testing of Water Quality Objectives ^[1]											Adhered to Project Requirements (Yes / No)
		pH	Suspended solids (mg/L)	Turbidity (NTU)	Ammonia N (µg/L) ^[3]	Oxidised N (µg/L) ^[3]	Organic N (µg/L) ^[3]	Total nitrogen (µg/L) ^[4]	Total phosphorus (µg/L)	Filterable Reactive phosphorus (µg/L) ^[3]	Chlorophyll a (µg/L)	Dissolved oxygen (%) ^[2]	
Boggo Road	12/06/2025	8.35	<5	3.50	370.00	600.00	400.00	1400.00	20.00	<10	<1	97.20	Yes
Woolloongabba	17/06/2025	7.25	<5	1.29	160.00	770.00	300.00	1300.00	20.00	<10	<1	100.62	Yes

- [1] The Project's discharge procedure minimises environmental impact and aims to achieve the water quality objectives. Water quality objectives are defined as goals within the Brisbane River estuary environmental values and water quality objectives document.
 - [2] All results adhere to Project requirements in that site practices are designed to aim to achieve the water quality objectives. The dissolved oxygen samples were acquired before discharge from the site. Pumping of the water will have inadvertently aerated the water, thus influencing the dissolved oxygen level.
 - [3] All results adhere to Project requirements in that site practices aim to achieve the water quality objectives. These samples identified results generally consistent with pre-construction conditions, and no external influences were introduced by construction activity.
 - [4] Total nitrogen levels adhered to Project requirements in that site practices are designed to aim to achieve the water quality objectives. The results are mostly below that of the receiving environment. They are also considered abnormal compared to results from previous months and are influenced by external factors (e.g. high rainfall events, overloaded sewage systems, fertilising natural areas, etc.) rather than related to construction activities.
- Note: Testing of EPP (Water) Quality Objectives is analysed monthly at a NATA-accredited laboratory (results provided above). Field testing (turbidity and pH) is conducted regularly during ongoing discharge.

3.4.2 Ponded/Surface Water Discharge

Discharged ponded/Surface water quality monitoring data is provided in the table below.

Table 7: Surface Water Discharge - Water Quality Monitoring Data

No.	Location	Date	Testing of Water Quality Objectives ^[1]		Adhered to Project Requirements (Yes / No)
			pH	Turbidity (NTU)	
1.	Northern Portal ^[2]	28/05/2025	8.40	0.80	Yes
2.	Northern Portal	2/06/2025	8.30	0.83	Yes
3.	Northern Portal	4/06/2025	8.10	0.83	Yes
4.	Northern Portal	7/06/2025	8.30	0.84	Yes
5.	Northern Portal	13/06/2025	8.43	0.42	Yes
6.	Southern Portal	14/06/2025	8.42	0.75	Yes
7.	Northern Portal	17/06/2025	8.34	3.11	Yes

- [1] The Project's discharge procedure is designed to minimise environmental impact and aims to achieve the water quality objectives. All discharges were compliant with Guidelines for Best Practice Erosion and Sediment Control (IECA, 2008) and the Department of Transport and Main Roads' Technical Standard MRTS 52 – Erosion and Sediment Control.
- [2] The Northern Portal data was not available at the time the May 2025 report was completed. As such, the results have been included in this month's report.

3.5 Water Quality – Surface Water

In June 2025, CBGU JV undertook one (1) round of surface water sampling at five (5) site locations (upstream and downstream).

The monitoring locations' results reflect the overall condition of the broader catchment, not just the project's influence. Water discharge from the project would not have impacted the catchment, considering the results also provided in section 3.4 above.

Table 8: Offsite Upstream & Downstream Water Quality Data

Location	Upstream / Downstream	Date	Purpose of Monitoring	Turbidity (NTU)	Dissolved oxygen (%)	pH
Roma Street	Upstream	2/06/2025	Monthly / Post Rainfall	8.73	94.86	7.79
Roma Street	Downstream	2/06/2025	Monthly / Post Rainfall	12.78	93.32	7.81
Albert Street	Upstream	2/06/2025	Monthly / Post Rainfall	7.48	95.40	7.85
Albert Street	Downstream	2/06/2025	Monthly / Post Rainfall	7.75	96.20	7.86
Northern Portal	Upstream	2/06/2025	Monthly / Post Rainfall	1.96	112.37	7.69
Northern Portal	Downstream	2/06/2025	Monthly / Post Rainfall	3.42	108.63	7.44
Woolloongabba	Upstream	2/06/2025	Monthly / Post Rainfall	6.24	112.36	7.67
Woolloongabba	Downstream	2/06/2025	Monthly / Post Rainfall	8.55	109.85	7.62
Boggo Road ^[1]	Upstream	2/06/2025	Monthly / Post Rainfall	9.71	96.80	7.62

- [1] Monitoring at the Boggo Road site occurs at a culvert outlet at the beginning of the surface catchment. There is no upstream or downstream monitoring point as such. The culvert outlet receives water released from the site and a broader stormwater catchment.

4. Non-Compliances

Details of non-compliances are provided in accordance with Imposed Condition 6(b)(ii).

A Non-Compliance Event is defined as Project works that do not comply with the Imposed Conditions. Nil non-compliances occurred during the monitoring period.

Table 9: Non-Compliance Events this Month

Event Title	Location, Date, and time of the event	Date the Event was Formally Notified to CG/IEM	Conditions Affected	Date the Event Report Formally Sent to CG/IEM	Status of Event
Nil					

5. Complaints

The reporting of complaints is provided below in accordance with Imposed Condition 6(b)(iii).

During June 2025, fourteen (14) complaints were received in relation to the CBGU Project works, as detailed in Table 10 below.

Table 10: Summary of Complaints

No.	Date	Location	Description of Issue	Responses	Status of Event
1.	04/06/2025	Albert Street (Albert Street Precinct)	Noise	A stakeholder contacted the Project regarding noise generated from the Albert Street worksite. CBGU provided the stakeholder with an overview of the works occurring and their duration. CBGU reviewed the circumstances, and monitoring confirmed that the works adhered to the Project's noise requirements and were consistent with the community notification.	Closed
2.	04/06/2025	Albert Street (Albert Street Precinct)	Noise	A stakeholder contacted the Project regarding noise generated from the Albert Street worksite. CBGU provided the stakeholder with an overview of the works occurring and their duration. CBGU reviewed the circumstances, and monitoring confirmed that the works adhered to the Project's noise requirements and were consistent with the community notification.	Closed
3.	04/06/2025	Mary Street (Albert Street Precinct)	Noise	A stakeholder contacted the Project regarding noise generated from the Albert Street worksite. CBGU provided the stakeholder with an overview of the works occurring and their duration. CBGU reviewed the circumstances, and monitoring confirmed that the works adhered to the Project's noise requirements and were consistent with the community notification.	Closed
4.	09/06/2025	Mary Street (Albert Street Precinct)	Noise	A stakeholder contacted the Project regarding noise generated from the Albert Street worksite. CBGU provided the stakeholder with an overview of the works occurring and their duration. CBGU reviewed the circumstances, and monitoring confirmed that the works adhered to the Project's noise requirements and were consistent with the community notification.	Closed
5.	09/06/2025	Roma Street (Roma Street Precinct)	Access	A stakeholder contacted the Project regarding access issues at Roma Street station due to malfunctioning elevator. CBGU provided the stakeholder with an update on the maintenance being completed. CBGU thanked the stakeholder for the feedback and provided the stakeholder with the hotline number.	Closed

6.	11/06/2025	Mary Street (Albert Street Precinct)	Noise	<p>A stakeholder contacted the Project regarding noise generated from the Albert Street worksite. CBGU provided the stakeholder with an overview of the works occurring and their duration.</p> <p>CBGU reviewed the circumstances, and monitoring confirmed that the works adhered to the Project's noise requirements and were consistent with the community notification.</p>	Closed
7.	12/06/2025	Mary Street (Albert Street Precinct)	Workforce behavior	<p>A stakeholder contacted the Project regarding workforce behaviour at CBGU's Albert Street worksite. CBGU investigated the event and reminded the workforce of employee expectations and appropriate behaviour. CBGU provided the stakeholder with contact details for the Community Relations Monitor, as requested.</p>	Closed
8.	13/06/2025	Albert Street (Albert Street Precinct)	Noise	<p>A stakeholder contacted the Project regarding noise generated from the Albert Street worksite. CBGU provided the stakeholder with an overview of the works occurring and their duration.</p> <p>CBGU reviewed the circumstances, and monitoring confirmed that the works adhered to the Project's noise requirements and were consistent with the community notification.</p>	Closed
9.	13/06/2025	Albert Street (Albert Street Precinct)	Noise	<p>A stakeholder contacted the Project regarding noise generated from the Albert Street worksite. CBGU provided the stakeholder with an overview of the works occurring and their duration.</p> <p>CBGU reviewed the circumstances, and monitoring confirmed that the works adhered to the Project's noise requirements and were consistent with the community notification and CG conditions of approval.</p>	Closed
10.	17/06/2025	Roma Street (Roma Street Precinct)	Workforce behavior	<p>A stakeholder contacted the Project regarding workforce behaviour at CBGU's Roma Street worksite. CBGU investigated the event and reminded the workforce of employee expectations and appropriate behaviour.</p>	Closed
11.	19/06/2025	Albert Street (Albert Street Precinct)	Noise	<p>A stakeholder contacted the Project regarding noise generated from the Albert Street worksite. CBGU provided the stakeholder with an overview of the works occurring and their duration.</p> <p>CBGU reviewed the circumstances, and monitoring confirmed that the works adhered to the Project's noise requirements and were consistent with the community notification.</p>	Closed
12.	24/06/2025	Roma Street (Roma Street Precinct)	Property Damage	<p>A stakeholder contacted the Project regarding personnel property damage because of the project. CBGU apologised for the inconvenience and communicated to the work crew the importance of signage when working in public places.</p>	Closed

13.	26/06/2025	Boggo Road (Boggo Road Precinct)	Traffic management	A stakeholder contacted the Project regarding parking near CBGU's Boggo Road worksite. CBGU investigated the event and reminded the workforce of parking requirements.	Closed
14.	27/06/2025	Albert Street (Albert Street Precinct)	Noise	A stakeholder contacted the Project regarding noise generated from the Albert Street worksite. CBGU provided the stakeholder with an overview of the works occurring and their duration. CBGU reviewed the circumstances, and monitoring confirmed that the works adhered to the Project's noise requirements and were consistent with the community notification and CG conditions of approval.	Closed