

# Works Notice

August 2025

## Hope Island station construction update

Acciona Georgiou Joint Venture (AGJV) has been awarded the contract to design and build Hope Island station, with major construction now underway.

Key construction activities to be carried out in August are outlined below



*Pictured: Station building construction underway at Hope Island station*

### Upcoming works

#### Station civil works

- Asphalt, kerb and pavement placement in the station carpark
- Installation of drainage, lighting and CCTV infrastructure
- Construction of the station pedestrian link bridge off Hope Island Road.

#### Station platform and building construction

- Construction of plaza and station building foundations and structural elements
- Installation of screening on the platforms
- Ongoing lift fit-out activities and construction of platform stairs
- Installation of platform, plaza and station building services
- Construction of the kiss'n'ride and bus bay areas.

#### Hope Island Road works

Ongoing day and night works including:

- General earthworks including excavation, rock placement and compaction
- Installation and maintenance of underground utility services and drainage infrastructure
- Relocation of fencing and barriers
- Asphalt, kerb, pavement placement and line marking activities.

### Rail corridor works

Some rail corridor works are planned outside the project's normal working hours to ensure works can be completed safely and efficiently. Out of hours rail corridor works are scheduled for:

- **2:00am Saturday 9 August to 2:00am Monday 11 August 2025**
- **2:00am Saturday 30 August to 2:00am Monday 1 September 2025**

### Changes to the way you travel

Construction of new stations, including Hope Island, on the Gold Coast line, can mean changes to your travel. We encourage you to consider your travel options, plan ahead and allow extra travel time by downloading the MyTranslink app, visiting [Translink.com.au](https://translink.com.au) or calling 13 12 30.

## Construction hours

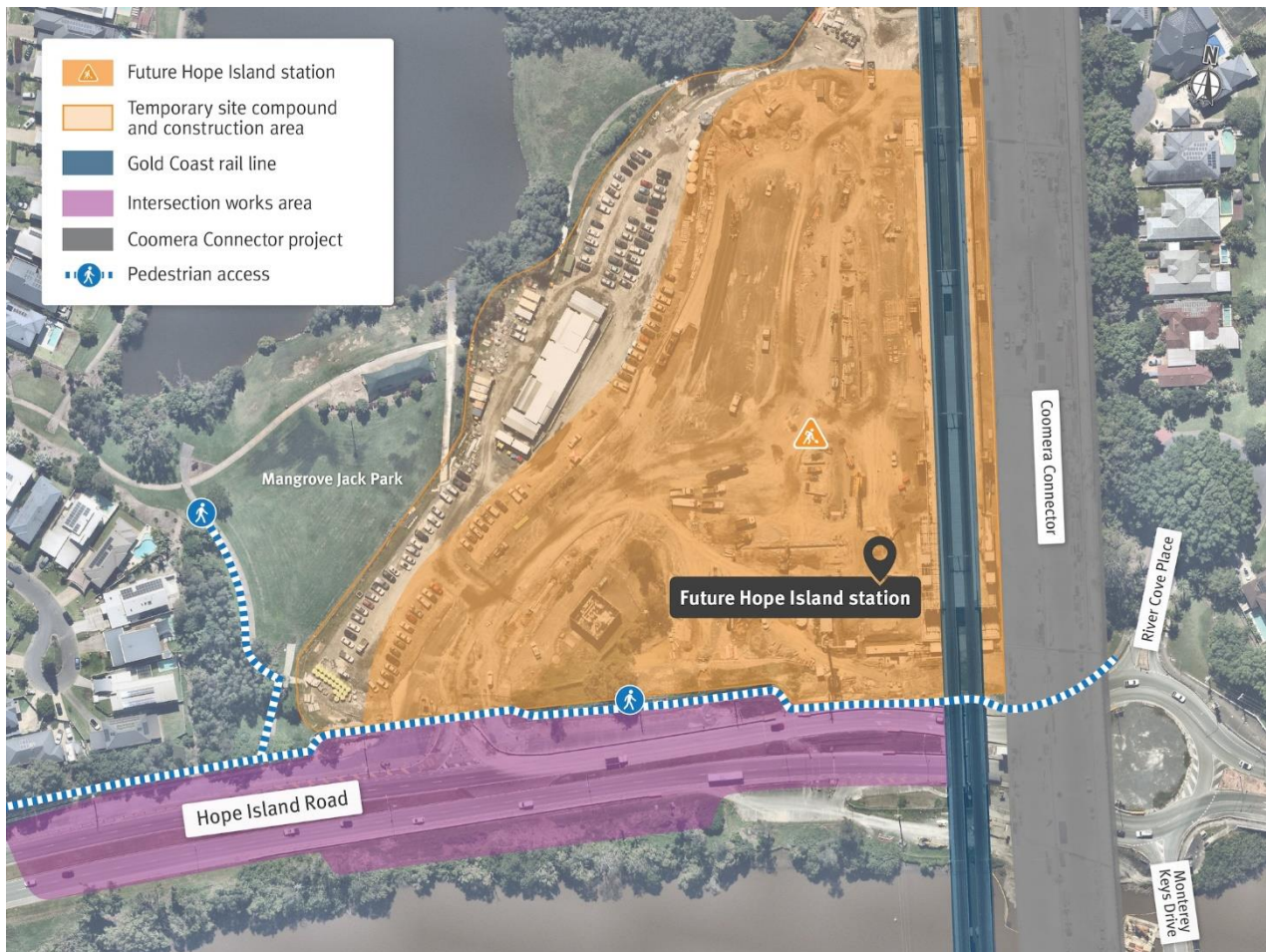
The majority of works will be undertaken between 7:00am and 5:00pm Monday to Saturday, weather and construction conditions permitting. Due to traffic permit requirements, ongoing works on Hope Island Road will also be completed out of hours between 7:00pm and 5:00am from Sunday to Thursday.

## What to expect

- Local traffic changes including intermittent lane closures and night works on Hope Island Road
- Construction activities may generate increased levels of noise, dust, and vibration associated with the use of construction equipment. Every effort will be taken to keep noise to a minimum
- Safety lighting and reversing squawkers will be in use; however, lighting will be positioned away from residential properties where possible
- The use of machinery including graders, excavators, trucks, compaction equipment, jackhammers and other rock breaking attachments, vacuum trucks, cranes, water carts, and other hand-held tools
- Increased truck movements to and from site
- Pedestrian changes in Mangrove Jack Park and along Hope Island Road. Please follow all relevant signage

We appreciate your patience while we work to build the new Hope Island station.

## Work area



## Project information

Visit [www.crossriverrail.qld.gov.au](http://www.crossriverrail.qld.gov.au) or scan the QR code to register to receive project updates.

To view and provide feedback on AGJV's Communication and Engagement Strategy email AGJV at [hopeislandstation@ag-jv.com.au](mailto:hopeislandstation@ag-jv.com.au) or call 1800 010 875.



1800 010 875



[hopeislandstation@ag-jv.com.au](mailto:hopeislandstation@ag-jv.com.au)



[crossriverrail.qld.gov.au](http://crossriverrail.qld.gov.au)



If you need an interpreter to assist you in understanding this document, please call the Translating and Interpreting Service (TIS National) on 131 450 and request to be transferred to Multicultural Affairs Queensland on 13 QGOV (13 74 68)

