

Works Notice

April & May 2024

Roma Street station Subway and Bus Platform Upgrades

In March, construction teams at Roma Street station subway reached some major milestones completing refurbishment of the architectural dome and reopening stair access to platform 6 and 7.

Throughout April and May, work will continue behind hoarding on the western side of the subway and on stair access to platform 4 and 5, platform 8 and 9, and in the garden bed at platform 10.

Details of work

Station subway

In March, hoarding was installed on the stair access to platforms 4 and 5, 8 and 9, and platform 10 to facilitate refurbishment works. Access to the platforms will be maintained at all times with work on the stairs undertaken in stages. Signage is in place to assist customers. Customers are encouraged to take care when accessing the platforms.

The following activities will continue to be undertaken within the station subway:

- minor rectification works in subway accessible toilet
- installation of hoarding around work areas
- removal of parts of the ceiling and station subway floor tiles using jackhammers and floor grinders
- refurbishment of platform stairs and central columns using jackhammers and floor grinders
- installation of new flooring, wall tiles, new ceiling panels and temporary flooring
- lighting upgrades
- make good of site lay down areas.



Complete architectural dome

Works are scheduled to occur between 6:30am and 6:30pm, Monday to Sunday, construction conditions permitting.

Due to operational requirements of Roma Street station and Brisbane Coach Terminal, out of hours works will be undertaken between 6pm and 5am Monday to Saturday. Residents may experience an increase in noise levels.

Busway platform 2

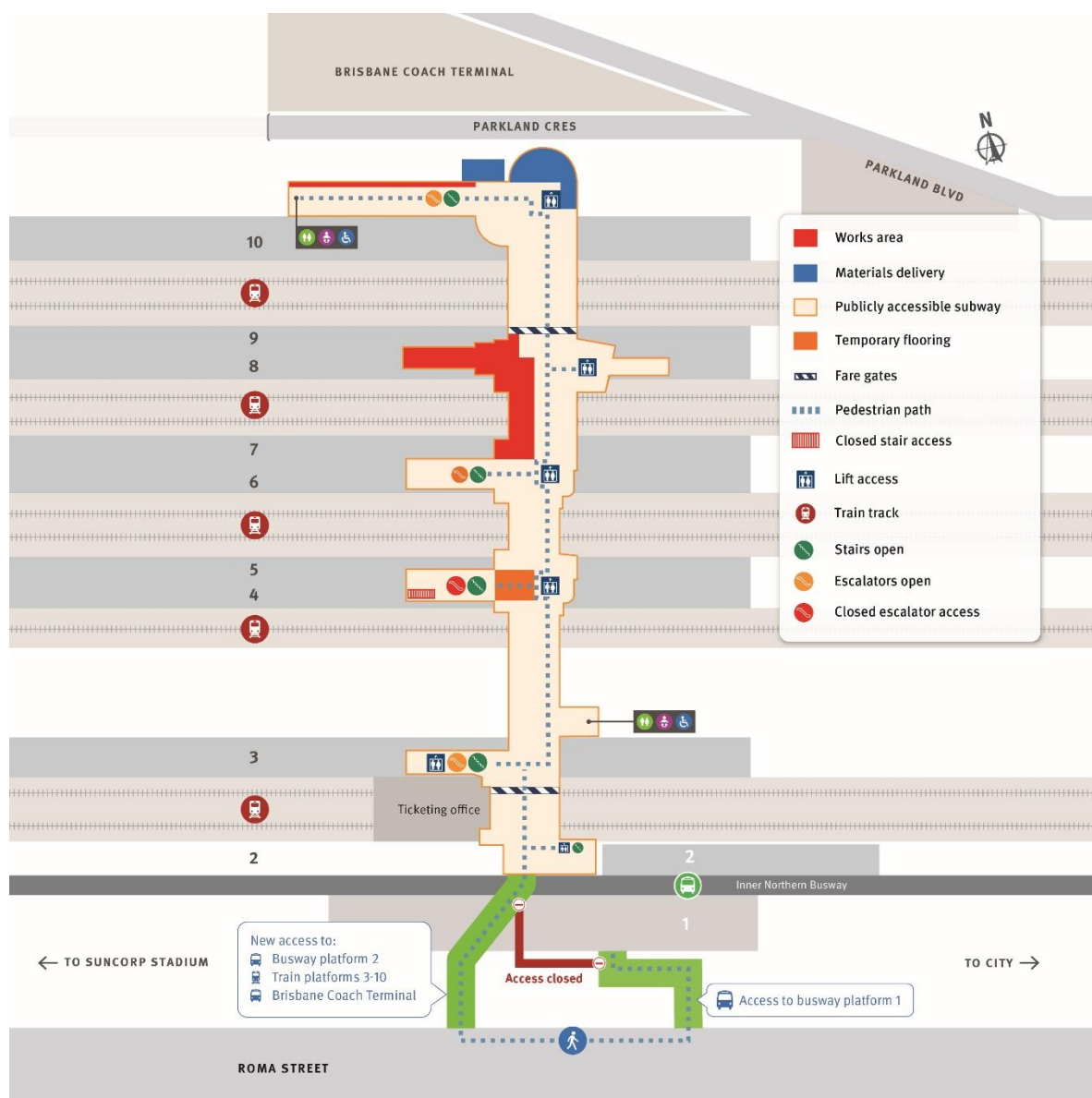
Monday to Sunday, from 11pm and 5am

Minor finishing works on bus platform 2 will continue to take place throughout April and May. Bus services will continue as normal during this time.

Due to busway operational requirements and for the safety of workers, construction will generally be undertaken outside the project's normal working hours, construction and weather conditions permitting.

Activities include:

- saw cutting to remove and reconstruct platform columns
- installing a new ceiling beneath the existing platform canopy
- installing platform tiles
- installing electrical components such as power and lighting.
- deliveries of equipment and materials via the Countess Street busway.



What to expect

During these works, access to platforms, lifts and the subway will be maintained with temporary and intermittent changes to customer access. Customers and the local community may notice an increase in construction activities and workforce, which may generate increased levels of noise, dust and vibration. Mitigation measures will be in place, where possible, to reduce impacts.

There will be intermittent use of concrete saws, jackhammers, grinders, small power tools, minor vibrating equipment, generators, concrete pumps, vacuum trucks and mobile lighting towers to light work areas at night.

Materials and machinery for subway works will be delivered and removed from site between 11pm and 5am via Parkland Crescent. Vehicle access through Parkland Crescent will be maintained under the direction of traffic control.

We appreciate your patience during construction and will continue to update you as work progresses.

Register to receive construction updates

The Cross River Rail Delivery Authority is committed to keeping stakeholders and the community informed about the project. If you have any questions or would like to find out more about the project, scan the QR code or contact the project team (see details below).



☎ 1800 010 875

✉ info@crossriverrail.qld.gov.au

🌐 crossriverrail.qld.gov.au



If you need an interpreter to assist you in understanding this document, please call the Translating and Interpreting Service (TIS National) on 131 450 and request to be transferred to Multicultural Affairs Queensland on 13 QGOV (13 74 68)

