

Works Notice

April & May 2024

Woolloongabba station construction update

The first piece of station art has landed at the Woolloongabba station. Measuring a total 16 metres high and 21 metres wide, the artwork can be seen in the main station atrium. The circles symbolise gathering sites that were an important part of Aboriginal life in this place. Here, Elisa Jane Carmichael acknowledges the ways the land would move and shift over time, as a result of walking, dancing and ceremony, creating patterns on the surface.

Having completed this major site milestone, escalator installation and other fit out works will continue in the main station atrium and station cavern. In the wider Woolloongabba station precinct, temporary traffic changes for utility works are ongoing on Main, Leopard, Gibbon, and other local streets. This work will enable utility services to be connected from the main service lines to the future Woolloongabba station.

Details of work

Rail construction and tunnel fit out.

Ongoing until end of project.



- Installing mechanical and electrical components such as cabling, fire safety mechanisms, walkways, communication networks lighting and CCTV.
- Excavating and demolishing temporary concrete ramps in the cavern and station box.
- Mass concrete pours for track installation.
- Materials delivery associated with rail installation and fit out.
- Rail track installation within the station box.

Station building, services building & surface works




Ongoing until end of project



- Assembling mezzanine precast beam segments and lifting the segments into the station box for installation. Cranes will operate during day and night shifts.
- Precast concrete beam assembly and concrete preparation.
- Platform construction and associated structures in the south cavern, north cavern and station box.
- Installing glazing, cladding, structural steel and escalators in the main station atrium.
- Continued mass earthworks to fill the decline ramp leading down into the station box.
- Vegetation removal where required.
- Concrete deliveries for related station structure pours**.
- Cutting and fixing steel reinforcement bars and mesh.
- Ongoing concrete pours to construct the building floors and walls.
- Mechanical and electrical fit out within the services building and basement levels.
- Installing fencing, earthworks, retention works and construction to build the retaining wall along the boundary of the Woolloongabba busway and Main Street. Detours will be in place and access changes around the Woolloongabba area.
- Utility service construction conducted by Energex and Telstra on Leopard Street, Main Street and Gibbon Street. These may require temporary traffic and pedestrian changes.
- Sewer inspection, survey, geotechnical works and water monitoring in and around the Woolloongabba site as well as in Main, Leopard and Gibbon streets. Some temporary lane/road closures and pedestrian footpath detours may be required for this work. Further notification to be provided.
- Assembling and installing the station canopy structure, escalators, lift shafts, and platform screen doors (PSD).
- Out-of-hours deliveries, mobilisation and demobilisation of large plant and vehicles due to traffic permit restrictions.
- Out-of-hours surface works will continue including hammering, water blasting, steel cutting / fixing, drainage and concrete pumping.

**Please note concrete deliveries to site are permitted 24/7. Work is subject to relevant approvals and suitable conditions.*

Key: construction work hours

	Standard construction hours 6:30am to 6:30pm, Monday to Saturday.	 Out of hours works Some activities will be completed out of normal construction hours, 6.30pm to 6.30am, due to traffic permits, logistics, safety requirements and construction methodology.	 Rail construction and tunnel fit out Tunnel fit out support activities and rail construction are undertaken 24 hours a day.
-------------------------------------------------------------------------------------	-----------------------------------------------------------------------------	---------------------------------------------------------------------------------------------------------------------------------------------------------------------------------------------------------------------------------------------------------------------------------------------	-----------------------------------------------------------------------------------------------------------------------------------------------------------------------------------------------------------------------------

What to expect

- Potential noise, dust, and vibration from construction activities both underground, in the tunnels and on the surface of the site, including outside of standard construction hours.
- Temporary lighting for out-of-hours works in the station box, decline ramp and busway work area.
- 24-hour ongoing underground work along the tunnel alignment.
- Out-of-hours deliveries of large trucks and plant. This includes mobilisation, set up and demobilisation. Short term road closures in the area may also be required.
- Continued utility investigations, surveying, geotechnical works and service relocation activities, both on and off site. Temporary pedestrian and lane detours and closures may be required to facilitate these works.
- Ongoing intermittent lane, road and footpath detours and closures at Gibbon Street, Stanley Street service road, Leopard Street and Main Street.
- Ongoing footpath closure between Main Street and Woolloongabba station platform 2 due to retaining wall works.
- Temporary footpath reopening during AFL game days between Platform 2 and Main Street – see detour map below.

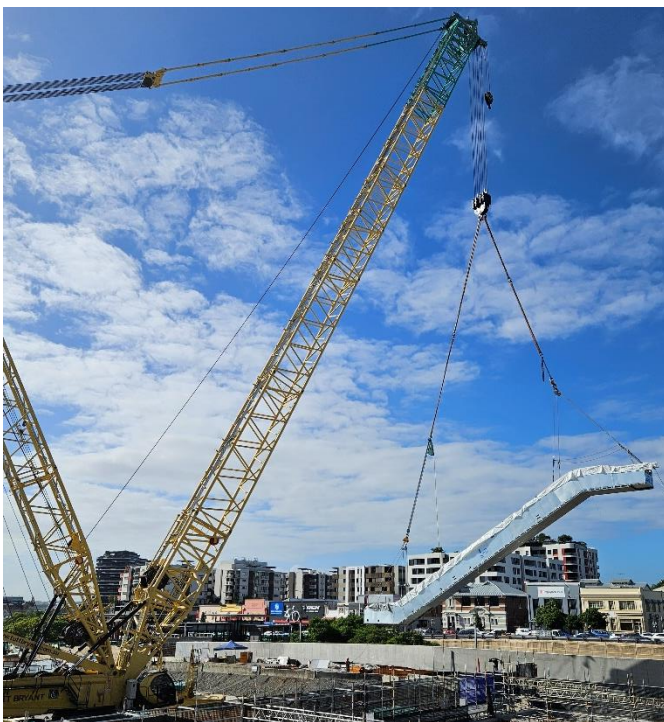
Pedestrian access at Woolloongabba station

Catching a bus to an upcoming AFL game?

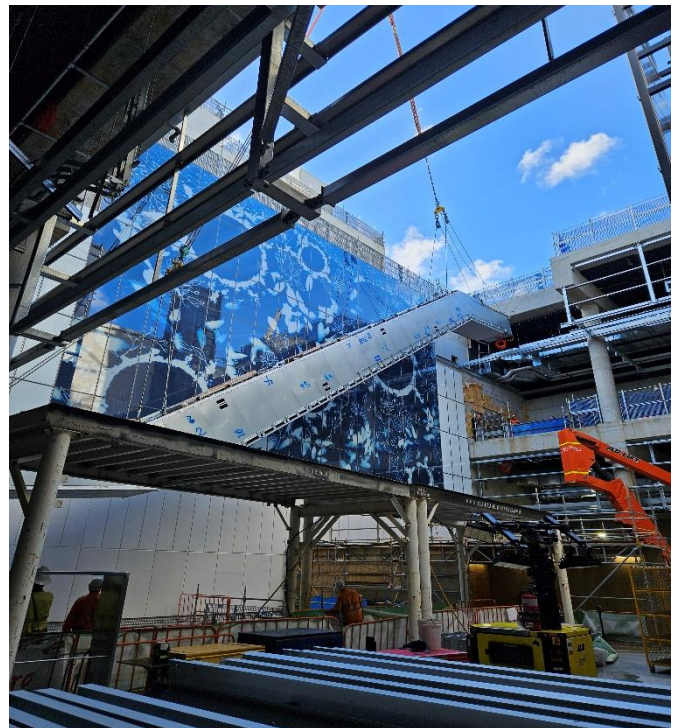
A temporary footpath is now open on AFL games between Main Street and Woolloongabba station platform 2.

Access to platform 1 is via Stanley Street. You can also continue to use the pedestrian overpass which has both lifts and stars.

For further information, please visit translink.com.au or call 13 12 30.



Pictured (left): Woolloongabba escalator being lifted by 800T crawler crane prior to installation.



Pictured (right): Escalator installation and completed station artwork in the main station atrium at the Woolloongabba Station.

Register to receive construction updates:

To receive emails regarding traffic changes and construction around and at our Woolloongabba station worksite, scan the QR code or send your name to crossrverrail@cbgujv.com.au

Every effort will be made to minimise the impact of this work on businesses, residents and commuters. If you have any questions regarding this work, please call **1800 010 875** or email crossrverrail@cbgujv.com.au.



☎ 1800 010 875

✉ crossrverrail@cbgujv.com.au

🌐 crossrverrail.qld.gov.au



If you need an interpreter to assist you in understanding this document, please call the Translating and Interpreting Service (TIS National) on 131 450 and request to be transferred to Multicultural Affairs Queensland on 13 QGOV (13 74 68)

