

Work Notice

April & May 2024

Albert Street station construction update

At the Albert Street main station entrance (Lot 1), the jump form system continues to build the station internal walls, with the system soon to reach the ground floor level.

Below the surface in the Albert Street cavern (Lot 2), the track floor slab on either side of the platform has been constructed, with rail tracks now being installed. On platform level, Platform Screen Doors (PSD) work has started, as well as other ongoing cavern fit-out activities.

At the northern station entrance site (Lot 3), above ground wall construction is almost complete, lower basement fit-out activities continue, and the team will commence roofing installation in the coming months.

Green Spine

As part of Cross River Rail, a new public realm on Albert Street between Elizabeth and Mary streets will realise part of Brisbane City Council's 'Green Spine' vision for Albert Street. Construction on the Green Spine is planned to commence shortly so please ensure you are registered for our project updates.



Lot 1 – Main station entrance site (corner of Mary and Albert streets)



- Concrete preparation using high pressure water (green cutting).
- Cutting and fixing steel reinforcement bars and mesh.
- Formwork installation and alterations for jump form construction.
- Large concrete pours (requiring night and early morning work) involving concrete trucks and pumps parked on Mary Street, and Albert Street near Charlotte Street. This may require partial lane closures and temporary stop-and-go traffic arrangements.
- Heavy plant movement (during the day and at night) including cranes, transport and delivery of materials, equipment and machinery.
- Underground station building fit-out including block work, and mechanical and electrical service installation.
- Site facility adjustments and ongoing utility work investigations involving partial gantry changes, and traffic and pedestrian changes on Mary Street near Albert Street.
- Mary Street partial lane closure to be reinstated for full road access from Friday 29 March to Monday 1 April. Mary Street partial lane closure to be extended until late-April 2024 due to weather conditions.

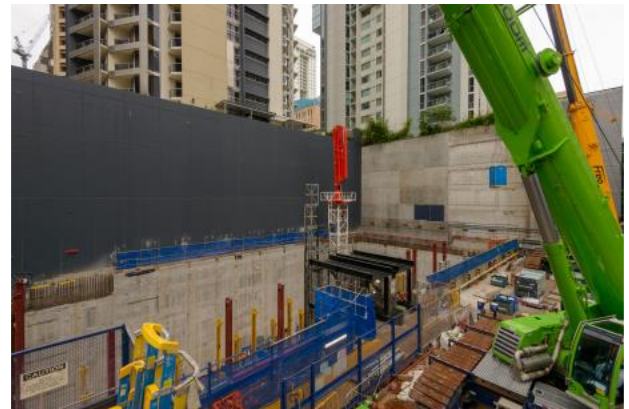


Image caption (above): Albert Street main station entrance (Lot 1) construction site.

Lot 2 – Activities within the acoustic shed and in the underground cavern



- Installing formwork, steel fixing reinforcement bars and mesh, and concrete pouring activities.
- Rail installation for both the northern and southern line on top of the track floor slab adjacent to the station platform.
- Delivery and installation of structural steel, rail sleepers and rail tracks.
- Mechanical and electrical fit-out beneath platform culverts and on the cavern ceiling ahead of delivery and installation of escalators and platform screen doors.
- Back of house and mezzanine fit out including installing block work, cable trays, heating, ventilation and air conditioning (HVAC) systems.
- Delivery and transport of materials, equipment, and machinery.



Image caption (right): Ongoing fitout works, including Heating, Ventilation and Airconditioning system (HVAC) on the mezzanine level in the Albert Street station cavern.

- Large concrete pours (requiring night and early morning work) involving concrete trucks and pumps parked on Albert Street near Charlotte and Elizabeth Streets.
- Concrete preparation using high pressure water (green cutting).
- Installing formwork, cutting and fixing steel reinforcement bars, scaffolding and concrete pours above ground.
- Installing steel posts and assembling shutters above ground.
- Delivery and installation of precast concrete walls and permanent structural steel columns to support the outer walls and station canopy.
- Site adjustment works at the back of Lot 3 worksite.
- Site facility adjustments including partial gantry changes and intermittent footpath detours from 9:00pm-5:00am for overhead lifts.
- Mechanical and electrical service installation and fit-out including block work, door frame installation and lift installation.



Image caption (above): Albert Street northern station entrance (Lot 3) above ground construction.

Local streets – Albert Street between Alice and Queen streets: Elizabeth, Charlotte and Mary streets



- Installing, maintaining and removing monitoring equipment and services.
- Utility and pavement investigations, involving small coreholes in footpath to investigate electrical pits.
- Decommissioning underground water well on Mary and Charlotte streets and Elizabeth Streets. Works may involve a temporary lane diversion under the direction of Traffic Controller whilst working is being carried out.
- Removal of tower crane. Further information to be provided when available.
- Utility, borehole and geotechnical locating, investigations and maintenance.
- Vegetation maintenance.
- Permanent service and utility connections.
- Manhole relining.

What to expect

During construction of the new station buildings and underground platform, there will be an increase in workforce and vehicles at the three Albert Street sites for the transport of materials, equipment and machinery.

Nearby residents and businesses may also experience an increase in dust, noise and vibration.

For your safety, intermittent temporary pedestrian and traffic holds and diversions will be in place near the worksites during concrete pours and other deliveries to the sites. Please follow all directions of traffic controllers.



Construction hours



Standard construction: 6:30am – 6:30pm
Monday to Saturday.



Out of hours, 6:30pm – 6:30am
Some activities will be completed out of normal construction hour due to traffic permits, safety requirements and construction methodology. Register for weekly email updates. See right.



Underground and support activities
24 hours a day, 7 days per week.

Albert Street station design

The first CBD train station built in more than 120 years, Albert Street station will dramatically improve connectivity to the southern part of the CBD. Scan here for more information about the design of the Albert Street station.



We encourage you to please register for project updates by emailing crossriverrail@cbgujv.com.au to stay up to date.