

Works Notice

April – May 2024

Exhibition station construction update

During February and March 2024, fit out of the station shade canopy continued, along with concrete works within the station plaza and retaining walls. In April and May 2024 station fit out will continue along with commissioning of track and overhead electrical equipment between Exhibition station and the Normanby rail corridor.

From 26 April 2024, overhead rail infrastructure between Exhibition station and the Normanby rail corridor will be energised, meaning overhead electrical wires will be 'live'. Test trains could be running through this area at any time.

Details of work

The following activities are scheduled to occur between 6:30am and 6:30pm, Monday to Saturday during April and May 2024, weather and construction conditions permitting:

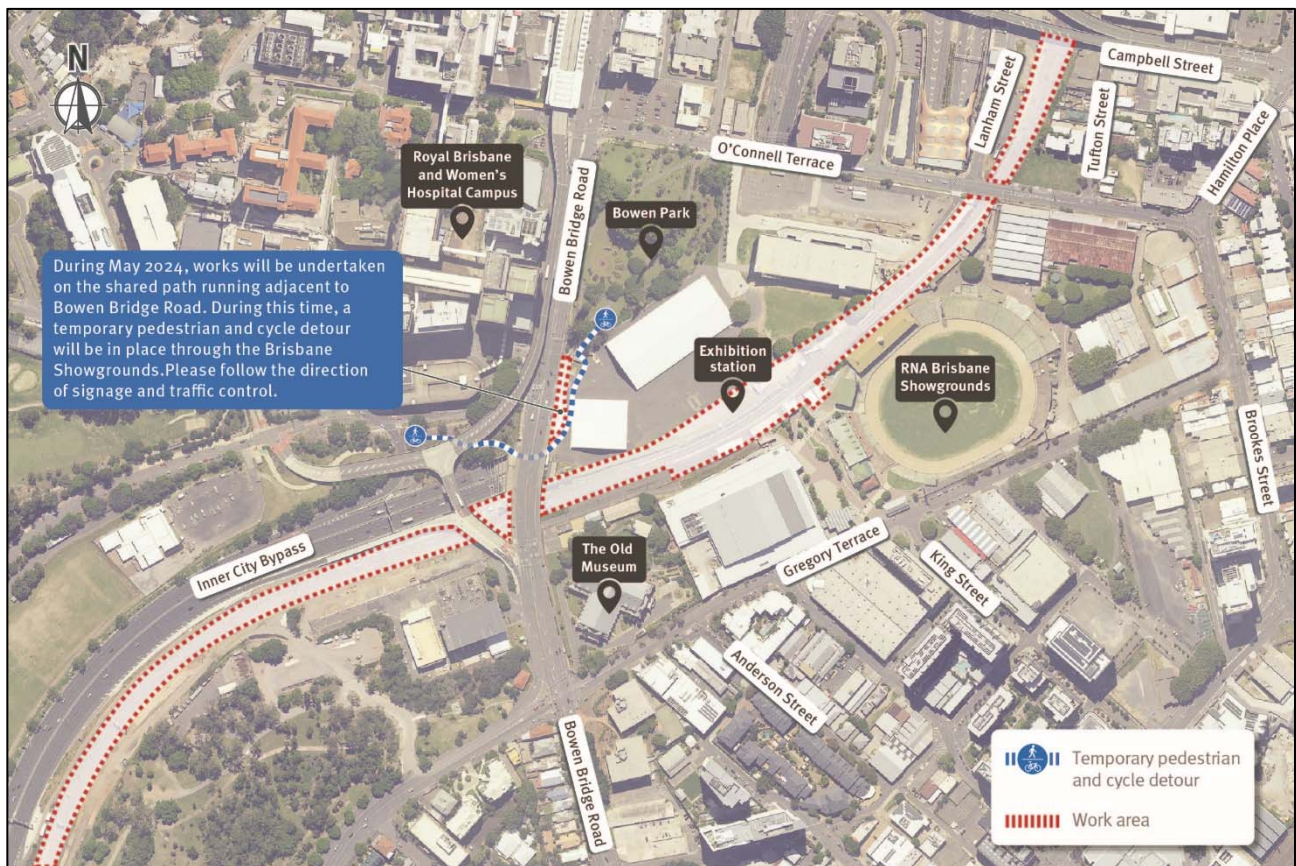
- Installation of mast foundations and structures for overhead electrical lines and cable routes and pits within the rail corridor between Campbell Street and south of Bowen Bridge Road
- Rock excavation within the rail corridor between Campbell Street and Bowen Bridge Road
- Continue construction of a new shared path between Bowen Bridge Road and the station entry
- Paving of the station platforms, installation of structural steel, concrete for the new station plaza and fit out of station canopy
- APA gas pipeline cutover works in the cul-de-sac of Campbell Street, Bowen Hills
- Construction of station retaining walls and new railway bridge
- Track work and maintenance.

Out of hours work

Additional activities will occur outside the project's normal working hours, as outlined below:

Location	Date and hours of work	Type of work
Spring Hill and Bowen Hills	Night shift Intermittently between 6:30pm and 6:30am throughout April and May 2024	<ul style="list-style-type: none"> • Concrete deliveries and pours • Installation of cable routes and pits within the rail corridor including pulling new cables in conduits • Minor earthworks and rock excavation to support signalling and inground services • Installation of structural steel and concrete pours for new station bridges and retaining walls • Station fit out and service installation • Track work and maintenance.
	Between 2:00am Tuesday 2 April to 2:00am Friday 26 April 2024	<ul style="list-style-type: none"> • Rock excavation and earthworks between Campbell Street, Bowen Hills and Victoria Park, Spring Hill • Installation of overhead electrical structures, mast foundations, signalling equipment, cable routes and pits within the rail corridor • Installation of structural steel and concrete pours for new station bridges and plaza • Earthworks and installation of drainage.

Work area Exhibition station precinct in April and May 2024



What to expect

During these works you may notice some intermittent disruptions such as:

- Use of large machinery such as excavators with hydraulic hammers to remove rock, cranes and concrete pumps for concrete structures between Campbell Street and Bowen Bridge Road and loading material into trucks for transport
- Pedestrian and cycle detour adjacent to Bowen Bridge Road and the Brisbane Showground entry
- Changes around your local area such as construction vehicles, traffic management signs and personnel
- Increased levels of noise, vibration and dust associated with the use of heavy machinery and equipment
- Access into the rail corridor will be via the Victoria Park access road, Bowen Bridge Road, Lanham Street and O'Connell Terrace via the Brisbane Showgrounds.

If you would like to speak with a member of the UNITY Alliance Project Team about these planned works, please contact 1800 010 875 or email info@unityalliance.com.au anytime for more personalised consultation.

Cross River Rail won't just transform Brisbane, it will transform the way we travel across South East Queensland. But building Cross River Rail means changes to travel and transport services during construction. Plan your journey by downloading the MyTranslink app, visit translink.com.au or call 13 12 30.

We appreciate your patience during construction and will continue to update you as work progresses.