

Works Notice

April 2024

Rocklea station construction

During April 2024, UNITY Alliance will continue service relocation works, overpass and station building fit out, drainage works, retaining walls, platform and commuter carpark construction.

Details of work

The following activities are scheduled to occur between 6:30am and 6:30pm, Monday to Saturday during April 2024, weather and construction conditions permitting:

- Continue construction of the commuter carpark and station entry including concreting and landscaping
- Continue fit out of the new pedestrian overpass and lifts including electrical, lighting and flooring
- Continue fit out of station building and platforms including installation of services (e.g., water, electrical).

Out of hours work

The following activities will occur outside the project's normal working hours, as outlined below:

Location	Date and hours of work	Type of work
Rocklea station and rail corridor	Intermittently between 6:30pm and 6:30am during April 2024	<ul style="list-style-type: none">• Delivering materials and equipment onto station platforms and removal of materials from site• Station platform and building concrete pours, including dewatering using vacuum trucks when required• Station canopy construction including welding and grinding.
	Between 2:00am Monday 8 and 12:00am Sunday 14 April 2024	<ul style="list-style-type: none">• Installation of structural steel for station buildings and canopies• Installation of overhead electrical wire foundations and masts• Cable service route installation including excavation (and drilling), and installation of under track crossings for services (e.g., water, electrical)• Platform construction including installation of coping edge (tiles) and tactiles, buildings fit out and installation of services (e.g., water, electrical).

What to expect

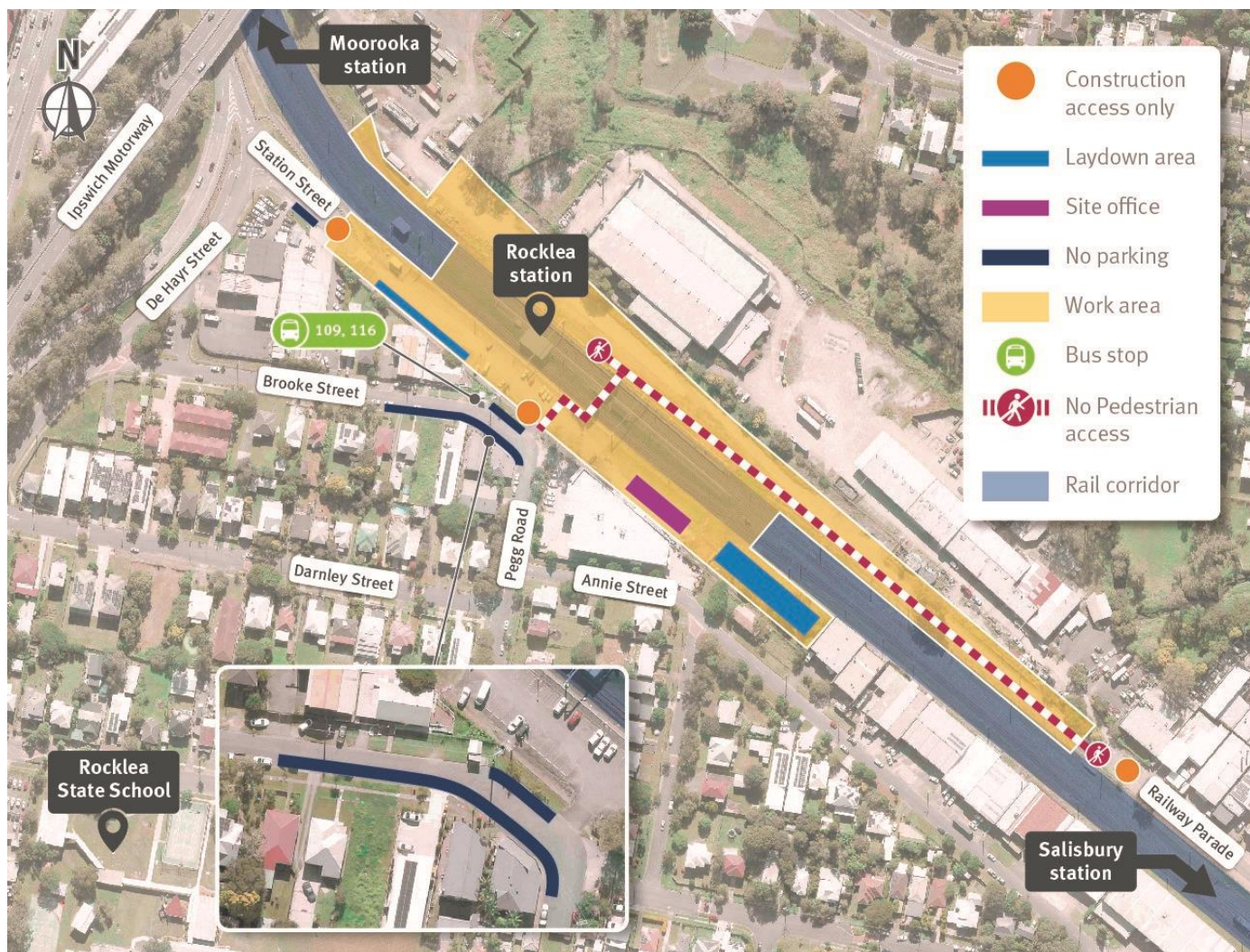
During these works you may notice some intermittent disruptions such as:

- Trucks and machinery including loaders, excavators with jackhammers and rock breakers (when required), vacuum trucks, concrete trucks, pump trucks, mobile cranes, saws, small power tools, minor vibrating equipment, and mobile lighting towers to light work areas at night
- Changes around your local areas such as construction vehicles, traffic management signs and personnel
- Increased noise, vibration and dust associated with the use of heavy machinery and equipment.

There will be track closures and travel changes on the Gold Coast and Beenleigh lines from Friday 29 March until Sunday 14 April to undertake crucial Cross River Rail works and Queensland Rail maintenance. We encourage you to consider your travel options, plan ahead and allow extra travel time. Please plan your journey in advance by downloading the MyTranslink app, visiting translink.com.au or calling 13 12 30.

We appreciate your patience during construction and will continue to update you as work progresses.

Work areas and construction access points at Rocklea station



Work at Rocklea station is progressing with fit out of the station overpass and lifts, station buildings and canopies continuing.