

# Works Notice

March 2024

## Construction update Dutton Park station

During February 2024, UNITY Alliance continued platform 1 and 2 construction, installed platform shade canopies and continued fit out of the pedestrian overpass.

In March 2024 works will continue with the fit out of station buildings, pedestrian overpass and platform shade canopies.

### Details of work

The following activities are scheduled to occur between 6:30am and 6:30pm, Monday to Saturday during March 2024, weather and construction conditions permitting:

- Continue construction of a new retaining wall near Cope Street and the Annerley Road and Cornwall Street intersection
- Continue construction of platforms 1 and 2 including the installation of structural steel, precast units and concrete pours
- Construction of a rail corridor maintenance access at Fenton Street, Fairfield
- Continue construction of the new station entrances on both Noble Street and Annerley Road including earthworks, concrete works and structural steel
- Continue construction of a retaining walls along Kent Street including shotcrete and piling works
- Minor earthworks and drainage tie-in works on Ensign Avenue
- Continue construction of a retaining wall under Annerley Road bridge.

### Out of hours work

The following activities will occur outside the project's normal working hours, weather and construction conditions permitting:

Location	Date and hours of work	Type of work
Sampson Street, Cope Street and Annerley Road	Between 6:30pm and 6:30am throughout March 2024	<ul style="list-style-type: none"> <li>• Out of hours concrete pours for construction of platforms 1 and 2</li> <li>• Service identification using a vacuum truck around the station precinct</li> <li>• Track work and maintenance.</li> </ul>
Rail corridor between Ensign Avenue and Kent Street	Between 12:00am Saturday 2 March to 3:00am Monday 4 March 2024	<b>Day shift</b> <ul style="list-style-type: none"> <li>• Piling for retaining wall construction near Kent Street including concrete deliveries and pours</li> <li>• Drainage and earthworks in the rail corridor.</li> </ul>
	Between 2:00am Saturday 16 March to 3:00am Monday 18 March 2024	<b>Day and night shift</b> <ul style="list-style-type: none"> <li>• Platform 1 and 2 construction</li> <li>• Installation of overhead electrical structures, signalling equipment, cable routes and pits within the rail corridor</li> <li>• Cable service route installation in proximity to Kent Street, Fenton Street and Ensign Avenue.</li> </ul>
	Between 2:00am Friday 29 March to 2:00am Monday 14 April	<ul style="list-style-type: none"> <li>• Earthworks to support signalling installation and under track crossings</li> <li>• Rail deliveries, track construction and maintenance.</li> </ul>

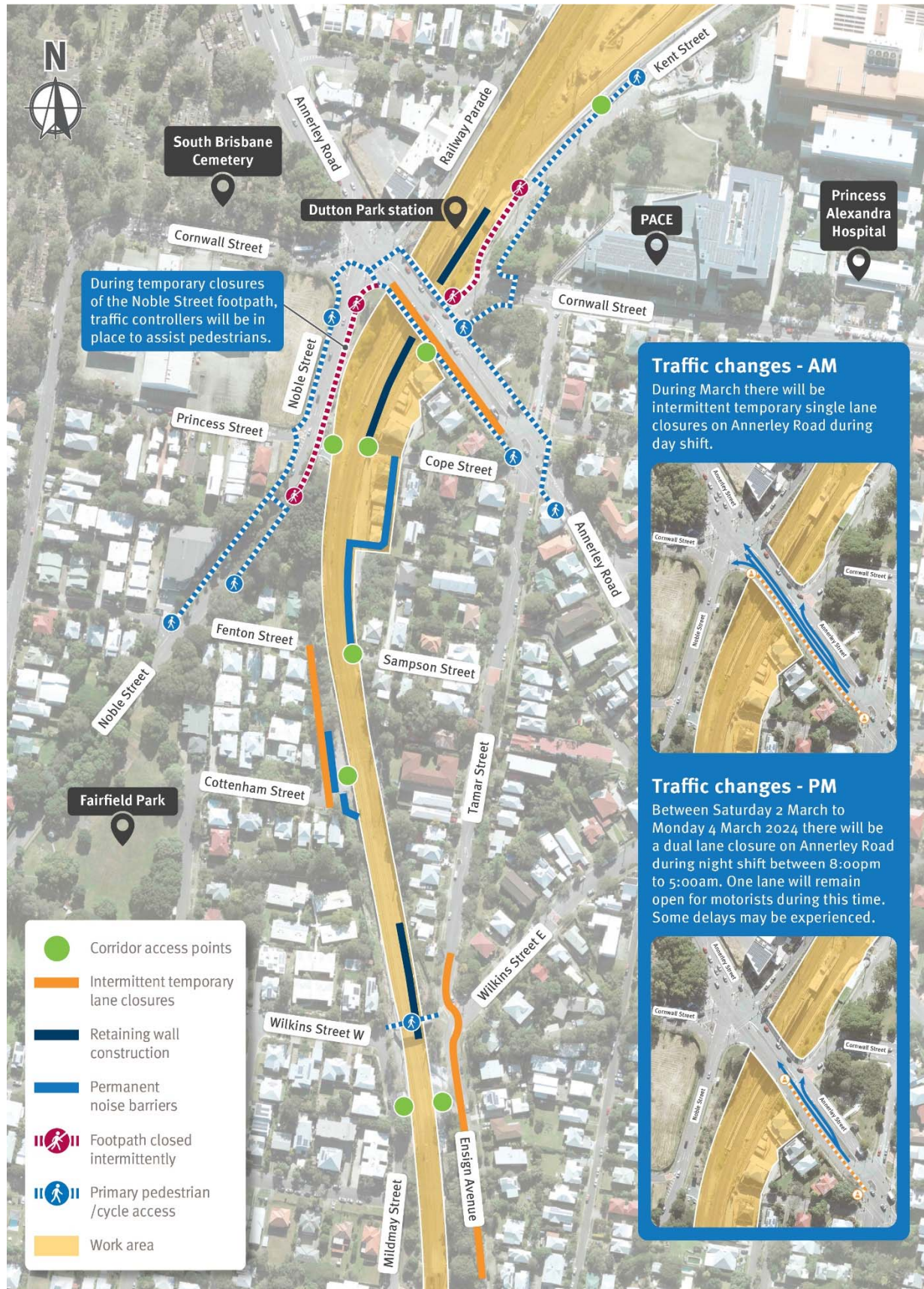
### What to expect

During these works you will notice some disruptions such as:

- Access into the corridor will be via Annerley Road, Cope Street, Fenton Street, Noble Street, Kent Street, Sampson Street, Mildmay Street and Ensign Avenue. Traffic management will be set up to manage an increase in vehicle movements in these areas. Please follow the direction of traffic control and signage and allow for extra time to travel
- Increased noise, vibration and dust associated with the use of heavy machinery and equipment
- Trucks and machinery including concrete trucks and pumps, frontend loaders, excavators with rock breakers, vacuum trucks, piling rig, mobile cranes, small power tools, minor vibrating equipment and mobile lighting towers to light work areas at night.



## Rail corridor access points, work areas and pedestrian detours during March 2024



We appreciate your patience during construction and will continue to update you as work progresses.