

# Works Notice

February – March 2024

## Construction update Mayne Yard

**In February and March 2024, works will continue in the Mayne Yard stabling facility including earthworks, track modifications, removal of redundant structures, installation of foundations and new masts for overhead electrical wires.**

### Details of work

During February and March 2024, the following activities are scheduled to occur between 6:30am and 6:30pm, Monday to Saturday, weather and construction conditions permitting:

- Continue installation of inground services within Mayne Yard East
- Commence installation of fencing within Mayne Yard East
- Continue construction of the new rail bridge over Breakfast Creek
- Continue earthworks to construct new road and rail formation
- Installation of foundations and masts for overhead electrical wires
- Ongoing installation of cable routes and pits within the rail corridor
- Decommissioning of redundant track, track reconstruction and maintenance.

### Out of hours work

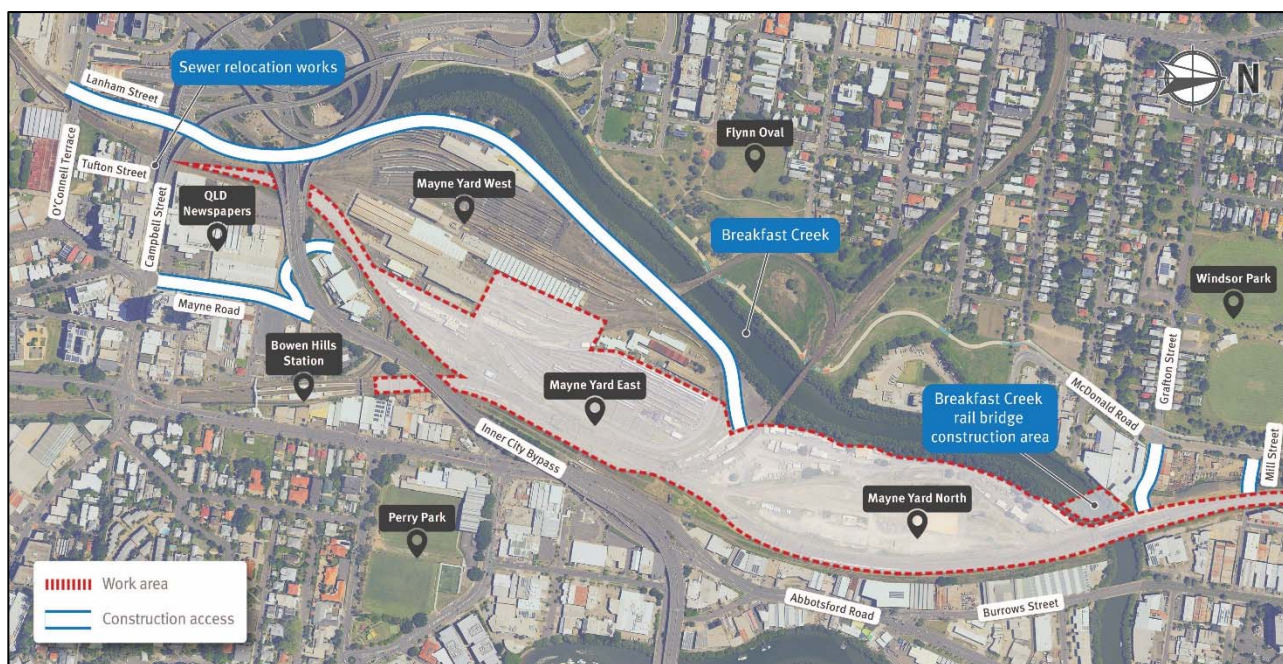
Additional activities will occur outside the project's normal working hours, as outlined below:

Location	Date and hours of work	Type of work
Mayne Yard, Bowen Hills	Intermittently between 6:30pm and 6:30am throughout February and March 2024	<ul style="list-style-type: none"> <li>• Concrete works including placement of formwork, steel fixing and concrete pours</li> <li>• Delivery of materials to site</li> <li>• Installation of conduits and pulling new cables</li> <li>• Track work and maintenance.</li> </ul>
	Between 3:00am Saturday 3 February to 12:00am Sunday 4 February 2024	<ul style="list-style-type: none"> <li>• Installation of overhead electrical structures, signalling equipment, cable routes and pits within the rail corridor</li> </ul>
	Between 10:30am Wednesday 14 February to 2:00am Friday 23 February 2024	<ul style="list-style-type: none"> <li>• Decommissioning of redundant tracks and services</li> <li>• Breakfast Creek rail bridge construction</li> <li>• Test pitting and service location works</li> </ul>
	Between 10:30am Friday 1 March to 10:00pm Sunday 10 March 2024	<ul style="list-style-type: none"> <li>• Earthworks and drainage</li> <li>• Track work and maintenance.</li> </ul>
	Between 2:00am Friday 29 March to 2:00am Monday 22 April 2024	

**Cross River Rail will transform the way we travel to, from, and through Brisbane in the future. But right now, construction means disruption to train services. Sign up to receive updates at our website and use Translink's journey planner at [translink.com.au](https://translink.com.au), call 13 12 30 or download the MyTranslink app to plan your journey.**

We appreciate your patience during construction and will continue to update you as work progresses.

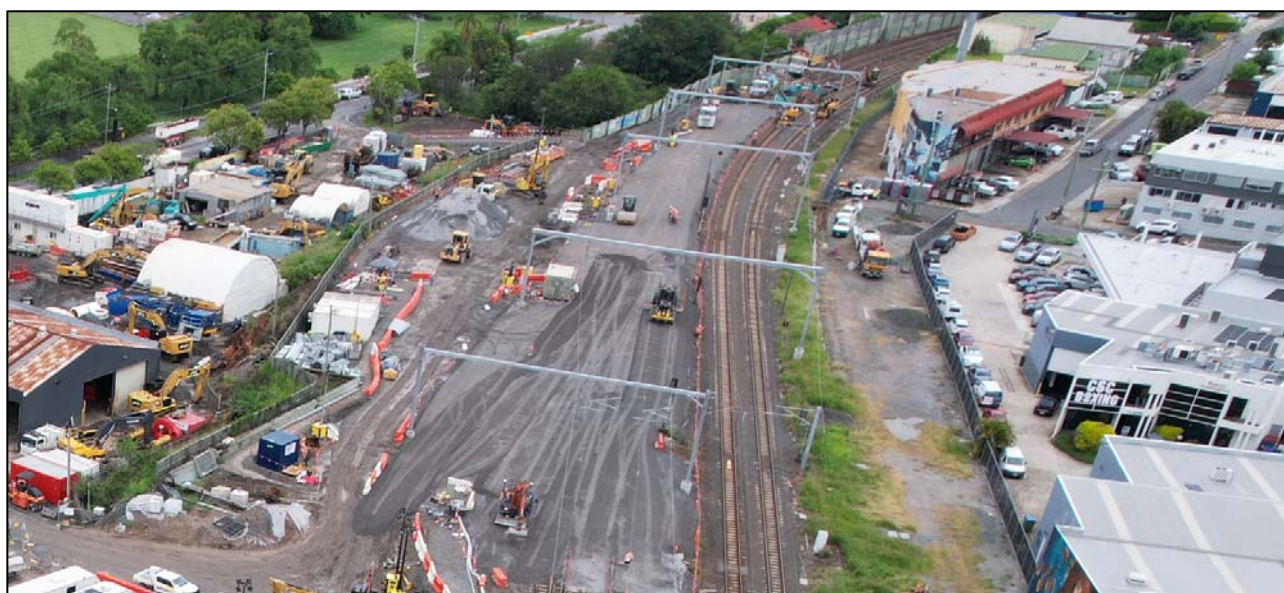
## Mayne Yard construction access points and work areas



## What to expect

During these works you may notice some intermittent disruptions such as:

- Light vehicles, trucks and machinery including excavators, augers, vacuum trucks, piling and drill rigs, concrete trucks, small power tools, minor vibrating equipment and mobile lighting towers to light the work areas at night
- Changes around your local area such as construction vehicles, traffic management signs and personnel
- Delivery trucks and workers' vehicles entering Mayne Yard North via the existing access road at Lanham Street and Mayne Road, Bowen Hills and via Grafton Street and Mill Street, Windsor
- Some increased levels of noise, vibration and dust associated with the use of heavy machinery and equipment
- Due to the construction of a new rail bridge, a section of Breakfast Creek near Grafton Street, Windsor has been temporarily closed to all boats / vessels until early 2024. The construction area boundaries will be marked with buoys on the water within Breakfast Creek.



January 2024 – Formation preparation for new track construction at Albion junction.