

Work Notice

February & March 2024

Albert Street station construction update

Over the new year, perimeter wall construction below ground has been completed at the main station entrance site (Lot 1). The focus has shifted to the jump form system which is used to construct internal and external walls of the station as it approaches ground level.

Underground in the Albert Street cavern (Lot 2), platform culvert installation is complete, cavern fit-out is ongoing, and large concrete pours continue to create a raised track slab either side of the platform.

At the northern station entrance site (Lot 3), above ground construction of walls continues, and the installation of permanent structural steel has commenced, with the roof and canopy installation to follow. Below ground, ongoing fit-out continues including mechanical and electrical services and blockwork.

Lot 1 – Main station entrance site (corner of Mary and Albert streets)



- Large concrete pours (requiring night and early morning work) involving concrete trucks and pumps parked on Mary Street, and Albert Street near Charlotte Street. This may require partial lane closures and temporary stop-and-go traffic arrangements.
- Concrete preparation using high pressure water (green cutting).
- Heavy plant movement (during the day and at night) including cranes, transport and delivery of materials, equipment and machinery.
- Cutting and fixing steel reinforcement bars and mesh.
- Formwork installation and alterations for jumpform construction.
- Underground station building fit-out including block work, and mechanical and electrical service installation.
- Site facility adjustments and partial gantry changes on Mary Street near Albert Street
- Station utility and civil earthworks works along Mary Street will require temporary pedestrian and traffic changes, and excavation and demolition work.



Image (above): The jump form system in operation constructing the internal and external walls.

From January 2024 until March 2024, some footpath and lane closures will take place on Mary Street near Albert Street to complete critical utility works. Further information will be provided regarding these works.

Lot 2 – Activities within the acoustic shed and in the underground cavern



- Installing formwork, steel fixing reinforcement bars and mesh, and concrete pouring activities.
- Large concrete pours to create a platform topping slab and elevated track slabs either side of the platform.
- Delivery and installation of structural steel, rail sleepers and rail tracks.
- Mechanical and electrical fit-out beneath platform culverts and on the cavern ceiling ahead of delivery and installation of escalators and platform screen doors.
- Back of house and mezzanine fit-out including installing block work, cable trays, heating, ventilation and air conditioning (HVAC) systems.
- Delivery and transport of materials, equipment, and machinery.

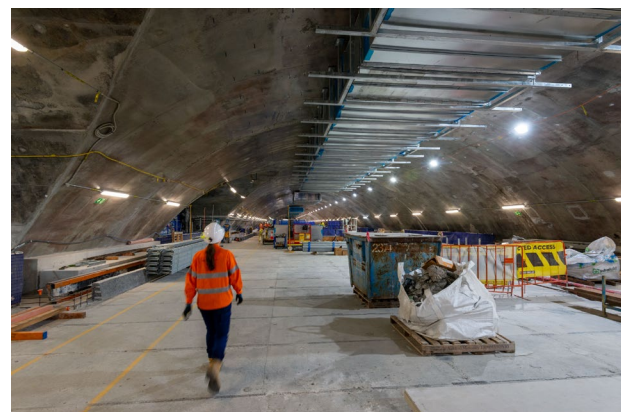


Image (right): Mechanical and electrical fit out ongoing inside the station cavern.

- Large concrete pours (requiring night and early morning work) involving concrete trucks and pumps parked on Albert Street near Charlotte and Elizabeth Streets.
- Concrete preparation using high pressure water (green cutting).
- Installing formwork, cutting and fixing steel reinforcement bars, scaffolding and concrete pours above ground.
- Installing steel posts and assembling shutters above ground.
- Jumpform construction to construct perimeter and internal building walls above ground.
- Delivery and installation of precast concrete walls and permanent structural steel columns to support the outer walls and station canopy.
- Site surface earthworks including hydraulic hammer excavation works.
- Demolition work at the back of Lot 3 worksite.
- Site facility adjustments including partial gantry changes.
- Mechanical and electrical service installation and fit-out including block work, door frame installation and lift installation.
- Heavy plant movement (during the day and at night) including cranes, transport and delivery of materials, equipment and machinery. This may require temporary pedestrian closures.

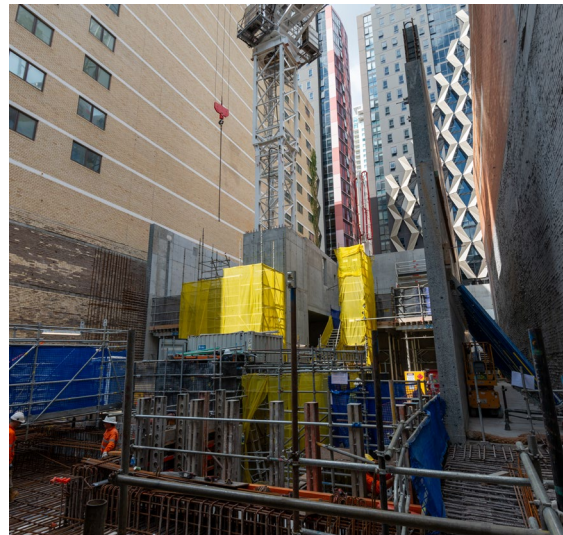


Image (above): Internal and exterior walls progress above ground.

Local streets – Albert Street between Alice and Queen streets: Elizabeth, Charlotte and Mary streets



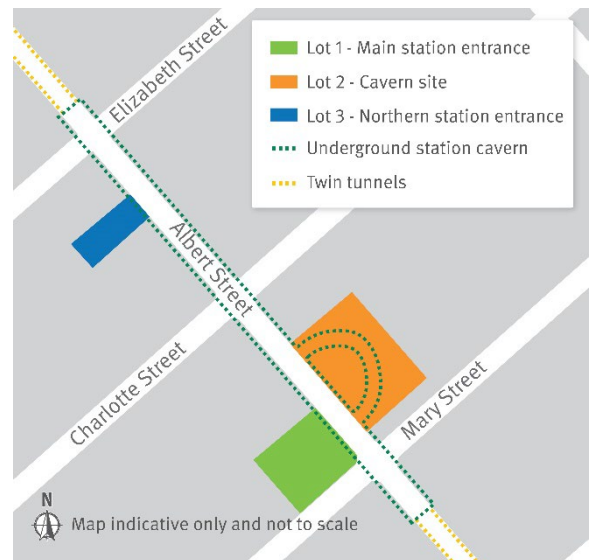
- Installing, maintaining and removing monitoring equipment and services.
- Utility, borehole and geotechnical locating, investigations and maintenance.
- Vegetation maintenance.
- Permanent service and utility connections.
- Manhole relining.
- Sewer maintenance (CCTV).

What to expect

During construction of the new station buildings and underground platform, there will be an increase in workforce and vehicles at the three Albert Street sites for the transport of materials, equipment and machinery.

Nearby residents and businesses may also experience an increase in dust, noise and vibration.

For your safety, intermittent temporary pedestrian and traffic holds and diversions will be in place near the worksites during concrete pours and other deliveries to the sites. Please follow all directions of traffic controllers.



Albert Street station design

The first CBD train station built in more than 120 years, Albert Street station will dramatically improve connectivity to the southern part of the CBD.



Scan here for more information about the design of the Albert Street station.

Construction hours



Standard construction: 6:30am – 6:30pm
Monday to Saturday.



Out of hours, 6:30pm – 6:30am
Some activities will be completed out of normal construction hours due to traffic permits, safety requirements and construction methodology. Register for weekly email updates. See right.



Underground and support activities
24 hours a day, 7 days per week.

☎ 1800 010 875

✉ crossriverrail@cbgujv.com.au

🌐 crossriverrail.qld.gov.au



If you need an interpreter to assist you in understanding this document, please call the Translating and Interpreting Service (TIS National) on 131 450 and request to be transferred to Multicultural Affairs Queensland on 13 QGOV (13 74 68).

