

Works Notice

February 2024

Construction update Yeerongpilly station

During February 2024, installation of services including undertrack crossings, station earthworks, structural steel installation, drainage and signalling works will continue.

Details of work

The following activities are scheduled to occur between 6:30am and 6:30pm, Monday to Saturday during February 2024, weather and construction conditions permitting:

- Continue removal of material including the use of rock breakers and jackhammers, general earthworks and minor vegetation removal
- Identification and disconnection of services, installation of new station services, cable service relocation works within the rail corridor, installation of drainage and under bore drilling (Ortive Street) for service relocations
- Platform and station building construction including earthworks, concrete pours and installation of structural steel
- Energex electrical cutover work to relocate electricity supply. Please note that the Yeerongpilly pedestrian overpass lifts will be unavailable 7:00am-5:00pm during this work
- Commence the Wilkie Street station entry works including the installation of in ground services (e.g., electrical), and station entry canopy footings. Please note that access to the pedestrian overpass lift will be temporarily unavailable during this work. Further notification will be issued prior to lift service disruption.

Out of hours work

The following activities will occur outside the project's normal working hours, weather and construction conditions permitting as outlined below:

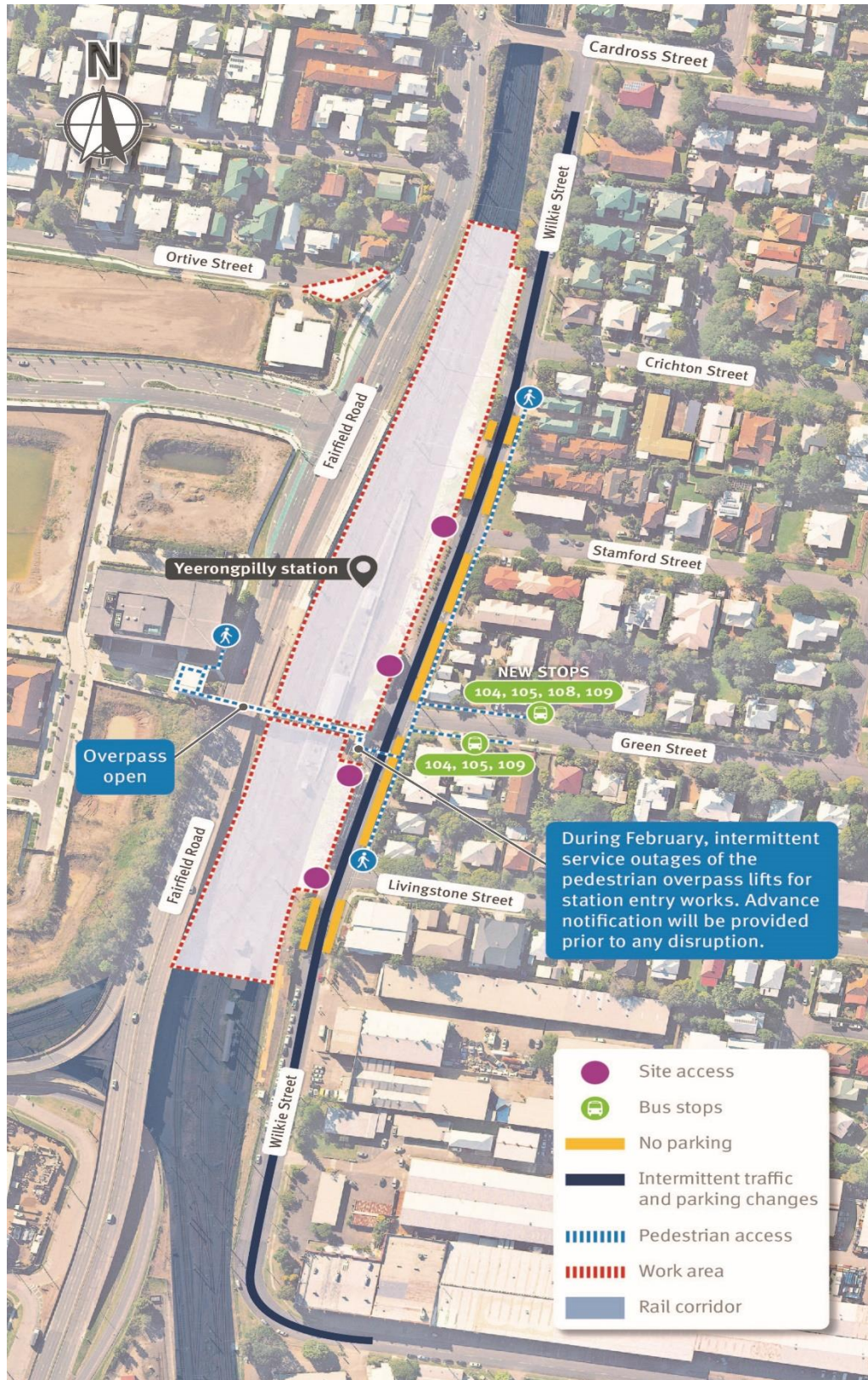
Location	Date and hours of work	Type of work
Yeerongpilly station	Intermittently between 6:30pm and 6:30am during February 2024	<ul style="list-style-type: none">• Delivery of rail and materials to the rail corridor via Wilkie Street• In ground services (e.g., electrical), cable service route and drainage installation works including excavation using excavators and vacuum trucks• General earthworks and bored piling for foundation works• Formwork, steel fixing and pumping concrete into the rail corridor for station platform construction.
	Between 2:00am Saturday 24 and 3:00am Monday 26 February 2024	<ul style="list-style-type: none">• Cable service route installation including excavation, and installation of under track crossings for services (e.g., water, electrical)• Installation of overhead electrical wire foundations and masts• Structural steel installation• Installation of pre-cast concrete platform retaining walls• Drainage installation works including excavation• Track construction and maintenance.

What to expect

During these works you may notice some disruptions such as:

- Traffic and parking changes on Wilkie Street between Cardross Street and Station Road. Access will be maintained to properties located within the road closure extents under traffic control guidance
- Light vehicles, trucks and machinery including excavators with rock breakers and jackhammers, mobile cranes, trucks, vacuum trucks, concrete trucks, pump trucks, loaders, concrete saws, power tools, generators, and mobile lighting towers to light work areas at night
- Changes around your local area such as construction vehicles, heavy equipment, traffic management signs and personnel
- Noise, vibration and dust associated with the use of heavy machinery and equipment.

Yeerongpilly station construction area, traffic impacts and pedestrian access



If you would like to speak with a member of the UNITY Alliance Project Team about these planned works, please contact 1800 010 875 or email info@unityalliance.com.au anytime for more personalised consultation.

We appreciate your patience during construction and will continue to update you as work progresses.

☎ 1800 010 875

✉ info@unityalliance.com.au

🌐 crossriverrail.qld.gov.au



If you need an interpreter to assist you in understanding this document, please call the Translating and Interpreting Service (TIS National) on 131 450 and request to be transferred to Multicultural Affairs Queensland on 13 QGOV (13 74 68)

