

Works Notice

February 2024

Rocklea station construction

During February 2024, UNITY Alliance will continue service relocation works, overpass and station building fit out, drainage works, retaining walls and platform construction.

Details of work

The following activities are scheduled to occur between 6:30am and 6:30pm, Monday to Saturday during February 2024, weather and construction conditions permitting:

- Continue construction of inground services including excavation for drainage
- Continue construction of the commuter carpark and station entry including formwork and concreting
- Continue installation of station canopy steel, roofing and fit out
- Continue fit out of the new pedestrian overpass and lifts including electrical, lighting and flooring
- Continue installation of building services and fit out.

The following activities will occur outside the project's normal working hours, as outlined below:

Location	Date and hours of work	Type of work
Rocklea station	Intermittently between 6:30pm and 6:30am during February 2024	<ul style="list-style-type: none">• Delivering materials and equipment onto station platforms and removal of materials from site• Station platform and building concrete pours, including dewatering using vacuum trucks when required• Station canopy construction including welding and grinding.
Rocklea station and rail corridor	Between 2:00am Saturday 24 to 3:00am Monday 26 February 2024	<ul style="list-style-type: none">• Installation of structural steel for station buildings and canopies• Installation of overhead electrical wire foundations and masts• Cable service route installation including excavation (and drilling), and installation of under track crossings for services (e.g., water, electrical)• Platform construction including installation of coping edge (tiles) and tactiles, buildings fit out and installation of services (e.g., water, electrical).

What to expect

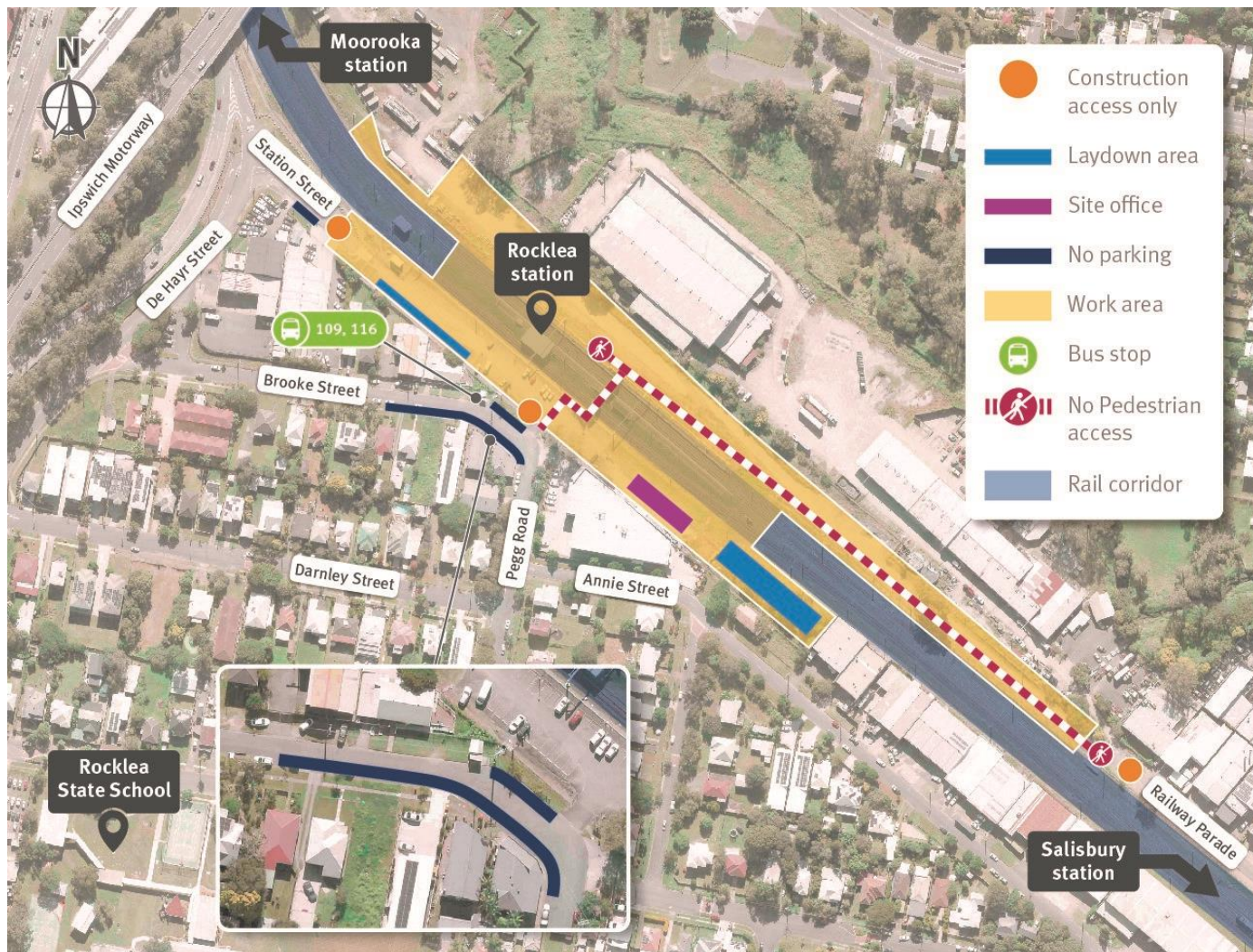
During these works you may notice some intermittent disruptions such as:

- Trucks and machinery including loaders, excavators with rock breakers, vacuum trucks, concrete trucks, pump trucks, mobile cranes, saws, small power tools, minor vibrating equipment, and mobile lighting towers to light work areas at night
- Changes around your local areas such as construction vehicles, traffic management signs and personnel
- Increased noise, vibration and dust associated with the use of heavy machinery and equipment.

Cross River Rail won't just transform Brisbane, it will transform the way we travel across South East Queensland. But building Cross River Rail means changes to travel and transport services during construction. Plan your journey by downloading the MyTranslink app, visit translink.com.au or call 13 12 30.

We appreciate your patience during construction and will continue to update you as work progresses.

Work areas and construction access points at Rocklea station



Work at Rocklea station is progressing well with fit out of the station overpass and lifts, station buildings and canopies continuing.

☎ 1800 010 875

✉ info@unityalliance.com.au

🌐 crossriverrail.qld.gov.au



If you need an interpreter to assist you in understanding this document, please call the Translating and Interpreting Service (TIS National) on 131 450 and request to be transferred to Multicultural Affairs Queensland on 13 QGOV (13 74 68)

