

# Works Notice

December 2023 / January 2024

## Boggo Road and Southern Area - construction update

Throughout December 2023 and January 2024, work on the Boggo Road pedestrian and cycle bridge will continue with the pouring of the bridge deck topping slab, and installation of privacy screens.

At the new Boggo Road station, construction has reached ground level at the southern end of the worksite. Other activities at the station includes installation of steel, concrete and precast concrete segments.

### Pedestrian and cycle bridge update

Over the coming months, out of hours work will continue to install the final bridge girder, construct the connecting ramps and deliver and install posts and privacy screens. Delivery and construction of the pedestrian elevators will occur in 2024.

### Boggo Road station update

Throughout December 2023 and January 2024, construction of the Boggo Road station continues as the structure reaches ground level. Mechanical and electrical fit-out is ongoing at the southern end of the Boggo Road station.

Preparatory works for the installation of rail will continue along with the fit out of the utilities rooms.

Key works on the platform will include the installation of screen doors and the delivery of escalators in the new year.

### Southern Portal update

Permanent lining of the tunnel portal is nearing completion with mechanical and electrical (M&E), and track fit out works continuing over the coming months.

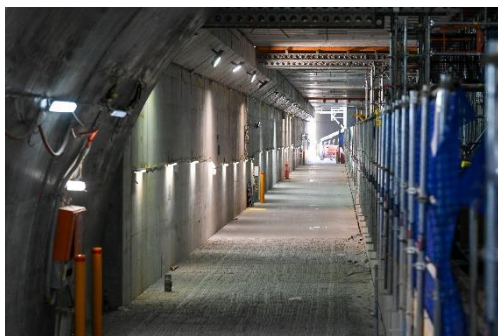


Image: Mass infill prior to track slab install at the Boggo Road station

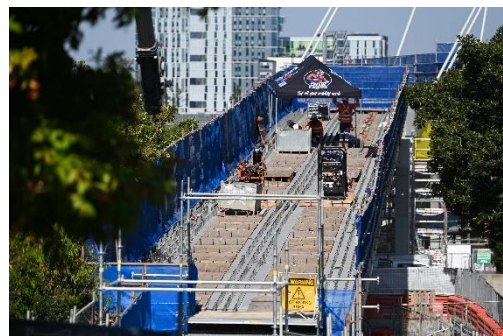


Image: View of Pedestrian and Cycle bridge western ramp from Peter Doherty Street, Dutton Park

#### Extended rail closures

There will be track closures across the rail network from Saturday 23 December to Thursday 18 January 2024 due to major Cross River Rail works.

During the closure, there will be plenty of alternative transport options available. Ensure you allow extra travel time and plan your journey in advance by downloading the MyTranslink app, visiting [translink.com.au](https://translink.com.au) or calling 13 12 30.

## Boggo Road construction

### Boggo Road

<b>Ongoing</b>	<ul style="list-style-type: none"><li>• Ongoing steel installation within the station box.</li></ul>
<b>Day and night work</b>	<ul style="list-style-type: none"><li>• Concrete pours scheduled overnight or in the early hours of the morning.</li><li>• Use of cranes and other large machinery.</li><li>• Delivery and installation of precast concrete segments during the day and at night.</li><li>• Ongoing mechanical and electrical fit out work.</li><li>• Excavation and construction of retaining wall construction adjacent to busway.</li><li>• Delivery of equipment and materials via Boggo Road, Joe Baker Street and Peter Doherty Street.</li></ul>

## Southern Portal construction

### Kent Street

<b>Ongoing</b>	<ul style="list-style-type: none"><li>• Use of cranes and other large machinery.</li></ul>
<b>Day and night work</b>	<ul style="list-style-type: none"><li>• Finishing works on installed rail infrastructure within the rail corridor.</li><li>• Mechanical and electrical works.</li><li>• Delivery of steel rail and precast concrete components for track construction.</li><li>• Completion works to portal construction.</li></ul>

## Pedestrian and cycle bridge construction

### Peter Doherty to Kent Street

<b>Ongoing</b>	<ul style="list-style-type: none"><li>• Pedestrian and cycling bridge deck work.</li></ul>
<b>Day and night work</b>	<ul style="list-style-type: none"><li>• Out-of-hours concrete pours.</li><li>• Delivery and installation of materials at night.</li></ul>

### General construction hours:

- Boggo Road station construction hours are 24 hours Monday to Friday and 6.30am to 6.30pm on Saturdays unless advised.
- Southern Tunnel Portal and pedestrian and cycle bridge construction is undertaken 24 hours, seven days a week. This includes work during weekend rail corridor closures.

### What to expect during construction:

- Increased levels of noise, dust and vibration
- Construction vehicles travelling to and from the worksite via Boggo Road, Joe Baker Street and Peter Doherty Street, Rawnsley Street, Railway Terrace, Dutton Street and Kent Street
- Delivery of materials and equipment to the worksite at night
- Extended concrete pours scheduled to start early in the morning
- Temporary closures of local streets including Kent, Joe Baker and Peter Doherty streets
- Potential short-term disruption to utility services. Additional notification will be provided if impacts are expected.