

Work Notice

December 2023 / January 2024

Albert Street station construction update

Track slab and platform construction is ongoing at the Albert Street underground cavern (Lot 2).

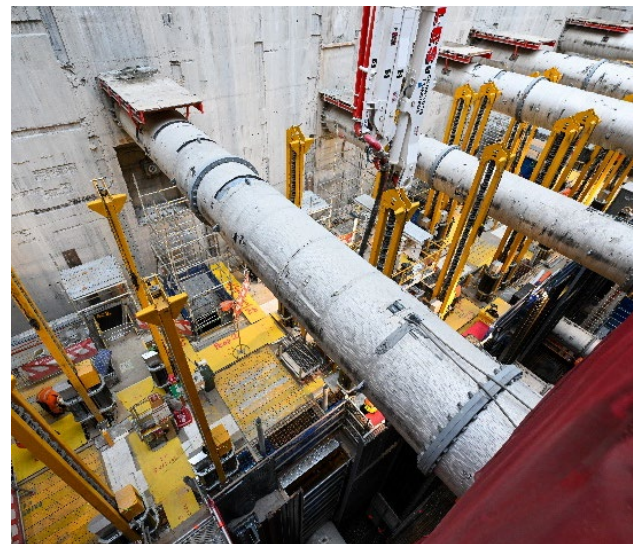
Above ground at the northern station entrance site (Lot 3), the reinforced concrete structure has commenced above ground construction and will support the canopy that will overhang the station entrance.

Construction of the perimeter walls will soon be completed at the main station entrance site (Lot 1). The slipform system used to create these walls will then be removed from site when finished.

Lot 1 – Main station entrance site (corner of Mary and Albert streets)



- Large concrete pours (requiring night work and early mornings) involving concrete trucks and pumps parked on Mary Street, and Albert Street near Charlotte Street.
- Concrete preparation using high water pressure (green cutting).
- Cutting and fixing steel reinforcement bars and mesh.
- Formwork installation and alterations for slab and jump form construction.
- Transport of materials, equipment, and machinery.
- Disassembly of slip form system including removal of slip form guide beam and anchors.
- Underground station fit-out including blockwork and services installation.
- Site facility adjustments and partial gantry changes.
- Excavation and demolition works along Mary Street.
- Station utility works along Mary Street, survey and geotechnical work including potholing. These works may require pedestrian and traffic changes.



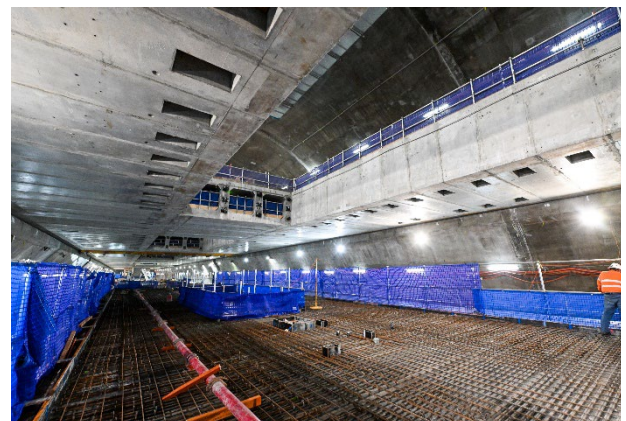
Caption (above): The jump form system in operation constructing the internal and external walls.

Between December 2023 and January 2024, some footpath, lane and road closures may be required on Mary Street near Albert Street to complete critical utility works. Further notification will be provided. We encourage you to please register for project updates by emailing crossriverrail@cbqujv.com.au to stay up to date.

Lot 2 – Activities within the acoustic shed and in the underground cavern



- Installing formwork, steel fixing and concreting activities underground.
- Service adjustments within the tunnel.
- Transport of materials, equipment and machinery.
- Back of house fit-out including installing blockwork.
- Delivery and installation of platform culverts.
- Delivery and installation of escalators and platform screen doors.
- Concrete slab pours in the station box in preparation for installation of rail in 2024.



Caption (right): Reinforcement work continuing to construct the station platform.

- Large concrete pours (requiring night work and early mornings) involving concrete trucks and pumps parked on Albert Street near Charlotte and Elizabeth streets.
- Installing scaffold.
- Jump form operations to construct the building.
- Installing steel posts and assembling shutters above ground construction.
- Cutting and fixing steel reinforcement bars and mesh.
- Precast concrete panel installation to support the outer walls and future canopy.
- Steel installation to form the roof structure in preparation for canopy work.
- Transport of materials, equipment, and machinery.
- Site surface earthworks, including hydraulic hammer excavation works.
- Site facility adjustments including partial gantry changes.



Caption (right): Steel reinforcement activities ongoing to create the internal walls of the station.

Local streets – Albert Street between Alice and Queen streets: Elizabeth, Charlotte and Mary streets



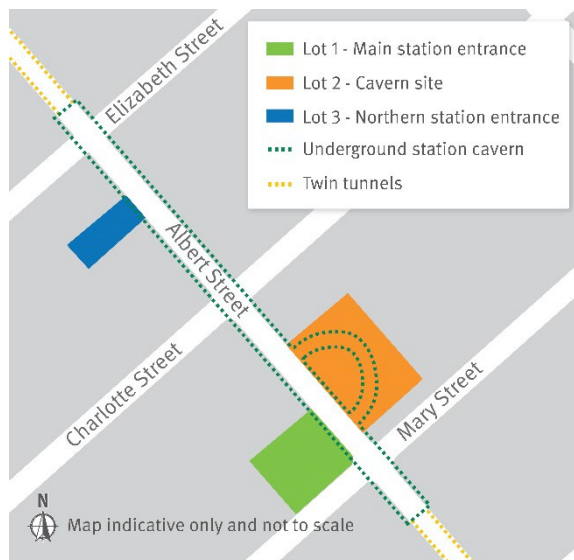
- Installing, maintaining and removing monitoring equipment and services.
- Utility, borehole and geotechnical investigations and maintenance.
- Vegetation maintenance.
- Permanent service and utility connections.
- Manhole relining.
- Sewer maintenance (CCTV).

What to expect

During construction of the new station buildings and underground platform, there will be an increase in workforce and vehicles at the three Albert Street sites for the transport of materials, equipment and machinery.

Nearby residents and businesses may also experience an increase in dust, noise and vibration.

For your safety, intermittent temporary pedestrian and traffic holds and diversions will be in place near the worksites during concrete pours and other deliveries to the sites. Please follow all directions of traffic controllers.



Construction hours



Standard construction: 6:30am – 6:30pm
Monday to Saturday.



Out of hours, 6:30pm – 6:30am
Some activities will be completed out of normal construction hours due to traffic permits, safety requirements and construction methodology. Register for weekly email updates. See right.



Underground and support activities
24 hours a day, 7 days per week.

Albert Street station design

The first CBD train station built in more than 120 years, Albert Street station will dramatically improve connectivity to the southern part of the CBD.



Scan the QR code above or [click here](#) for more information about the design of the Albert Street station.