

Cross River Rail Project European Train Control System (ETCS)

SIGNALLING FOR SEAMLESS AND SAFE TRAIN TRAVEL

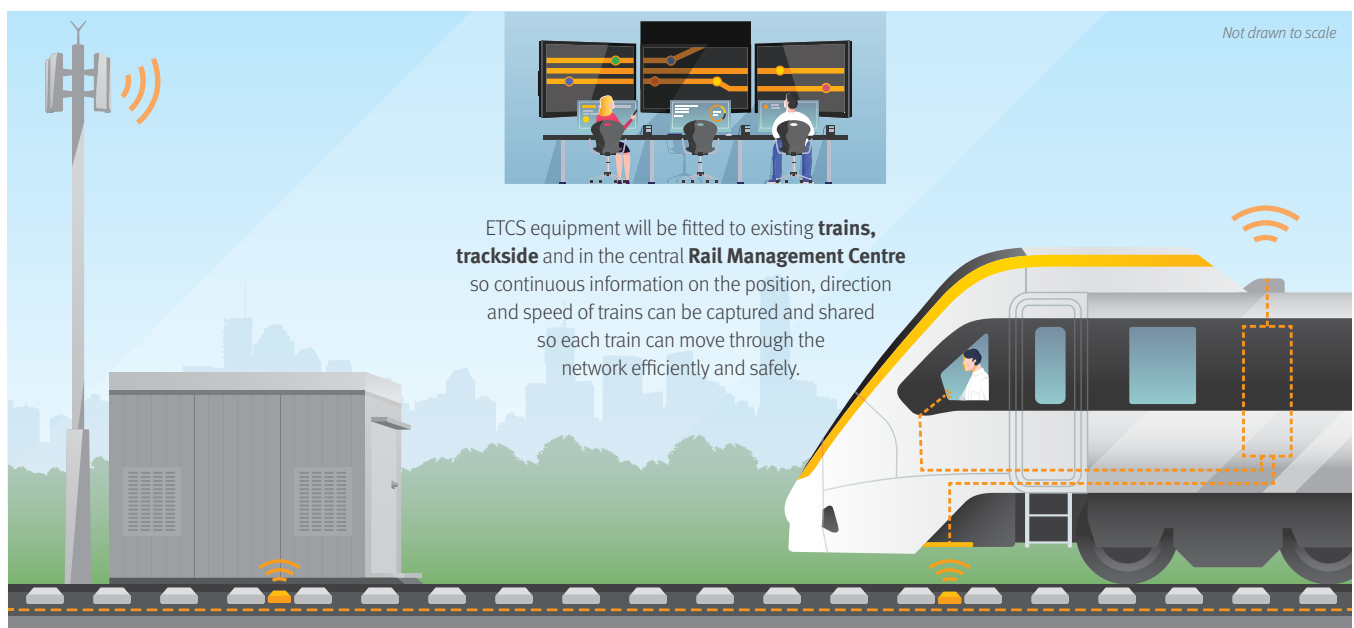
A world-class railway signalling system is being installed in South East Queensland as part of the Cross River Rail Project.

Already operating in cities around the world, the new railway signalling system will increase capacity, efficiency and reliability while maintaining safety on our rail network. It is especially important for the safe operation of trains in the Cross River Rail tunnels.

THE BENEFITS

- Smart signalling and rail traffic management
- Improved reliability and increased capacity
- Continued safety of services
- Safe tunnel and seamless train operations
- Safe trackside maintenance

How does it work?



ETCS is an advanced signalling system that relays continuous information between the central Rail Management Centre (RMC) and trains via a radio system, and between trackside equipment and the RMC through a fixed transmission network. Some additional data is transferred via fixed balises (or beacons) on the train tracks to the trains.

This information reports the position, direction and speed of each train and enables the system to calculate safe, maximum running speeds.

Knowing the exact position of each train along the network means they can be scheduled to travel closer to each other while maintaining the highest standards of safety.

What's involved?

ETCS will be rolled out in several stages starting with the Shorncliffe line where trains are operating in test mode on parts of the line.

All parts of the new signalling system will be progressively tested, including equipment installed on and alongside the track, onboard a test train and in the Rail Management Centre at Bowen Hills.

Following the Shorncliffe line construction and testing, ETCS will be progressively installed in other project areas and in the CRR tunnels which rely on its technology to safely operate.

The majority of work will be completed, and infrastructure installed within the rail corridor and on Queensland Rail property.

Every effort will be taken to ensure all work is carried out safely, and managed to minimise disruption to commuters and surrounding residents and businesses. All activities will be undertaken in accordance with relevant regulations.



About Cross River Rail

Cross River Rail is a new 10.2km rail line that includes 5.9km of twin tunnels running under the Brisbane River and CBD; with four new underground stations at Boggo Road, Woolloongabba, Albert Street and Roma Street.

The project will also deliver a new above-ground station at Exhibition, a rebuild for seven stations between Dutton Park and Salisbury; construction of three new stations on the Gold Coast; construction of two new train stabling facilities and installation of a new world-class signalling system.

Cross River Rail will transform the way we travel across the whole of South East Queensland. Journeys will be quicker there will be new stations in more convenient locations, there will be capacity to increase train services as our population grows and public transport will become a more viable option for the whole of our region, helping to ease congestion on our roads.

Subscribe to receive updates

To learn more about ETCS, visit crossriverrail.qld.gov.au/about/rail-network-improvements.

Be sure to also keep up to date with work in your area by subscribing to electronic updates by selecting ETCS.