

Works Notice

December 2023 – January 2024

Exhibition station construction update

During October and November 2023, UNITY Alliance continued the installation of structural steel and shade canopies for the new Exhibition station platform. During December 2023 and January 2024, these works will continue along with construction of station retaining walls and a new railway bridge behind the John MacDonald Stand.

Details of work

The following activities are scheduled to occur between 6:30am and 6:30pm, Monday to Saturday during December 2023 and January 2024, weather and construction conditions permitting:

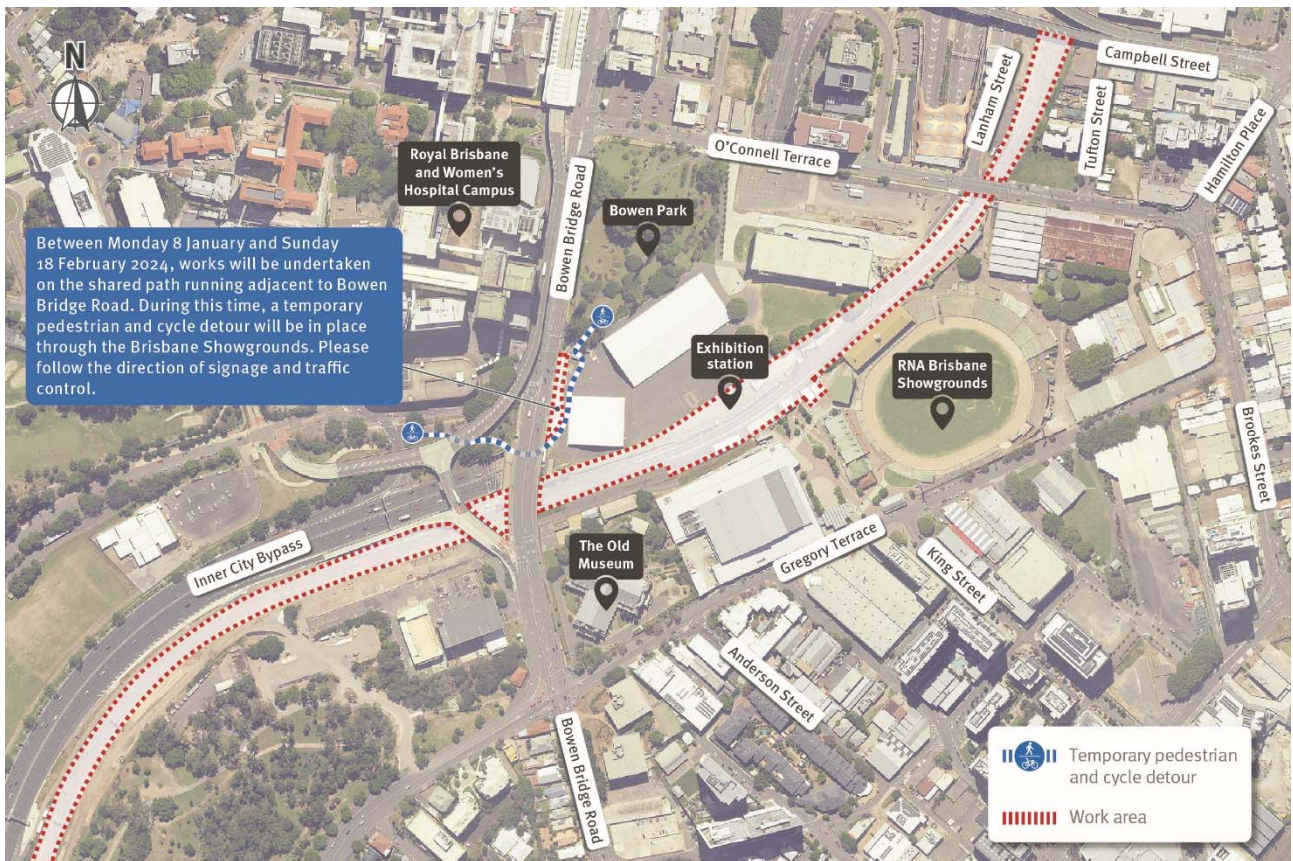
- To improve accessibility, a section of shared path leading to Bowen Park adjacent to Bowen Bridge Road will be regraded in January 2024. During this time pedestrians and cyclists will be detoured through the Brisbane Showgrounds. Please refer to the map on the back page for further details.
- Demolition and removal of redundant structures within the rail corridor
- Installation of mast foundations and structures for overhead electrical lines and cable routes and pits within the rail corridor between Campbell Street and south of Bowen Bridge Road
- Rock excavation within the rail corridor between Campbell Street and Bowen Bridge Road
- Station drainage and underground utility installation
- Installation of structural steel, concrete for new station platforms and fit out of station canopy
- Construction of station retaining walls and new railway bridge
- Track work and maintenance.

Out of hours work

Additional activities will occur outside the project's normal working hours, as outlined below:

Location	Date and hours of work	Type of work
Spring Hill and Bowen Hills	Night shift	
	Intermittently between 6:30pm and 6:30am throughout December 2023 and January 2024	<ul style="list-style-type: none"> • Concrete deliveries and pours • Installation of cable routes and pits within the rail corridor including pulling new cables in conduits • Minor earthworks and rock excavation to support signalling and service installation • Installation of structural steel and concrete pours for new station bridges and platforms • Installation of new platform canopies • Station fit out and service installation • Track work and maintenance.
	Between 9:30am Monday 11 December to 2:00am Monday 18 December 2023	
	Between 2:00am Sunday 24 December 2023 to Sunday 21 January 2024	<ul style="list-style-type: none"> • Rock excavation and earthworks between Campbell Street, Bowen Hills and Victoria Park, Spring Hill • Installation of overhead electrical structures, mast foundations, signalling equipment, cable routes and pits within the rail corridor • Installation of structural steel and concrete pours for new station bridges and platforms • Earthworks and installation of drainage • Track work and maintenance.

Work area Exhibition station precinct in December 2023 and January 2024



What to expect

During these works you may notice some intermittent disruptions such as:

- Use of large machinery such as excavators with hydraulic hammers to remove rock, cranes and concrete pumps for concrete structures between Campbell Street and Bowen Bridge Road and loading material into trucks for transport
- Changes around your local area such as construction vehicles, traffic management signs and personnel
- Increased levels of noise, vibration and dust associated with the use of heavy machinery and equipment
- Access into the rail corridor will be via the Victoria Park access road, Bowen Bridge Road, Lanham Street and O'Connell Terrace via the Brisbane Showgrounds.

If you would like to speak with a member of the UNITY Alliance Project Team about these planned works, please contact 1800 010 875 or email info@unityalliance.com.au anytime for more personalised consultation.

Cross River Rail won't just transform Brisbane, it will transform the way we travel across South East Queensland. But building Cross River Rail means changes to travel and transport services during construction. Plan your journey by downloading the MyTranslink app, visit translink.com.au or call 13 12 30.

We appreciate your patience during construction and will continue to update you as work progresses.