

Works Notice

December 2023 – January 2024

Construction update Mayne Yard

In December 2023 and January 2024, works will continue in the Mayne Yard stabling facility including earthworks, track modifications, removal of redundant structures, installation of foundations and new masts for overhead electrical wires.

Details of work

During December 2023 and January 2024, the following activities are scheduled to occur between 6:30am and 6:30pm, Monday to Saturday, weather and construction conditions permitting:

- Continue installation of inground services within Mayne Yard East
- Earthworks for track raising north of the new rail bridge over Breakfast Creek
- Commissioning of a new internal Queensland Rail pedestrian overpass within Mayne Yard East
- Commence installation of fencing within Mayne Yard East
- Continue construction of the new rail bridge over Breakfast Creek
- Continue earthworks to construct new road and rail formation
- Installation of foundations and masts for overhead electrical wires
- Ongoing installation of cable routes and pits within the rail corridor
- Decommissioning of redundant track, track reconstruction and maintenance.

Out of hours work

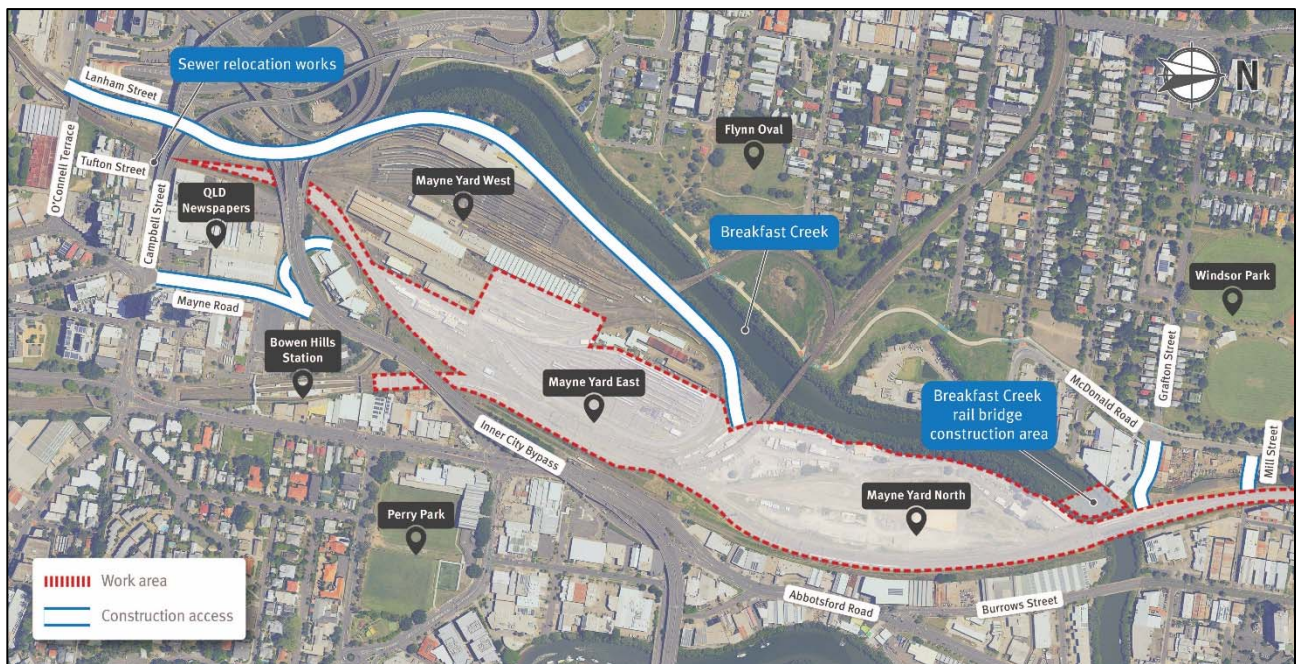
Additional activities will occur outside the project's normal working hours, as outlined below:

| Location | Date and hours of work | Type of work |
|-------------------------|--|--|
| Mayne Yard, Bowen Hills | Intermittently between 6:30pm and 6:30am throughout December 2023 and January 2024 | <ul style="list-style-type: none"> • Concrete works including placement of formwork, steel fixing and concrete pours • Delivery of materials to site • Installation of conduits and pulling new cables • Track work and maintenance. |
| | <p>Between 9:30am Monday 11 December to 2:00am Monday 18 December 2023</p> <p>Between 2:00am Sunday 24 December 2023 to Sunday 21 January 2024</p> | <ul style="list-style-type: none"> • Earthworks for track raising north of the new rail bridge over Breakfast Creek • Installation of overhead electrical structures, signalling equipment, cable routes and pits within the rail corridor • Decommissioning of redundant tracks and services • Breakfast Creek rail bridge construction • Test pitting and service location works • Track work and maintenance. |

Cross River Rail will transform the way we travel to, from, and through Brisbane in the future. But right now, construction means disruption to train services. Sign up to receive updates at our website and use Translink's journey planner at translink.com.au, call 13 12 30 or download the MyTranslink app to plan your journey.

We appreciate your patience during construction and will continue to update you as work progresses.

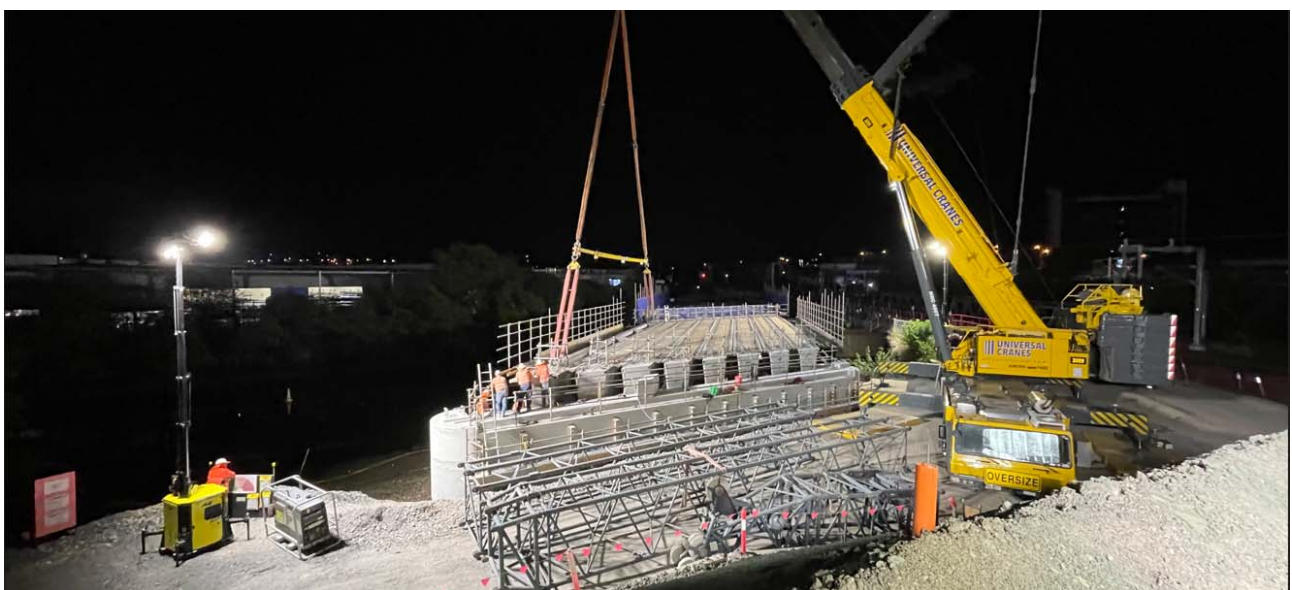
Mayne Yard construction access points and work areas



What to expect

During these works you may notice some intermittent disruptions such as:

- Light vehicles, trucks and machinery including excavators, augers, vacuum trucks, piling and drill rigs, concrete trucks, small power tools, minor vibrating equipment and mobile lighting towers to light the work areas at night
- Changes around your local area such as construction vehicles, traffic management signs and personnel
- Delivery trucks and workers' vehicles entering Mayne Yard North via the existing access road at Lanham Street and Mayne Road, Bowen Hills and via Grafton Street and Mill Street, Windsor
- Some increased levels of noise, vibration and dust associated with the use of heavy machinery and equipment
- Due to the construction of a new rail bridge, a section of Breakfast Creek near Grafton Street, Windsor has been temporarily closed to all boats / vessels until early 2024. The construction area boundaries will be marked with buoys on the water within Breakfast Creek.



October 2023 – Second span of the new rail bridge over Breakfast Creek has now been installed.