

# Works Notice

November 2023

## Roma Street station Subway and Bus Platform Upgrades

Work is taking place to upgrade the architectural finishes within the station subway and on busway platform 2 to complement the new underground Roma Street station.

The following activities are scheduled to occur during November 2023, weather and construction conditions permitting.

### Details of work

#### Platform 2

In October, work started on busway platform 2 to upgrade architectural finishes. Temporary changes to the customer waiting area will be in place until mid-November 2023. Signage will be in place to direct customers.

The following activities will be undertaken:

- removal of existing platform finishes with the use of jackhammers and floor grinders
- saw cutting to remove and reconstruct platform columns
- installation of the ceiling to the existing platform canopy
- installation of platform tiles
- installation of electrical components such as power and lighting.

Construction will generally be undertaken from 6am to 6pm Monday to Friday. Bus services will continue as normal during this time.

The following activities will occur outside the project's normal working hours, construction and weather conditions permitting:

#### *Saturday and Sunday, from 8am – until 6pm*

- installation of platform tiles
- removal of existing platform finishes with the use of jackhammers and floor grinders.

#### *Monday to Saturday, between 9pm – 6am*

- concreting activities via Countess Street busway
- deliveries of equipment including machinery and materials via Countess Street busway.

#### Station subway

INTREC Management is continuing with subway works between platforms 10 and 3, and on the southern side of platform 6 and 7 stairs. Signage is in place to assist customers.

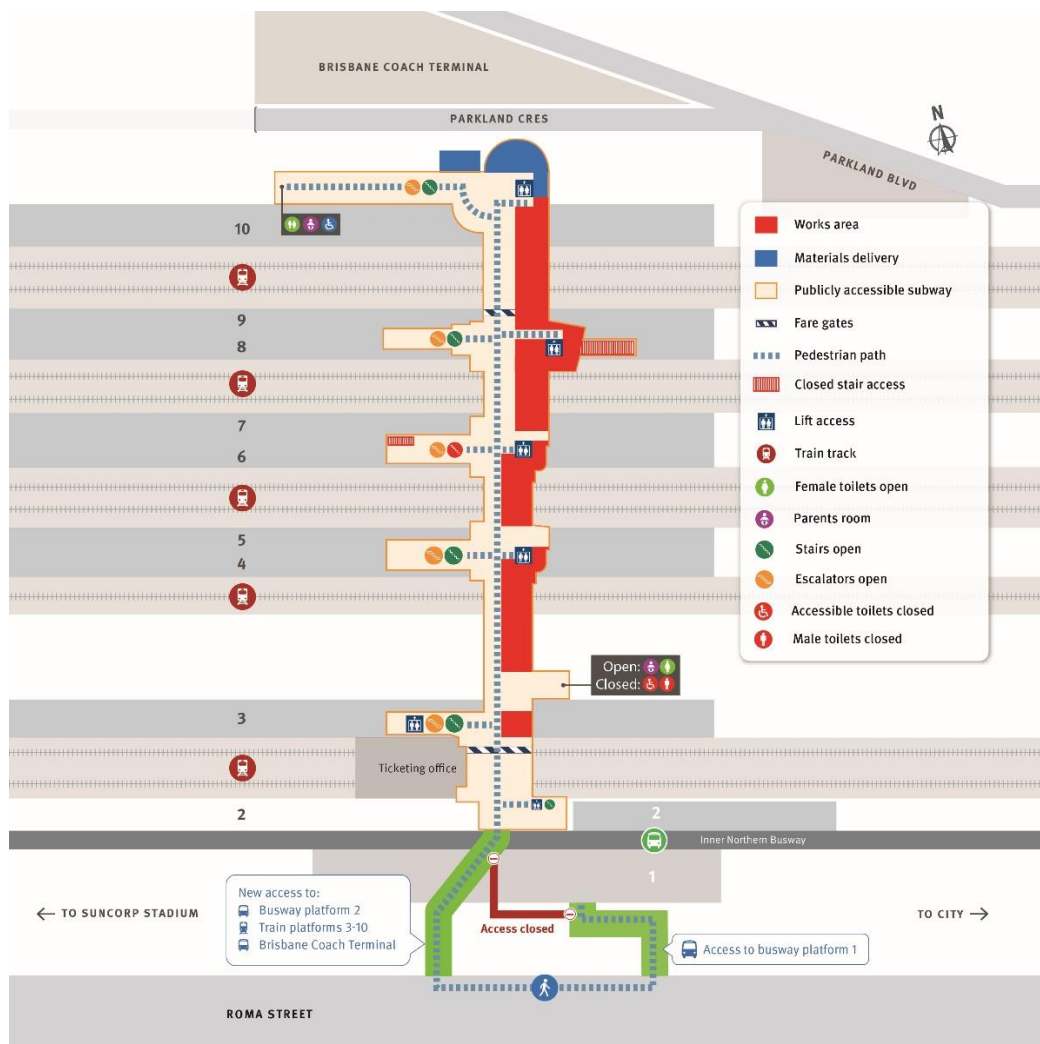
During this work, the toilets in this area will be temporarily closed for refurbishment. Alternative restrooms are available to customers on platform 10. Customers can access platform 10 via the stairs, escalator or lift.

The following activities will be undertaken within the station subway:

- installation of floor-to-ceiling hoarding around work areas
- removal of parts of the ceiling and station subway floor tiles with the use of jackhammers and floor grinders
- refurbishment of platform stairs with the use of jackhammers and floor grinders
- refurbishment of the toilets within the subway
- installation of new flooring, wall tiles and new ceiling panels
- lighting upgrades.

Works are scheduled to occur between 6:30am and 6:30pm, Monday to Sunday, construction conditions permitting.

Due to operational requirements of Roma Street station and Brisbane Coach Terminal, high impact out of hours work will be undertaken between 6pm and 5am Monday to Saturday and includes activities listed above. Residents in proximity may experience an increase in noise levels.



## What to expect

During these works, access to platforms, lifts and the subway will be maintained with temporary and intermittent changes to customer access. Customers and the local community may notice an increase in construction activities and workforce, which may generate increased levels of noise, dust and vibration. Mitigation measures will be in place, where possible, to reduce impacts.

There will be intermittent use of concrete saws, jackhammers, grinders, small power tools, minor vibrating equipment, generators, concrete pumps, vacuum trucks and mobile lighting towers to light work areas at night.

Materials and machinery for subway works will be delivered and removed from site between 11pm and 5am via Parkland Crescent. Vehicle access through Parkland Crescent will be maintained under the direction of traffic control.

We appreciate your patience during construction and will continue to update you as work progresses.

## Register to receive construction updates

The Cross River Rail Delivery Authority is committed to keeping stakeholders and the community informed about the project. If you have any questions or would like to find out more about the project, scan the QR code or contact the project team (see details below).



☎ 1800 010 875

✉ [info@crossriverrail.qld.gov.au](mailto:info@crossriverrail.qld.gov.au)

🌐 [crossriverrail.qld.gov.au](http://crossriverrail.qld.gov.au)



If you need an interpreter to assist you in understanding this document, please call the Translating and Interpreting Service (TIS National) on 131 450 and request to be transferred to Multicultural Affairs Queensland on 13 QGOV (13 74 68)

