

Works Notice

September 2023

Construction update Dutton Park station

During August 2023, UNITY Alliance continued construction of retaining wall structures, drainage and platform services at Dutton Park station. In September 2023, structural steel lifts will commence to install the columns required to support the stations new pedestrian overpass.

Details of work

The following activities are scheduled to occur between 6:30am and 6:30pm, Monday to Saturday during September 2023, weather and construction conditions permitting:

- Continue construction of a new retaining wall near Cope Street and the Annerley Road and Cornwall Street intersection
- Continue construction of platforms 1 and 2 including the installation of services and precast units
- Construction of a rail corridor maintenance access and noise barrier alterations at Fenton Street, Fairfield
- Continue construction of a noise barrier between Cope and Sampson streets
- Commence construction of the new station entrance on Noble Street including earthworks and service relocation
- Construction of a retaining walls along Kent Street including shotcrete and piling works.

Out of hours work

The following activities will occur outside the project's normal working hours, weather and construction conditions permitting:

Location	Date and hours of work	Type of work
Sampson Street, Cope Street and Annerley Road	Between 6:30pm and 6:30am throughout September 2023	<ul style="list-style-type: none"> • Out of hours concrete pours for construction of platforms 1 and 2 • Service identification using a vacuum truck around the station precinct • Track work and maintenance.
Between Ensign Avenue and Kent Street	<p>Between 2:00am Sunday 3 to 2:00am Monday 18 September 2023</p> <p>Between 12:00am Saturday 30 September to 3:00am Tuesday 3 October 2023</p>	<p>Day shift</p> <ul style="list-style-type: none"> • Piling for retaining wall construction near Kent Street including concrete deliveries and pours • Cope Street drainage and earthworks. <p>Day and night shift</p> <ul style="list-style-type: none"> • Platform 1 and 2 construction and crane lifts, including pre-cast concrete panels and structural steel lifts • Installation of overhead electrical structures, signalling equipment, cable routes and pits within the rail corridor • Cable service route installation in proximity to Kent Street, Fenton Street and Ensign Avenue • Earthworks to support signalling installation and under track crossings • Rail deliveries, track work and maintenance. <p>See traffic changes on map over the page associated with these works.</p>

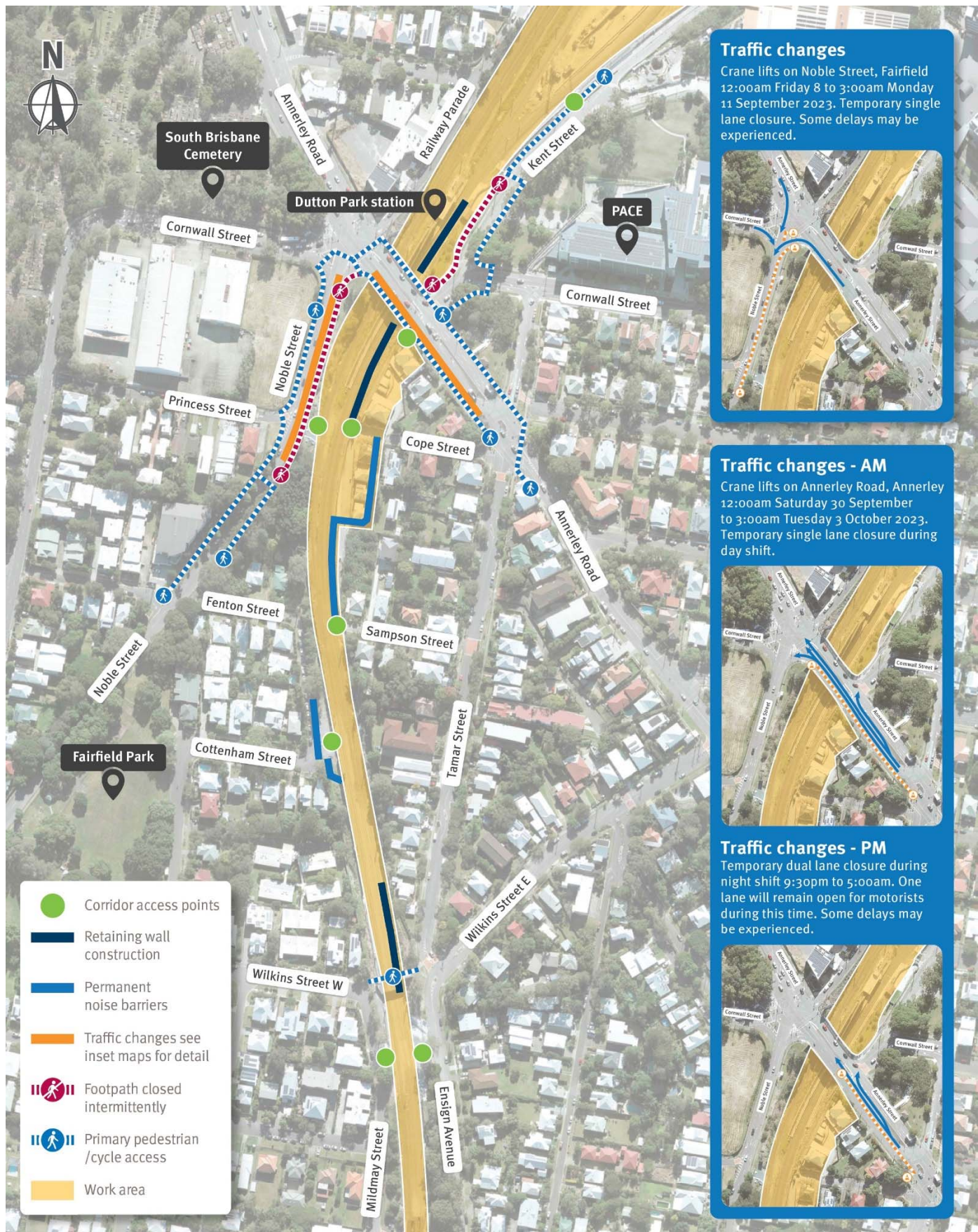
What to expect

During these works you will notice some disruptions such as:

- Access into the corridor will be via Annerley Road, Cope Street, Fenton Street, Noble Street, Kent Street, Sampson Street, Mildmay Street and Ensign Avenue. Traffic management will be set up to manage an increase in vehicle movements in these areas. Please follow the direction of traffic control and signage and allow for extra time to travel
- Increased noise, vibration and dust associated with the use of heavy machinery and equipment
- Trucks and machinery including concrete trucks and pumps, frontend loaders, excavators with rock breakers, vacuum trucks, piling rig, mobile cranes, small power tools, minor vibrating equipment and mobile lighting towers to light work areas at night.

We appreciate your patience during construction and will continue to update you as work progresses.

Rail corridor access points, work areas and pedestrian detours during September 2023



☎ 1800 010 875

✉ info@unityalliance.com.au

🌐 crossriverrail.qld.gov.au



If you need an interpreter to assist you in understanding this document, please call the Translating and Interpreting Service (TIS National) on 131 450 and request to be transferred to Multicultural Affairs Queensland on 13 QGOV (13 74 68)

