

Works Notice

August 2023

Pimpama station construction update

ADCO Constructions is continuing major construction activities along Kosciuszko Circuit and site compound activities on the corner of Mebbin Street and Gainsborough Drive.

Further construction work will also continue within the rail corridor.

Construction of the new Pimpama station access road is ongoing with drainage and utility relocation works continuing along the Old Pacific Highway between Pimpama Jacobs Well Road and Mebbin Street.

Major construction

Eastern works area – adjacent to Kosciuszko Circuit and Great Sandy Circuit

Western works area – corner of Mebbin Street and Old Pacific Highway

Main site compound – corner of Mebbin Street and Gainsborough Drive.



Throughout August, major construction activities will continue, including:

Eastern works area

- Excavation and earthworks.
- Concrete pouring and curing to support infrastructure.
- Continued piling for platform one, including installation of capping beams.
- Installing pedestrian overpass support piers, stair structures and pile cap foundations.
- Excavation of platform 1 retaining walls for lift shaft installation.

Western works area

- Excavation and earthworks for the station car park.
- Continued piling works (preparation for platforms, overhead bridge, pedestrian lifts, and overhead line foundations).
- Ongoing investigation and relocation of underground utilities.

Access to surrounding properties will be maintained during the works with possible delays due to truck movements via traffic control management.

Rail corridor works – adjacent to Kosciuszko Circuit, Great Sandy Circuit and Gainsborough Drive.



Rail corridor works are planned to occur outside normal working hours during scheduled track closures, with high impact activities planned between the hours listed below where possible.

Rail corridor works (nightworks if required) are scheduled, pending construction and weather conditions, for:

- 6am Saturday 12 August to 6pm Sunday 13 August 2023

Rail corridor work in August will include:

- Excavation and earthworks within the eastern side of the rail corridor.
- Transport of excavated material from the eastern rail corridor to the western works area.

- Piling activities in preparation for the new rail station platform and associated infrastructure.
- Installation of overhead line supporting infrastructure.

Early Works – station access road and drainage

Station access road construction and drainage works – within worksite and along the Old Pacific Highway between Pimpama Jacobs Well Road and Mebbin Street.



- Traffic changes on the Old Pacific Highway where lanes will be shifted to the west between Pimpama Jacobs Well Road and Mebbin Street.
- Removal and resurfacing of road pavement on the Old Pacific Highway.
- Earthworks in the road shoulder and verge of the southbound lane of the Old Pacific Highway between Pimpama Jacobs Well Road and Bedford Road to create a future turning lane for the new station access road.
- Electrical works in preparation for the new signalised intersection, including installing conduits, cabling and lighting.
- Pouring concrete and constructing shared paths and kerb channels.
- Landscaping and rock laying within the drain on the corner of Bedford Road and the Old Pacific Highway.
- Temporary changes to pedestrian movements around the work site.
- Ongoing temporary closure of access into Bedford Road from the Old Pacific Highway. Intermittent traffic changes on Old Pacific Highway including lane closures, please follow the instructions of traffic control through this area.

Key: Work hours

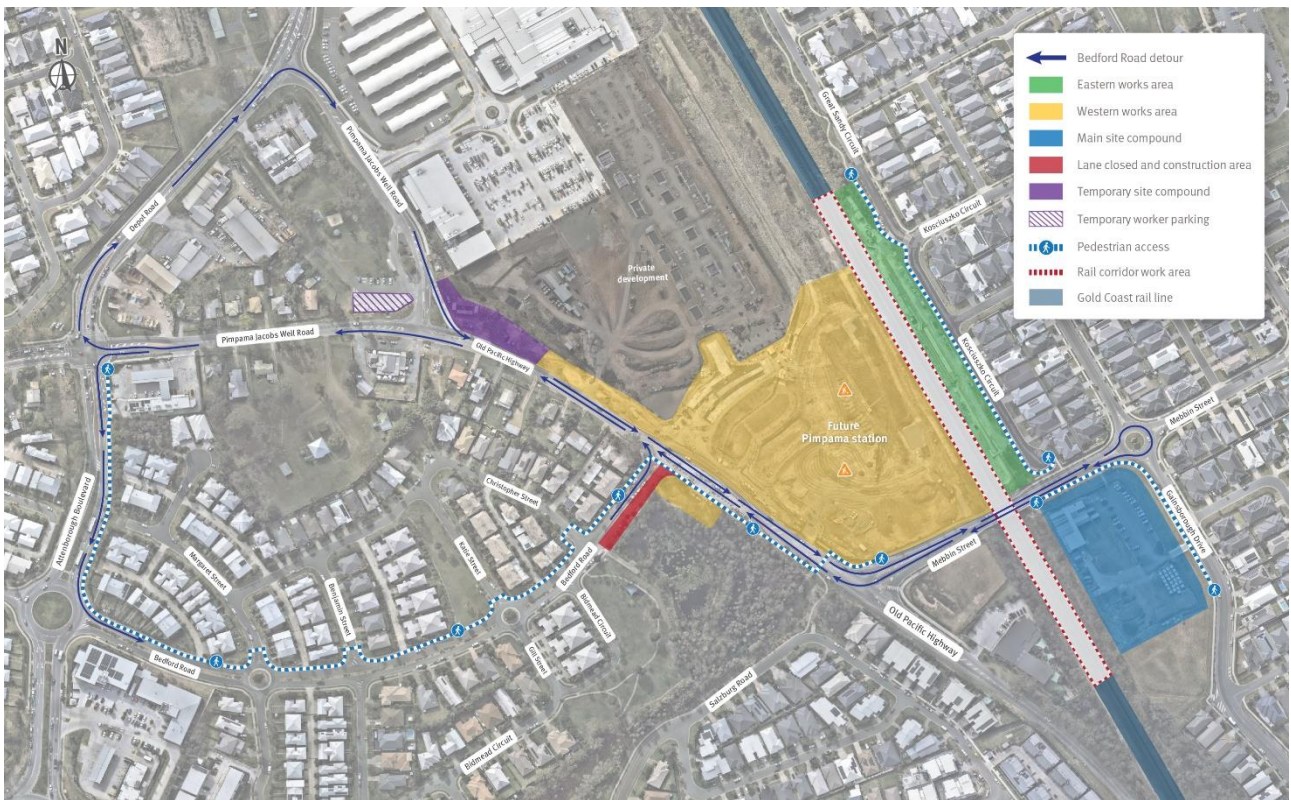
	<p>Standard construction hours</p> <p>Works will be undertaken between 6.30am until 6.30pm Monday to Saturday. Truck movements and temporary traffic holds will be reduced during peak hour periods to minimise impacts to motorists.</p>		<p>24 hours</p> <p>Rail corridor works are undertaken 24 hours a day, 7 days a week with high impact activities planned between 6.30am to 6.30pm where possible.</p> <p>Queensland Rail is assisting with enabling works to support the construction of Pimpama station including signalling, overhead line, and telecommunication activities.</p>
--	--	--	---

What to expect

- Increase in worker vehicles around the new site office and car park on the corner of Old Pacific Highway and Pimpama Jacobs Well Road.
- Traffic controls will be in place along the Old Pacific Highway and Bedford Road, including reduced speed limits and minor traffic holds to assist with carrying out construction activities safely.
- Construction activities may generate increased levels of noise, dust and vibration in the area associated with the works being undertaken.
- Lighting will be required during the rail corridor works.
- Increase in workforce and construction vehicle movements around the station site for transport of materials, equipment, and machinery.
- Pedestrian and vehicle access along Kosciuszko Circuit, Great Sandy Circuit and Gainsborough Drive will be maintained during these works with traffic control to assist pedestrians and motorists.

- Increased traffic movements with trucks transporting excavated material from the eastern rail corridor on Kosciuszko Circuit to the western works area and main site compound.
- Please be aware of changed traffic conditions and adhere to reduced speed limits.

Work areas and vehicle movements



Changes to the way you travel

These three new stations on the Gold Coast Line will transform the way we travel across South-East Queensland but building them means changes to travel and transport services during construction.

Head to the website to sign up to receive updates and use the TransLink Journey Planner at translink.com.au, call 13 12 30 or download the MyTransLink app to plan your journey in advance.

Enquiries and project information

If you have any enquiries or wish to speak with a member of the project team, please contact 1800 010 875 or email pimpamastation@adcoconstruct.com.au.

For more information about the project visit www.crossriverrail.qld.gov.au. Scan the QR code to register to receive project updates.



1800 010 875

info@crossriverrail.qld.gov.au

crossriverrail.qld.gov.au



If you need an interpreter to assist you in understanding this document, please call the Translating and Interpreting Service (TIS National) on 131 450 and request to be transferred to Multicultural Affairs Queensland on 13 QGOV (13 74 68)

