

# Works Notice

August 2023

## Construction update Rocklea station

In July 2023, UNITY Alliance installed the new Rocklea station overpass, removed the original timber station overpass and continued installation of platform canopies. During August 2023, service relocation works, overpass fit out, drainage works, retaining walls and platform construction will continue at Rocklea station.

### Details of work

The following activities are scheduled to occur between 6:30am and 6:30pm, Monday to Saturday during August 2023, weather and construction conditions permitting:

- Continue construction of inground services including excavation for drainage and installation of service protection (e.g., concrete casing), conduits and pits
- Continue installation of station platform canopy steel, formwork and concreting
- Continue fit out of the new pedestrian overpass including electrical, lighting and flooring
- Continue construction of station retaining walls
- Installation of structural steel and pre-cast concrete panels for lift structures.

The following activities will occur outside the project's normal working hours, as outlined below:

Location	Date and hours of work	Type of work
Rocklea station	Intermittently between 6:30pm and 6:30am during August 2023	<ul style="list-style-type: none"><li>• Delivering materials and equipment onto station platforms and removal of materials from site</li><li>• Platform concrete slab pours using concrete trucks and pump trucks</li><li>• Retaining wall blockwork construction.</li></ul>
Rocklea station and rail corridor	Between 6:00am Saturday 19 and 10:00pm Sunday 20 August 2023	<ul style="list-style-type: none"><li>• Installation of structural steel for station buildings and canopies</li><li>• Installation of overhead electrical line foundations and masts</li><li>• Platform construction including steel fixing, concreting and installation of services.</li></ul>

### What to expect

During these works you may notice some intermittent disruptions such as:

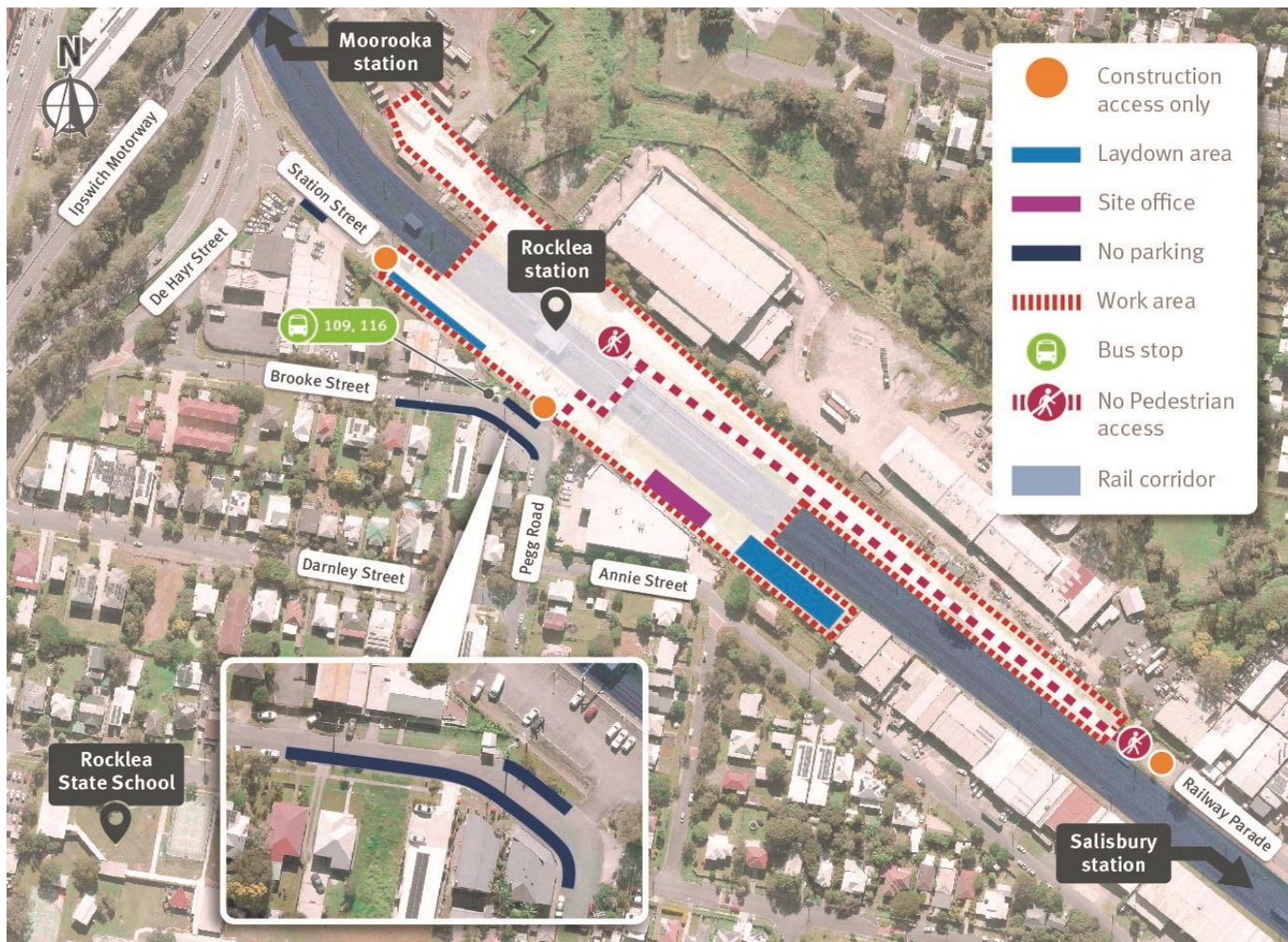
- Trucks and machinery including frontend loaders, excavators with rock breakers, vacuum trucks, concrete trucks, pump trucks, mobile cranes, saws, small power tools, minor vibrating equipment, and mobile lighting towers to light work areas at night
- Changes around your local areas such as construction vehicles, traffic management signs and personnel
- Increased noise, vibration and dust associated with the use of heavy machinery and equipment.

**Cross River Rail won't just transform Brisbane, it will transform the way we travel across South East Queensland. But building Cross River Rail means changes to travel and transport services during construction. Plan your journey by downloading the MyTranslink app, visit [translink.com.au](https://translink.com.au) or call 13 12 30.**

We appreciate your patience during construction and will continue to update you as work progresses.



## Work areas and construction access points at Rocklea station



July 2023 - New Rocklea station pedestrian overpass installation