

Works Notice

August 2023

Construction update Dutton Park station

During July 2023, UNITY Alliance continued construction of retaining wall structures and noise walls at Dutton Park station. In August 2023, work will continue on construction of the new platforms 1 and 2, drainage and overhead electrical structures.

Details of work

The following activities are scheduled to occur between 6:30am and 6:30pm, Monday to Saturday during August 2023, weather and construction conditions permitting:

- Continue construction of a new retaining wall near Cope Street and the Annerley Road and Cornwall Street intersection
- Continue construction of platforms 1 and 2 including the installation of services and precast units
- Construction of a rail corridor maintenance access and noise barrier alterations at Fenton Street, Fairfield
- Continue construction of a noise barrier between Cope and Sampson streets
- Commence construction of the new station entrance on Noble Street including earthworks and service relocation
- Construction of a retaining walls along Kent Street including shotcrete and piling works.

Out of hours work

The following activities will occur outside the project's normal working hours, weather and construction conditions permitting:

Location	Date and hours of work	Type of work
Between Ensign Avenue and Kent Street	Intermittently between 6:30pm and 6:30am throughout August 2023	<ul style="list-style-type: none">• Occasional equipment and materials deliveries to site• Service identification using a vacuum truck around the station precinct• Track work and maintenance.

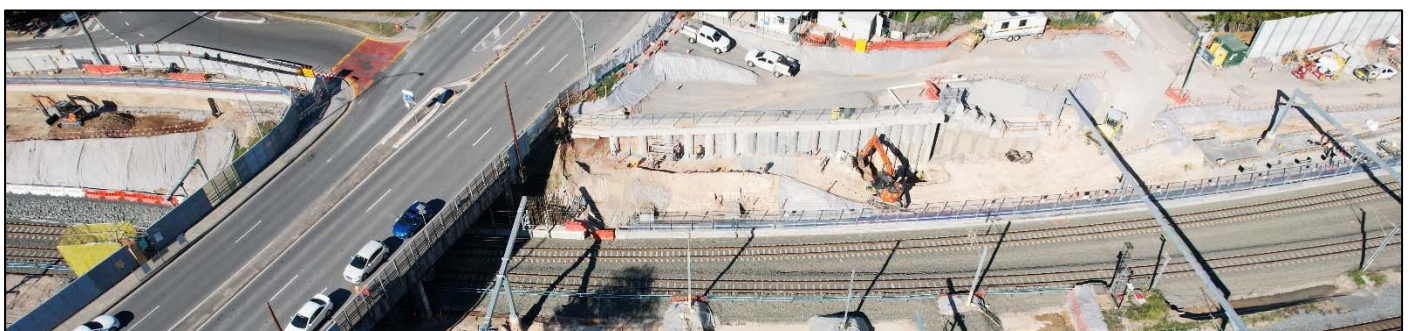
What to expect

During these works you will notice some disruptions such as:

- Access into the corridor will be via Annerley Road, Cope Street, Fenton Street, Noble Street, Kent Street, Sampson Street, Mildmay Street and Ensign Avenue. Traffic management will be set up to manage an increase in vehicle movements in these areas. Please follow the direction of traffic control and signage and allow for extra time to travel
- Increased noise, vibration and dust associated with the use of heavy machinery and equipment
- Trucks and machinery including concrete trucks and pumps, frontend loaders, excavators with rock breakers, vacuum trucks, piling rig, mobile cranes, small power tools, minor vibrating equipment and mobile lighting towers to light work areas at night.

We appreciate your patience during construction and will continue to update you as work progresses.

Cross River Rail won't just transform Brisbane, it will transform the way we travel across South East Queensland. But building Cross River Rail means changes to travel and transport services during construction. Plan your journey by downloading the MyTranslink app, visit translink.com.au or call 13 12 30.



June 2023 – Retaining wall construction at Dutton Park station

Rail corridor access points, work areas and pedestrian detours during August 2023

