

# Works Notice

August – September 2023

## Construction update Mayne Yard

**In August and September 2023, works will continue in the Mayne Yard stabling facility including earthworks, track modifications, removal of redundant structures, installation of foundations and new masts for overhead electrical wires.**

### Details of work

During August and September 2023, the following activities are scheduled to occur between 6:30am and 6:30pm, Monday to Saturday, weather and construction conditions permitting:

- Relocation of services within Mayne Yard East
- Continue construction of a new internal pedestrian overpasses within Mayne Yard East
- Track modifications within Mayne Yard West
- Continue construction of the new rail bridge over Breakfast Creek
- Continue earthworks to construct new rail embankments
- Installation of foundations and masts for overhead electrical wires
- Sewer relocation works at the cul-de-sac of Campbell Street, Bowen Hills
- Ongoing installation of cable routes and pits within the rail corridor.

### Out of hours work

Additional activities will occur outside the project's normal working hours, as outlined below:

Location	Date and hours of work	Type of work
Mayne Yard, Bowen Hills	Intermittently between 6:30pm and 6:30am throughout August and September 2023	<ul style="list-style-type: none"> <li>• Concrete works including placement of formwork, steel fixing and concrete pours</li> <li>• Delivery of materials to site</li> <li>• Installation of conduits and pulling new cables</li> <li>• Track work and maintenance.</li> </ul>
	Between 3:00am Saturday 26 to 12:00am Sunday 27 August 2023	<ul style="list-style-type: none"> <li>• Installation of overhead electrical structures, signalling equipment, cable routes and pits within the rail corridor</li> <li>• Decommissioning of redundant facilities and services</li> </ul>
	Between 6:00am Saturday 23 September to 10:00pm Monday 2 October 2023	<ul style="list-style-type: none"> <li>• Breakfast Creek rail bridge construction, including earthworks and piling</li> <li>• Test pitting and service location works</li> <li>• Track work and maintenance.</li> </ul>

**Cross River Rail will transform the way we travel to, from, and through Brisbane in the future. But right now, construction means disruption to train services. Sign up to receive updates at our website and use Translink's journey planner at [translink.com.au](https://translink.com.au), call 13 12 30 or download the MyTranslink app to plan your journey.**

We appreciate your patience during construction and will continue to update you as work progresses.

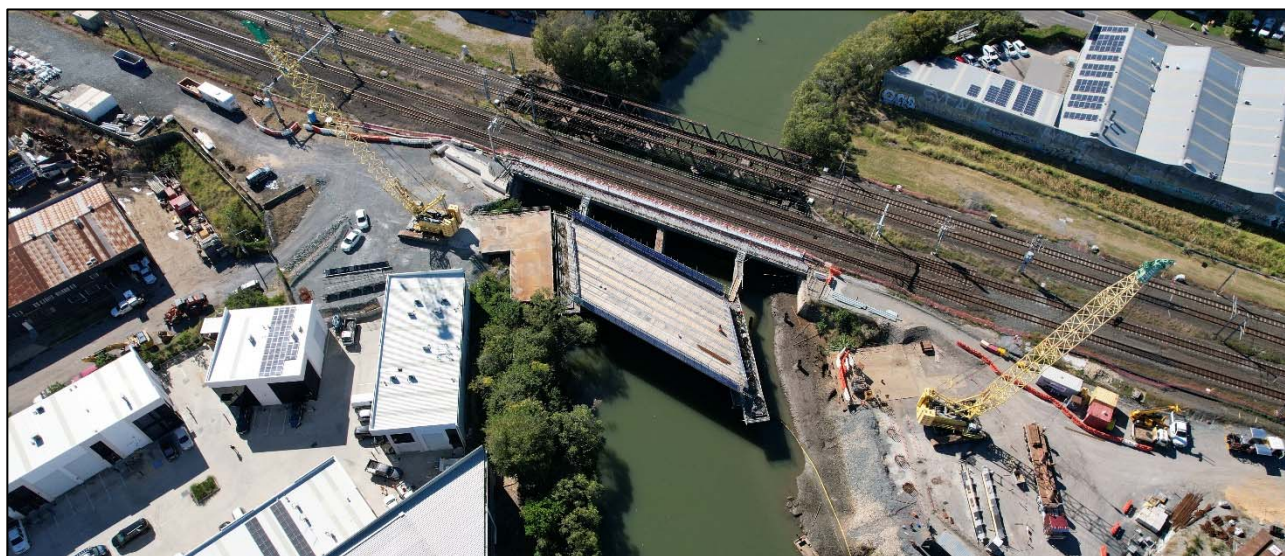
## Mayne Yard construction access points and work areas



## What to expect

During these works you may notice some intermittent disruptions such as:

- Light vehicles, trucks and machinery including excavators, augers, vacuum trucks, piling and drill rigs, concrete trucks, small power tools, minor vibrating equipment and mobile lighting towers to light the work areas at night
- Traffic control and signage on Campbell Street and Tufton Street, Bowen Hills for sewer relocation works
- Changes around your local area such as construction vehicles, traffic management signs and personnel
- Delivery trucks and workers' vehicles entering Mayne Yard North via the existing access road at Lanham Street and Mayne Road, Bowen Hills and intermittently via Grafton Street, Windsor
- Some increased levels of noise, vibration and dust associated with the use of heavy machinery and equipment
- Due to the construction of a new rail bridge, a section of Breakfast Creek near Grafton Street, Windsor has been temporarily closed to all boats / vessels until early 2024. The construction area boundaries will be marked with buoys on the water within Breakfast Creek.



June 2023 – Breakfast Creek rail bridge construction