

# Works Notice

August - September 2023

## Exhibition station construction update

During June and July 2023, UNITY Alliance commenced the installation of structural steel for the new Exhibition station platform. During August and September 2023, these works will continue along with construction of station retaining walls and a new railway bridge behind the John MacDonald Stand.

### Details of work

The following activities are scheduled to occur between 6:30am and 6:30pm, Monday to Saturday during August and September 2023, weather and construction conditions permitting:

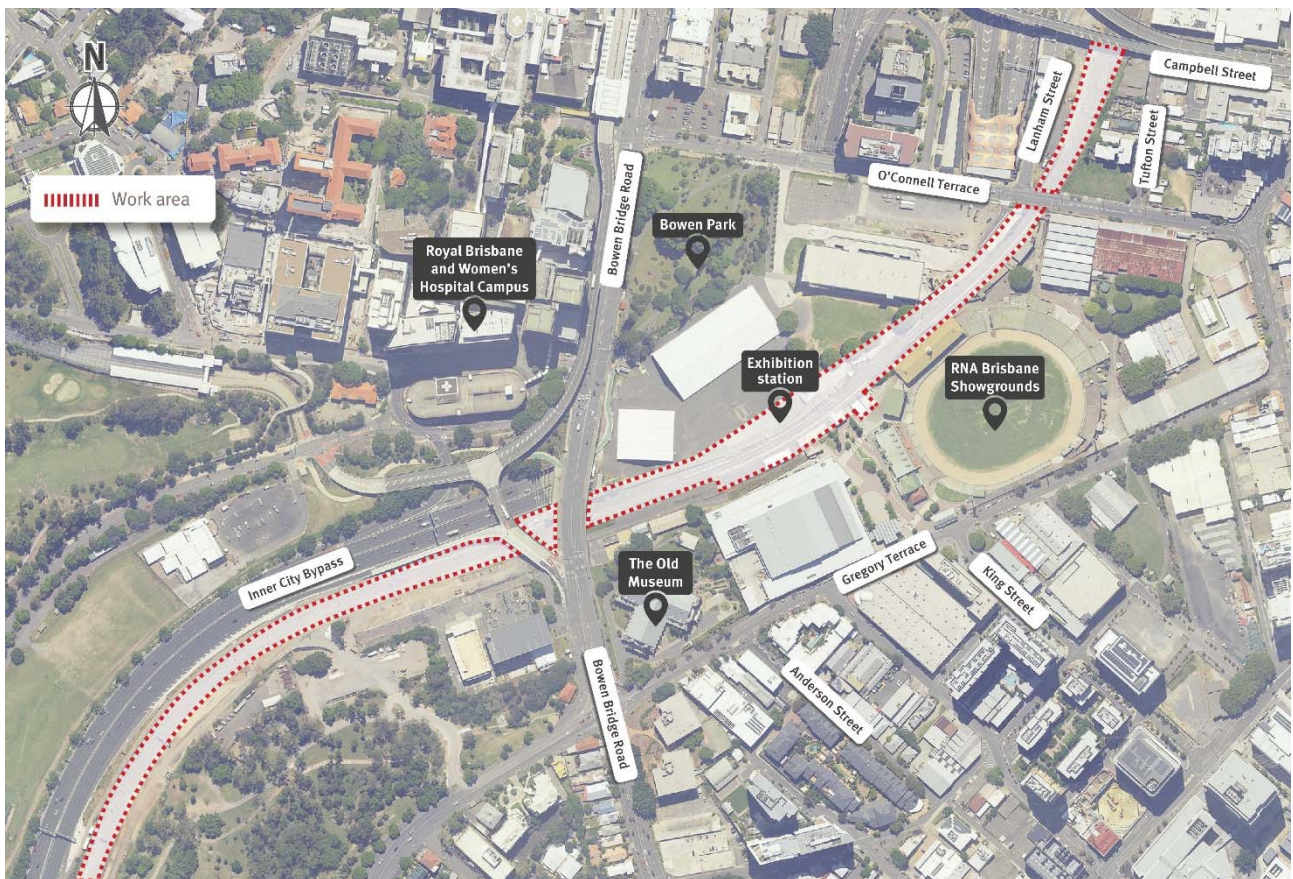
- Demolition and removal of redundant structures with the rail corridor
- Installation of mast foundations and structures for overhead electrical lines and cable routes and pits within the rail corridor between Campbell Street and south of Bowen Bridge Road
- Rock excavation within the rail corridor between Campbell Street and Bowen Bridge Road
- Station drainage and underground utility installation
- Installation of structural steel and concrete for new station platforms
- Construction of station retaining walls and new railway viaduct
- Sewer relocation works at the cul-de-sac of Campbell Street, Bowen Hills
- Surveying and investigating underground services, such as water, electricity and gas
- Track work and maintenance.

### Out of hours work

Additional activities will occur outside the project's normal working hours, as outlined below:

Location	Date and hours of work	Type of work
Spring Hill and Bowen Hills	<b>Night shift</b> Intermittently between 6:30pm and 6:30am throughout August and September 2023	<ul style="list-style-type: none"> <li>• Concrete deliveries and pours</li> <li>• Installation of cable routes and pits within the rail corridor including pulling new cables in conduits</li> <li>• Minor earthworks and rock excavation to support signalling and service installation</li> <li>• Installation of structural steel and concrete pours for new station bridges and platforms</li> <li>• Track work and maintenance.</li> </ul>
	Between 6:00am Saturday 23 September to 10:00pm Monday 2 October 2023	<ul style="list-style-type: none"> <li>• Rock excavation and earthworks between Campbell Street, Bowen Hills and Victoria Park, Spring Hill</li> <li>• Installation of overhead electrical structures, mast foundations, signalling equipment, cable routes and pits within the rail corridor</li> <li>• Installation of structural steel and concrete pours for new station bridges and platforms.</li> <li>• Earthworks and installation of drainage</li> <li>• Track work and maintenance.</li> </ul>

## Work area Exhibition station precinct in August and September 2023



### What to expect

During these works you may notice some intermittent disruptions such as:

- Light vehicles, trucks and machinery including excavators with hydraulic hammers, mobile cranes, small power tools, drills, saws, minor vibrating equipment and mobile lighting towers to light the work areas at night
- Use of large machinery such as excavators with hydraulic hammers to remove rock and concrete structures around between Campbell Street and Bowen Bridge Road and load material into trucks for transport
- Changes around your local area such as construction vehicles, traffic management signs and personnel
- Increased levels of noise, vibration and dust associated with the use of heavy machinery and equipment
- Access into the rail corridor will be via the Victoria Park access road, Bowen Bridge Road, Lanham Street and O'Connell Terrace via the RNA Showgrounds.

We appreciate your patience during construction and will continue to update you as work progresses.

### Changes to Ekka Public Transport

Travel to the Ekka in 2023 may be different due to the construction of Exhibition station as part of Cross River Rail. There'll be plenty of high-frequency bus and train services from nearby stops and stations to get you to the show.

Simply hop on a bus or Ekka shuttle to Herston busway station or catch a train to Fortitude Valley station. Other transport options are also available from nearby stops and stations.

Find out more by visiting the Translink website <https://www.translink.com.au/ekka>