

Works Notice

July 2023

Roma Street station Subway and Bus Platform Upgrades

INTREC Management is continuing with the first stage of subway demolition works between platforms 10 and 7. Once demolition works in area one are complete, the work zone will extend into area two between platforms 6 and 3. Upgrade works are being undertaken to complement the new underground Roma Street station.

In June, preparatory works, including the installation of hoarding to establish work areas within the subway and on Parkland Crescent began. Over the coming months, demolition works to remove existing tiles and parts of the ceiling will take place.

Details of work

Station subway

The following demolition activities will be undertaken within the station subway:

- installation of floor-to-ceiling hoarding around work areas
- removal of station subway floor tiles with the use of jackhammers and floor grinders
- removal of parts of the ceiling.

Demolition work in front of stairs and lifts will be completed out of hours to maintain access during station operating hours. More information is detailed on the map over the page.

Following demolition, fit out activities within established work areas will commence including:

- installation of new flooring, wall tiles and new ceiling panels
- lighting upgrades.

Works are scheduled to occur between 6:30am and 6:30pm, Monday to Sunday, construction conditions permitting. When required, out of hours work will be undertaken between 11pm and 5am Monday to Sunday. Subject to construction conditions.

Parkland Crescent works area

In June, a work area was established on Parkland Crescent to support construction activities within the station subway. The following activities will take place in July:

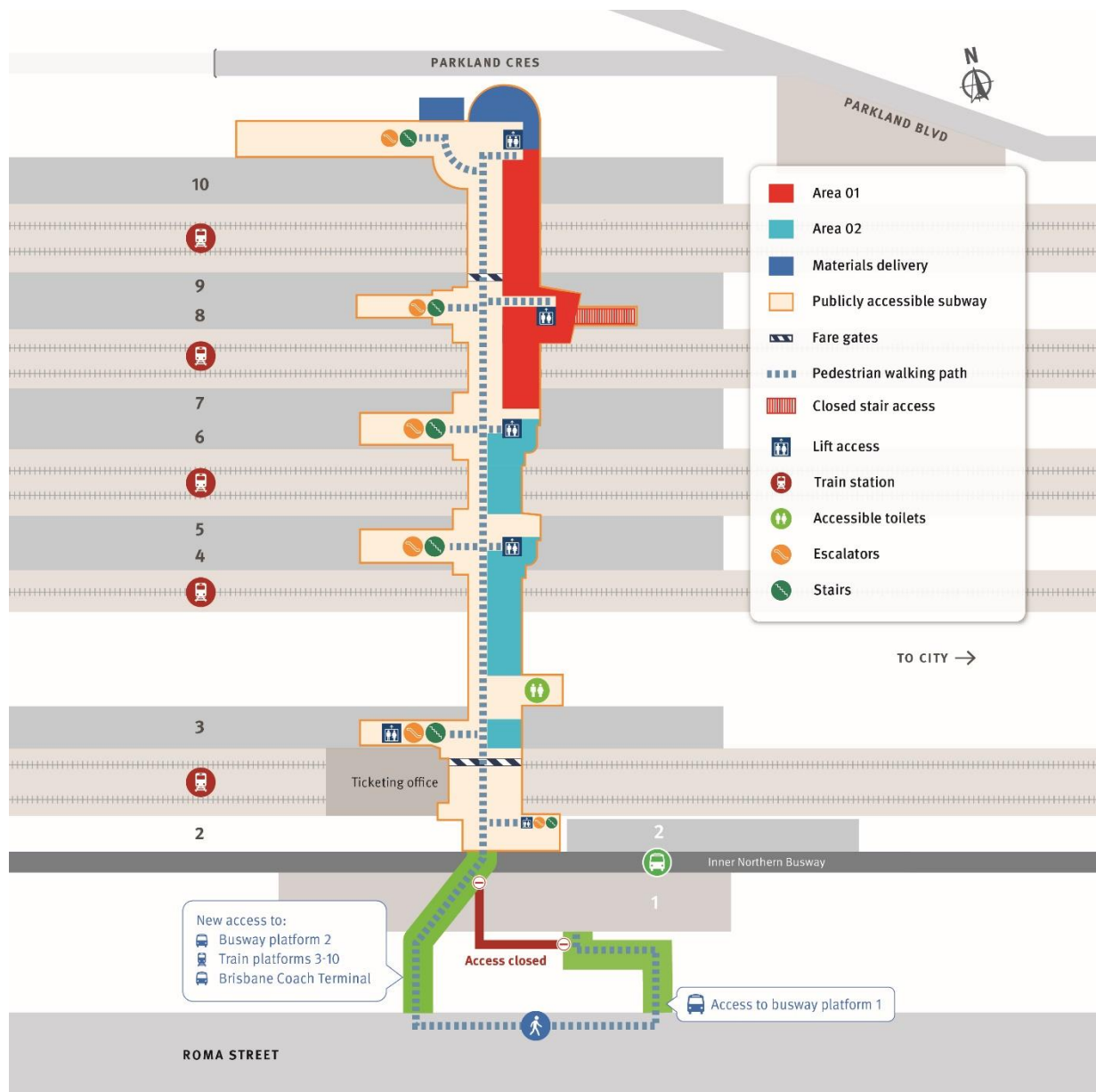
- removal of a small area of vegetation within the established work area. The garden bed will be reinstated at the end of project works
- concrete pours involving concrete trucks and pumps parked on Parkland Crescent
- installation of a small goods lift, which will be used to transport materials between the subway and the Parkland Crescent work area.

Due to operational requirements of Roma Street station and Brisbane Coach Terminal, some works are required to be undertaken between 10:30pm and 5am Monday to Sunday. Residents in close proximity may experience an increase in noise levels.

Platform 2

The following activities will continue on the western side of platform 2, which is currently closed to the public:

- removal of existing platform finishes with the use of jackhammers and floor grinders
- saw cutting to remove and reconstruct platform columns
- installation of the ceiling to the existing platform canopy
- installation of electrical components such as power and lighting.



What to expect

During these works, access to platforms, lifts and the subway will be maintained with temporary and intermittent changes to customer access. Customers and the local community may notice an increase in construction activities and workforce, which may generate increased levels of noise, dust and vibration. Mitigation measures will be in place, where possible, to reduce impacts.

There will be intermittent use of concrete saws, jackhammers, grinders, small power tools, minor vibrating equipment, generators, concrete pumps, vacuum trucks and mobile lighting towers to light work areas at night.

Materials and machinery for subway works will be delivered and removed from site between 11pm and 5am via Parkland Crescent. Vehicle access through Parkland Crescent will be maintained under the direction of traffic control.

We appreciate your patience during construction and will continue to update you as work progresses.

Register to receive construction updates

The Cross River Rail Delivery Authority is committed to keeping stakeholders and the community informed about the project. If you have any questions or would like to find out more about the project, scan the QR code or contact the project team (see details below).



☎ 1800 010 875

✉ info@crossriverrail.qld.gov.au

🌐 crossriverrail.qld.gov.au



If you need an interpreter to assist you in understanding this document, please call the Translating and Interpreting Service (TIS National) on 131 450 and request to be transferred to Multicultural Affairs Queensland on 13 QGOV (13 74 68)

