

# Works Notice

July 2023

## Construction update Rocklea station

In June 2023, UNITY Alliance commenced the installation of structural steel for platform canopies. During July 2023, service relocation works, overpass construction, drainage works, retaining walls and platform construction will continue at Rocklea station.

### Details of work

The following activities are scheduled to occur between 6:30am and 6:30pm, Monday to Saturday during July 2023, weather and construction conditions permitting:

- Continue construction of inground services including excavation for drainage and installation of service protection (e.g., concrete casing), conduits and pits
- Continue installation of station platform canopy steel, formwork and concreting
- Installation of new pedestrian overpass including works for the new station lifts and stairs, and demolition of existing timber overpass
- Continue construction of the station's new retaining walls.

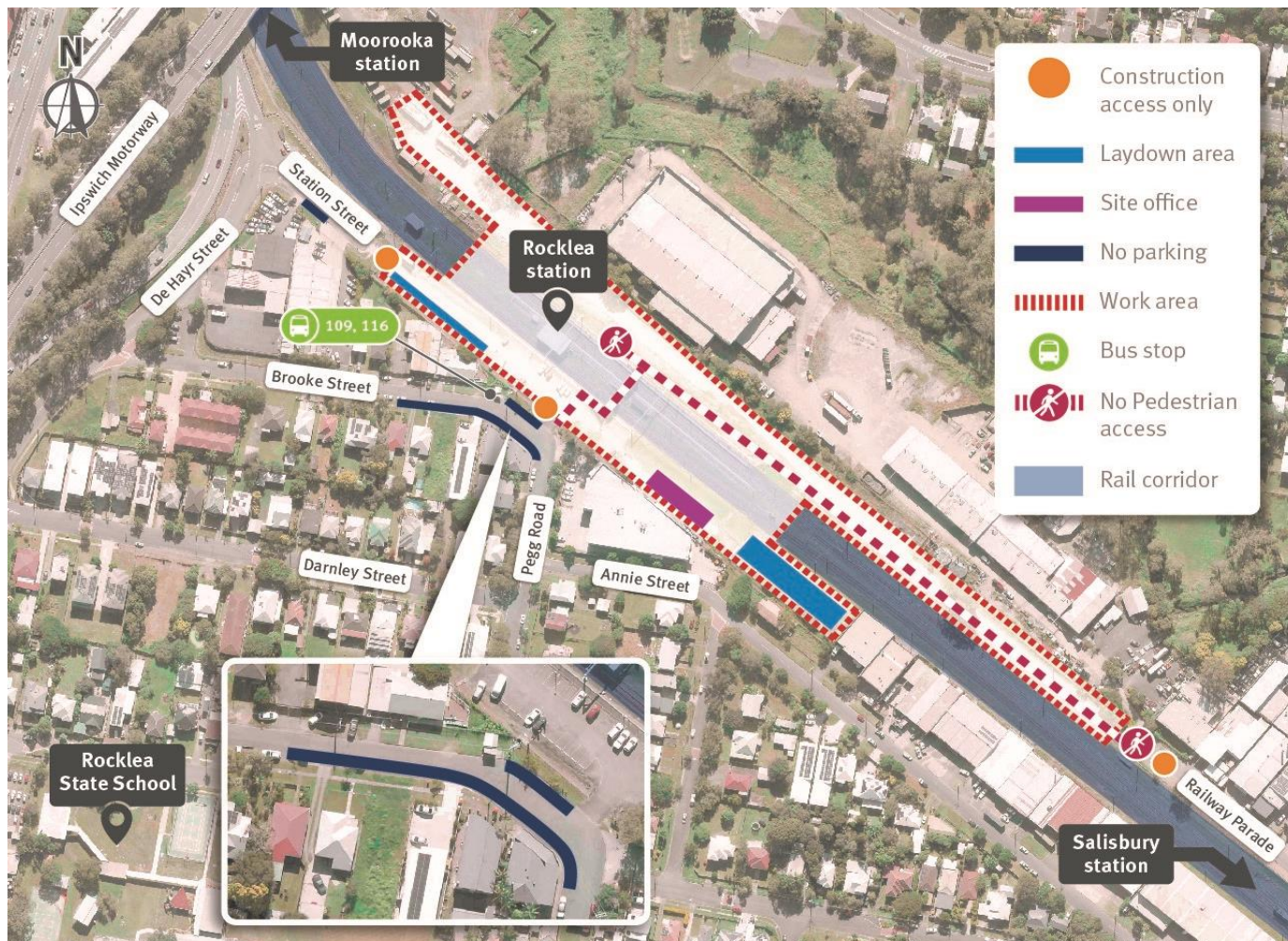
The following activities will occur outside the project's normal working hours, as outlined below:

Location	Date and hours of work	Type of work
Rocklea station	Intermittently between 6:30pm and 6:30am during July 2023	<ul style="list-style-type: none"> <li>• Delivering materials and equipment onto station platforms and removal of materials from site</li> <li>• Platform concrete slab pours using concrete trucks and pump trucks</li> <li>• Retaining wall blockwork construction.</li> </ul>
Rocklea station and rail corridor	Between 12:00am Saturday 1 and 3:00am Monday 3 July 2023	<ul style="list-style-type: none"> <li>• Installation of the new overpass steelwork</li> <li>• Installation of overhead electrical line foundations and masts</li> <li>• Platform construction including steel fixing, concreting, and installation of services</li> <li>• Cable service route relocation and under track crossing installation between Rocklea and Salisbury stations.</li> </ul>
	Between 2:00am Saturday 15 to 3:00am Monday 17 July 2023	<ul style="list-style-type: none"> <li>• Installation of the new overpass steelwork</li> <li>• Demolition of existing timber overpass</li> <li>• Platform construction including steel fixing, concreting, and installation of services.</li> </ul>

Cross River Rail won't just transform Brisbane, it will transform the way we travel across South East Queensland. But building Cross River Rail means changes to travel and transport services during construction. Plan your journey by downloading the MyTranslink app, visit [translink.com.au](https://translink.com.au) or call 13 12 30.

We appreciate your patience during construction and will continue to update you as work progresses.

## Work locations at Rocklea station



## What to expect

During these works you may notice some intermittent disruptions such as:

- Trucks and machinery including frontend loaders, excavators with rock breakers, vacuum trucks, concrete trucks, pump trucks, mobile cranes, saws, small power tools, minor vibrating equipment, and mobile lighting towers to light work areas at night
- Changes around your local areas such as construction vehicles, traffic management signs and personnel
- Increased noise, vibration and dust associated with the use of heavy machinery and equipment.