

Works Notice

May – June 2023

Construction update Rocklea station

During May and June 2023, UNITY Alliance will continue service relocation works, overpass construction, drainage works, retaining walls and platform construction at Rocklea station.

Details of work

The following activities are scheduled to occur between 6:30am and 6:30pm, Monday to Saturday during May and June 2023, weather and construction conditions permitting:

- Continue construction of inground services including excavation for drainage and installation of service conduits and pits
- Continue installation of station platform steel reinforcement, formwork and concreting
- Inground service investigation, disconnection, and relocation works for stormwater and drainage
- Continue works for the new station lifts, stairs and pedestrian overpass including crane pad construction and the installation of the new overpass columns
- Continue construction of the station new retaining walls.

The following activities will occur outside the project's normal working hours, as outlined below:

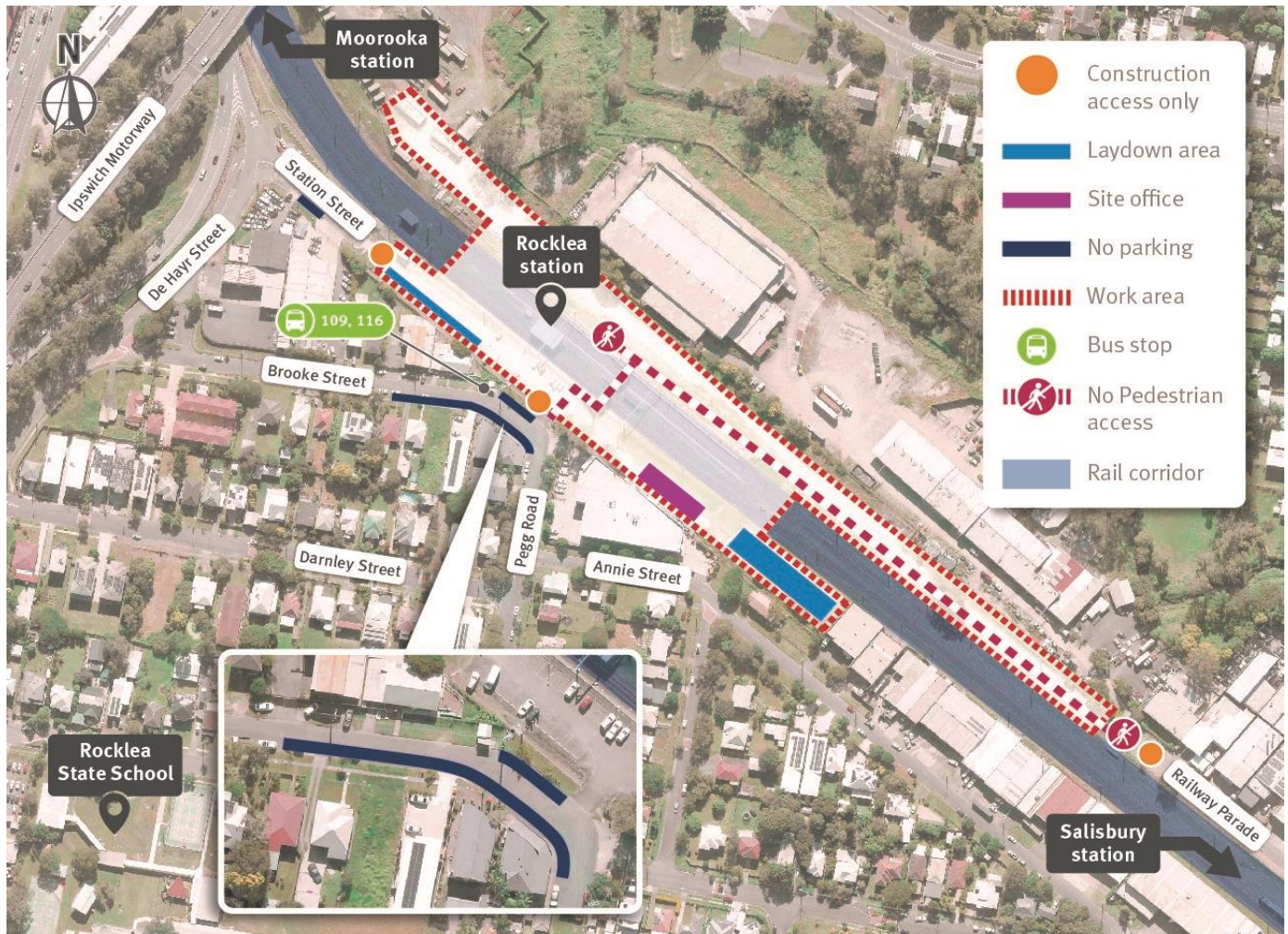
Location	Date and hours of work	Type of work
Rocklea station	Intermittently between 6:30pm and 6:30am during May 2023	<ul style="list-style-type: none"> • Delivering materials and equipment onto station platforms and removal of materials from site • Platform concrete slab pours using concrete trucks and pump trucks • Retaining wall blockwork construction.
Rocklea station and rail corridor	Between: <ul style="list-style-type: none"> • 6:00am Saturday 13 and 8:00pm Sunday 14 May 2023 • 6:00am Saturday 27 and 8:00pm Sunday 28 May 2023 • 2:00am Saturday 17 to 2:00am Monday 19 June 2023 	<ul style="list-style-type: none"> • Installation of the new overpass support columns • Installation of overhead electrical line foundations and masts • Platform construction works including steel fixing, concreting and installation of platform edge steel members • Cable service route relocation and under track crossing installation works between Rocklea and Salisbury stations.

Cross River Rail won't just transform Brisbane, it will transform the way we travel across South East Queensland. But building Cross River Rail means changes to travel and transport services during construction. Plan your journey by downloading the MyTranslink app, visit translink.com.au or call 13 12 30.

If you would like to speak with a member of the UNITY Alliance Project Team about these planned works, please contact 1800 010 875 or email info@unityalliance.com.au anytime for more personalised consultation.

We appreciate your patience during construction and will continue to update you as work progresses.

Work locations at Rocklea station



What to expect

During these works you may notice some intermittent disruptions such as:

- Trucks and machinery including frontend loaders, excavators with rock breakers, vacuum trucks, concrete trucks, pump trucks, mobile cranes, saws, small power tools, minor vibrating equipment, and mobile lighting towers to light work areas at night
- Changes around your local areas such as construction vehicles, traffic management signs, and personnel
- Increased noise, vibration and dust associated with the use of heavy machinery and equipment.