

Work Notice

June & July 2023

Albert Street station construction update

The main station entrance site (Lot 1) marked a milestone in May with the start of fit-out (blockwork installation) in the station building. The underground cavern site (Lot 2) also recently celebrated passing the half-way mark for mezzanine platform installation.

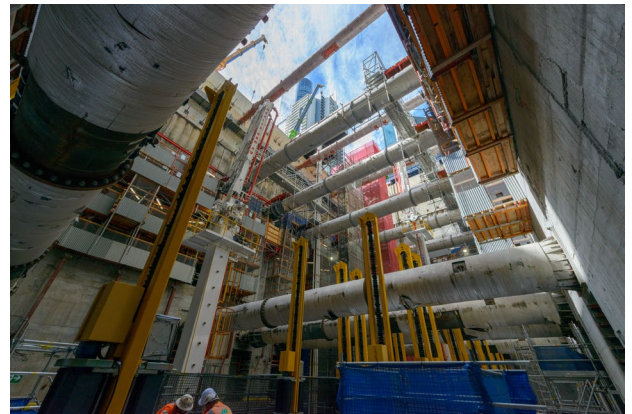
In June and July, all three Albert Street construction sites will continue with concreting, steel fixing, material and equipment deliveries, site facility adjustments and service installation activities.

Lot 1 – Main station entrance site (corner of Mary and Albert streets)



- Large concrete pours (requiring night work and early mornings) involving concrete trucks and pumps parked on Mary Street, and Albert Street near Charlotte Street.
- Cutting and fixing steel reinforcement bars and mesh.
- Transport of materials, equipment and machinery.
- Slip form and jump form operation including anchor drilling.
- Utility, survey and geotechnical work including potholing.
- Station fit-out including blockwork and services installation.
- Site facility adjustments.

Caption: Jump form system climbing up at the Lot 1 site



Lot 2 – Tunnelling and support activities within the acoustic shed and in the underground cavern



- Installing formwork, steel fixing and concreting activities underground.
- Service adjustments within the tunnel.
- Transport of materials, equipment and machinery.
- Back of house fit-out including installing blockwork.
- Delivery and installation of precast mezzanine segments and platform culverts.
- Installation of mezzanine hanger system.
- Tower crane installation (to facilitate Lot 1 construction).

Caption: Mezzanine loader machine installing precast segments and platform culverts



Tower crane installation at Lot 2

To facilitate construction of the main station entrance building (Lot 1), a tower crane will be installed in mid-2023 within the acoustic shed (Lot 2) located on Mary Street.

Due to the size of the crane, it will be delivered in segments on semi-trucks to a partially closed section of road on Mary Street. Road lanes and pedestrian footpath closures will be required during the installation period.

Stay up to date with this construction activity, and other work around the Albert Street precinct, by joining our email and SMS distribution list. See overleaf for more information on how to register.





- Large concrete pours (requiring night work and early mornings) involving concrete trucks and pumps parked on Albert Street near Charlotte and Elizabeth streets.
- Installing jump form to construct the building.
- Cutting and fixing steel reinforcement bars and mesh.
- Transport of materials, equipment and machinery.
- Tower crane removal and installation of a new crane. Some lane closures may be required. (More information to be provided prior to works commencing).
- Setting up a temporary mobile crane.
- Site surface excavation works.
- Site facility adjustments including partial gantry removal and site office changes.
- Temporary structure demolition including slab, retaining wall, piles and capping beam.

Local streets – Albert Street between Alice and Queen streets: Elizabeth, Charlotte and Mary streets



- Installing, maintaining and removing monitoring equipment and services.
- Utility, borehole and geotechnical investigations and maintenance.
- Vegetation maintenance.
- Permanent service and utility connections.
- Manhole relining.
- Sewer maintenance (CCTV).

What to expect

During construction of the new station buildings and underground platform, there will be an increase in workforce and vehicles at the three Albert Street sites for the transport of materials, equipment and machinery.

Nearby residents and businesses may also experience an increase in dust, noise and vibration.

For your safety, intermittent temporary pedestrian and traffic holds and diversions will be in place near the worksites during concrete pours and other deliveries to the sites. Please follow all directions of traffic controllers.



Construction hours



Standard construction: 6:30am – 6:30pm
Monday to Saturday.



Out of hours, 6:30pm – 6:30am
Some activities will be completed out of normal construction hours due to traffic permits, safety requirements and construction methodology. Register for weekly email updates. See right.



Tunnelling and support activities
24 hours a day, 7 days per week.

New to the area? Stay up to date

Register to receive **construction email updates** and SMS notifications ahead of major construction activities.

Send your name, email address and mobile number to crossriverrail@cbgujv.com.au.

Personal information collected by Cross River Rail Tunnel & Stations for the purposes of email and SMS services will be managed in accordance with the Information Privacy Act 2009 (QLD).

Interested in how we are building Albert Street Station?

If you are interested in how we are building Albert Street Station please contact our team or visit the Cross River Rail Experience Centre at Level 1/151 Elizabeth Street, Brisbane City.



☎ 1800 010 875

✉ crossriverrail@cbgujv.com.au

🌐 crossriverrail.qld.gov.au



If you need an interpreter to assist you in understanding this document, please call the Translating and Interpreting Service (TIS National) on 131 450 and request to be transferred to Multicultural Affairs Queensland on 13 QGOV (13 74 68)

