

Works Notice

June / July 2023

Roma Street station construction update

In May, the Roma Street site team achieved a major milestone, completing mezzanine installation within the underground station cavern. Construction continues with back of house fit-out, block work and platform culvert installation.

Throughout June and July, construction of the main station building will continue in preparation for delivery of the steel canopy structure.

Roma Street station and services update

In **June and July**, precast concrete panels and structural steel will be delivered and installed in the mechanical and electrical services building. As construction of the external structure continues, internal services and fit-out will be ongoing as well as completion of underground services.

Pedestrian access to Roma Street station changed on **26 May 2023**. The main station entrance, access to platform 2-10, is now 100 metres west (towards Suncorp Stadium). Access to Busway Platform 1 remains in its current location.

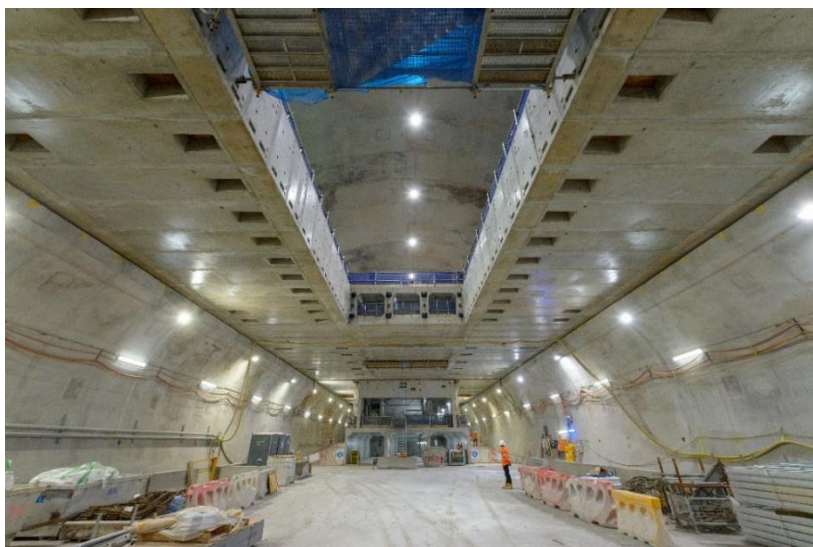
Relocation of pedestrian access will enable construction of the future station building. Delivery and construction of the future station canopy will require ground strengthening work including concrete slab pours, piling and jackhammering. Piling will be undertaken during the day.

Roma Street station subway and bus platform upgrades

INTREC Management will undertake work to complete a much-needed visual transformation of the existing Roma Street station subway and busway platform 2.

From **late May 2023 until mid-2024**, work will be undertaken to upgrade the architectural finishes within the station subway and on busway platform 2 to complement the new underground Roma Street station.

Visit [here](#) for more information on these works.



Scan QR code below for more information on Roma Street station:



Scan QR code below for more information on Roma Street services building:



Above: Installed mezzanine within underground cavern viewed looking towards eastern back of house.

Station and Services buildings

Roma Street

Constructing the new buildings

Ongoing

Day and night work

- Ground strengthening and foundation work including piling, jackhammering and scaffolding.
- Cutting and fixing steel reinforcement and installing formwork.
- Large concrete pours to construct building floor slabs and walls.
- Precast concrete panel delivery and installation.
- Delivery of canopy steel to construct future station canopy. Canopy installation up to 23 metres high, noise mitigated where possible.
- Steel erection for canopy requires use of rattle guns, hand tools, bolt tensioning and landing steel on steel during day and night.
- Delivery of equipment and materials to worksite and crane use both day and night.
- Service, blockwork and fit-out in back of house, mechanical and electrical building, service adits and station building.
- Delivery and installation of escalators scheduled for mid-2023

Roma Street station

Busway Platform 2

Platform 2 construction activities

Ongoing

Day and night work

- Installing steel, roof sheeting, guttering and service fit-out to construct the platform canopy.
- Concrete demolition and utilities investigation using excavators, jackhammering and hand tools.
- Delivering equipment and materials to the worksite via the Roma Street construction site and on the busway. Lifts completed at night outside of bus operational hours.
- Use of the Roma Street construction site tower crane and mobile cranes.

Service work

Roma Street

Until mid-2023

Day and night work

- Temporary realignment of the existing footpath along Roma Street between Countess and Makerston streets.
- Relocation and realigning of electrical and stormwater underground utility services along Roma Street between Countess and Makerston streets.
- Installing service pits and water mains.
- Concrete cutting, jack hammering, hand tools and rock breaking which may generate increased levels of noise.
- Use of vacuum excavation trucks and electronic scanning of the road and footpath.
- Scaffolding installation and demobilisation.

Underground cavern and tunnelling

Acoustic shed, corner of Roma Street and Parkland Boulevard

Cavern construction

Ongoing

Day and night work

- Steel installation and concrete pours.
- Delivering and installing precast concrete segment including platform culverts.
- Use of ventilation fan to facilitate underground activities.
- Back of house block work.
- Transporting equipment and materials within the worksite.

During construction, you may notice:

- Roma Street station and cavern construction hours are 24 hours Monday to Friday and 6.30am - 6.30pm on Saturdays. Some activities may be required to take place outside of these hours, at times.
- Construction activities may generate increased levels of noise, dust and vibration, and will be mitigated onsite where possible.
- Construction vehicles travelling to and from the worksite via Roma Street.
- Extended concrete pours are scheduled to start early in the morning.
- Delivery of materials and equipment to the worksite including at night.
- Temporary traffic and pedestrian changes on Roma Street and surrounding streets.

Nearby properties that are directly impacted by our works will be contacted closer to the time with specific information on activities near them.

☎ 1800 010 875

✉ crossriverrail@cbgujv.com.au

🌐 crossriverrail.qld.gov.au



If you need an interpreter to assist you in understanding this document, please call the Translating and Interpreting Service (TIS National) on 131 450 and request to be transferred to Multicultural Affairs Queensland on 13 QGOV (13 74 68)

