

Works Notice

June - July 2023

Exhibition station construction update

During June and July 2023, UNITY Alliance will continue work on Exhibition station within the RNA Showgrounds including rock excavation, piling, structural steel installation, bridge construction and concrete works.

Details of work

The following activities are scheduled to occur between 6:30am and 6:30pm, Monday to Saturday during June and July 2023, weather and construction conditions permitting:

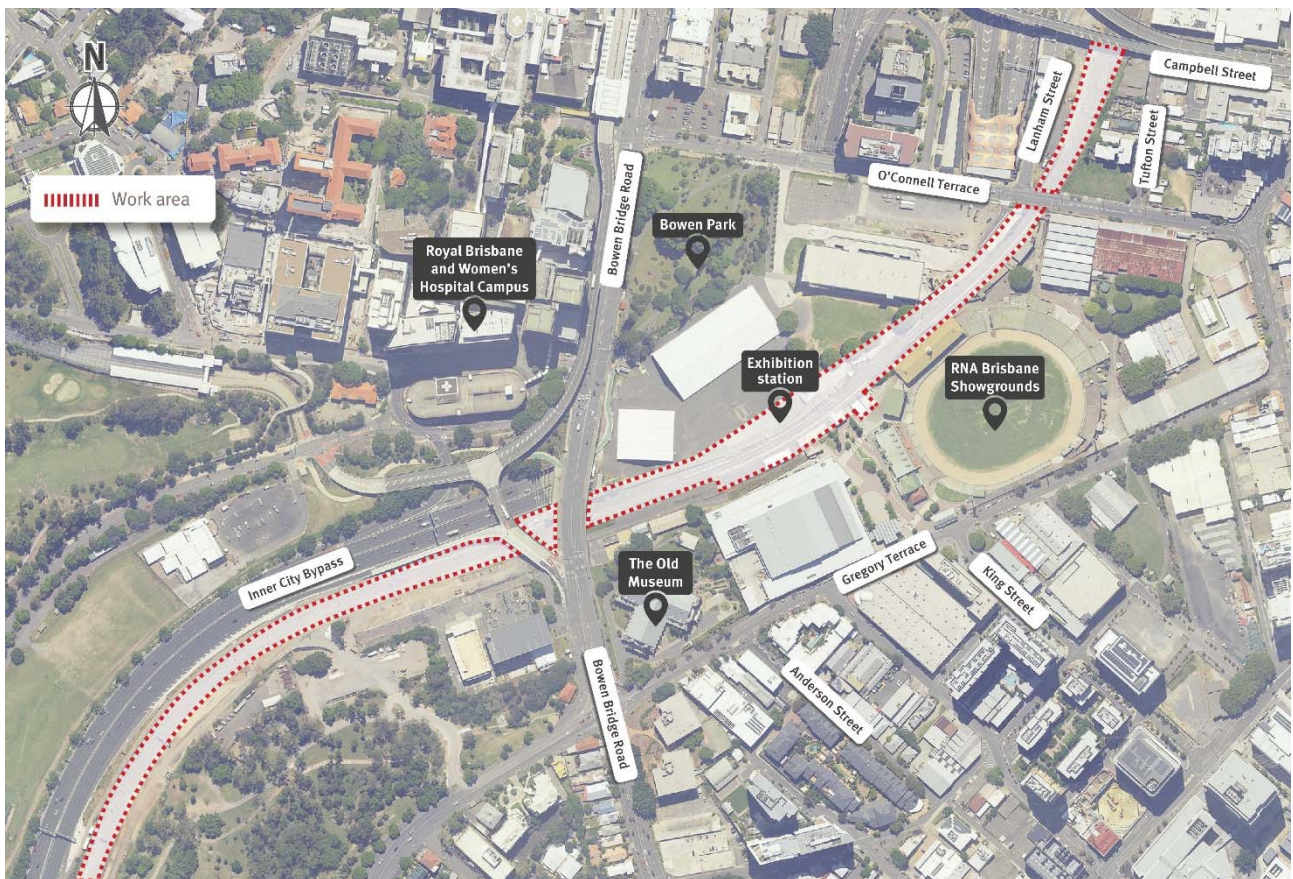
- Demolition and removal of redundant structures with the rail corridor
- Installation of mast foundations and structures for overhead electrical lines and cable routes and pits within the rail corridor between Campbell Street and south of Bowen Bridge Road
- Rock excavation within the rail corridor between Campbell Street and Bowen Bridge Road
- Station drainage and underground utility installation
- Installation of structural steel and concrete for new station platforms
- Construction of station retaining walls and new railway viaduct
- Sewer relocation works at the cul-de-sac of Campbell Street, Bowen Hills
- Surveying and investigating underground services, such as water, electricity and gas
- Track work and maintenance.

Out of hours work

Additional activities will occur outside the project's normal working hours, as outlined below:

Location	Date and hours of work	Type of work
Spring Hill and Bowen Hills	Night shift Intermittently between 6:30pm and 6:30am throughout June and July 2023	<ul style="list-style-type: none"> • Concrete deliveries and pours • Installation of cable routes and pits within the rail corridor including pulling new cables in conduits • Minor earthworks to support signalling installation • Track work and maintenance.
	Between 9:30am Monday 29 May to 2:00am Friday 2 June 2023	<ul style="list-style-type: none"> • Concrete deliveries and pours • Rock excavation and earthworks between Campbell Street, Bowen Hills and Victoria Park, Spring Hill
	Between 9:30am Friday 16 to 2:30pm Tuesday 20 June 2023	<ul style="list-style-type: none"> • Installation of overhead electrical structures, mast foundations, signalling equipment, cable routes and pits within the rail corridor • Installation of structural steel and concrete for new station platforms
	Between 9:30am Friday 23 June to 2:00am Friday 14 July 2023	<ul style="list-style-type: none"> • Earthworks and installation of drainage • Track work and maintenance • Installation of structural steel and concrete for new station platforms.

Work area Exhibition station precinct in June and July 2023



What to expect

During these works you may notice some intermittent disruptions such as:

- Light vehicles, trucks and machinery including excavators with hydraulic hammers, mobile cranes, small power tools, drills, saws, minor vibrating equipment and mobile lighting towers to light the work areas at night
- Use of large machinery such as excavators with hydraulic hammers to remove rock and concrete structures around between Campbell Street and Bowen Bridge Road and load material into trucks for transport
- Changes around your local area such as construction vehicles, traffic management signs and personnel
- Increased levels of noise, vibration and dust associated with the use of heavy machinery and equipment
- Access into the rail corridor will be via the Victoria Park access road, Bowen Bridge Road, Lanham Street and O'Connell Terrace via the RNA Showgrounds.

We appreciate your patience during construction and will continue to update you as work progresses.

Cross River Rail will transform the way we travel to, from, and through Brisbane in the future. But right now, construction means disruption to train services. Sign up to receive updates at our website and use Translink's journey planner at translink.com.au, call 13 12 30 or download the MyTranslink app to plan your journey.