

Works Notice

April - May 2023

Construction update Mayne Yard

In April and May 2023, the decommissioning of redundant facilities and services within Mayne Yard East and the construction of access roads within Mayne Yard North will continue.

Details of work

During April and May 2023, the following activities are scheduled to occur between 6:30am and 6:30pm, Monday to Saturday, weather and construction conditions permitting:

- Relocation of services within Mayne Yard East
- Continue construction for new pedestrian overpasses within Mayne Yard East
- Track modifications within Mayne Yard West
- Continue construction for new access roads and overpasses within Mayne Yard North
- Continue construction of the new rail bridge over Breakfast Creek
- Continue earthworks to construct new rail embankments
- Installation of masts and foundations for overhead electrical wires
- Sewer relocation works at the cul-de-sac of Campbell Street, Bowen Hills
- Ongoing installation of cable routes and pits within the rail corridor.

Out of hours work

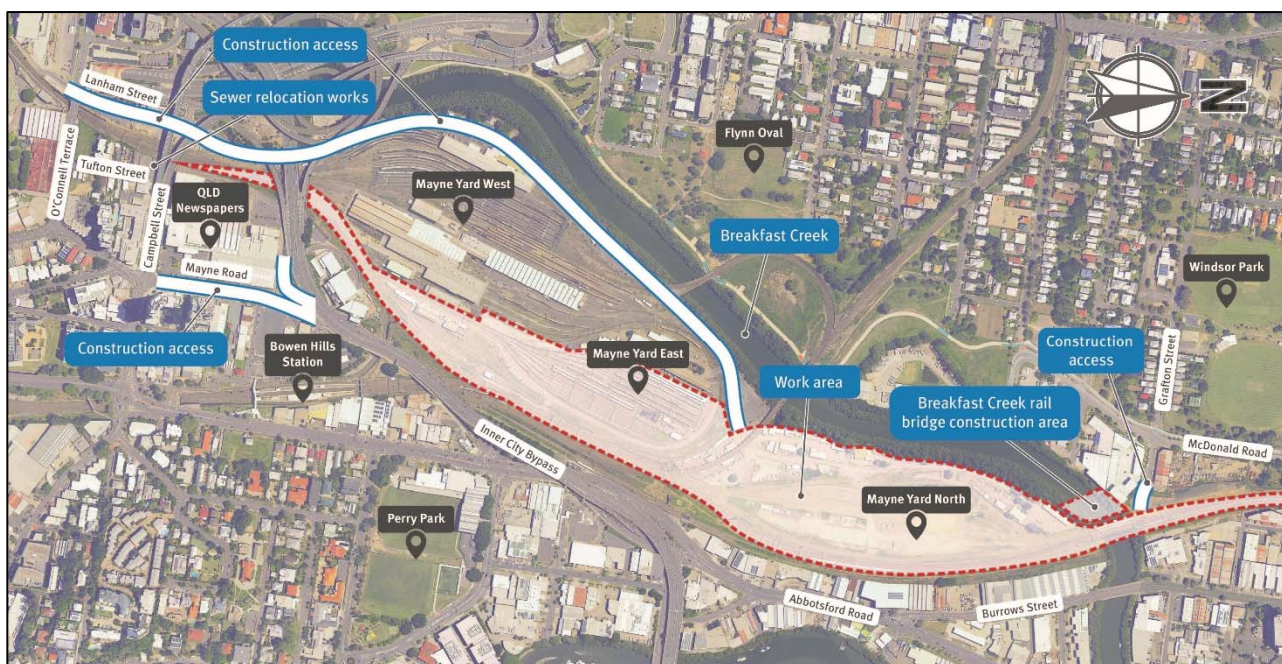
Additional activities will occur outside the project's normal working hours, as outlined below:

Location	Date and hours of work	Type of work
Mayne Yard, Bowen Hills	Intermittently between 6:00pm and 6:30am throughout April and May 2023	<ul style="list-style-type: none"> • Concrete works including placement of formwork, steel fixing and concrete pours • Delivery of materials to site • Installation of conduits and pulling new cables • Track work and maintenance.
	Between 2:00am Friday 7 to 2:30am Tuesday 11 April 2023	<ul style="list-style-type: none"> • Installation of overhead electrical structures, signalling equipment, cable routes and pits within the rail corridor
	Between 2:00am Saturday 29 April to 2:30am Tuesday 2 May 2023	<ul style="list-style-type: none"> • Decommissioning of some redundant facilities and services within Mayne Yard East • Breakfast Creek rail bridge construction, including earthworks and piling
	Between 9:30am Thursday 18 to 2:30 Monday 29 May 2023	<ul style="list-style-type: none"> • Test pitting and service location works • Track work and maintenance.

Cross River Rail will transform the way we travel to, from, and through Brisbane in the future. But right now, construction means disruption to train services. Sign up to receive updates at our website and use Translink's journey planner at translink.com.au, call 13 12 30 or download the MyTranslink app to plan your journey.

We appreciate your patience during construction and will continue to update you as work progresses.

Mayne Yard construction access points and work areas



What to expect

During these works you may notice some intermittent disruptions such as:

- Light vehicles, trucks and machinery including excavators, augers, vacuum trucks, piling and drill rigs, concrete trucks, small power tools, minor vibrating equipment and mobile lighting towers to light the work areas at night
- Traffic control and signage on Campbell Street and Tufton Street, Bowen Hills for sewer relocation works
- Changes around your local area such as construction vehicles, traffic management signs and personnel
- Delivery trucks and workers' vehicles entering Mayne Yard North via the existing access road at Lanham Street and Mayne Road, Bowen Hills and intermittently via Grafton Street, Windsor
- Some increased levels of noise, vibration and dust associated with the use of heavy machinery and equipment
- Due to the construction of a new rail bridge, a section of Breakfast Creek near Grafton Street, Windsor has been temporarily closed to all boats / vessels until July 2023. The construction area boundaries will be marked with buoys on the water within Breakfast Creek.



March 2023 – Decommissioning of redundant facilities within Mayne Yard East