

Non-Indigenous Heritage Management Sub-Plan

Cross River Rail – Rail, Integration and Systems Alliance

Project number:	Q01080
Document number:	RIS-UNA-000-001-MPL-000276
Revision date:	12 October 2021
Revision number:	04

Document Approval

Rev	Date	Prepared By	Reviewed By	Approved By	Remarks
A	28/06/19	UNITY – Environment Manager	UNITY – Delivery Manager		IFR
B	07/10/19	UNITY – Environment Manager	UNITY – Delivery Manager	UNITY – Environment Manager	IFU
00	27/10/19	UNITY – Environment Manager	UNITY – Delivery Manager	UNITY – Environment Manager	IFU
01	26/06/20	UNITY – Senior Environmental Advisor	UNITY – Environment Manager		IFR
02	07/09/20			UNITY – Environment Manager	IFU
03	26/08/21	UNITY – Senior Environmental Advisor	UNITY – Environment Manager		IFR
04	12/10/21			UNITY – Environment Manager	IFU
Signature:					

Plan Control

This Non-Indigenous Heritage Management Sub-Plan (the plan) has been developed for the Cross River Rail – Rail, Integration and Systems Project.

Approvals, Revisions and Amendments

Plan approval is in accordance with Section 4.1.2 of the Construction Environmental Management Plan (C-EMP).

Plan reviews and updates is in accordance with Section 7 and Section 8.1 of the C-EMP.

Revision Details

Revision	Remarks
A	Final C-EMP for Review and endorsement by the Environmental Monitor
B	Incorporation of IEM's review comments from 06 September 2019
00	Plan updated to Rev00 to reflect endorsed status
01	6 monthly review and updated to incorporate changes linked to RfPC-7 and Updated O-EMP Update to incorporate the updated mapping from detailed archaeological desktop assessments for Victoria Park and the Royal Exhibitions Grounds The update does not include new or additional Relevant Project Works
02	Issued for Use
03	Issued for review to the IEM 6 monthly review and update to incorporate <ul style="list-style-type: none"> changes linked to RfPC-11 addition of the Southern Area Scope of Works (Dutton Park and Buranda)
04	Issued for Use

1 Purpose of this Plan

This sub-plan has been prepared to demonstrate how UNITY will comply with:

- Coordinator-General's Condition of Approval – Appendix 1 – Part C
 - Condition 11(e)
 - Conditions 12(b) and 12(c)
 as they relate to vibration impact to Heritage Structures
- Final Outline-Environmental Management (Plan O-EMP) – Outline Non-Indigenous Heritage Management Plan.

Component	Details
Environmental Outcome(s)	<ul style="list-style-type: none"> • Construction activities are managed to maintain cultural heritage values of identified places of historical value, within and adjacent to the construction worksites and tunnel alignment. • Construction activities are managed to maintain scientific values of any archaeological places uncovered during project works.

Component	Details
Relevant Area	<ul style="list-style-type: none"> • State Heritage: <ul style="list-style-type: none"> – Victoria Park (within the project boundaries) – RNA Showgrounds (within the project boundaries) – Potential for uncontrolled fill material in Mayne Yard to have archaeological value and as such, be of State heritage value – Old Museum Building (adjacent to project boundaries) – Bowen Bridge Park (adjacent to project boundaries) – Brisbane Grammar School (adjacent to project boundaries) – Hefferan Park Air Raid Shelter (adjacent to project boundaries) – South Brisbane Cemetery (adjacent to project boundaries) • Queensland Rail Heritage: RNA Showground, Breakfast Creek (QR Heritage Listed Warren Truss Bridge) and F2S stations as below: <ul style="list-style-type: none"> – Dutton Park shelter (within the project boundaries) – Fairfield Station (within the project boundaries) – Fairfield platform shelter (within the project boundaries) – Fairfield footbridge (within the project boundaries) – Yeronga footbridge (within the project boundaries) – Yeerongpilly Station (within the project boundaries) – Yeerongpilly trainmen's quarters (adjacent to project boundaries) – Rocklea platform shelter (within the project boundaries) – Rocklea Station Building (within the project boundaries) – Rocklea footbridge (within the project boundaries) – Salisbury Station (within the project boundaries) – Salisbury footbridge (within the project boundaries) • Brisbane City Council (BCC) Heritage: <ul style="list-style-type: none"> – Tufton House (adjacent to project boundaries) – Yeronga footbridge (within project boundaries) – BTS Building (within the project boundaries) - also known as the New Zealand Loan & Mercantile Agency Company Woolstore (former) – QR shed in the northern corridor directly west of Bowen Bridge Road (within the project boundaries) – also known as the New Zealand Loan & Mercantile Agency Company Woolstore (former) – Bowen Bridge & approach walls (adjacent to project boundaries) – Sneyd Street Drain in RNA showgrounds (within the project boundaries) – Brisbane Girls Grammar School (adjacent to project boundaries) – Hefferan Park Air Raid Shelter (adjacent to project boundaries) – South Brisbane Cemetery (adjacent to project boundaries)
Relevant Works / Activities	<ul style="list-style-type: none"> • Entire scope of works within RNA Showgrounds • Entire scope of works within Victoria park • General construction activities with a focus on: <ul style="list-style-type: none"> – Earthworks involving excavations (e.g. trenching, remove and replace) – Ground surface treatments involving vibratory equipment – Demolition of existing buildings • PUP relocation and installation • Surface and subsurface drainage works • High vibration impact activities such as: <ul style="list-style-type: none"> – Drilling – Piling – Jack and hydraulic hammering – Vibratory rolling.

Component	Details
Performance Criteria	<ul style="list-style-type: none"> Construction activities do not adversely impact on places of historical heritage value directly or indirectly through excessive dust deposition, excessive vibration or excessive settlement A Heritage Management Plan (HMP) is prepared and approved for all places of State or local historical heritage significance likely to be impacted by works prior to these works commencing. An overarching management plan is prepared in respect of places of local heritage value Any archaeological places uncovered are appropriately managed Construction works must achieve the vibration goals as per Condition 11(d) – Table 3 for heritage structure, that is: <ul style="list-style-type: none"> For continuous vibration – maximum 2mm/s PPV to prevent cosmetic damage For blasting vibration – maximum 10mm/s PPV to prevent cosmetic damage Where predictive modelling indicates the project works would lead to impacts above the vibration goals for cosmetic damage in Table 3 presented in the Noise and Vibration Management sub plan, UNITY must prepare and submit a property damage sub-plan, prior to commencement of such works, as part of the C-EMP. The property damage sub-plan must set out the procedure for: <ul style="list-style-type: none"> Advance communication with potentially Directly Affected Persons Procedures for building condition surveys, both in advance of and following project works, including provision for consultation with property owners and occupants Structural engineer to assess appropriate vibration limits for specific buildings Monitoring to be undertaken for potential impacts to property Mitigation measures.
Sustainability	Her-1, Her-2, Sta-1 and Sta-4.
Mitigation Measure	<p>Prior to construction</p> <ul style="list-style-type: none"> Undertake predictive vibration modelling to identify State heritage-listed buildings that will be retained but that may be adversely affected by construction works. Undertake a structural assessment of the: <ul style="list-style-type: none"> State heritage-listed buildings to be retained but potentially affected by construction vibration based on the outcomes of the predictive vibration model State heritage listed buildings in the RNA showgrounds, where the predictive vibration model does not identify that will be impacted by the proposed works but are located within 10m of vibration intensive works. the meaning of vibration intensive works is to be determined based on the advice of a Suitably Qualified Acoustic Specialist Tufton House, Owner's consent pending Heritage Platform Shelter at Fairfield Station to confirm whether the proposed temporary removal is feasible Undertake a review of the predicted air quality impacts (in particular dust) to identify State heritage-listed buildings that may be adversely affected by construction works. Undertake a review of the proposed construction activities and how they may directly or indirectly affect archaeological and built heritage values Document the results of the assessment and associated mitigation measures in <ul style="list-style-type: none"> an area-specific Heritage Management Plan (HMP) to be appended to the relevant workpacks and SEPs where impact management is not subject to statutory approvals¹. a Heritage Impact Statement (HIS) to be incorporated into a statutory approval submission where impact management is subject to statutory approvals. The HMP and the HIS must include management measures consistent with the DES endorsed Archaeological Management Plan (AMP) when archaeological values may be affected

¹ No impact is anticipated for Brisbane Girls Grammar School. Were this to change an HMP will be prepared accordingly. Impact to Sneyd Drain has been addressed as part of the HIS for the RNA Showground Heritage Exemption Certificates (s74) and Development Application by the State (s71). All other local heritage values within the rail corridor (BTS Building, QR shed) will be demolished.

Component	Details
	<ul style="list-style-type: none"> – For Built Heritage values, the HMP and the HIS must include management measures based on the outcomes of the Vibration Predictive Modelling, the recommendations from a Suitably Qualified Acoustic Specialist, the findings of the Structural Assessment and the associated recommendations of the a suitably qualified structural engineer • All personnel involved in, or supervising construction works will complete the heritage portion of the site induction • For all Impact to State Heritage Values, obtain the relevant approvals from the DES or the Queensland Heritage Council prior to the relevant works commencing • For all Impacts to QR Heritage Values obtain the relevant approval from the Queensland Rail Heritage Council prior to the relevant works commencing • Where State or QR Heritage permits condition the need to undertake archival recording this must be done prior to the relevant works commencing <p>During Construction</p> <ul style="list-style-type: none"> • Comply with the relevant State heritage approvals throughout the works • Comply with the Property Damage Mitigation Subplan • The construction requirements associated with the management of Heritage Values will be incorporated in the relevant workpacks and SEPs • Implement and comply with the DES endorsed Archaeological Management Plan during the duration of the works. • In the event of an unsuspected find the protocols detailed in Section 2 must be followed • Comply with the Air Quality sub-plan to protect places of historical significance from excessive dust deposition, • Comply with the noise and vibration management sub-plan to protect places of historical significance from excessive vibration <p>Post Construction</p> <ul style="list-style-type: none"> • Undertake building condition surveys, following project works, including provision for consultation with property owners and occupants
Monitoring	Monitoring will be undertaken in accordance with the approved Heritage Impact Statements and associated Heritage Permits Conditions.
Reporting	<p>Reporting will be undertaken in accordance with the approved Heritage Impact Statements and associated Heritage Permits Conditions</p> <p>Reporting of Archaeological Finds will be in accordance with the requirements of the AMP</p> <p>Alternatively, reporting will be in accordance with Section 8.2 of the C-EMP.</p>
Corrective Action	<p>Management of corrective actions will be undertaken in accordance with the approved Heritage Impact Statements and associated Heritage Permits Conditions</p> <p>Alternatively, management of corrective actions will be as per Section 6 of the C-EMP.</p>
Auditing	<p>Auditing will be undertaken in accordance with the approved Heritage Permits</p> <p>Alternative auditing will be as per Section 7 of the C-EMP.</p>

2 Discovery Decision Flowchart

In the event of an archaeological find the *Discovery Decision Flowchart* of the DES endorsed Archaeological Management Plan will be implemented.

It has been extracted from the AMP and is presented below for convenience.

7. Annex 1 – Discovery decision flowchart

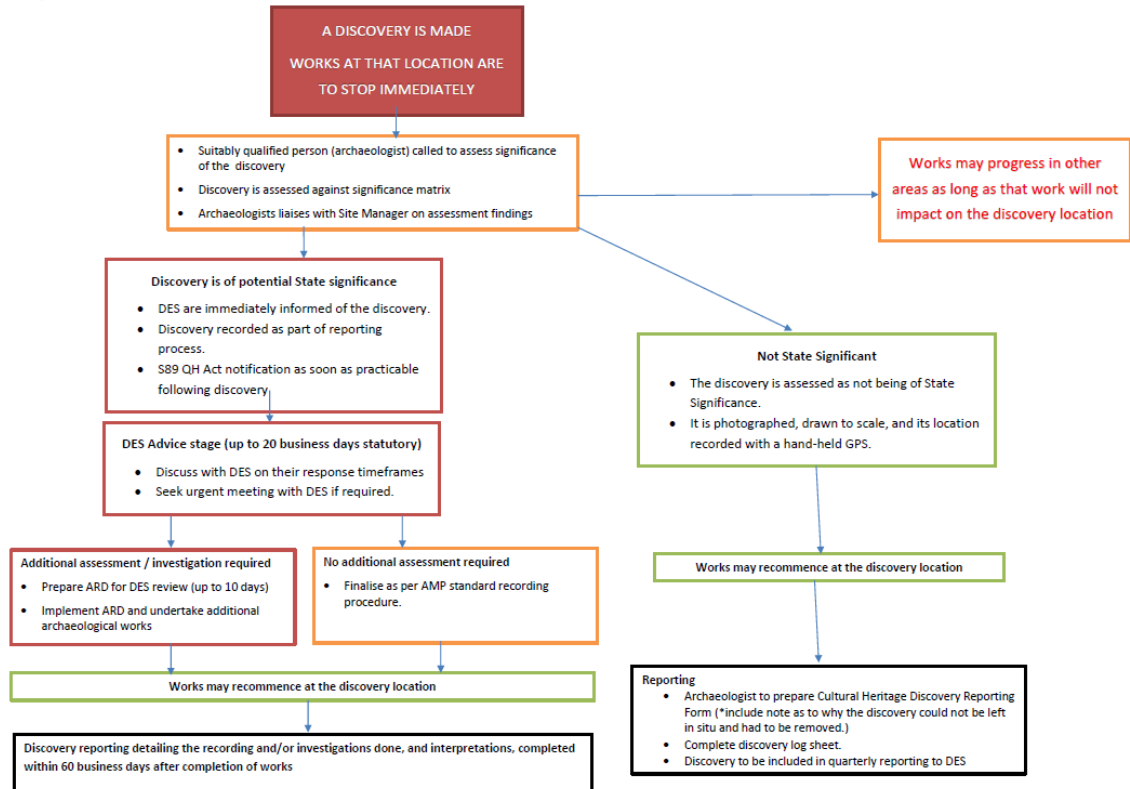


Figure 1: Discovery decision flowchart

3 Mapping of Heritage Values

3.1 Areas of Potential Archaeological Significance

The following areas have been identified as having potential archaeological significance. The below maps have been extracted from the archaeological management plan commissioned by the Delivery Authority and subsequently approved by the Heritage Team from the Department of Environment and Science (DES).

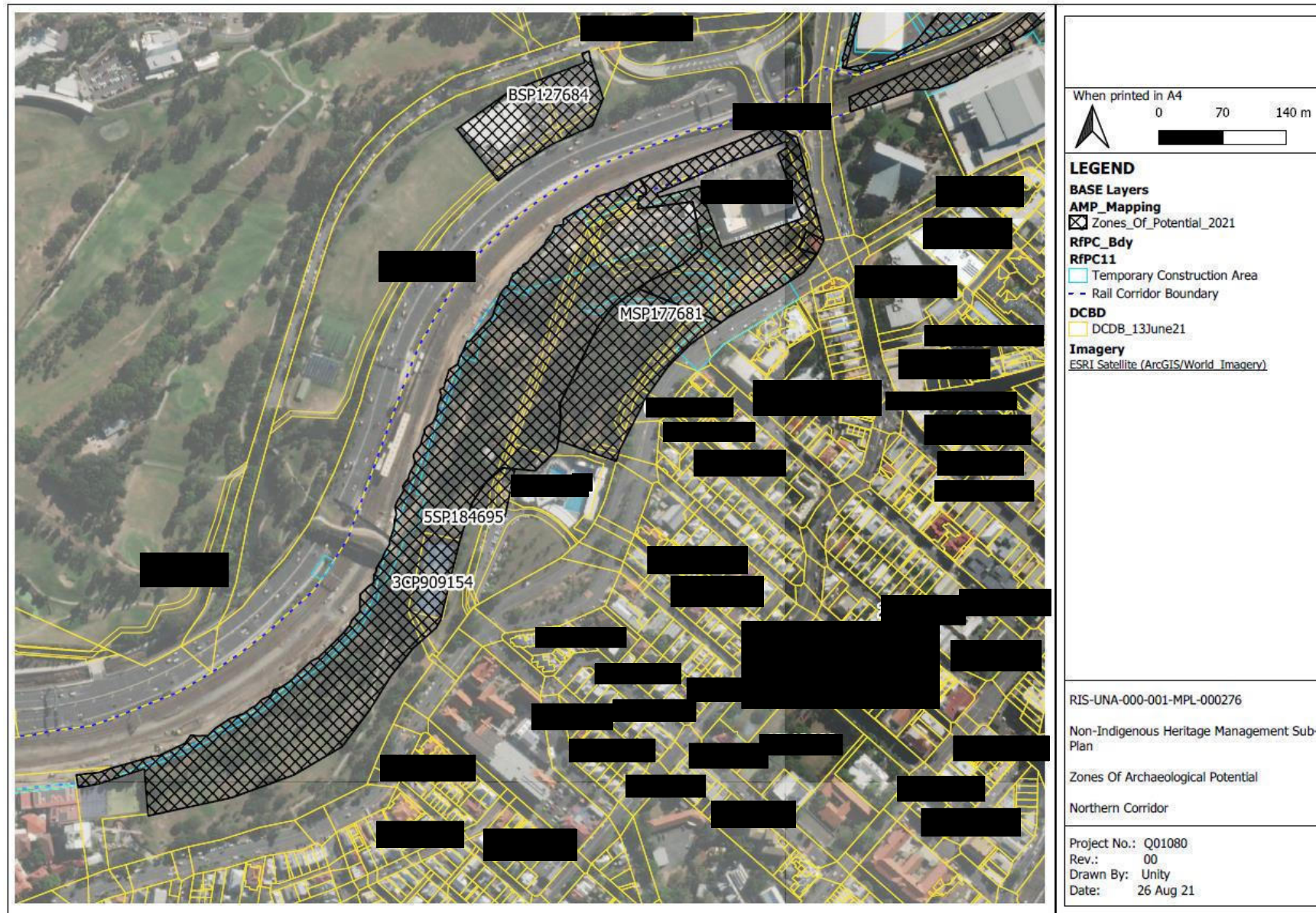


Figure 2: Northern Corridor

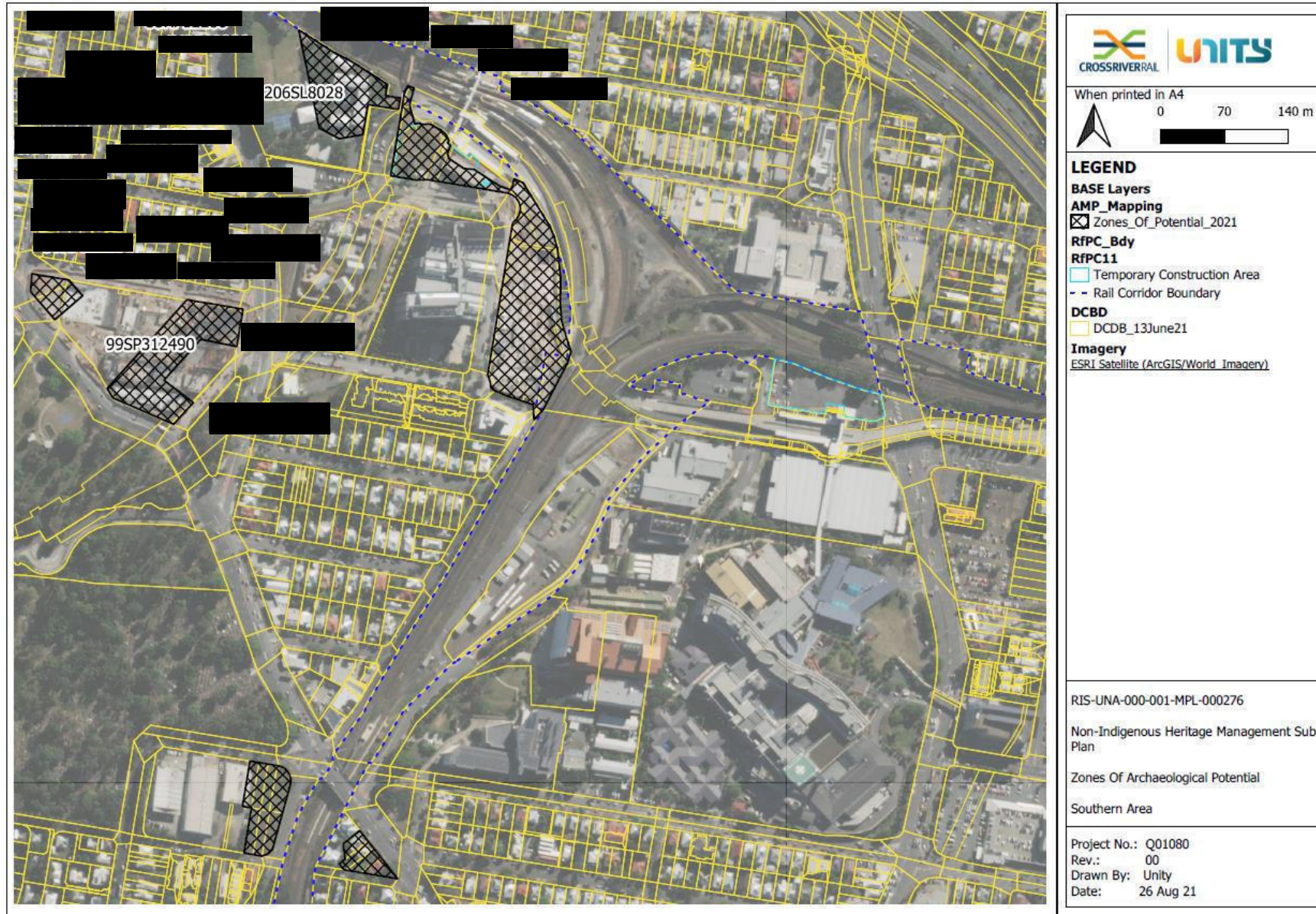


Figure 3: RNA Showgrounds

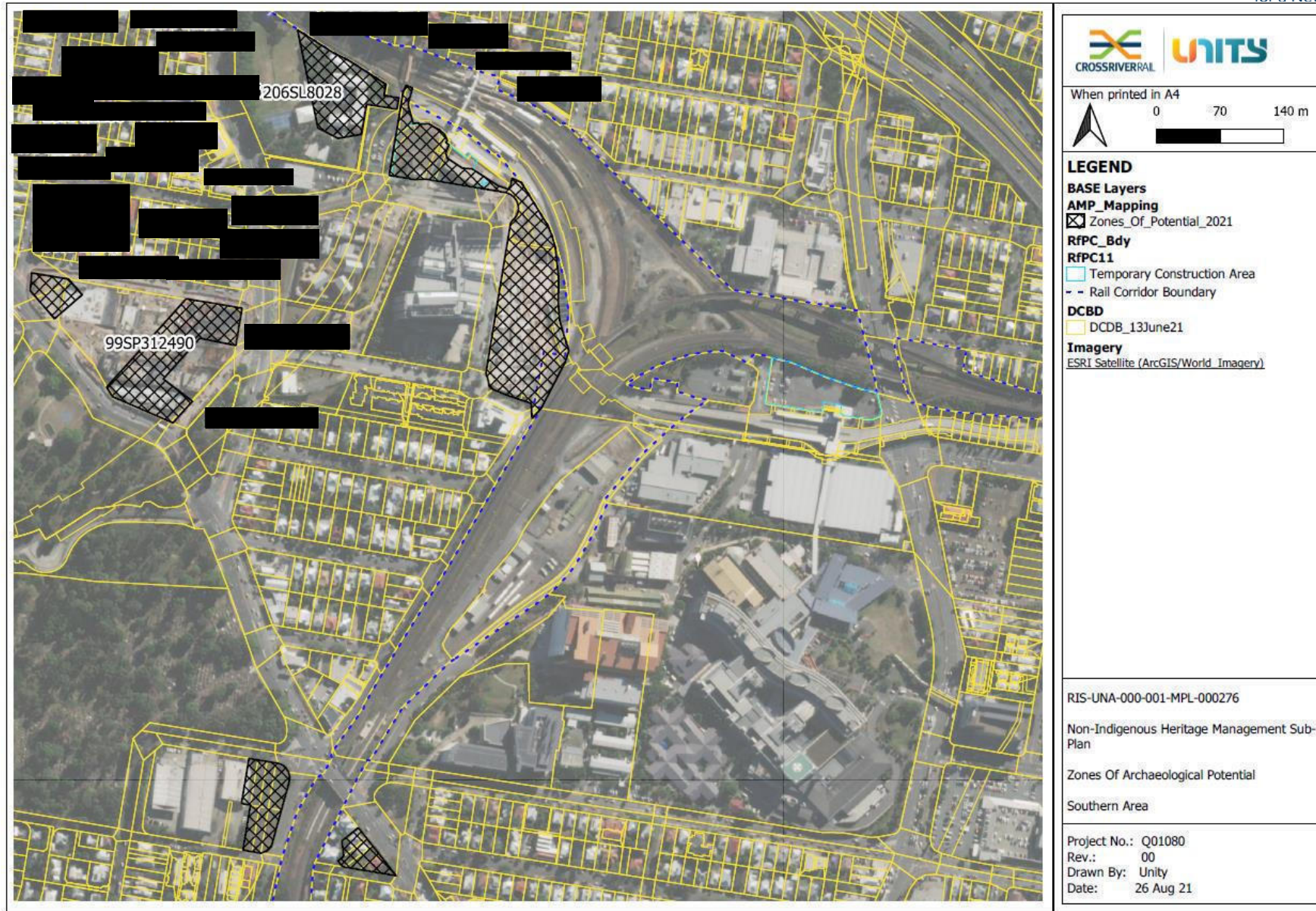


Figure 4: Southern area

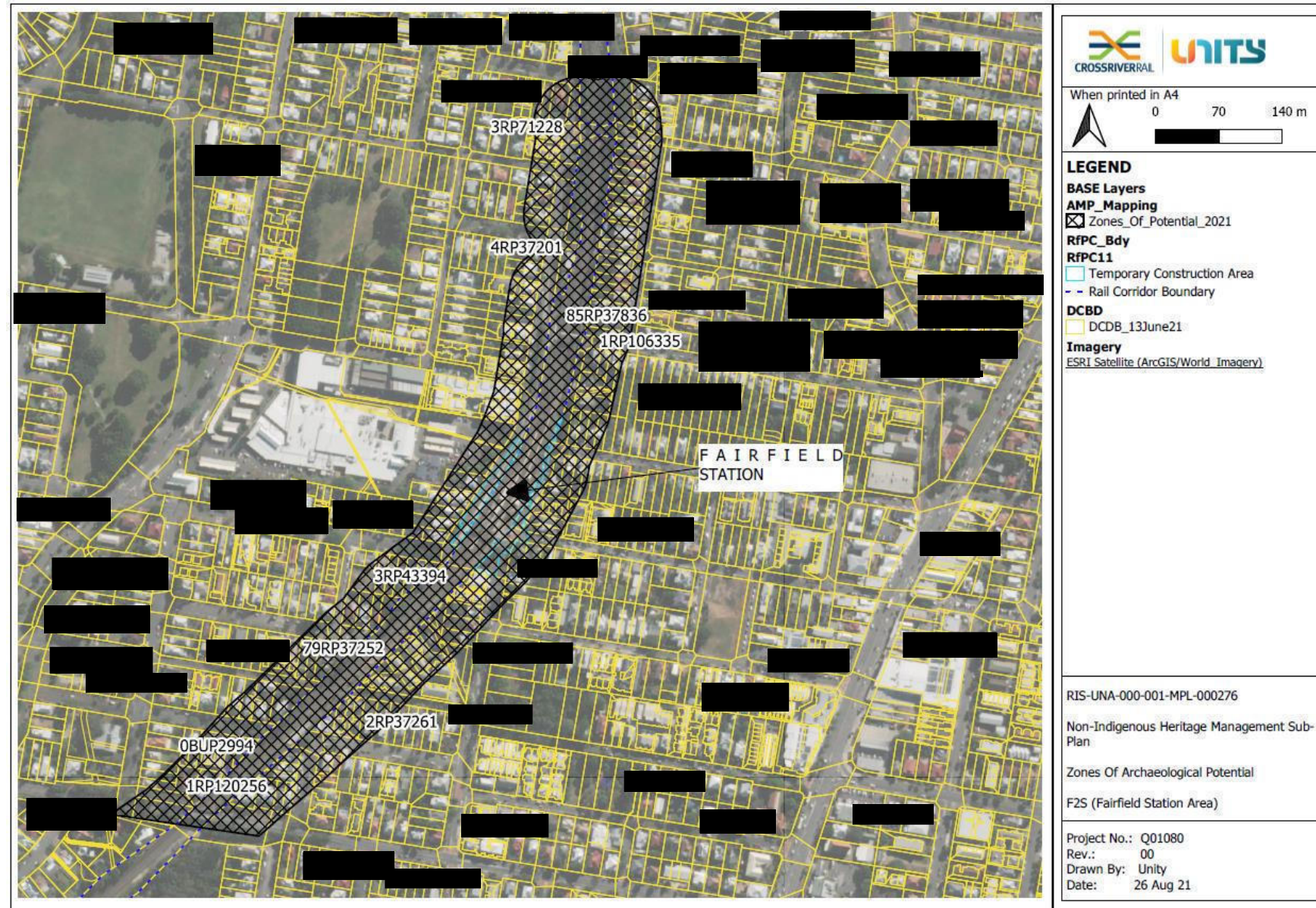


Figure 5: F2S – Fairfield Station

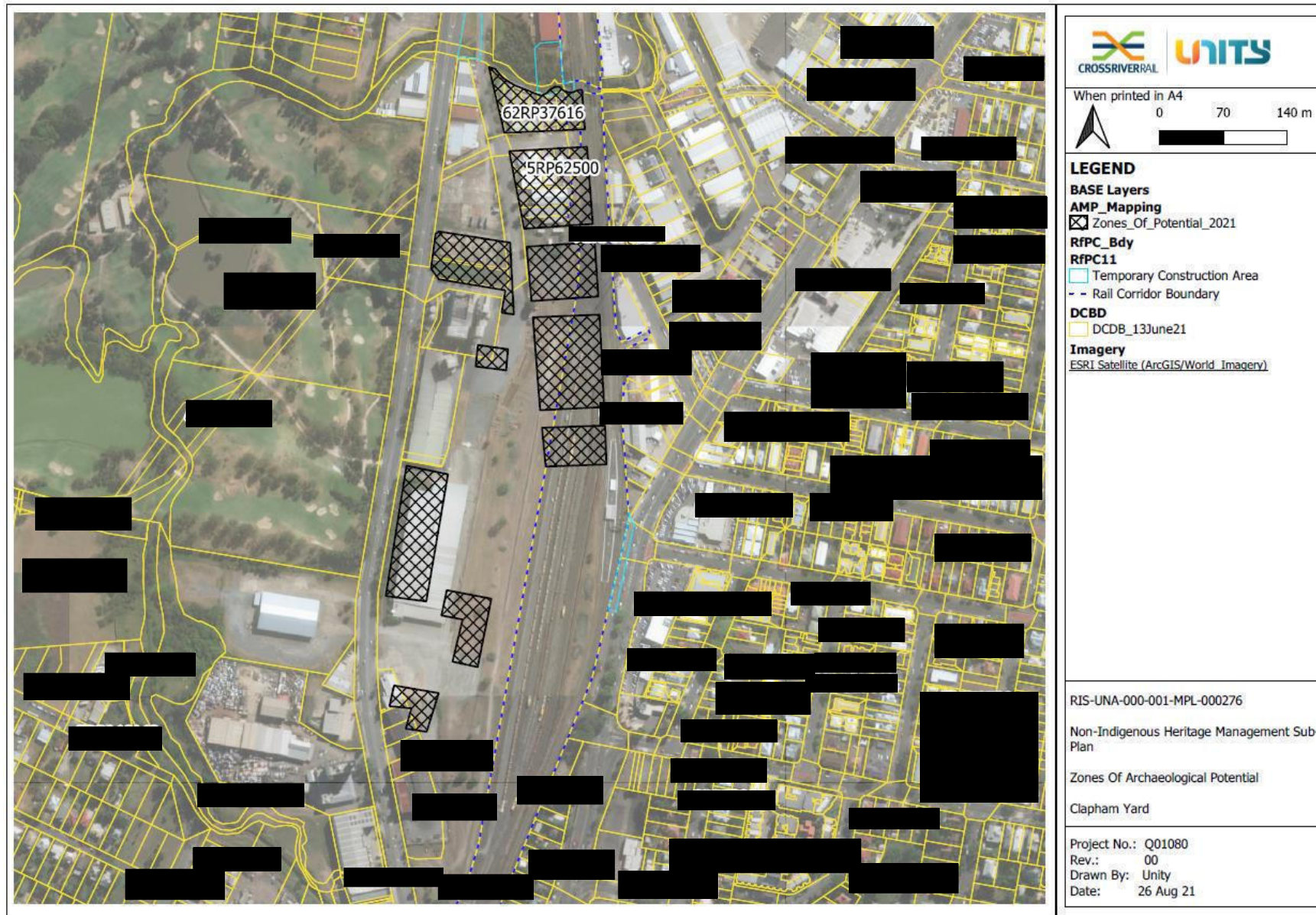


Figure 6: Clapham Yard

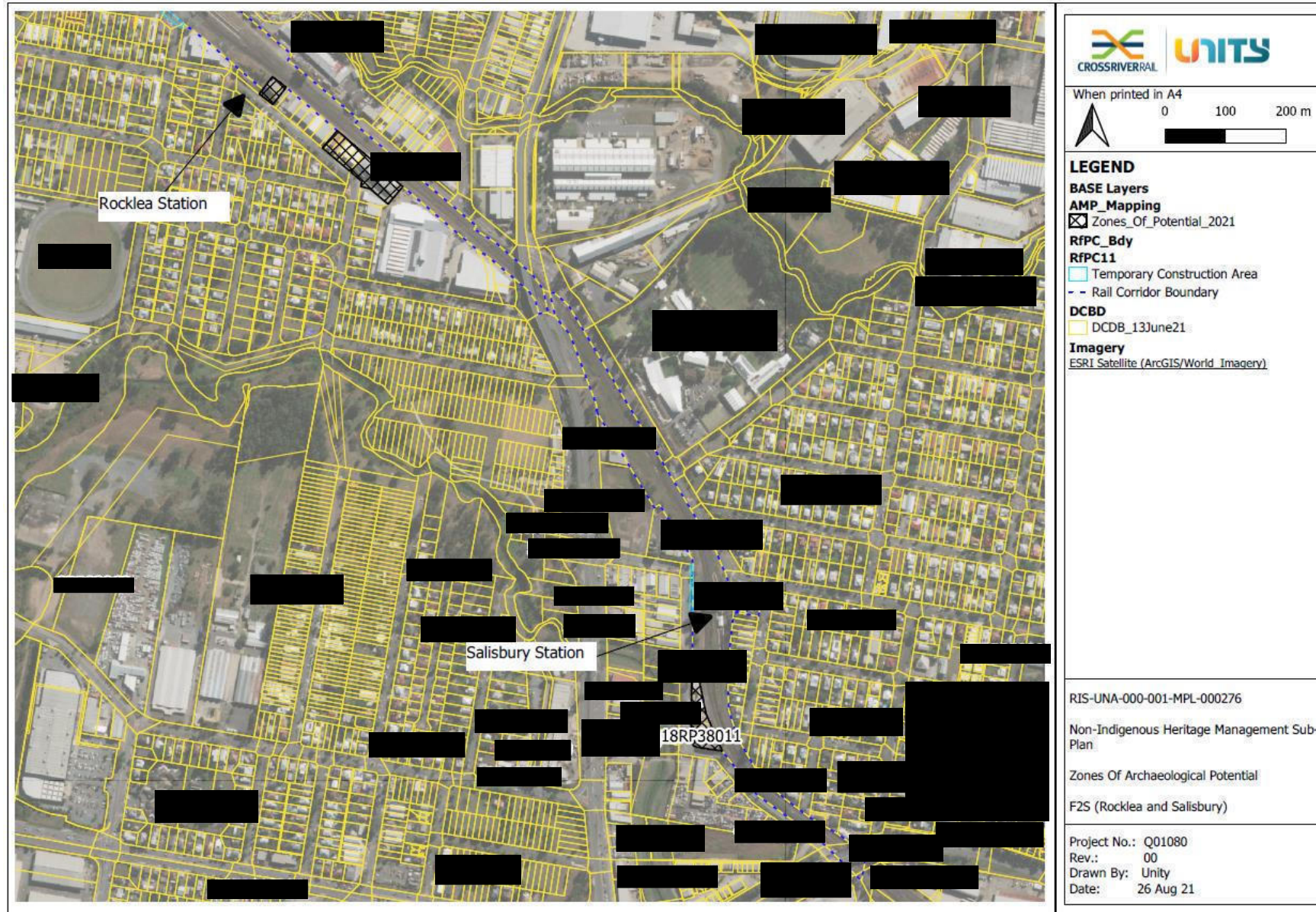


Figure 7: F2S Area – Rocklea Station and Salisbury Station

3.2 Areas of Built Heritage Values

3.2.1 Qld State Heritage Register

The below maps highlight the State Heritage Places recorded on the Qld State Heritage Register which are either intersected by the project boundaries or immediately adjacent.

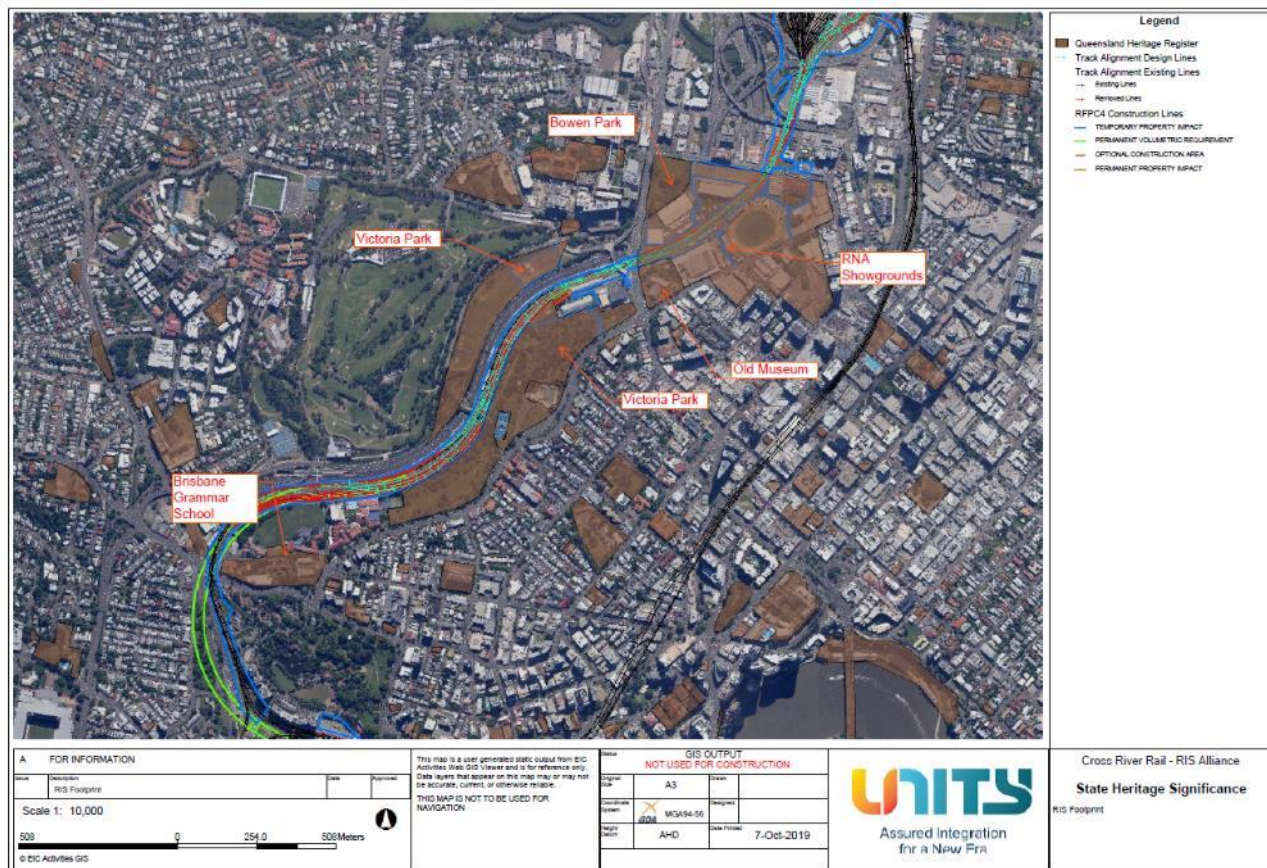


Figure 8: State Heritage - Northern Area

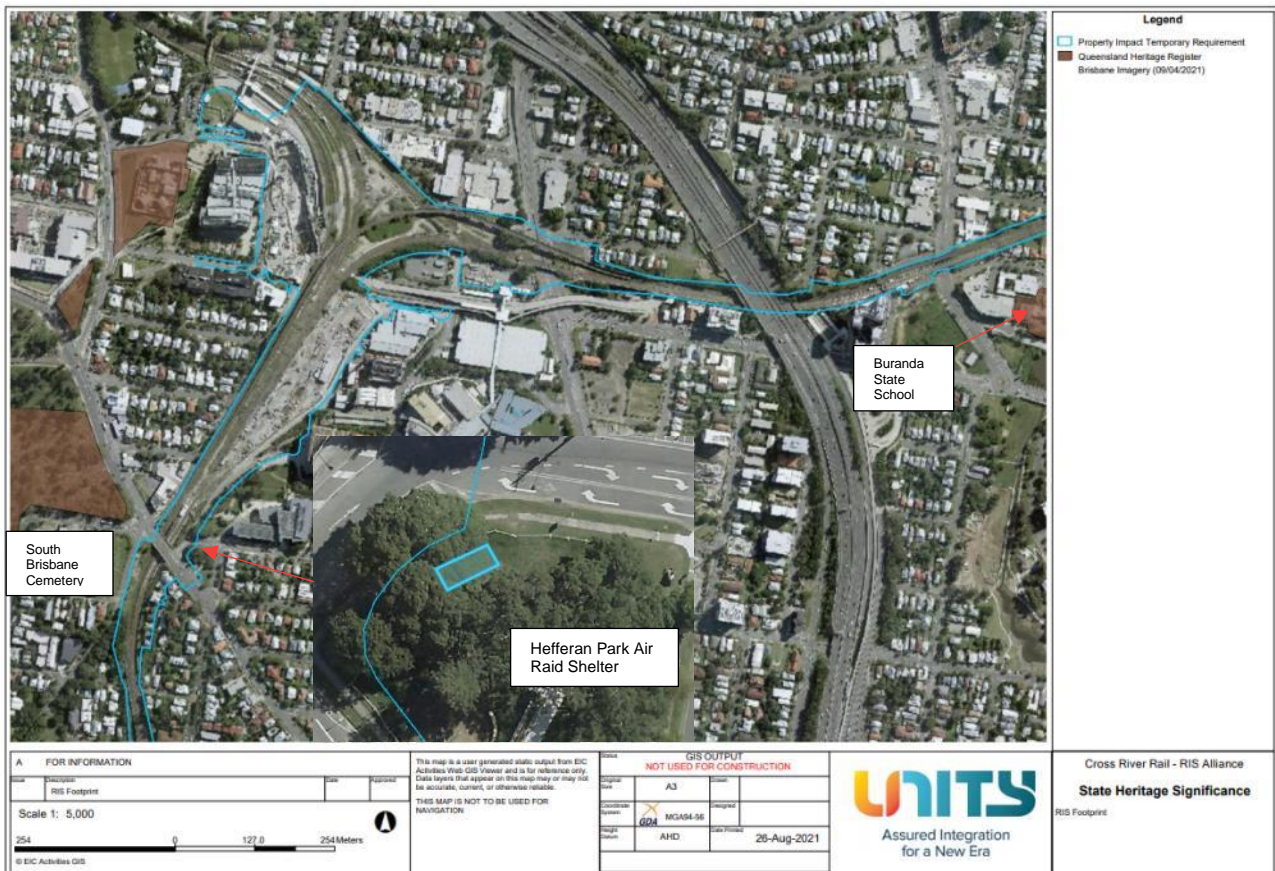





Figure 9: State Heritage - Southern Area

3.2.2 Queensland Rail Heritage Register

The below table summarises the location of the QR heritage sites recorded on the QR Heritage Register which are either intersected by the project boundaries or immediately adjacent.

Site	Map
Truss Bridge Over Breakfast Creek	
Exhibition rail station	

Site	Map
Dutton Park Shelter	
Fairfield Station	

Site	Map
Yeronga Station	
Yeerongpilly Station	

Site	Map
Rocklea Station	
Salisbury Station	

3.2.3 BCC Heritage Register

Despite the project being exempt from seeking approval from the BCC Heritage Team, the Delivery Authority has committed to providing information to BCC on the Project Impacts on Local Heritage Matters for their records.

The following places listed in the Local Heritage Register also have an overlap with State or QR Heritage Listings:

- Northern Area
 - Victoria Park
 - Brisbane Grammar School
 - RNA showgrounds (inclusive the Sneyd Drain)
 - Bowen Park
 - The Old Museum
- Southern Area
 - Hefferan Park Air Raid Shelter
 - South Brisbane Cemetery
 - Yeronga Railway Station Footbridge
 - Trainmen's quarter at Yeerongpilly
 - Rocklea Railway Station & footbridge
 - Salisbury Railway Station ticket office & footbridge (part)

The below map highlights the Local Heritage Places which have a standalone listing as recorded on the BCC Local Heritage Register which are either intersected by the project boundaries or immediately adjacent. They include:

- Tufton House (adjacent to project boundaries)
- BTS Building (within the project boundaries) - also known as the New Zealand Loan & Mercantile Agency Company Woolstore (former) – now demolished following no Objection from Brisbane City Council
- QR shed in the northern corridor directly west of Bowen Bridge Road (within the project boundaries) – also known as the New Zealand Loan & Mercantile Agency Company Woolstore (former) - now demolished following no Objection from Brisbane City Council
- Bowen Bridge & approach walls (adjacent to project boundaries)
- Brisbane Girls Grammar School (adjacent to project boundaries)
- Glorimar Court (adjacent to project boundaries)

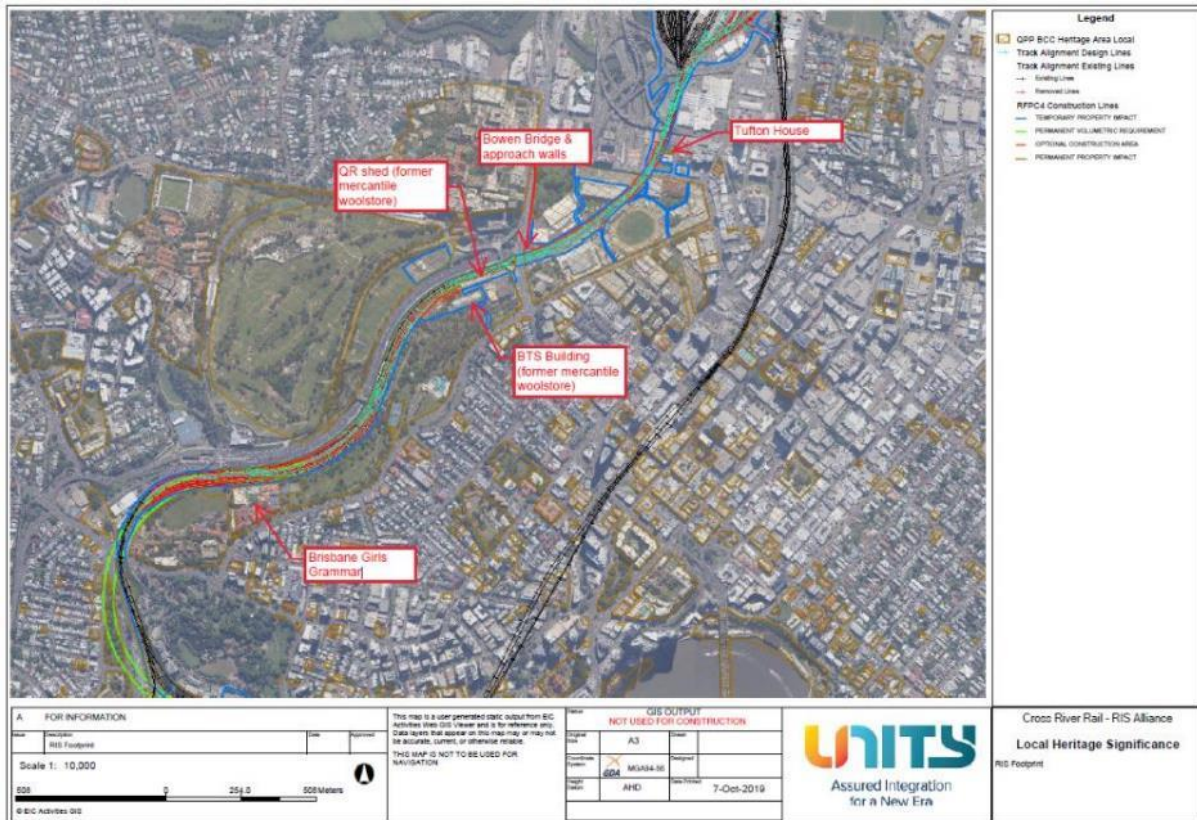


Figure 10: Local heritage values – Northern Area

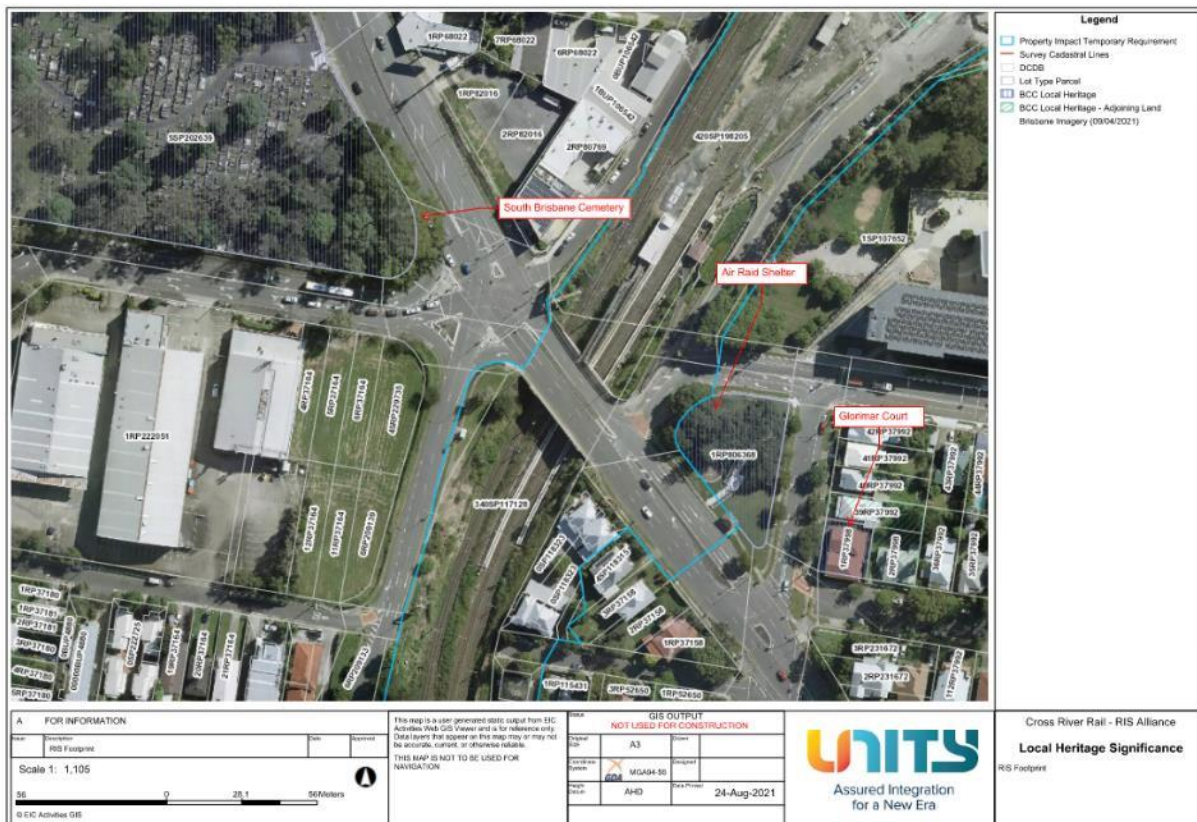


Figure 11: Local heritage values – Southern Area