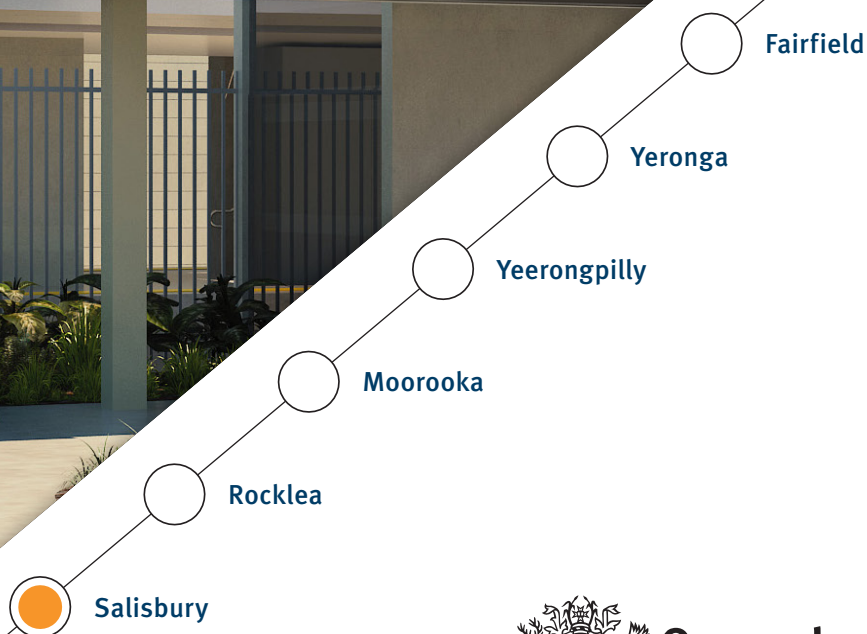


Salisbury station concept design

As part of the Cross River Rail Project, six stations from Fairfield to Salisbury will be upgraded to improve access and functionality.



Salisbury



Queensland
Government

Lillian Avenue entrance



Station features

Features of the Salisbury station include:

- An additional third platform
- A new station building
- An upgrade to the platform finish
- A new overpass and vertical transport system including four lifts and four switchback stairs
- A new enclosed bicycle storage shelter (capacity for 40)
- Provision for accessible car parking and Kiss 'n' Ride car parking on Dollis Street
- A new canopy on the platform to improve weather protection
- Improved access to the platforms.

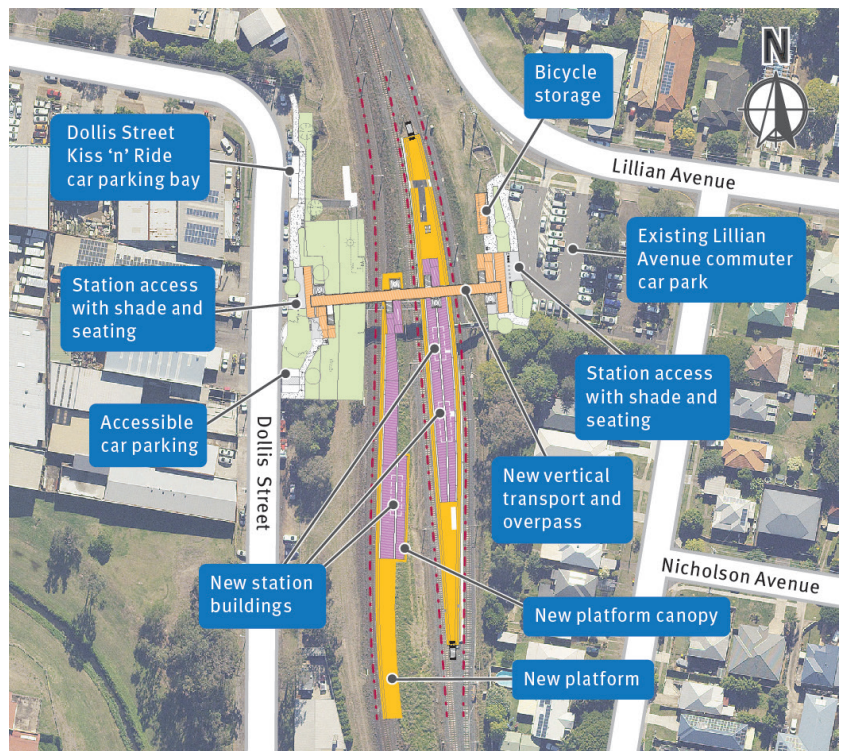
Current status

Early works are continuing including geotechnical investigations, survey, installation of overhead electrical structures and preparing the detailed design for construction. Major construction at Salisbury station is scheduled to start in mid 2022.

The Department of Transport and Main Roads is currently constructing a new commuter car park on the corner of Beaudesert Road and Lillian Avenue, Salisbury. For more information go to www.tmr.qld.gov.au/projects/salisbury-station-park-n-ride-upgrade.

Project information

Subscribing to receive Project Updates is a convenient way to obtain information about the project and work happening in your area. To subscribe, simply visit the Cross River Rail website and look for the subscription area at the bottom of every page.



Contact us

- 1800 010 875
info@unityalliance.com.au
crossriverrail.qld.gov.au



If you need an interpreter to assist you in understanding this document, please call the Translating and Interpreting Service (TIS National) on 131 450 and request to be transferred to Multicultural Affairs Queensland on 13 QGOV (13 74 68)

